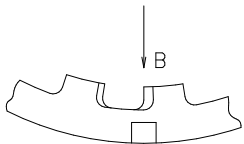
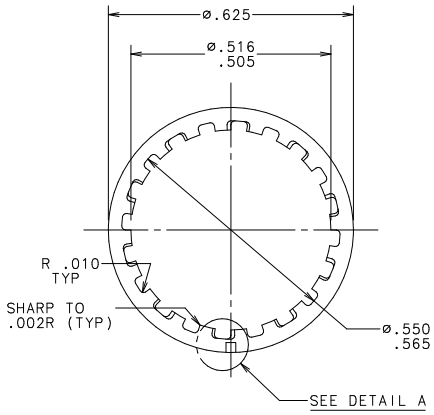
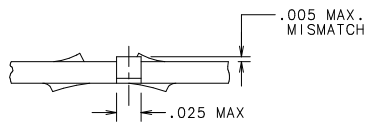


VIEW B
SCALE: 10=1



DETAIL A
SCALE: 10=1



CARRIER TAB DETAIL
SCALE: 10=1

- NOTES:
1. MATERIAL: .022 ±.001 THICK C.R. ANNEALED AISI-SAE 1050.
 2. HEAT TREATMENT: HARDEN & TEMPER TO Rc 44-47.
 3. ELECTRO-ZINC PLATE .0002/.0005 (SEE NOTE 4).
 4. BAKE AT 375° ±25° F. FOR 4 HOURS - BAKING OPERATION TO BE DONE WITHIN 4 HOURS AFTER PLATING TO PROVIDE FOR HYDROGEN EMBRITTLMENT RELIEF.

NO COMPONENT NO		DESCRIPTION		QTY/M	U/M
BILL OF MATERIAL					
MATERIAL SPEC		SEE NOTE 1	FINISH	SEE NOTES 2, 3 & 4	
CDPIES TO	DRW	JMB	DATE	SCALE	4=1
1	9 18		2/19/88		
2	10 19			SUPER DRW	
3	12 20				
4	13 21			RAW STK WT	LBS/M
5	14 23				
6	15 33				
7	16 43			TOLERANCE UNLESS OTHERWISE SPECIFIED	
8	17 53			TWO PLACE DEC ±.01	
				THREE PLACE DEC ±.005	ANGULAR ±1°
TITLE					
LOCKWASHER (20 TOOTH)					

LTR	REVISION	CHK	APD
G	39025C- REVISED & REDRAWN ON NEW FORMAT 3/13/98 JMB		
H	81022D-REMOVE 689487 FROM MAT'L SPEC. 01/26/01 PJM		

905-023

DES PLAINES, ILL INOIS 60016

Litetifuse®

REVISION H

DRAWING NO.

UNLESS OTHERWISE SPECIFIED, DIMENSIONS DO NOT INCLUDE PLATING.

CPK DIMENSIONS - MINIMUM CPK VALUE

CHARACTERISTIC THAT PROVIDES AN INDICATION OF THE MEASUREMENT PROCEDURE FOR MEASUREMENT OF THIS CHARACTERISTIC.

CPK DIMENSIONS - MINIMUM CPK VALUE

WITHIN THE DIMENSIONAL LIMITATIONS

FOR MAXIMUM TOOL LIFE.

UNCONTROLLED DOCUMENT