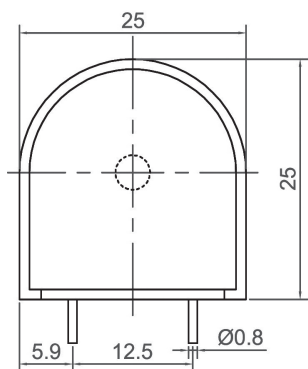
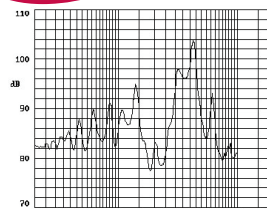


External Drive Piezo Transducer (AC)



CPT2510

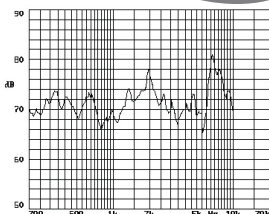
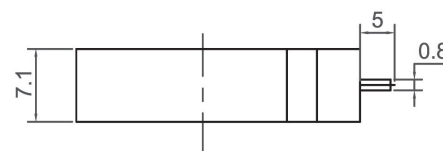
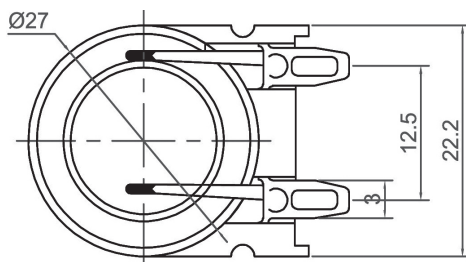


Canopus Part no.	Min sound Output (dBA)	Rated Voltage (V)	Max Input Voltage (V)	Resonant Frequency (Hz)	Capacitance (pF)	Operating Temperature (°C)	Housing	Weight (g)
CPT2510H32NPA	88 AT 10cm	10 Vp-p	30 Vrms	3200	17000 ± 30% at 1000Hz	-30 ~ +115	PPO	3.7

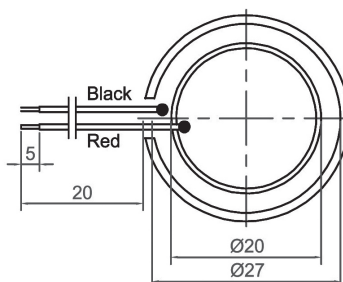
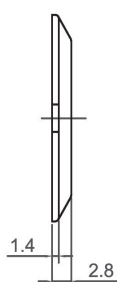
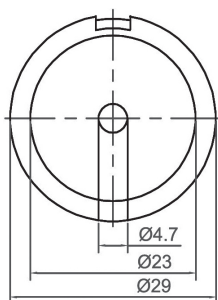
CANOPUS



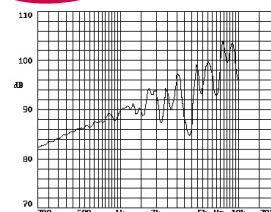
CPT2607



Canopus Part no.	Min sound Output (dBA)	Rated Voltage (V)	Max Input Voltage (V)	Resonant Frequency (Hz)	Capacitance (pF)	Operating Temperature (°C)	Housing	Weight (g)
CPT2607C20TP	70 AT 10cm	3 Vp-p	30 Vrms	2000	20000 ± 30% at 1000Hz	-30 ~ +70	PBT	3
CPT2607C40TP	80 AT 10cm	3 Vp-p	30 Vrms	4000	15000 ± 30% at 1000Hz	-20 ~ +70	PBT	3



CPT2802



Canopus Part no.	Min sound Output (dBA)	Rated Voltage (V)	Max Input Voltage (V)	Resonant Frequency (Hz)	Capacitance (pF)	Operating Temperature (°C)	Housing	Weight (g)
CPT2802G30LW	80 AT 10cm	9 Vp-p	40 Vrms	3000	24000 ± 30% at 1000Hz	-20 ~ +60	PP	2.4

Your Efficient Supplier
www.canopus.com.hk

TEL.: (852) 2806 2812

Fax: (852) 2652 2216