

FCX SERIES FIELD INDICATOR

DATA SHEET

FXE

This is a field installation type moving-coil indicator which receives and indicates signal of 4 to 20 mA DC. It is employed when an indicator is to be installed separately from the transmitter.

SPECIFICATIONS

Functional Specifications

- Measured input:** 4 to 20mA DC (2-wire type)
 - Internal impedance:** 3.5 Ω or less
 - Scale:** 0 to 100% linear scale or 0 to 100% square scale, actual scale
Note: Double scale is unavailable.
 - Scale length:** 50mm
 - Environmental protection:** IEC IP67 and NEMA4X
 - Explosionproof structure:** Intrinsic safety BASEEFA EExialICT4, T5(pending)
Flameproofing JIS d2G4
 - Case material:** Aluminum alloy
 - Finish color:** Epoxy urethane double coating
Silver (case cover is blue-silver)
 - Ambient temperature:** -40 to +85°C
For explosionproof units, ambient temperature must be within the limits specified by each standard.
 - Ambient humidity:** 100% RH or less
 - Storage temperature:** -40 to +90°C
 - Mass:** Approx. 3.5kg
 - Conduit connection:** G1/2, 1/2-14NPT, Pg13.5 or M20 x 1.5 conduit, as specified
 - External terminal:** Input signal terminal x 2, ground terminal x 1, M4mm screw
 - Mounting method:** Mounting on 50A (2B) pipe or on wall
Outer dimensions (H x W x D): 92 x 222 x 179mm
- [Performance Specifications]**
- Accuracy:** ±1.5 class
 - Withstand voltage:** 500V AC, 50/60 Hz, for 1 minute, to ground
 - Insulation resistance:** 100MΩ or more at 500V DC, to ground



SCOPE OF DELIVERY

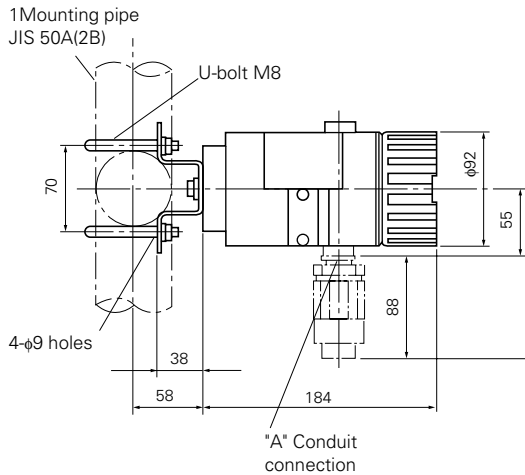
Indicator and pipe mounting bracket (as specified)

CODE SYMBOLS

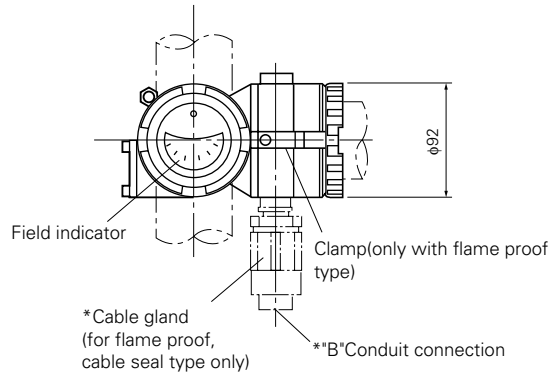
| 1 | 2 | 3 | 4 | 5 | 6 | 7 | 8 | 9 | 10 | 11 | 12 | Description |
|---|---|---|---|---|---|---|---|---|----|----|----|---------------------------------------|
| F | X | E | 0 | 0 | 0 | 1 | - | | | | | |
| | | | | | | | | S | | | | Conduit connection |
| | | | | | | | | T | | | | G1/2 |
| | | | | | | | | V | | | | 1/2-14NPT |
| | | | | | | | | W | | | | Pg13.5 |
| | | | | | | | | | | | | M20 x 1.5 |
| | | | | | | | | | | | | Scale |
| | | | | | | | | B | | | | 0 to 100% linear scale |
| | | | | | | | | C | | | | 0 to 100% square scale |
| | | | | | | | | D | | | | Actual scale |
| | | | | | | | | | | | | Explosionproof structure |
| | | | | | | | | A | | | | General type (non-explosionproof) |
| | | | | | | | | B | | | | JIS flameproof (conduit seal type)(*) |
| | | | | | | | | C | | | | JIS flameproof (cable seal type)(*) |
| | | | | | | | | K | | | | BASEEFA Intrinsic safety |
| | | | | | | | | | | | | Pipe mounting bracket |
| | | | | | | | | A | | | | Not provided |
| | | | | | | | | B | | | | Provided (steel) |
| | | | | | | | | C | | | | Provided (stainless steel) |
| | | | | | | | | | | | | Stainless steel tag plate |
| | | | | | | | | Y | | | | None |
| | | | | | | | | B | | | | Yes |

Note: *10th code B, C is only applicable for 4th codes.

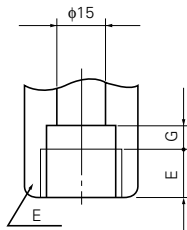
OUTLINE DIAGRAM (Unit:mm)



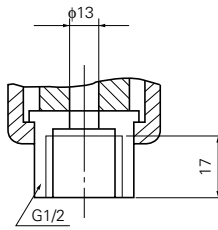
Up
↓
Down



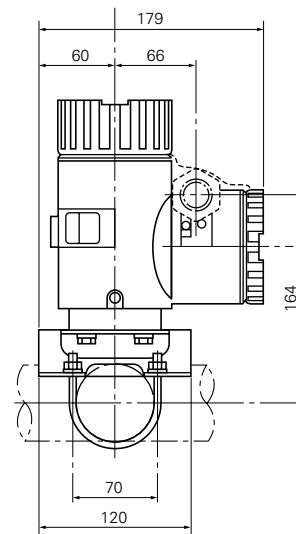
Details of "A"



Details of "B"



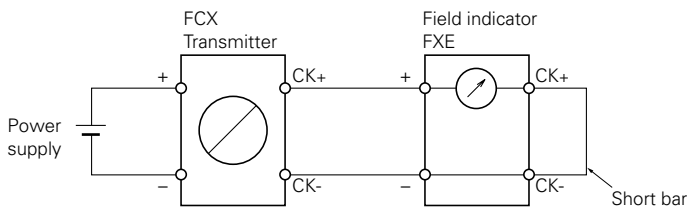
| 4th code | E | F | G |
|----------|-----------|----|-----|
| S | G1/2 | 17 | 8 |
| T | 1/2-14NPT | 16 | 5 |
| V | Pg13.5 | 8 | 4.5 |
| W | M20 × 1.5 | 16 | 5 |



Note: Asterisk(*) items are provided only with flameproof(cable seal type) type. φ11mm cable should be used.

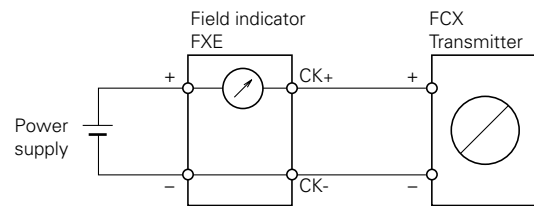
EXTERNAL CONNECTION DIAGRAM

Case 1



Note: Maximum three(3) indicators in series can be connected to the transmitter terminals CK+,CK-.

Case 2



Note: Maximum three(3) indicators in series can be connected between the power supply and the transmitter.

⚠ Caution on Safety

*Before using this product, be sure to read its instruction manual in advance.

Fuji Electric Systems Co.,Ltd.

Head Office

6-17, Sanbancho, Chiyoda-ku, Tokyo 102-0075, Japan
<http://www.fesys.co.jp/eng>

Sales Div.

International Sales Dept.

No.1, Fuji-machi, Hino-city, Tokyo, 191-8502 Japan
 Phone: 81-42-585-6201, 6202 Fax: 81-42-585-6187
<http://www.fic-net.jp/eng>