

9 5 1 - 2 X 0 E - X X X

XCede BACKPLANE MODULE MALE STANDARD LOAD

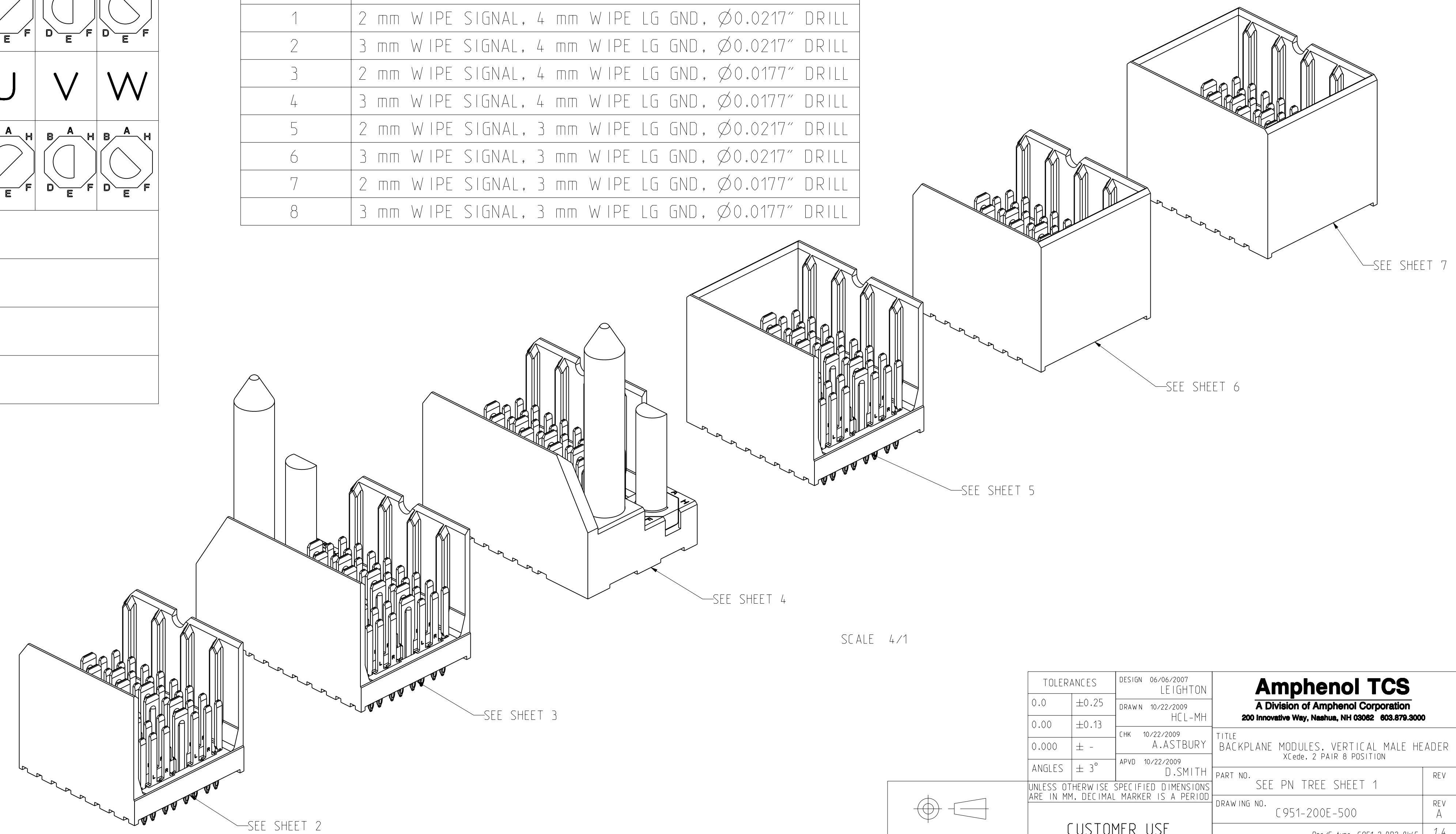
2 PAIR
8-POSITION

| LETTER | PLATING |
|--------|-----------------------------|
| B | 30 MICROINCH GOLD |
| C | 50 MICROINCH GOLD |
| D | 30 MICROINCH GOLD, LEADFREE |
| E | 50 MICROINCH GOLD, LEADFREE |

| NUMBER | PIN STYLE, HEIGHT |
|--------|-----------------------------------|
| 0 | GUIDE PIN MACHINED, 25.7mm / NONE |
| 1 | GUIDE PIN ROLLED, 25.7mm |

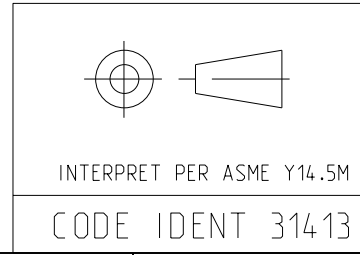
| | LETTER | | | | | | | | | |
|--|------------------------|---------------|---|---|---|---|---|---|---|---|
| LEFT POLARIZING GUIDANCE (SEE SHEET 3) | N | J (NO KEY) | A | B | C | D | E | F | G | H |
| | NO KEY NO GUIDE PIN | | | | | | | | | |
| RIGHT POLARIZING GUIDANCE (SEE SHEET 4) | Z | Y (NO KEY) | P | Q | R | S | T | U | V | W |
| | NO KEY NO GUIDE PIN | | | | | | | | | |
| OPEN (SEE SHEET 2) | O (ZERO) | | | | | | | | | |
| LEFT WALL (SEE SHEET 5) | L | | | | | | | | | |
| RIGHT WALL (SEE SHEET 6) | M | | | | | | | | | |
| TWO WALL (SEE SHEET 7) | 1 | | | | | | | | | |

| NUMBER | SIGNAL & LG. GROUND WIPE LENGTH, COMPLIANT PIN SIZE |
|--------|---|
| 1 | 2 mm WIPE SIGNAL, 4 mm WIPE LG GND, Ø0.0217" DRILL |
| 2 | 3 mm WIPE SIGNAL, 4 mm WIPE LG GND, Ø0.0217" DRILL |
| 3 | 2 mm WIPE SIGNAL, 4 mm WIPE LG GND, Ø0.0177" DRILL |
| 4 | 3 mm WIPE SIGNAL, 4 mm WIPE LG GND, Ø0.0177" DRILL |
| 5 | 2 mm WIPE SIGNAL, 3 mm WIPE LG GND, Ø0.0217" DRILL |
| 6 | 3 mm WIPE SIGNAL, 3 mm WIPE LG GND, Ø0.0217" DRILL |
| 7 | 2 mm WIPE SIGNAL, 3 mm WIPE LG GND, Ø0.0177" DRILL |
| 8 | 3 mm WIPE SIGNAL, 3 mm WIPE LG GND, Ø0.0177" DRILL |



- NOTES:
- REFER TO TB-2150 FOR XCede PRODUCT SPECIFICATIONS.
 - NOTCH DESIGNATES "ROW A" SIDE OF SHROUD. NOTCH FEATURE ON OPPOSITE SIDE FROM PART MARKING.
 - PART MARKING AS FOLLOWS:
LINE 1: "ATCS" AND DATECODE (ATCS YYWW).
LINE 2: MODULE PART NUMBER (951-###-###).
LINE 3: WORK ORDER NUMBER (#####).
WHERE "*" DENOTES MANUFACTURING LOCATION.
 - PLATING THICKNESS OF SIGNAL CONTACT AND GROUND CONTACT IS DETERMINED BY PLATING CODE. SEE PART NUMBER TREE SHEET 1.
 - REPAIR PROCEDURE FOR MODULE. SEE TB-2210.
 - SEE TB-2149 FOR ROUTING GUIDELINES & PTH REQ'S.
 - SEE DOC C190-1001-000 FOR TOOLING KEEPOUT ZONES.
 - BACKPLANE DATUM REFERENCE.
 - OPTIONAL HOLE/MOUNTING SCREW LOCATION FOR GROUNDED PIN OR ADDITIONAL GUIDE PIN SUPPORT. REFER TO TB-2211 FOR PROPER GUIDE PIN SELECTION AND DRAWING C942-2010-000 FOR OPTIONAL HOLE DETAILS. ONLY APPLIES FOR MACHINED GUIDE PIN APPLICATIONS.
 - DIMENSIONS APPLY FOR BOTH COMPLIANT PIN SIZES.

SCALE 4/1

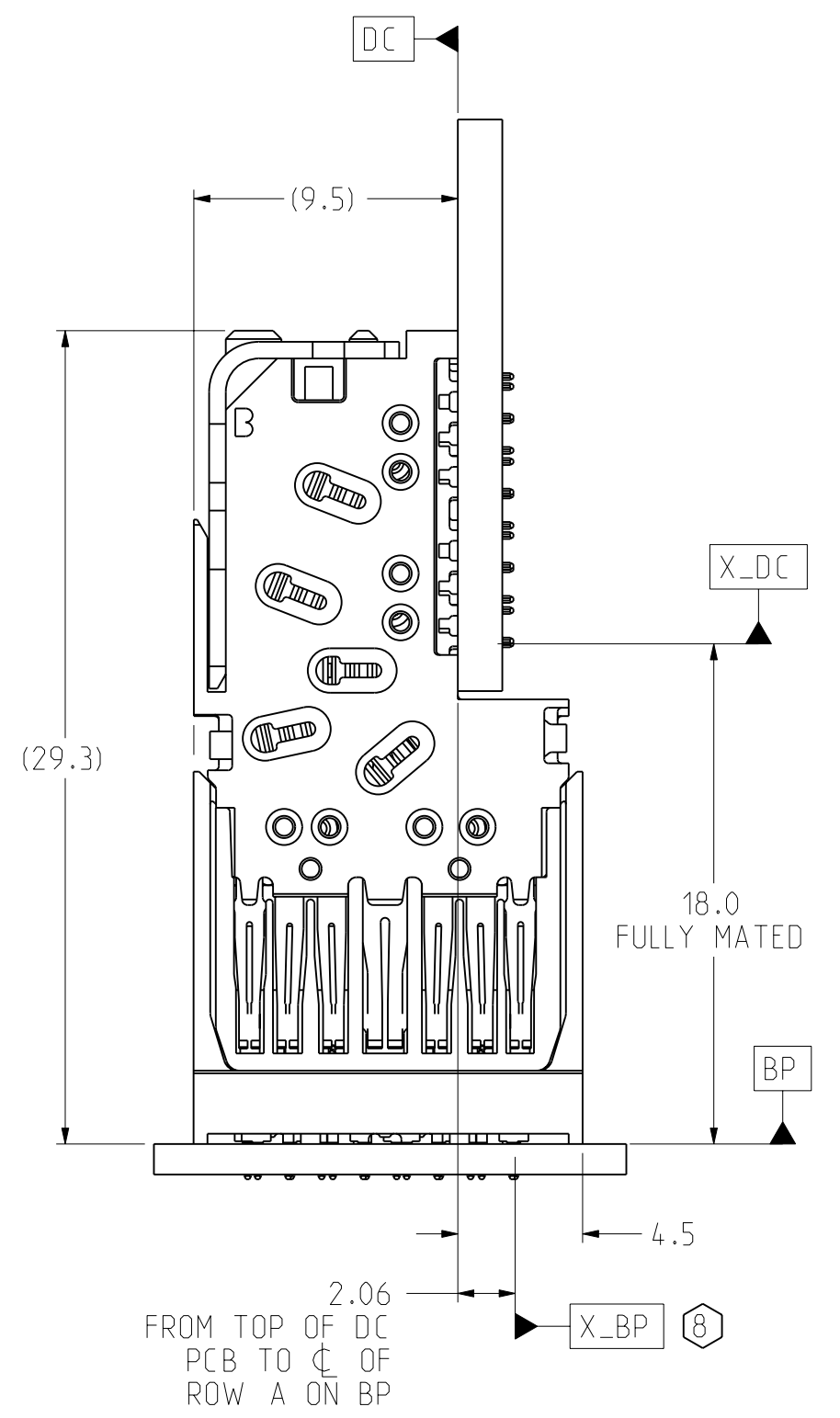
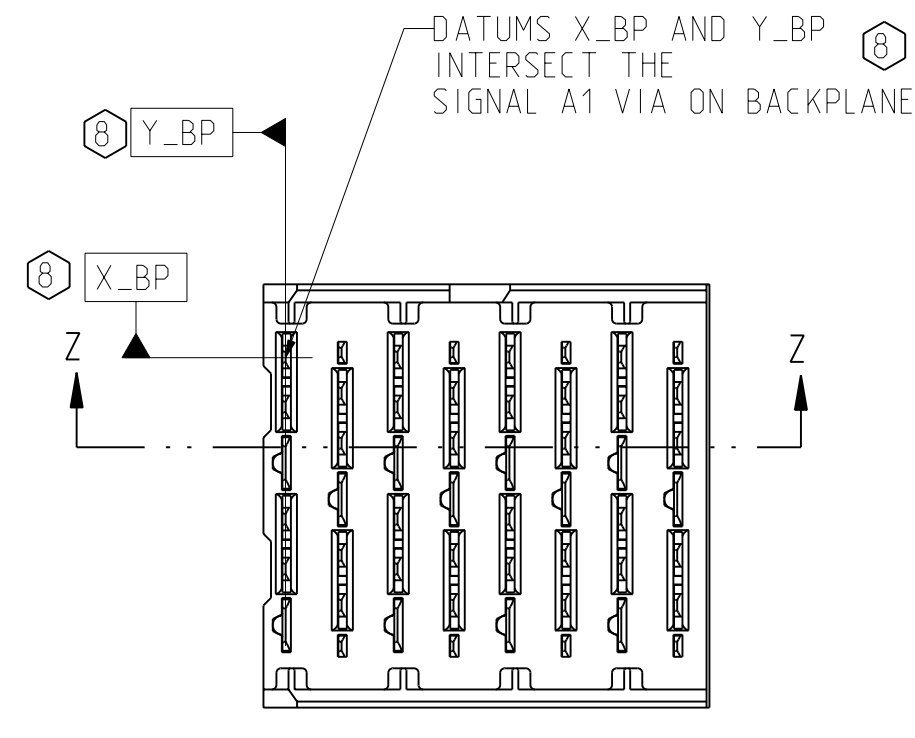


| | | | | | | | |
|----------------------|--|--|-------------|---|-----|-------|--------|
| TOLERANCES | DESIGN 06/06/2007 LEIGHTON | Amphenol TCS A Division of Amphenol Corporation 200 Innovative Way, Nashua, NH 03062 603.879.3000 | TITLE | BACKPLANE MODULES, VERTICAL MALE HEADER XCede, 2 PAIR B POSITION | | | |
| 0.0 ±0.25 | DRAWN 10/22/2009 HCL-MH | | PART NO. | SEE PN TREE SHEET 1 | | | |
| 0.00 ±0.13 | CHK 10/22/2009 A.ASTBURY | | DRAWING NO. | C951-200E-500 | | | |
| 0.000 ± - | APVD 10/22/2009 D.SMITH | | PROJ. TYPE | C951-2-BP2-BWF C951-200E-500-BP2-MODULES-BWAF | | | |
| ANGLES ± 3° | UNLESS OTHERWISE SPECIFIED DIMENSIONS ARE IN MM. DECIMAL MARKER IS A PERIOD. | REV | 1.4 3.15 | 1.4 3.15 | | | |
| CUSTOMER USE DRAWING | | SIZE | D | SCALE | 4/1 | SHEET | 1 OF 8 |

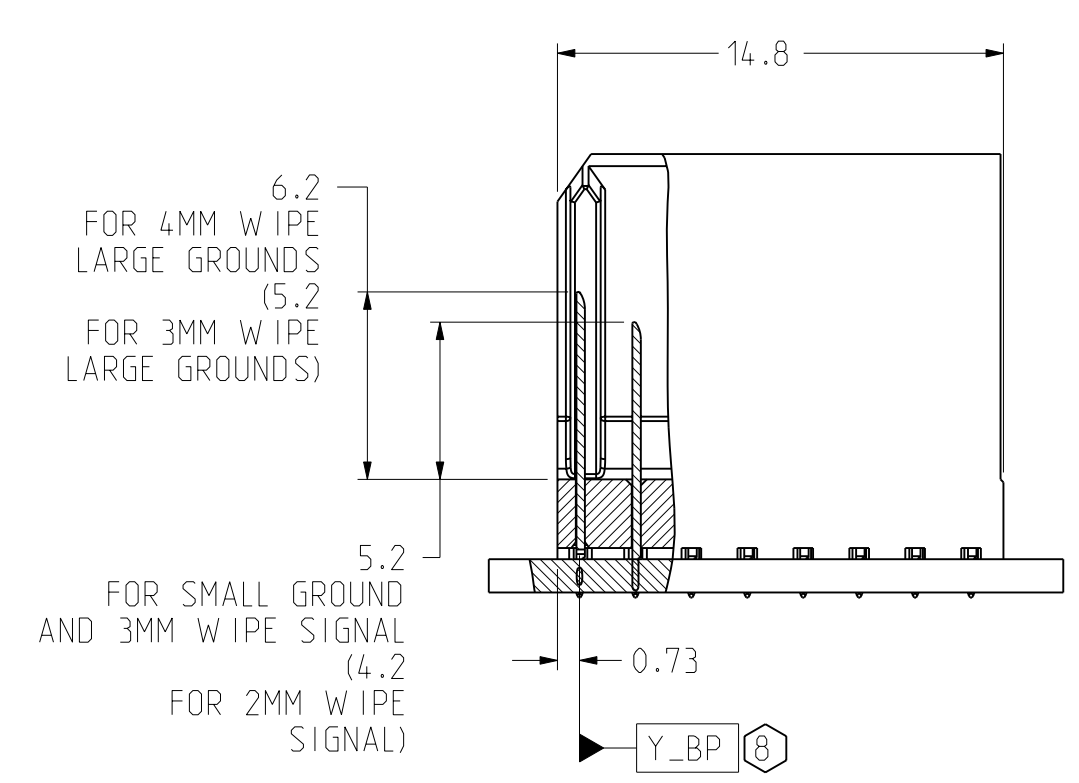
DRW NO. C951-200E-500

SH 1 REV A

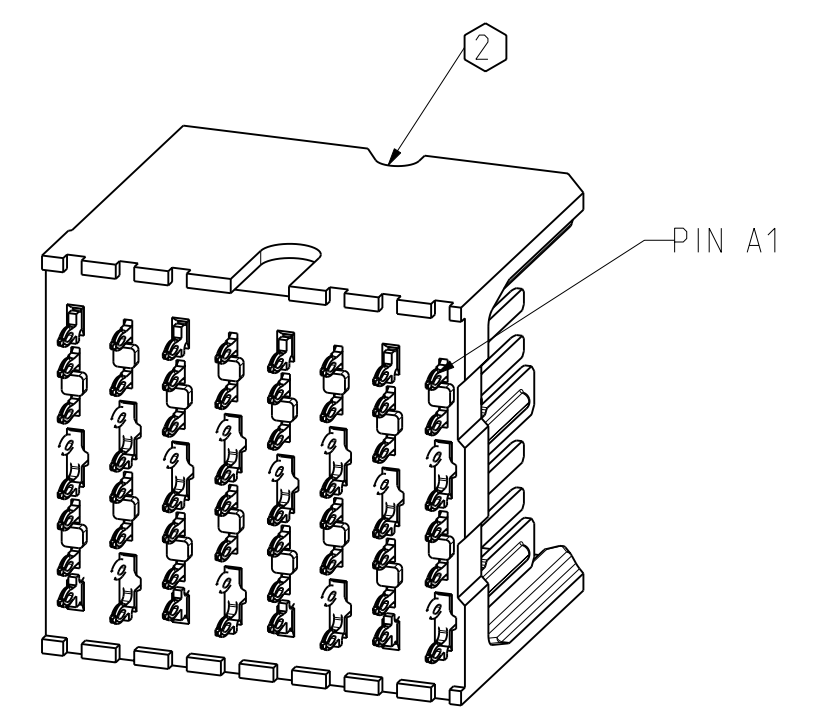
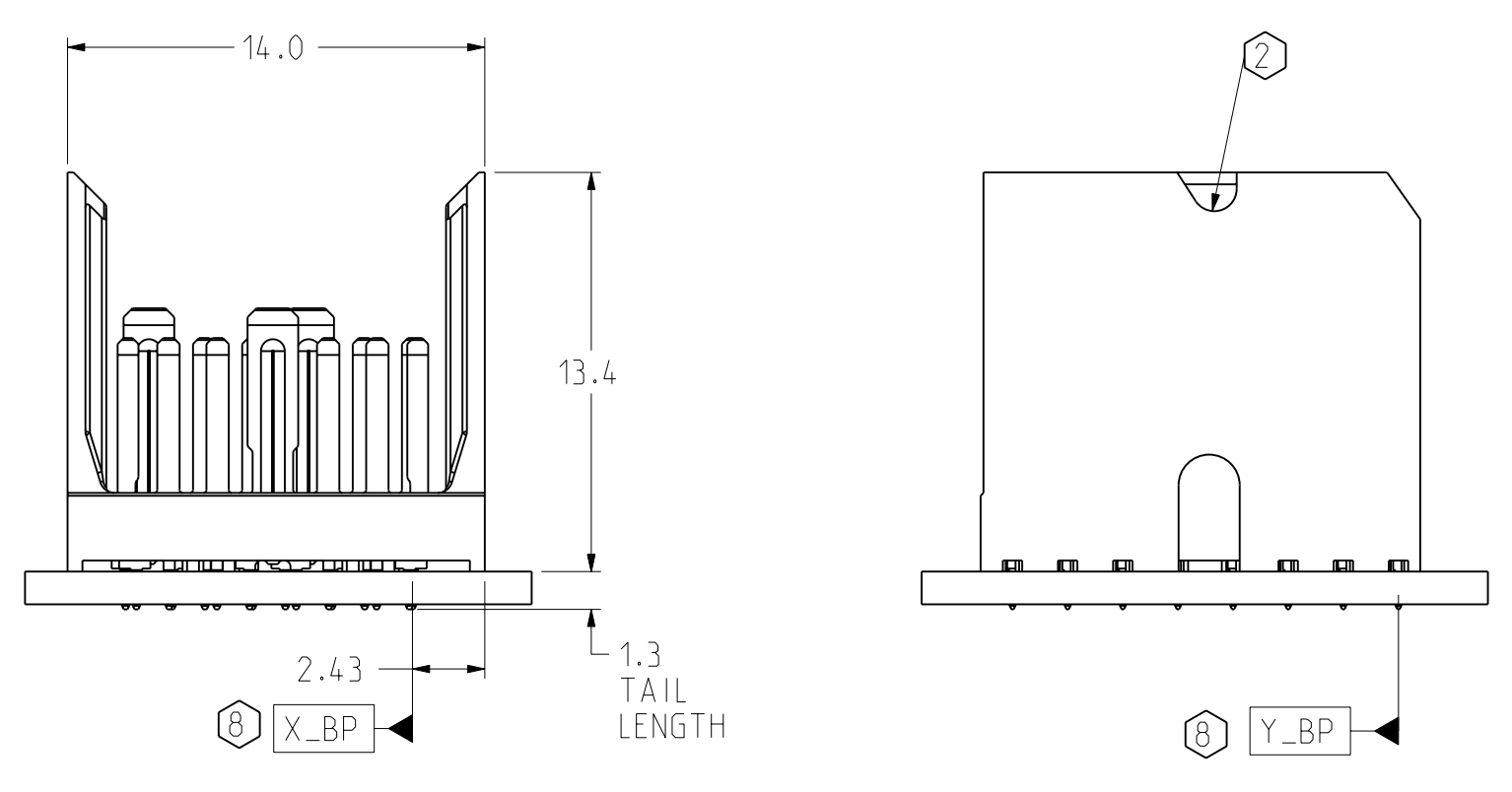
OPEN BACKPLANE MODULE DIMENSION



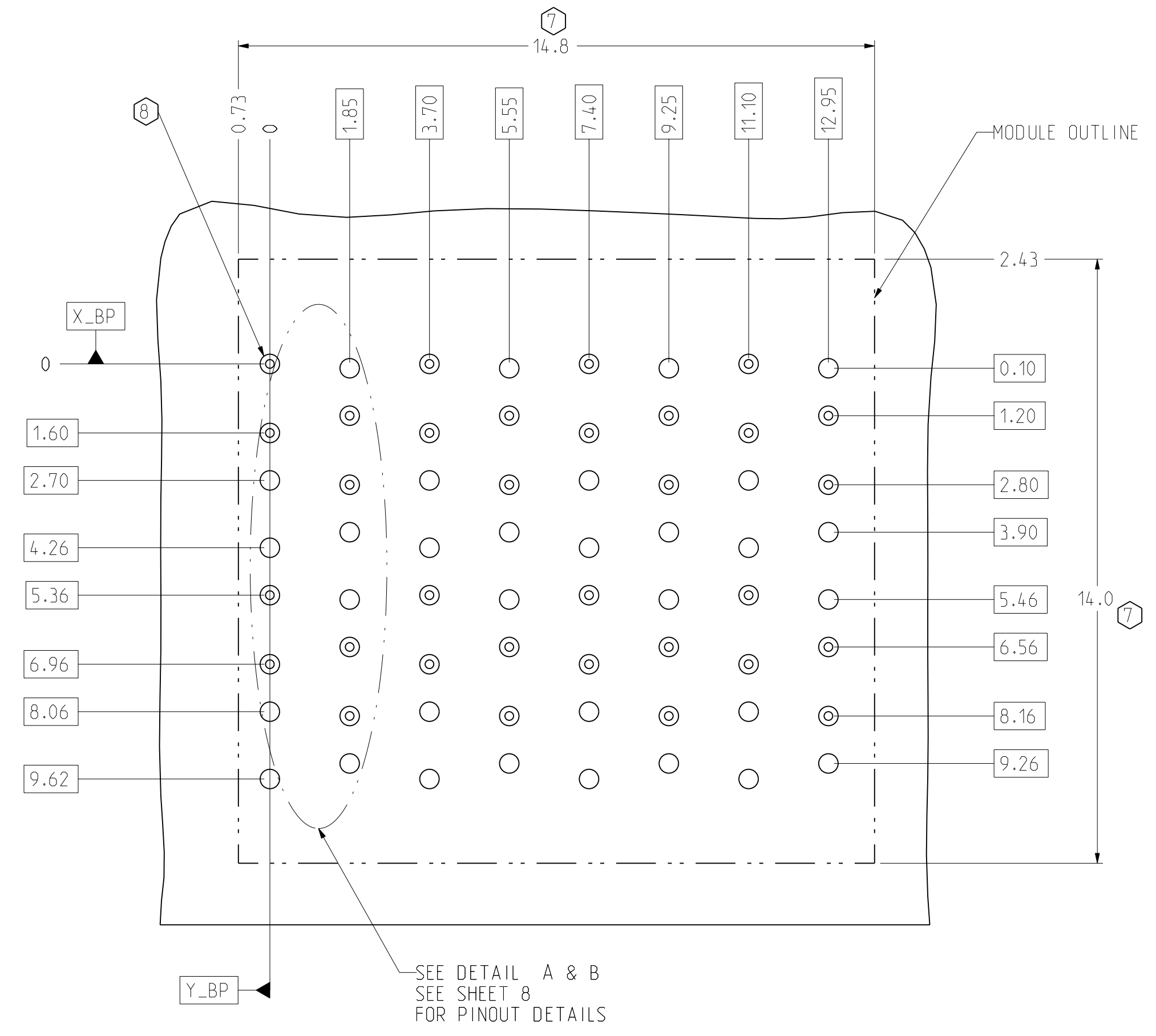
CONNECTOR REFERENCE SCALE 4/1



SECTION Z-Z



ISOMETRIC VIEW SCALE 4/1



BP HOLE PATTERN COMPONENT SIDE SCALE 10/1

OPEN BACKPLANE FOOTPRINT

| TOLERANCES | | DESIGN 06/06/2007 | Amphenol TCS | |
|---|-----------|-------------------|---|-------|
| 0.0 | ±0.25 | LEIGHTON | A Division of Amphenol Corporation | |
| 0.00 | ±0.13 | DRAWN 10/22/2009 | 200 Innovative Way, Nashua, NH 03062 603.879.3000 | |
| 0.000 | ± - | CHK 10/22/2009 | TITLE BACKPLANE MODULES, VERTICAL MALE HEADER | |
| ANGLES | ± 3° | APVD 10/22/2009 | XCede, 2 PAIR B POSITION | |
| UNLESS OTHERWISE SPECIFIED DIMENSIONS ARE IN MM. DECIMAL MARKER IS A PERIOD | | | PART NO. SEE PN TREE SHEET 1 | REV |
| | | | DRAWING NO. C951-200E-500 | REV A |
| | | | Pro/E Type: C951-2-BP2-BWF | 1.4 |
| | | | Pro/E DRAWING: C951-200E-500-BP2-MODULES-BWAF | 3.75 |
| SIZE D | SCALE 5/1 | SHEET 2 OF 8 | | |

INTERPRET PER ASME Y14.5M
CODE IDENT 31413

CUSTOMER USE DRAWING

DRW NO. C951-200E-500

SH 2 REV A

8

7

6

5

4

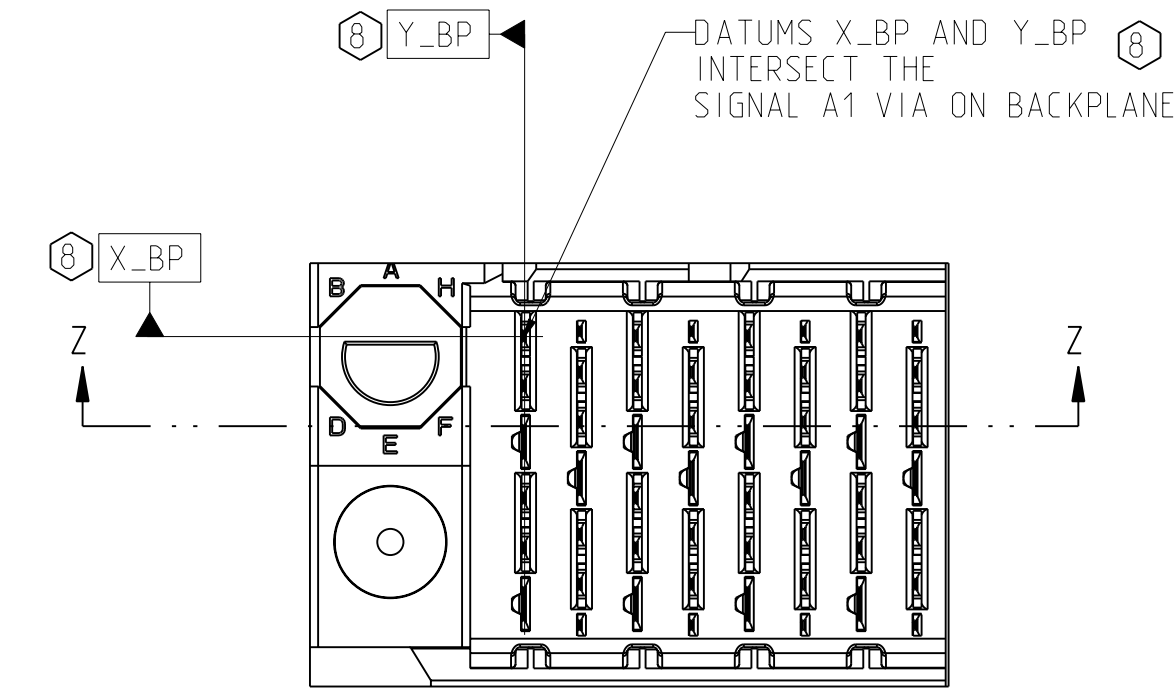
3

D

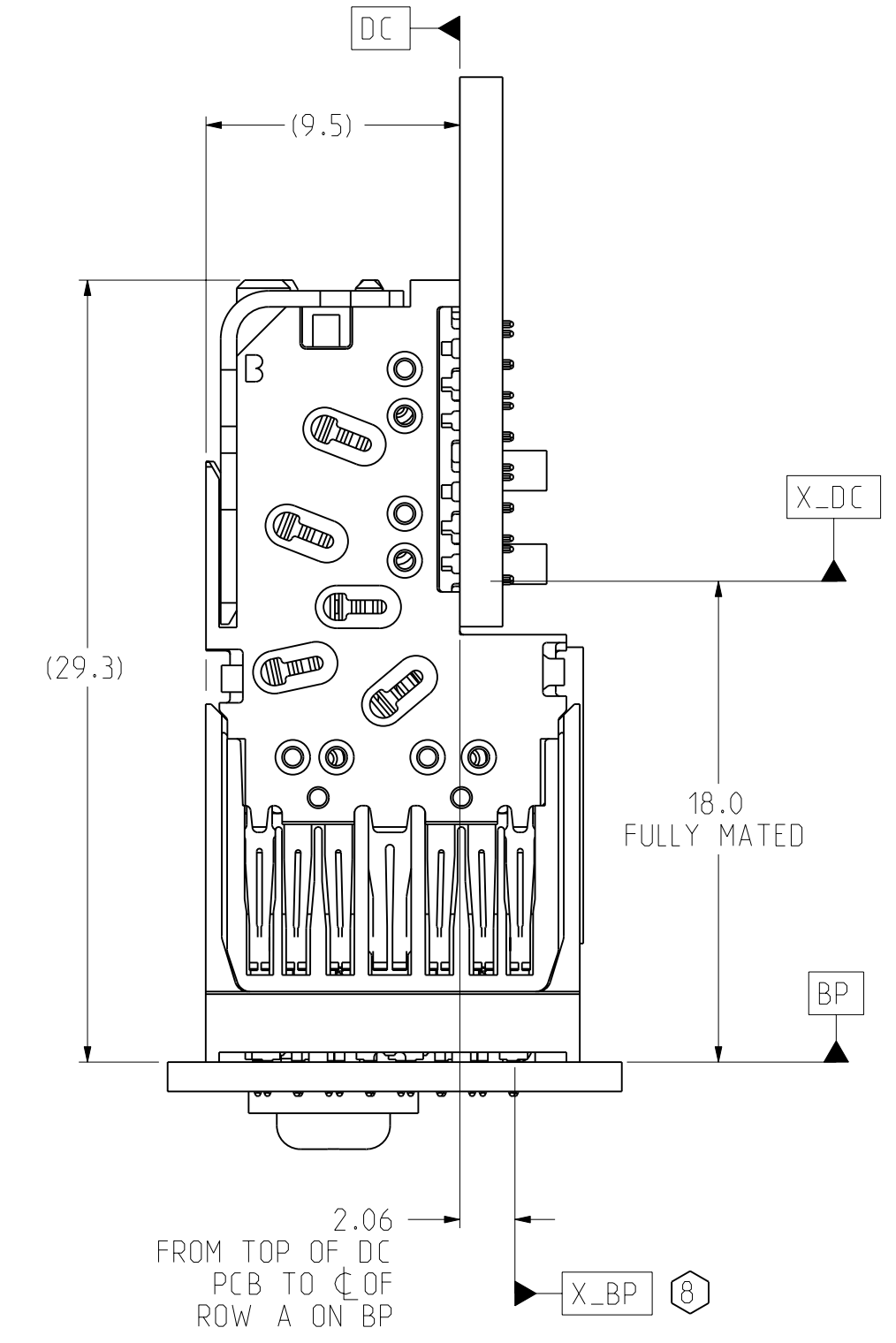
C

B

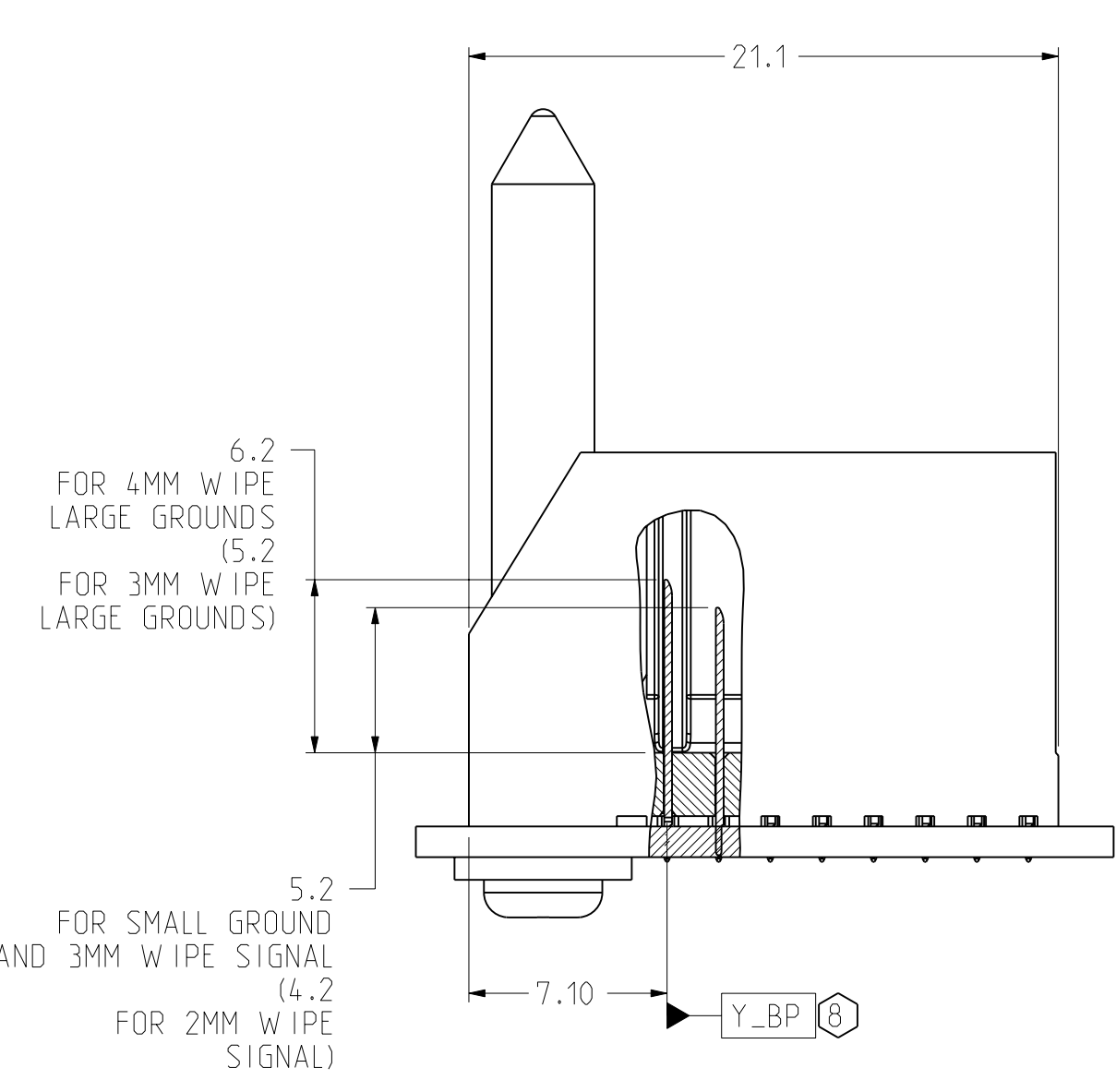
A



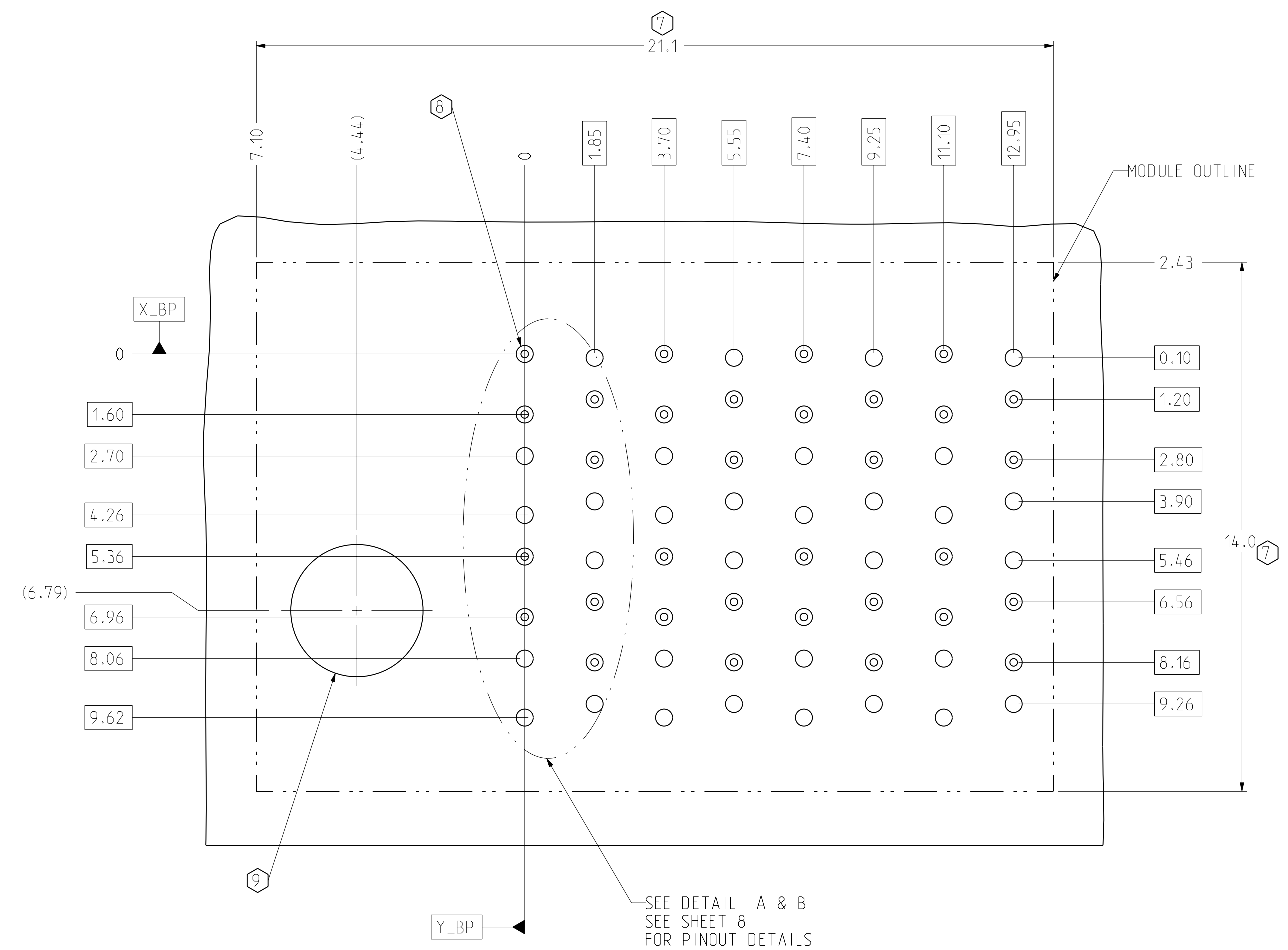
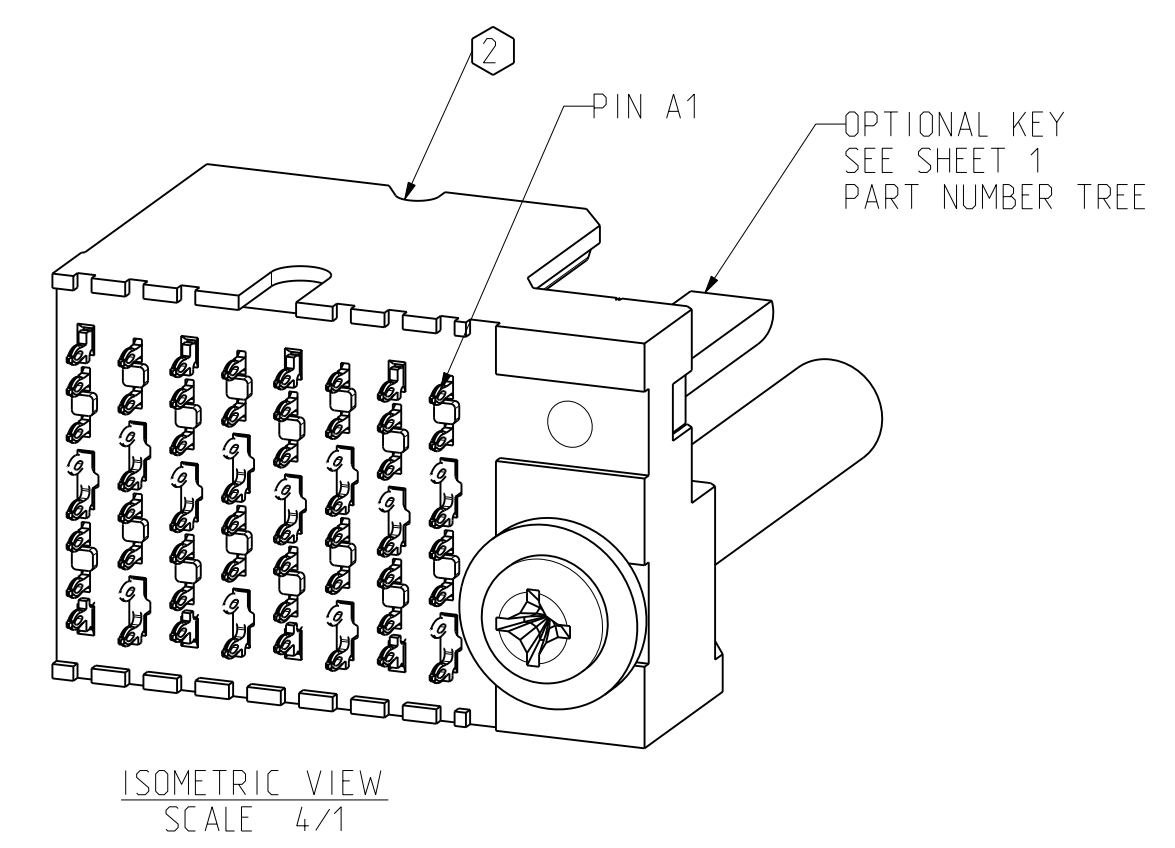
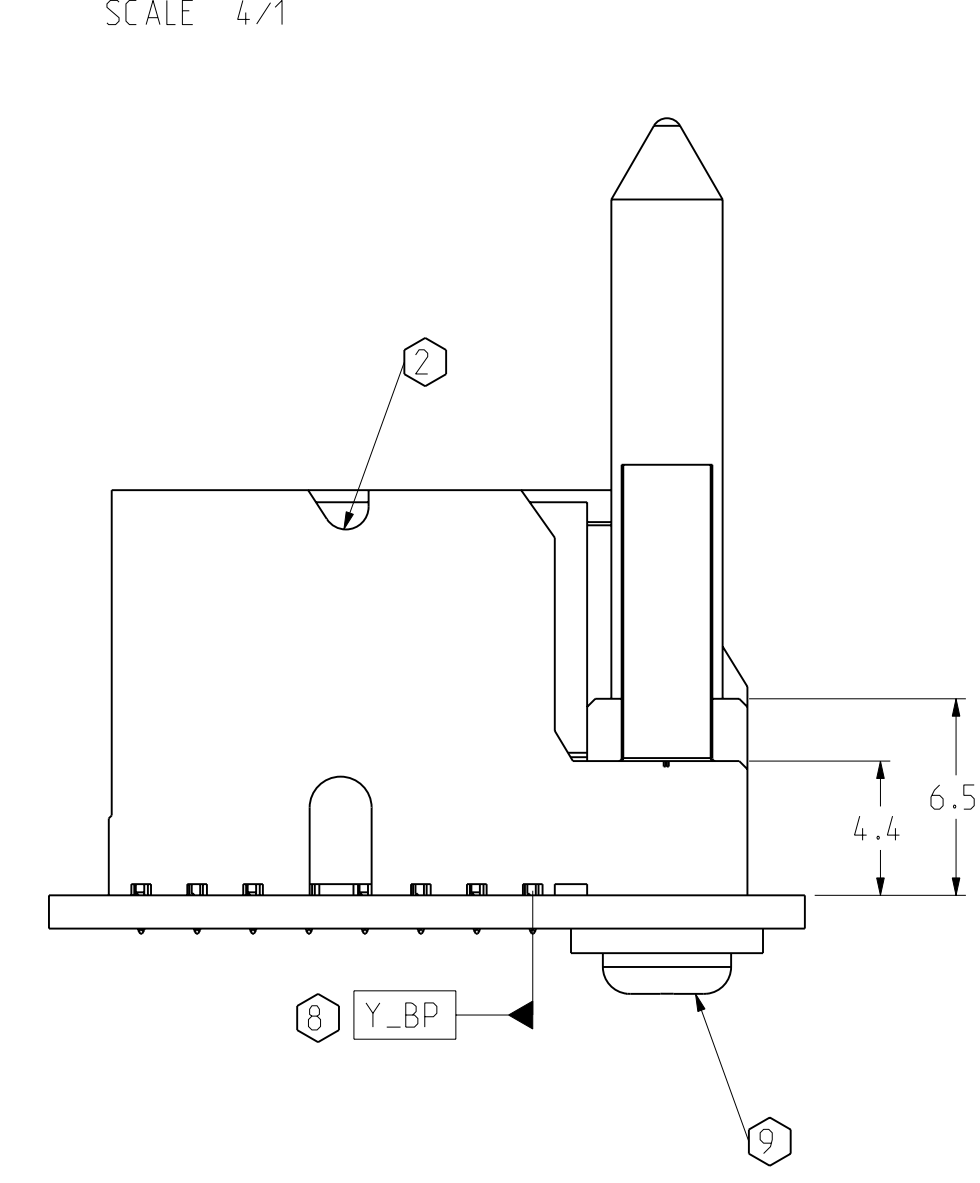
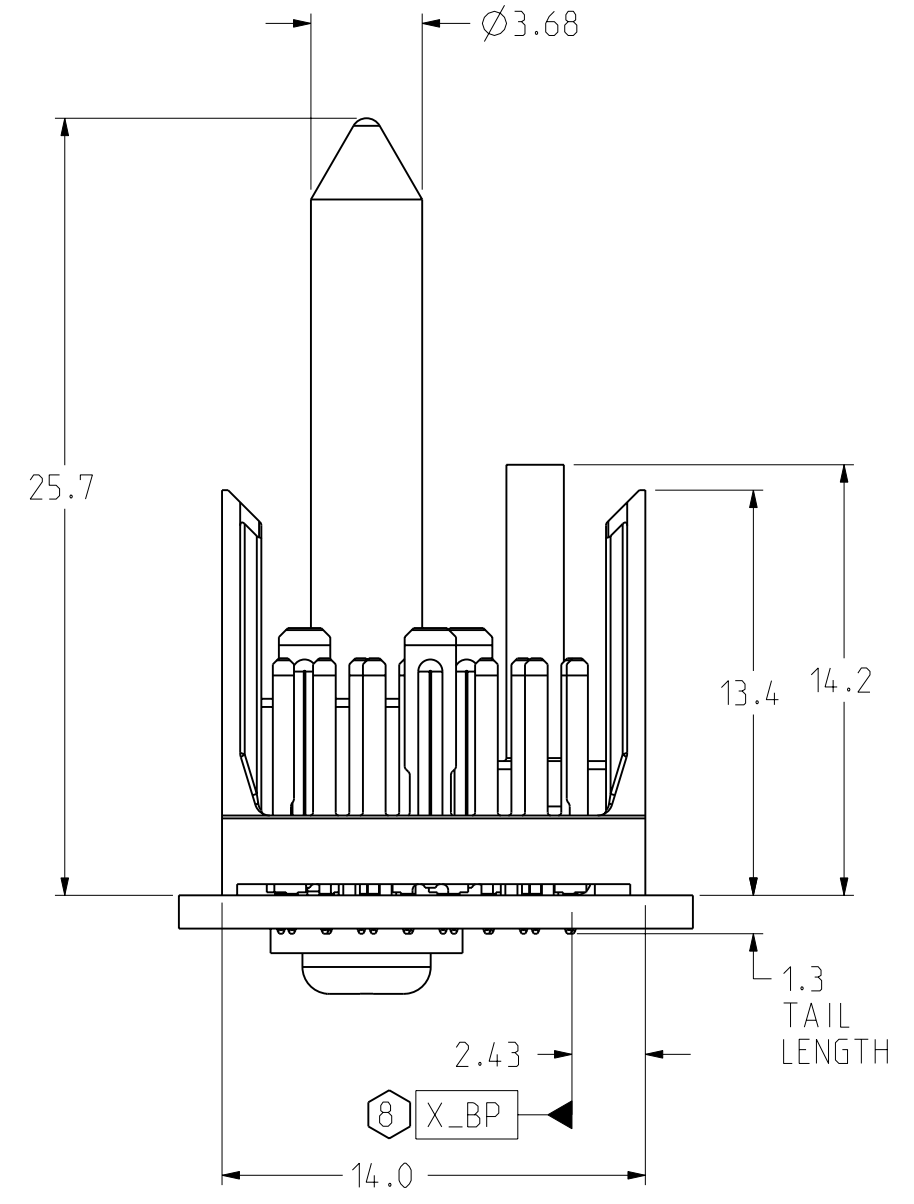
LEFT POLARIZING/GUIDE BACKPLANE MODULE DIMENSION



CONNECTOR REFERENCE SCALE 4/1



SECTION Z-Z



BP HOLE PATTERN COMPONENT SIDE SCALE 10/1

LEFT POLARIZING/GUIDE BACKPLANE FOOTPRINT

| TOLERANCES | | DESIGN 06/06/2007 | Amphenol TCS A Division of Amphenol Corporation 200 Innovative Way, Nashua, NH 03062 803.879.3000 | TITLE | |
|---|-------|-------------------|--|---|--|
| 0.0 | ±0.25 | DRAWN 10/22/2009 | | BACKPLANE MODULES, VERTICAL MALE HEADER | |
| 0.00 | ±0.13 | CHK 10/22/2009 | | XCede, 2 PAIR B POSITION | |
| 0.000 | ± - | APVD 10/22/2009 | | PART NO. SEE PN TREE SHEET 1 | |
| ANGLES ± 3° | | D.SMITH | REV A | | |
| UNLESS OTHERWISE SPECIFIED DIMENSIONS ARE IN MM. DECIMAL MARKER IS A PERIOD | | | DRAWING NO. C951-200E-500 | | |
| INTERPRET PER ASME Y14.5M CODE IDENT 31413 | | | CUSTOMER USE DRAWING | | |
| | | | Pro/E type: C951-2-BP2-BWF 1.4 Pro/E DRAWING: C951-200E-500-BP2-MODULES-BWAF 3.15 | | |
| | | | SIZE D | SHEET 3 OF 8 | |

DRW NO. C951-200E-500

SH 3

REV A

8

7

6

5

4

3

2

1

8

7

6

5

4

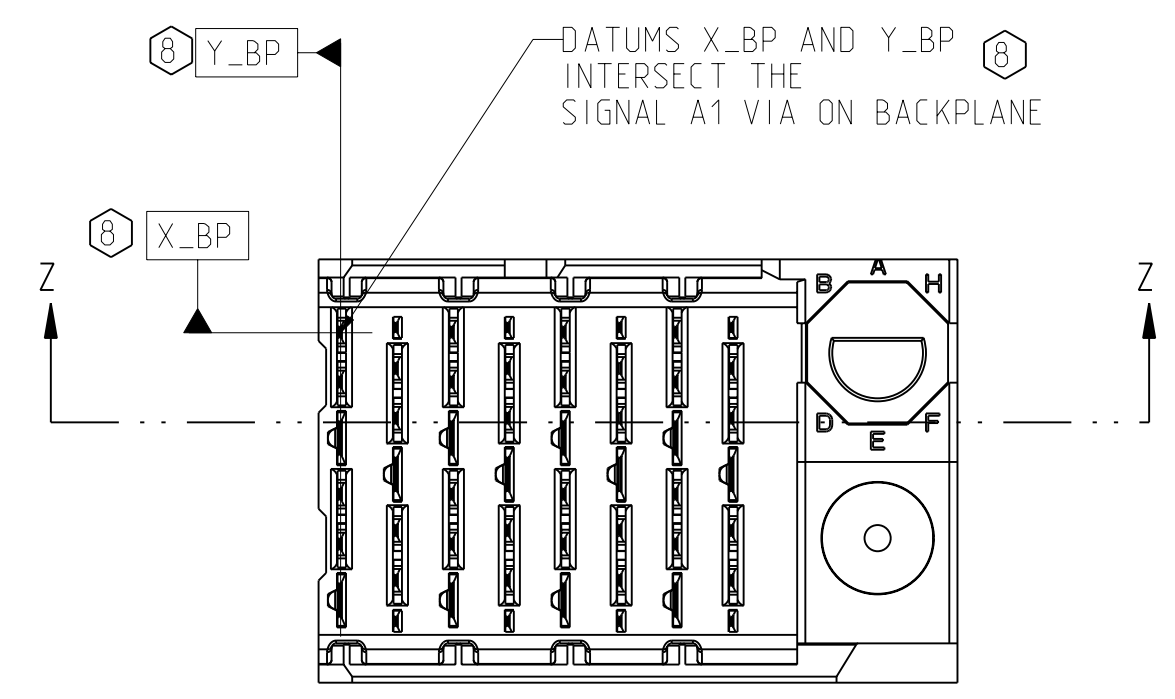
3

D

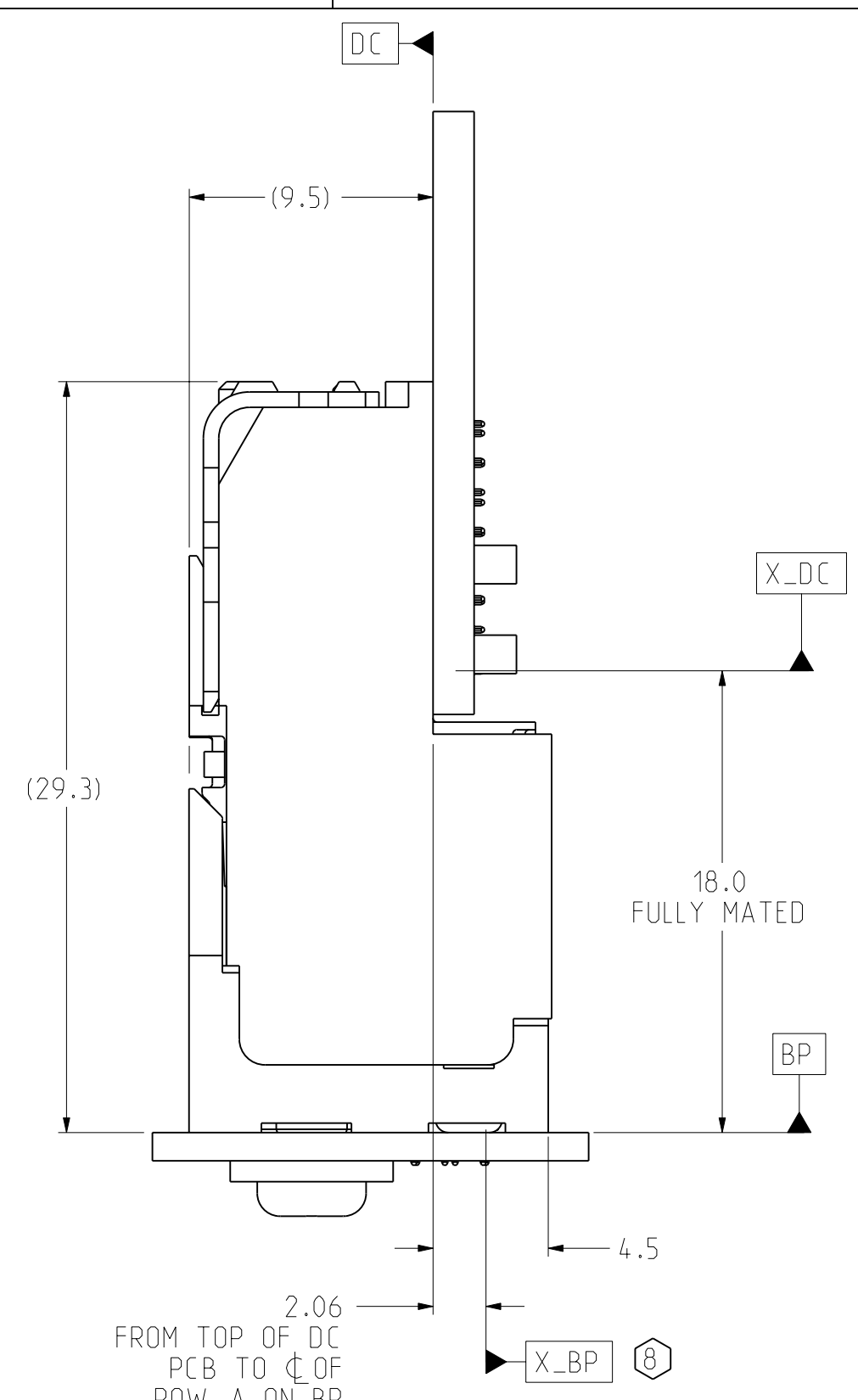
C

B

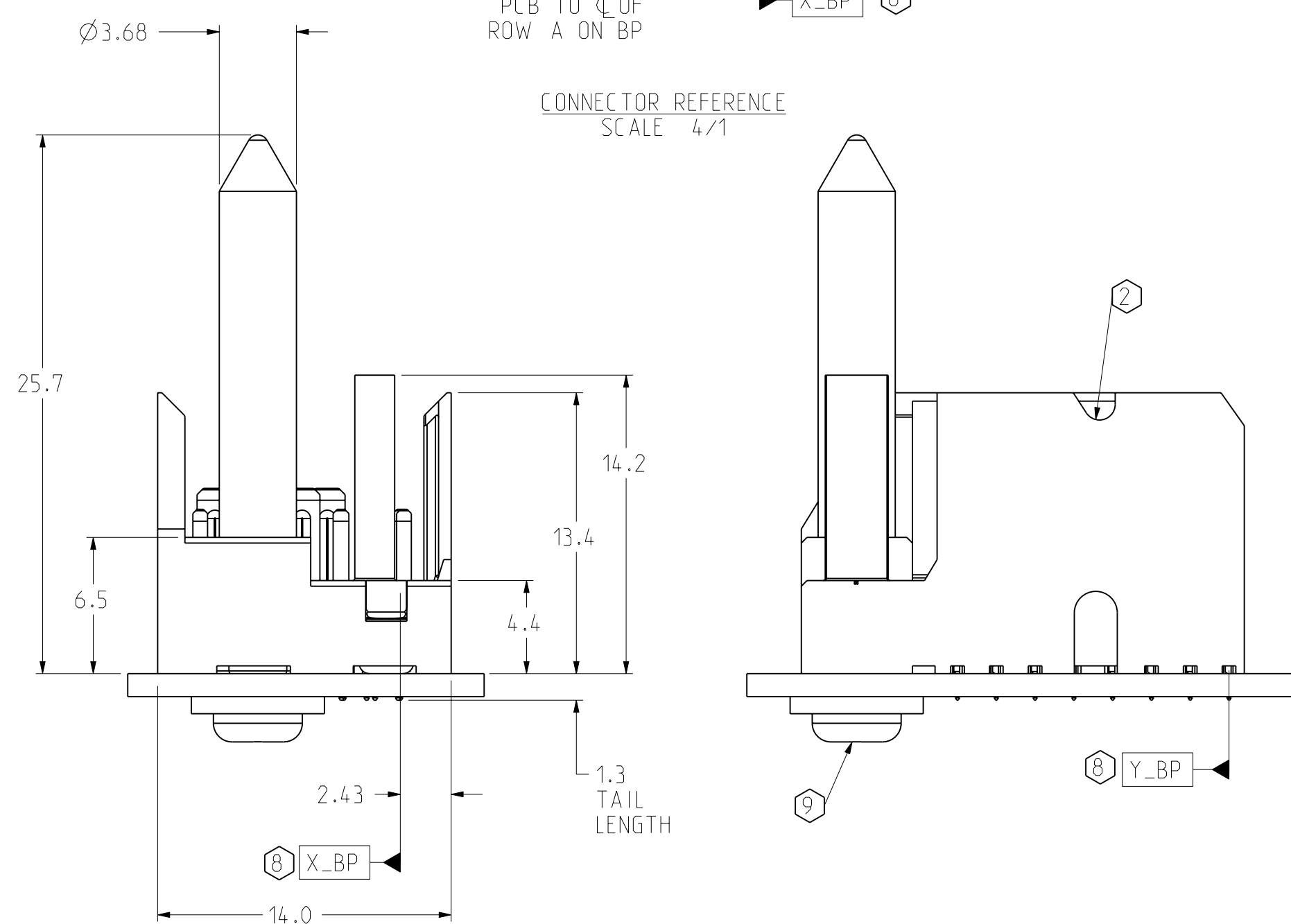
A



RIGHT POLARIZING/GUIDE BACKPLANE MODULE DIMENSION



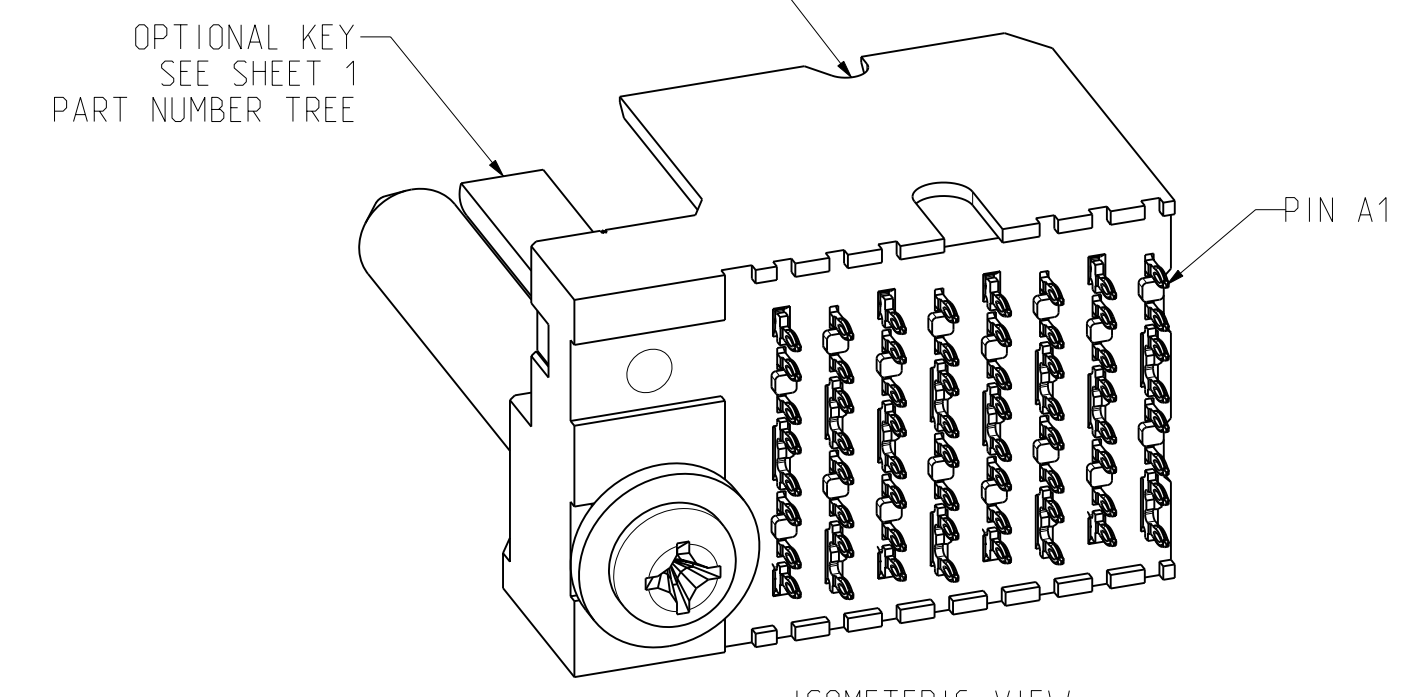
CONNECTOR REFERENCE SCALE 4/1



SECTION Z-Z

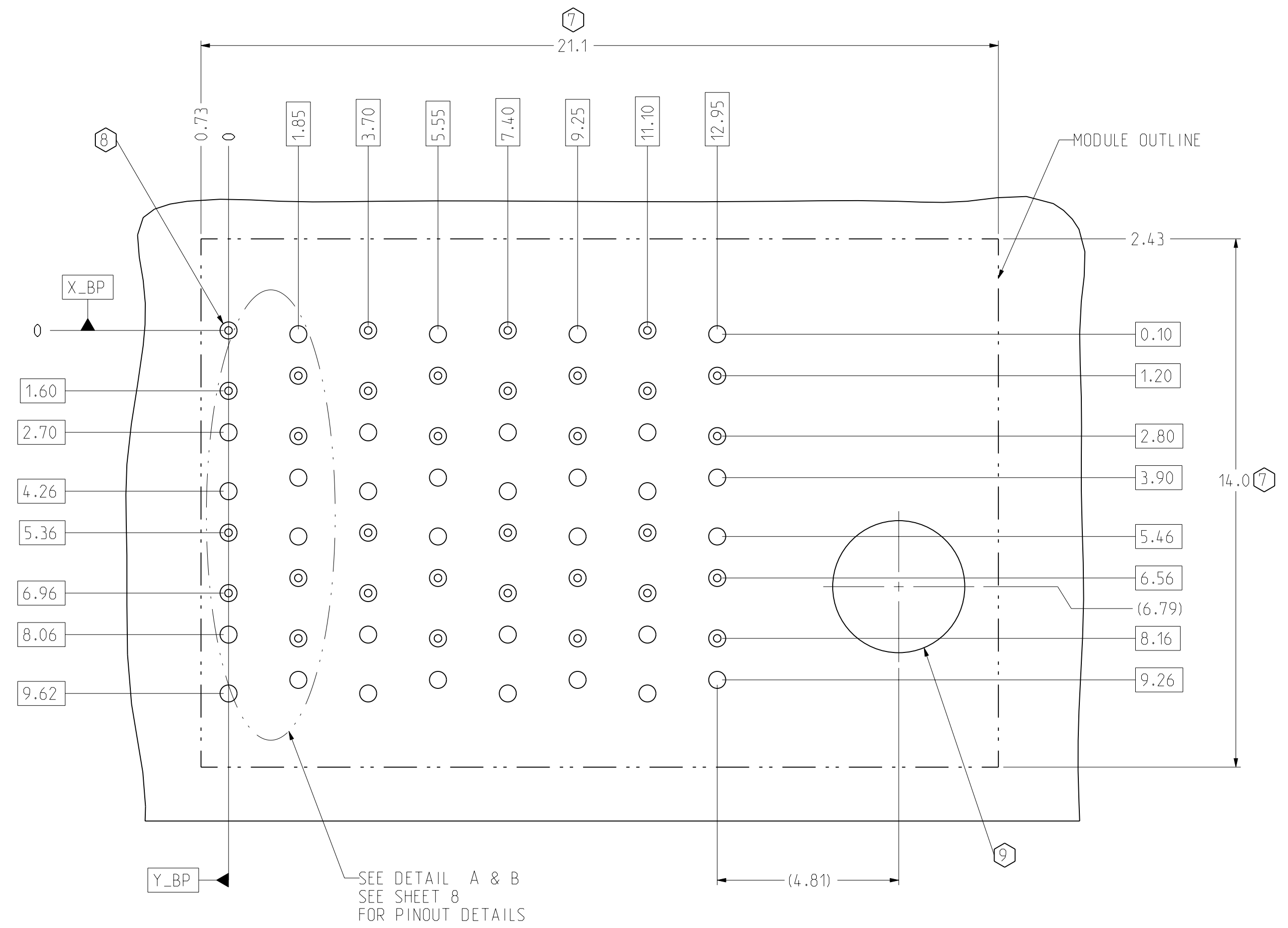
6.2 FOR 4MM WIPE LARGE GROUNDS (5.2 FOR 3MM WIPE LARGE GROUNDS)

5.2 FOR SMALL GROUND AND 3MM WIPE SIGNAL (4.2 FOR 2MM WIPE SIGNAL)



ISOMETRIC VIEW SCALE 4/1

OPTIONAL KEY SEE SHEET 1 PART NUMBER TREE



BP HOLE PATTERN COMPONENT SIDE SCALE 10/1

RIGHT POLARIZING/GUIDE BACKPLANE FOOTPRINT

| TOLERANCES | | DESIGN 06/06/2007 LEIGHTON | | Amphenol TCS A Division of Amphenol Corporation 200 Innovative Way, Nashua, NH 03062 603.879.3000 | |
|---------------------------|-------|---|----------------------|--|--|
| 0.0 | ±0.25 | DRAWN | 10/22/2009 HCL-MH | TITLE | BACKPLANE MODULES, VERTICAL MALE HEADER Xcete, 2 PAIR B POSITION |
| 0.00 | ±0.13 | CHK | 10/22/2009 A.ASTBURY | PART NO. | SEE PN TREE SHEET 1 |
| 0.000 | ± | APVD | 10/22/2009 D.SMITH | REV | REV A |
| ANGLES ± 3° | | UNLESS OTHERWISE SPECIFIED DIMENSIONS ARE IN MM. DECIMAL MARKER IS A PERIOD | | DRAWING NO. | C951-200E-500 |
| INTERPRET PER ASME Y14.5M | | CUSTOMER USE DRAWING | | PROJ. TYPE | C951-2-BP2-BWF 1.4 C951-200E-500-BP2-MODULES-BWAF 3.75 |
| CODE IDENT | 31413 | SIZE | D | SCALE | 4/1 |
| | | | SHEET | 4 | OF 8 |

DRW NO. C951-200E-500

SH 4

REV A

1

8

7

6

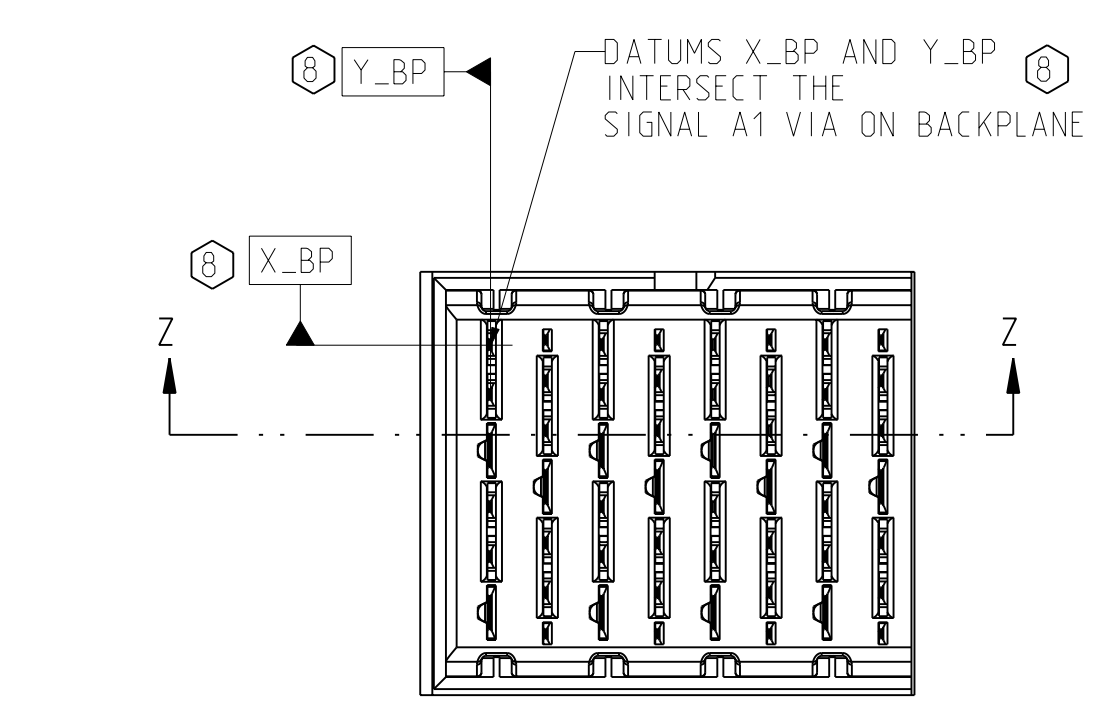
5

4

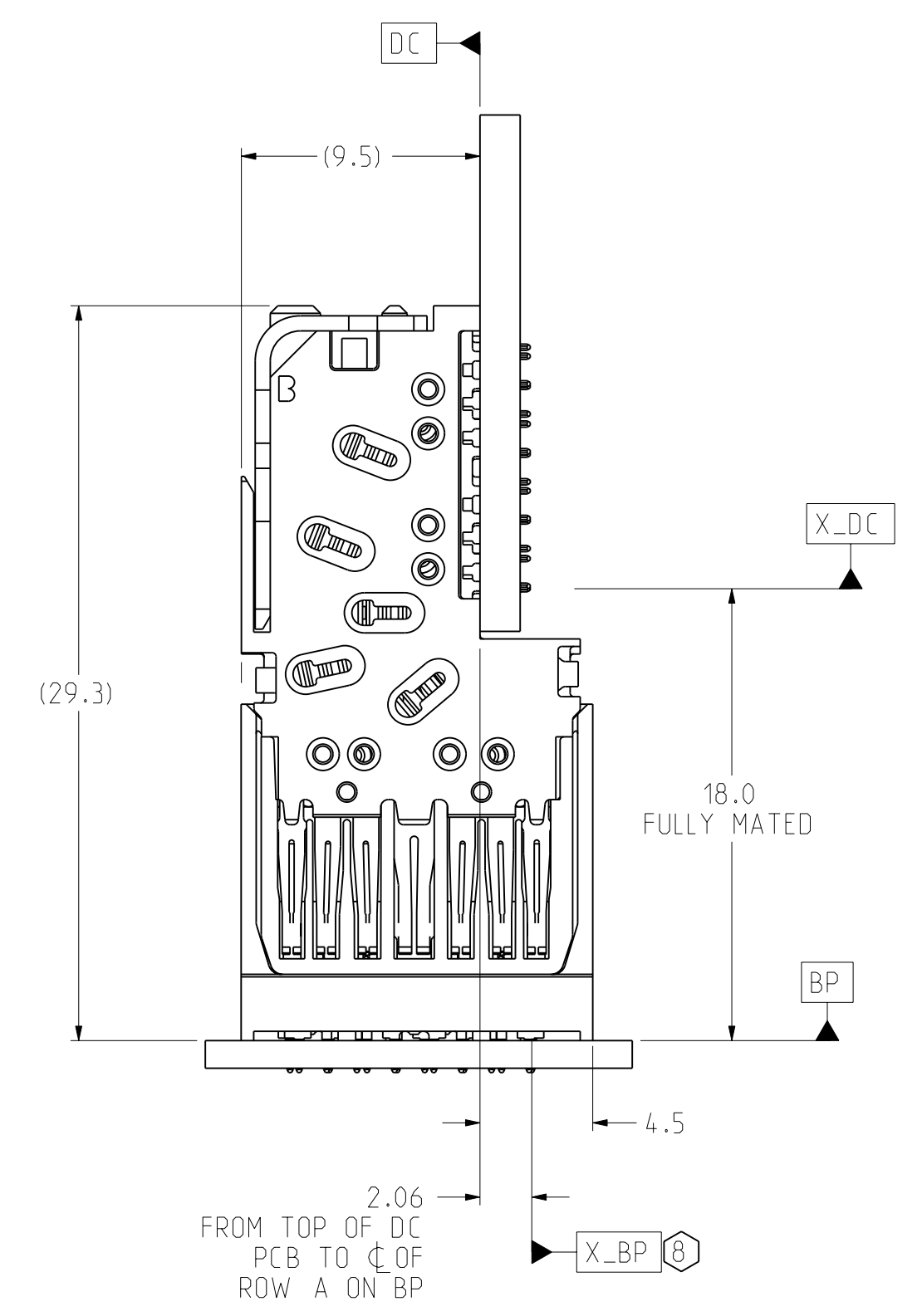
3

2

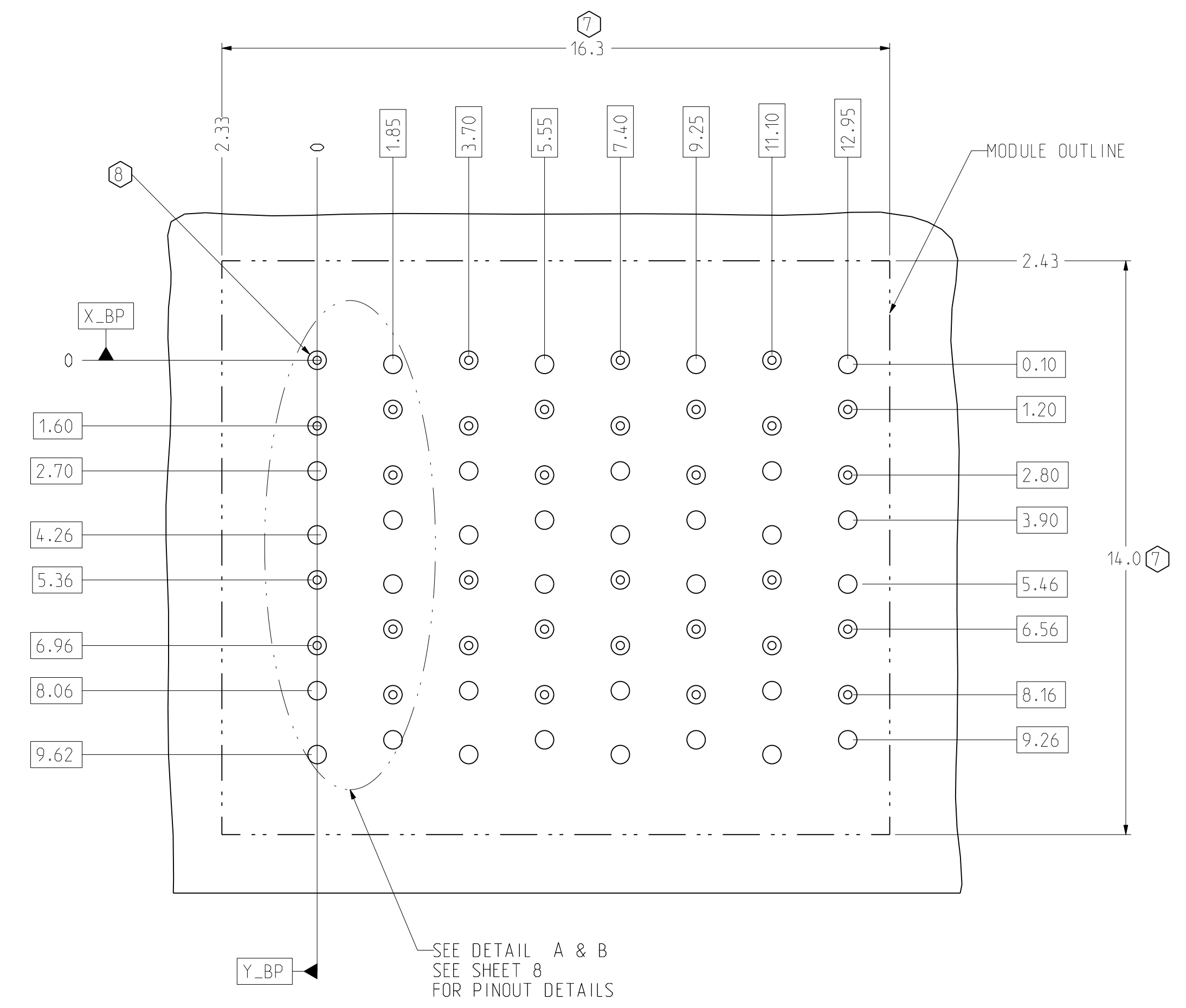
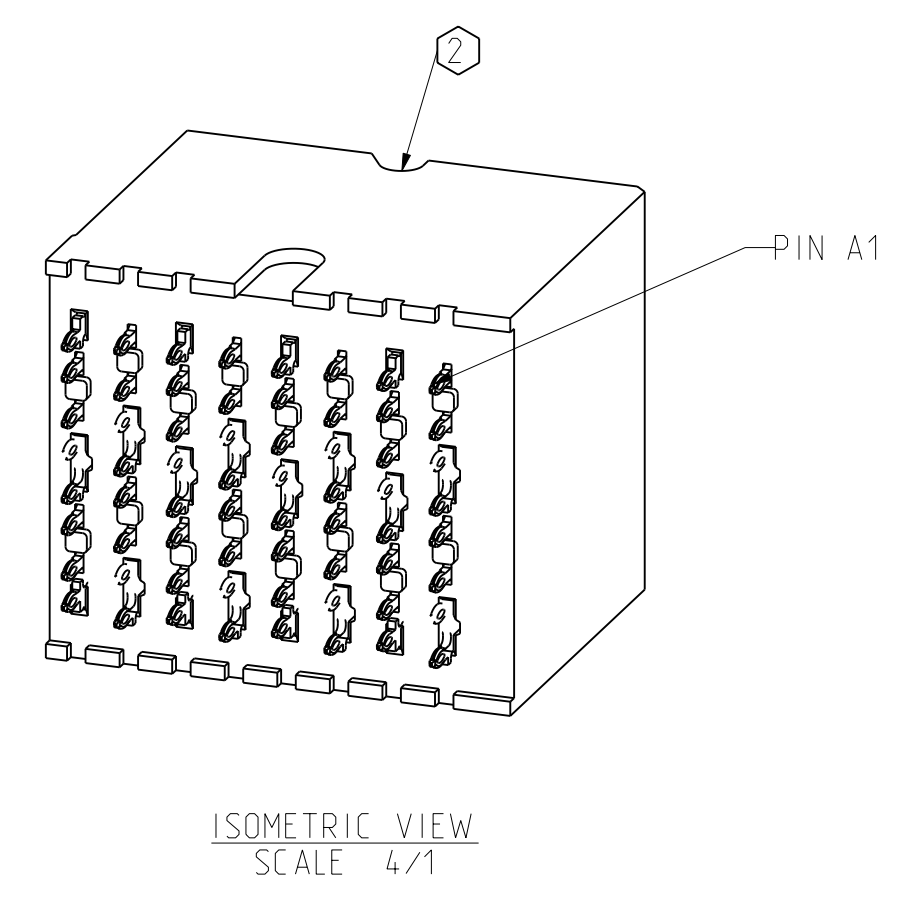
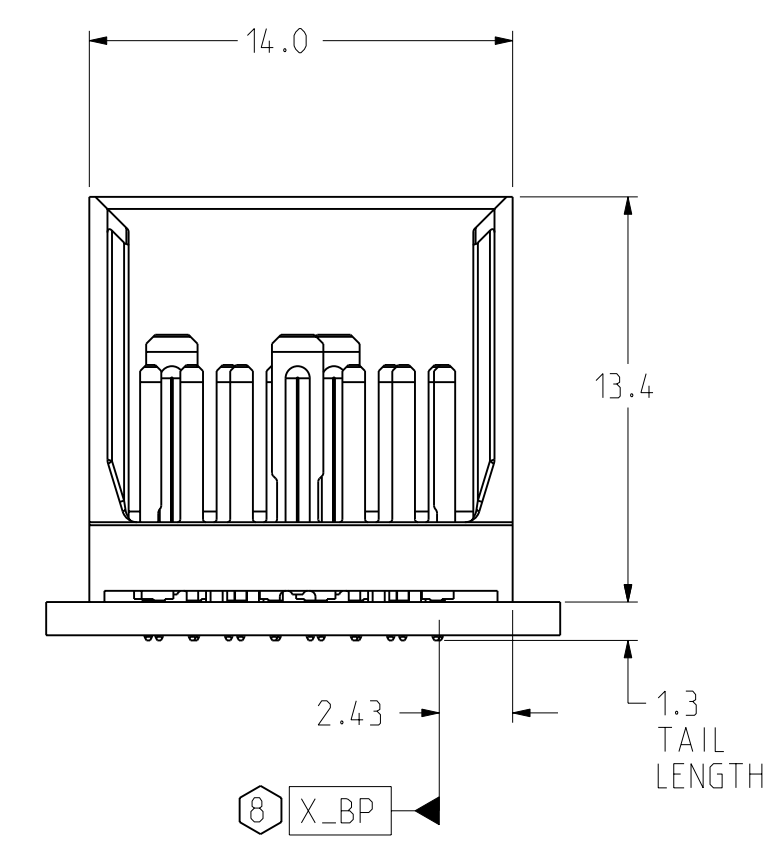
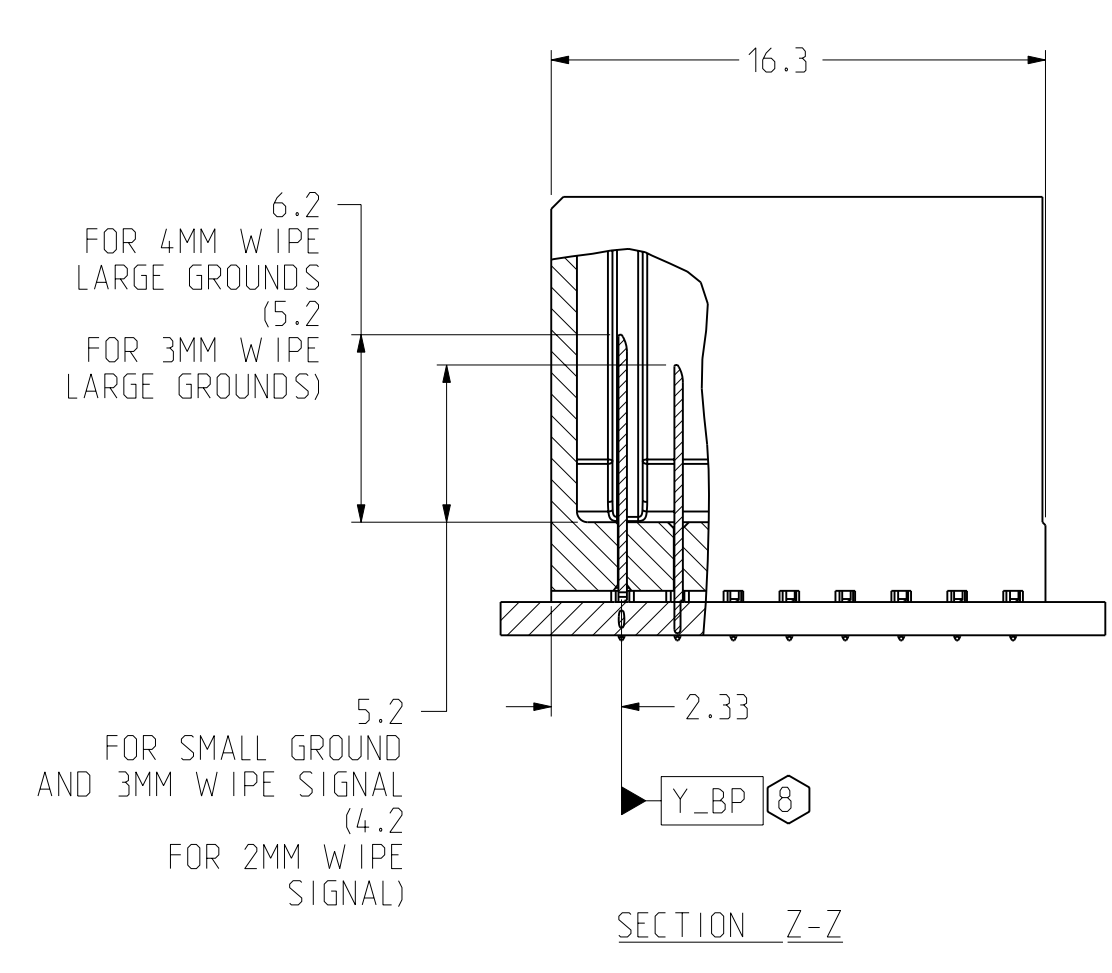
1



LEFT WALL BACKPLANE MODULE DIMENSION



CONNECTOR REFERENCE SCALE 4/1



LEFT WALL BACKPLANE FOOTPRINT

| TOLERANCES | | DESIGN 06/06/2007 | LEIGHTON | |
|------------|-------|---|-----------|--|
| 0.0 | ±0.25 | DRAWN 10/22/2009 | HCL-MH | |
| 0.00 | ±0.13 | CHK 10/22/2009 | A.ASTBURY | |
| 0.000 | ± - | APVD 10/22/2009 | D.SMITH | |
| ANGLES | ± 3° | UNLESS OTHERWISE SPECIFIED DIMENSIONS ARE IN MM. DECIMAL MARKER IS A PERIOD | | |

| | | | |
|--|-----------|--|--|
| Amphenol TCS A Division of Amphenol Corporation 200 Innovative Way, Nashua, NH 03062 603.879.3000 | | TITLE BACKPLANE MODULES, VERTICAL MALE HEADER XCede, 2 PAIR B POSITION | |
| PART NO. SEE PN TREE SHEET 1 | | REV | |
| DRAWING NO. C951-200E-500 | | REV A | |
| Pro/E type: C951-2-BP2-BWF | | 1.4 | |
| Pro/E DRAWING: C951-200E-500-BP2-MODULES-BWAF | | 3.15 | |
| SIZE D | SCALE 4/1 | SHEET 5 OF 8 | |

INTERPRET PER ASME Y14.5M
CODE IDENT 31413

CUSTOMER USE
DRAWING

DRW NO. C951-200E-500

SH 5 REV A

8

7

6

5

4

3

D

C

B

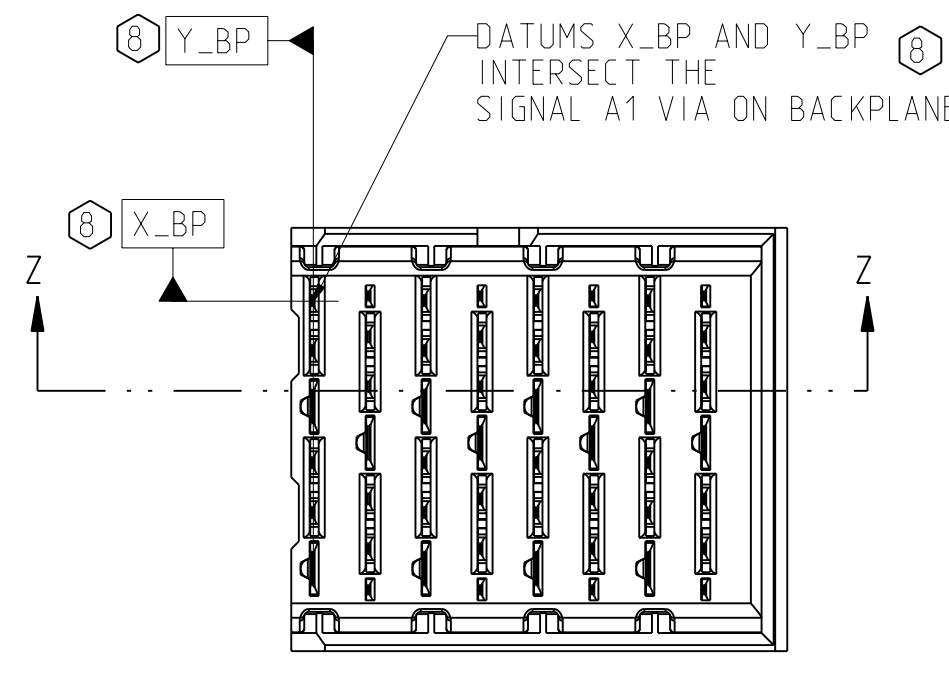
A

D

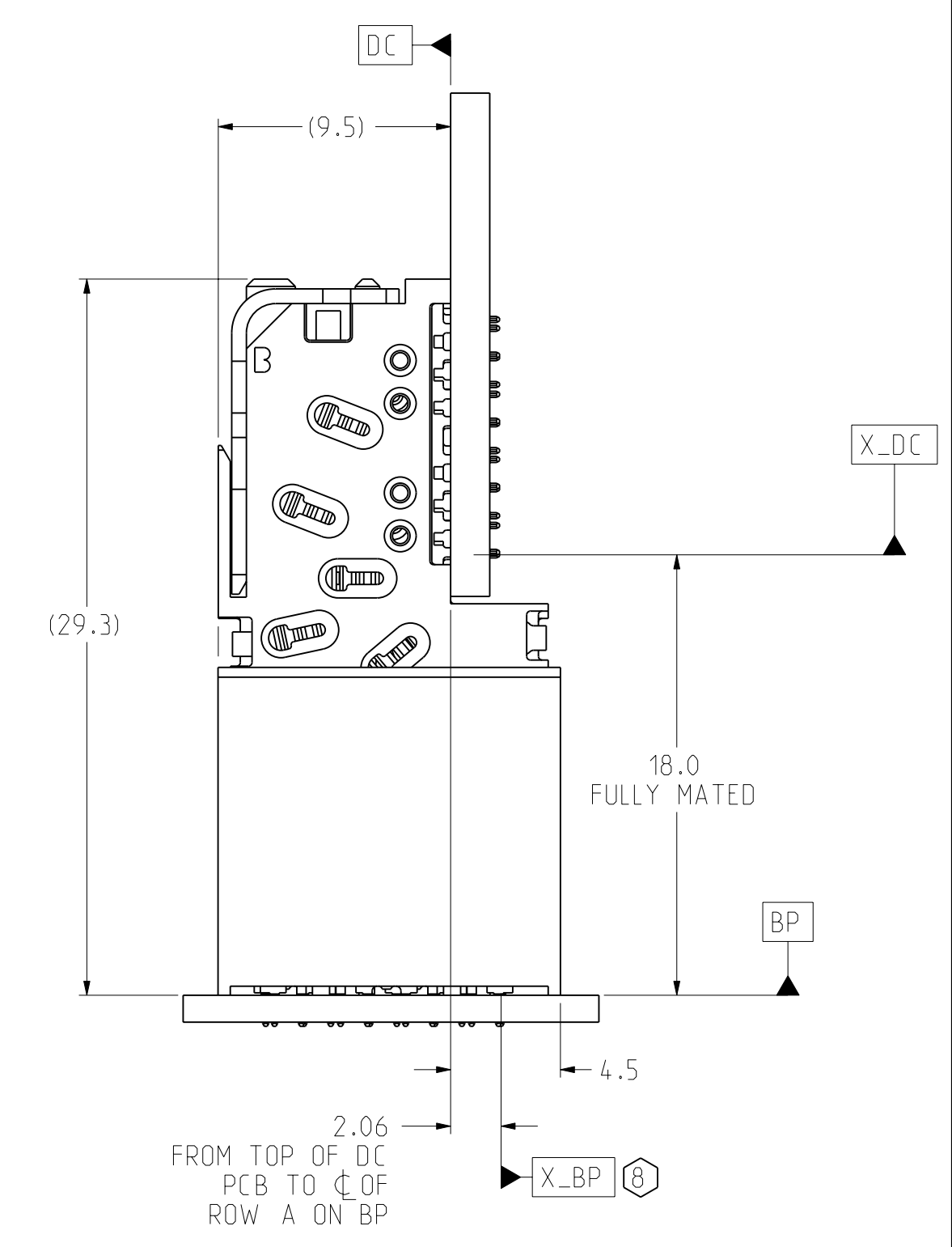
C

B

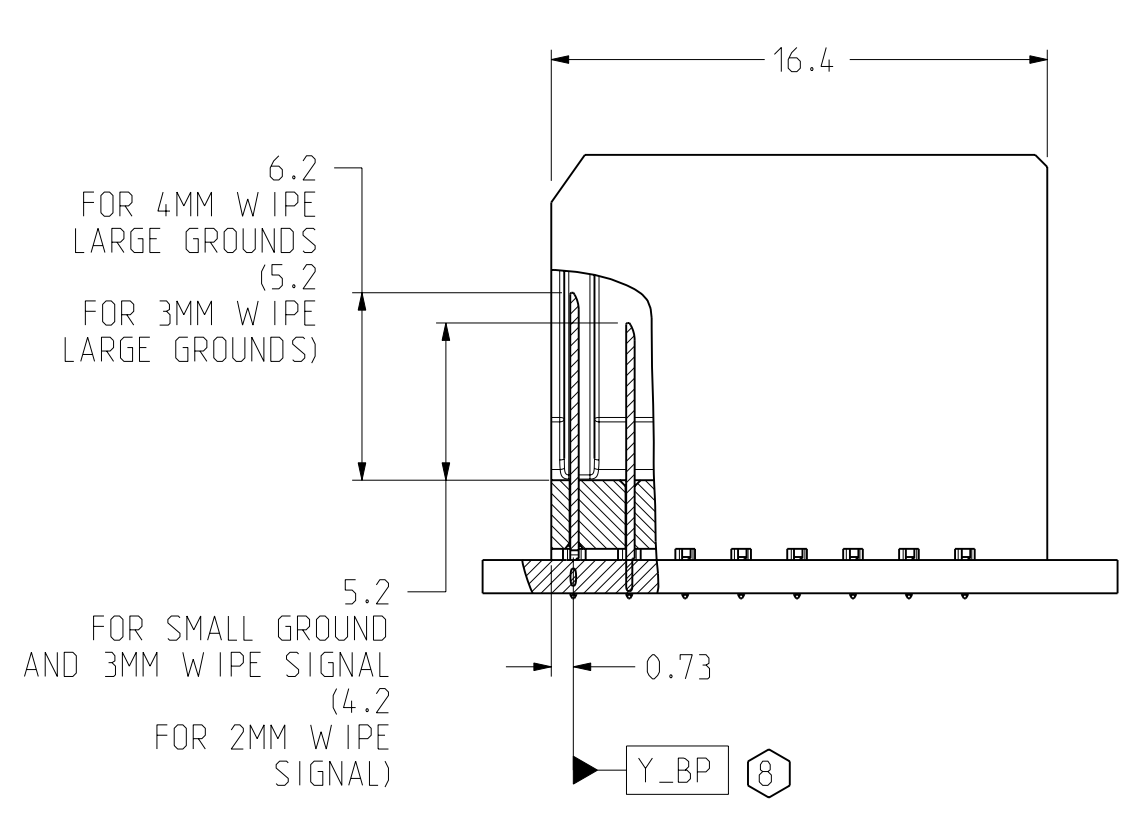
A



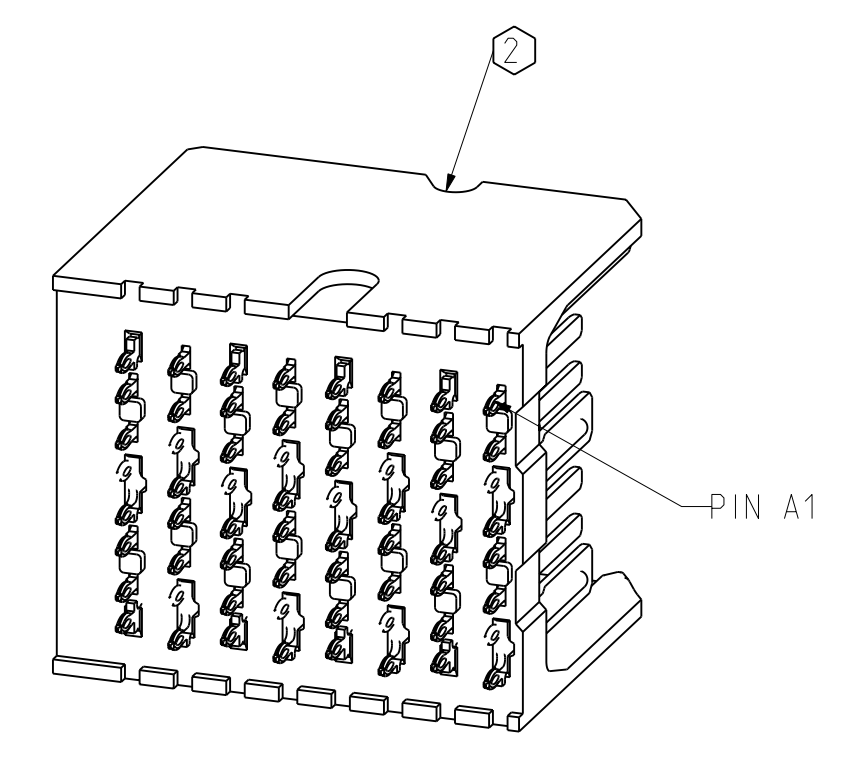
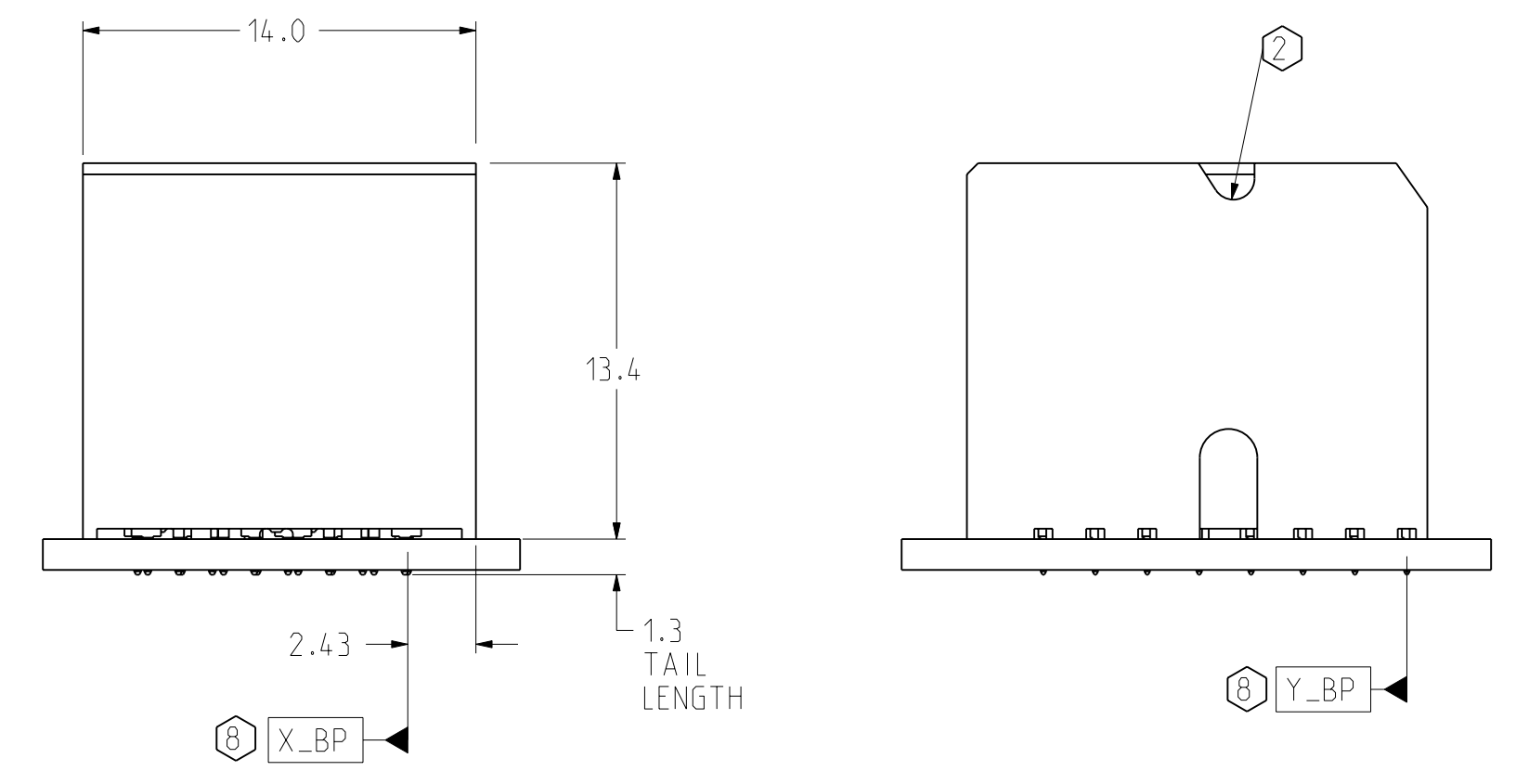
RIGHT WALL BACKPLANE MODULE DIMENSION



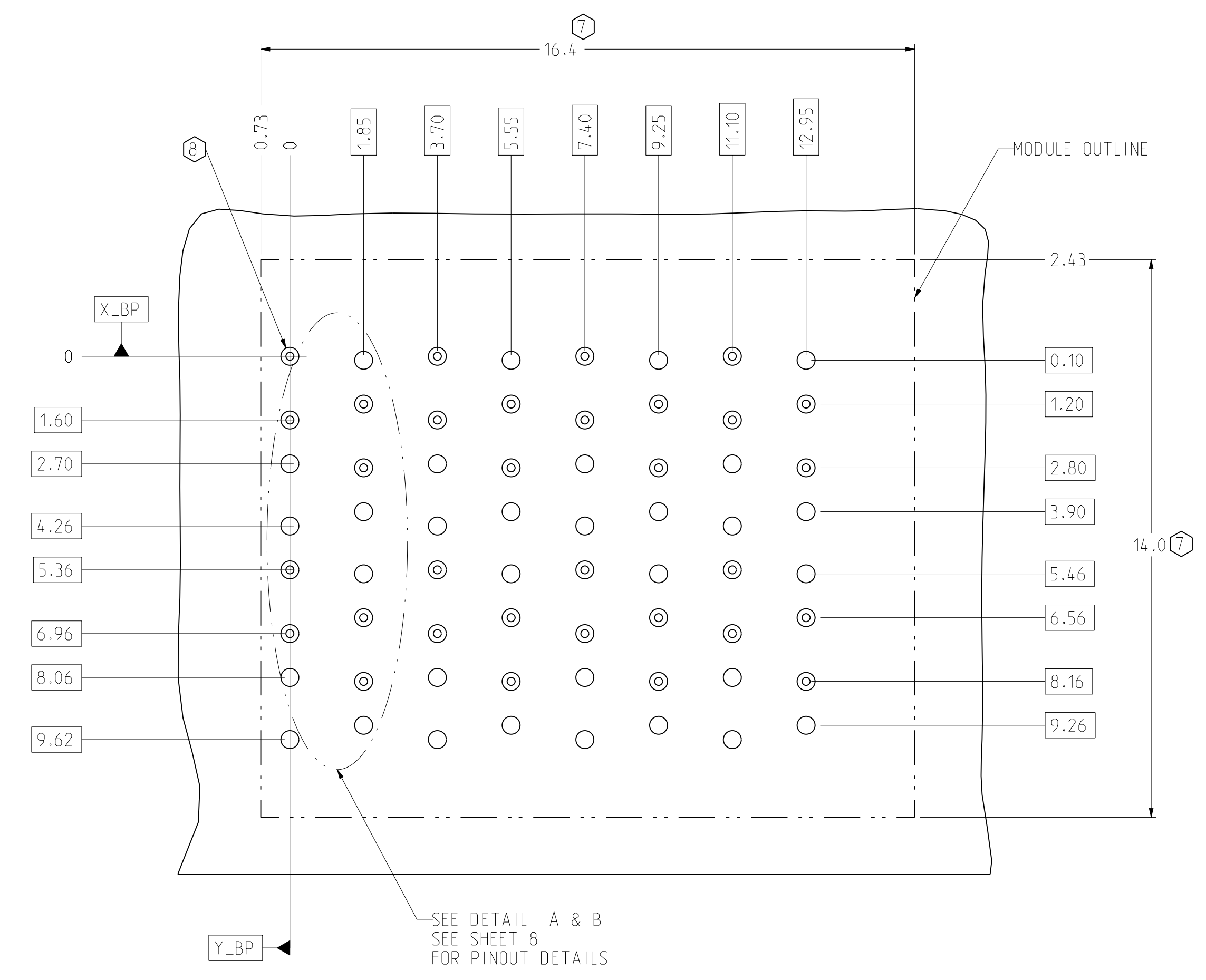
CONNECTOR REFERENCE SCALE 4/1



SECTION Z-Z



ISOMETRIC VIEW SCALE 4/1



BP HOLE PATTERN COMPONENT SIDE SCALE 10/1

RIGHT WALL BACKPLANE FOOTPRINT

| TOLERANCES | DESIGN | DATE |
|-------------|-----------|------------|
| 0.0 ±0.25 | LEIGHTON | 06/06/2007 |
| 0.00 ±0.13 | HCL-MH | 10/22/2009 |
| 0.000 ± - | A.ASTBURY | 10/22/2009 |
| ANGLES ± 3° | D.SMITH | 10/22/2009 |

Amphenol TCS
A Division of Amphenol Corporation
200 Innovative Way, Nashua, NH 03062 603.879.3000

TITLE BACKPLANE MODULES, VERTICAL MALE HEADER
XCede, 2 PAIR B POSITION

PART NO. SEE PN TREE SHEET 1

DRAWING NO. C951-200E-500

PROJ. TYPE: C951-2-BP2-BWF
PROJ. DRAWING: C951-200E-500-BP2-MODULES-BWAF

SIZE D SCALE 4/1 SHEET 6 OF 8

INTERPRET PER ASME Y14.5M
CODE IDENT 31413

CUSTOMER USE DRAWING

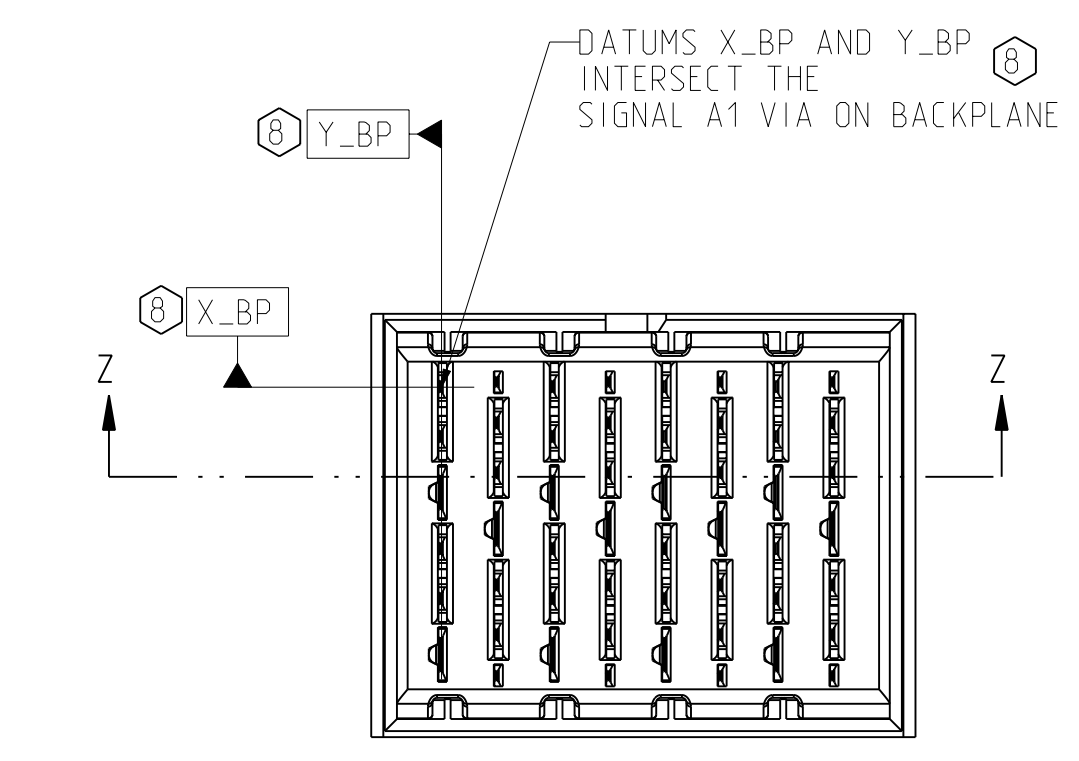
DRW NO. C951-200E-500

SH 6

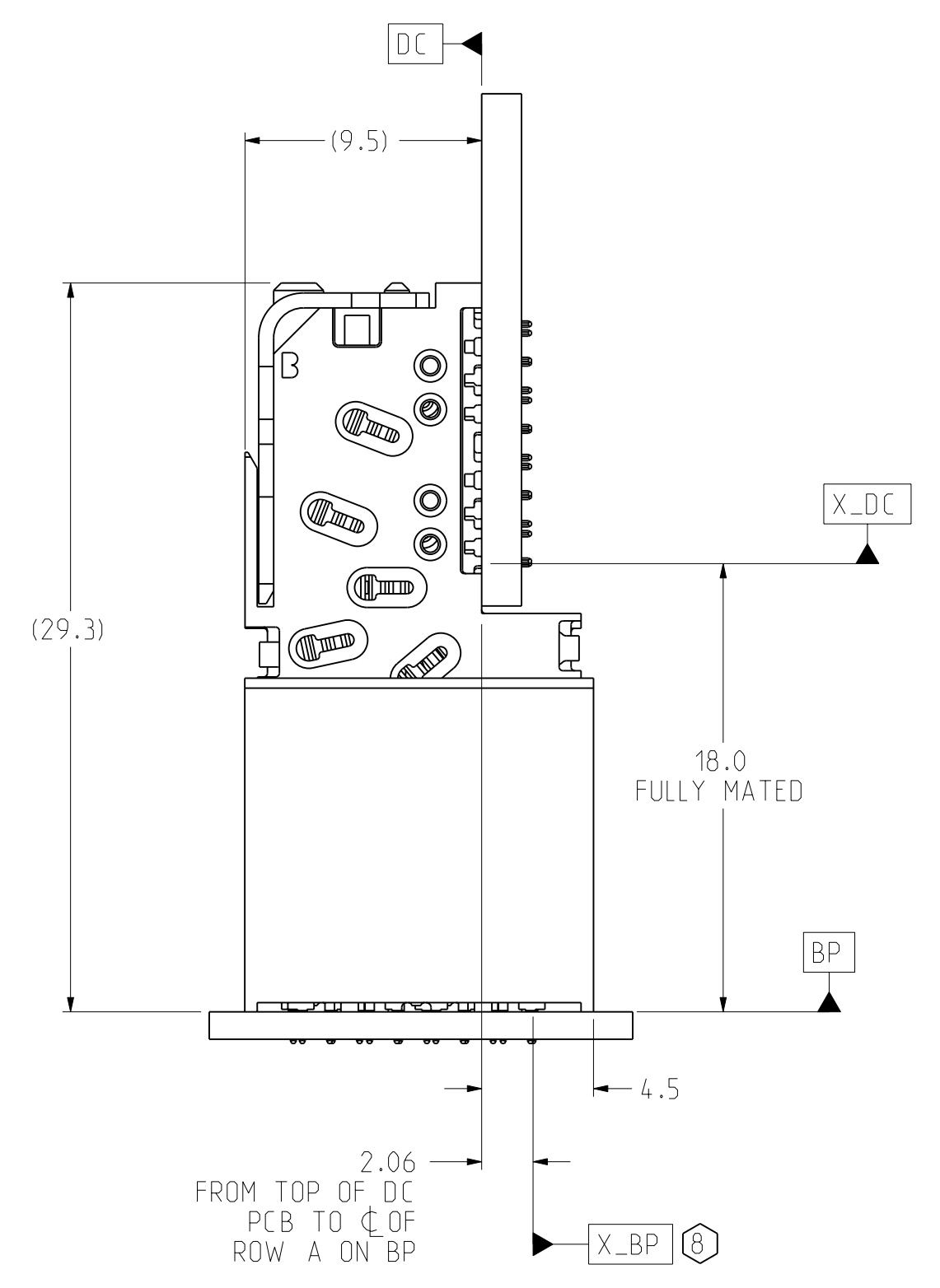
REV A

1.4
3.75

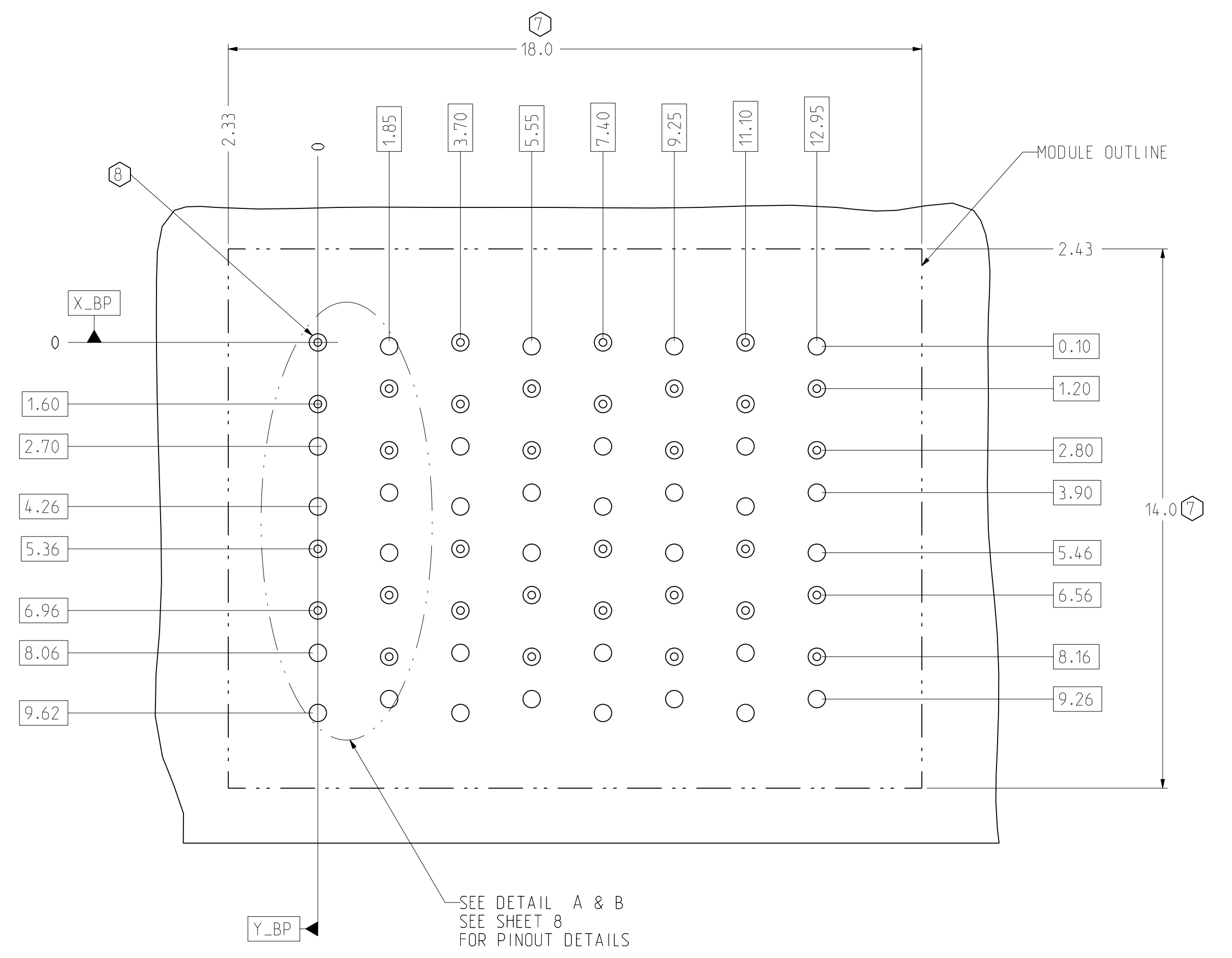
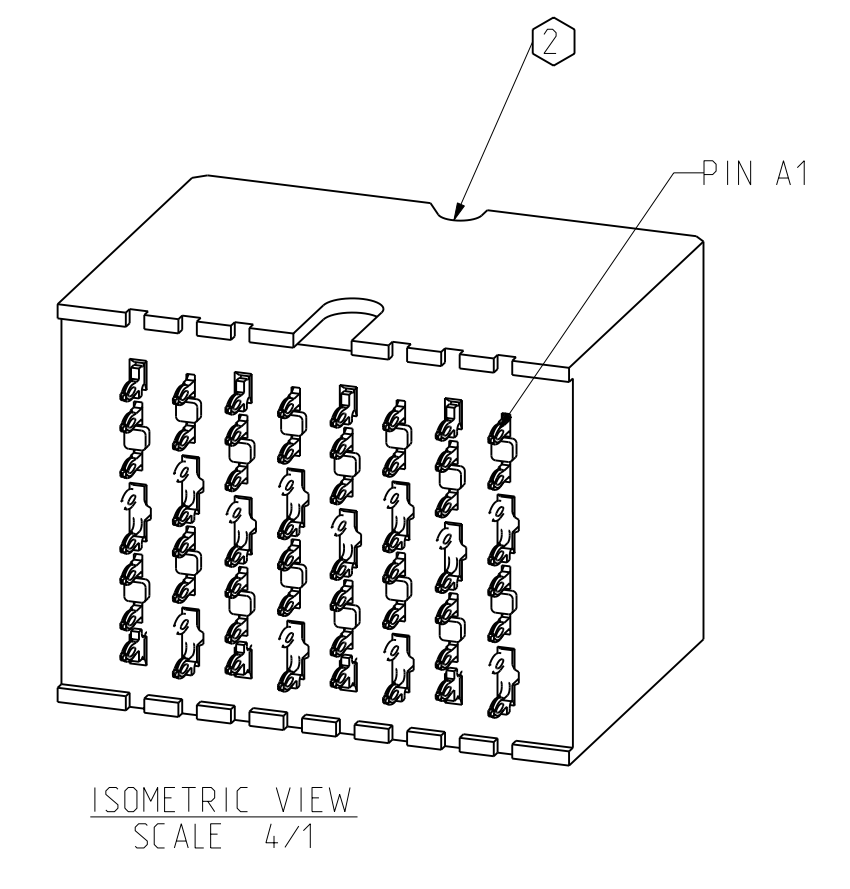
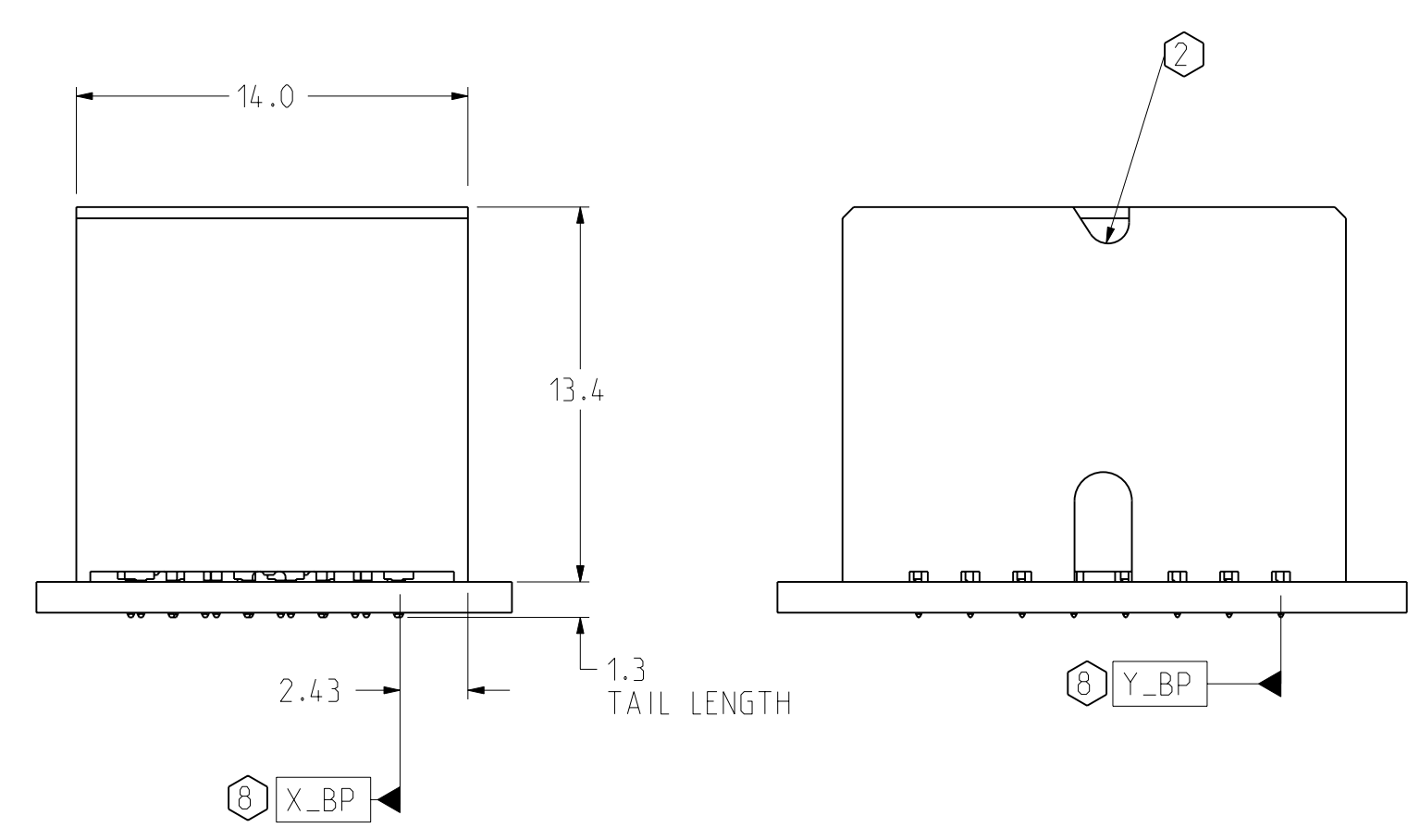
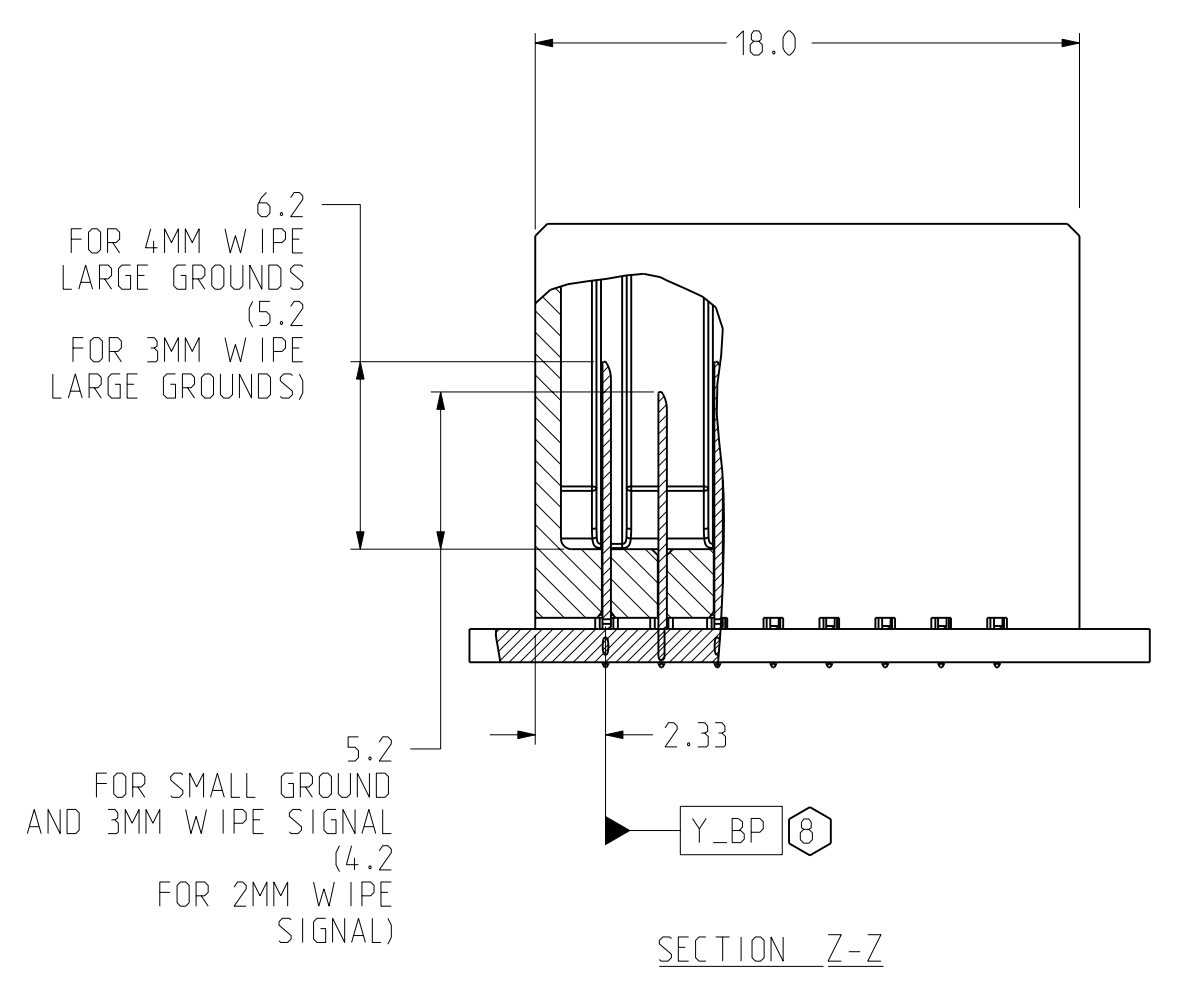
SHEET 6 OF 8



TWO WALL BACKPLANE MODULE DIMENSION



CONNECTOR REFERENCE SCALE 4/1

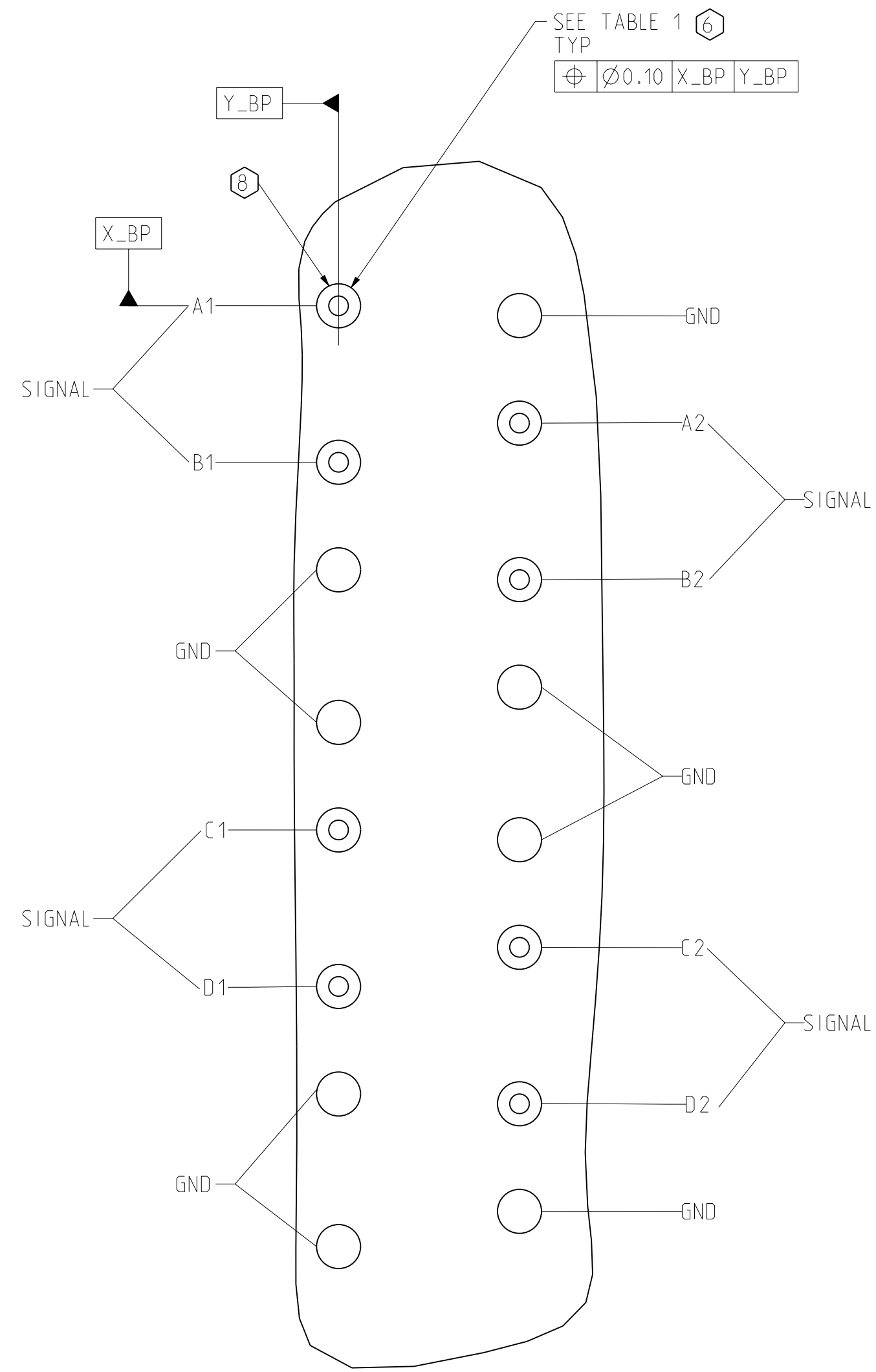


TWO WALL BACKPLANE FOOTPRINT

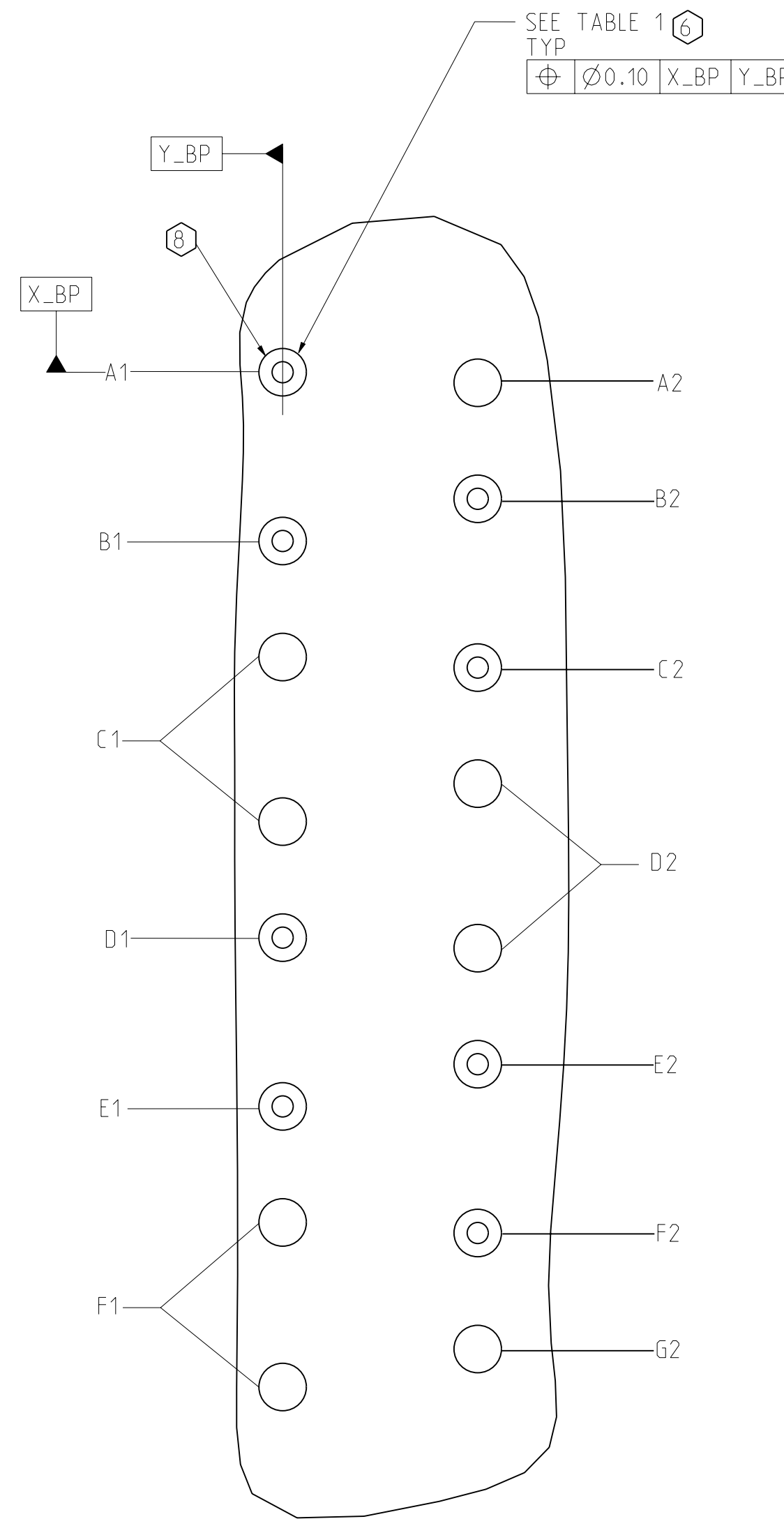
| | | | | |
|---|---------------|----------------------------|--|--|
| TOLERANCES | | DESIGN 06/06/2007 LEIGHTON | Amphenol TCS A Division of Amphenol Corporation 200 Innovative Way, Nashua, NH 03062 603.879.3000 | TITLE BACKPLANE MODULES, VERTICAL MALE HEADER Xcde: 2 PAIR B POSITION |
| 0.0 | ± 0.25 | DRAWN 10/22/2009 HCL-MH | | |
| 0.00 | ± 0.13 | CHK 10/22/2009 A.ASTBURY | | |
| 0.000 | \pm | APVD 10/22/2009 D.SMITH | | |
| ANGLES | $\pm 3^\circ$ | | | |
| UNLESS OTHERWISE SPECIFIED DIMENSIONS ARE IN MM. DECIMAL MARKER IS A PERIOD | | | PART NO. SEE PN TREE SHEET 1 | REV |
| INTERPRET PER ASME Y14.5M | | | DRAWING NO. C951-200E-500 | REV A |
| CODE IDENT 31413 | | | PROJ: C951-2-BP2-BWF | 1.4 |
| CUSTOMER USE DRAWING | | | PROJ: C951-200E-500-BP2-MODULES-BWAF | 3.15 |
| SIZE D | SCALE 4/1 | SHEET 7 OF 8 | | |

DRW NO. C951-200E-500

SH 7 REV A



DETAIL A
HSD PINOUTS
SCALE 20/1



DETAIL B
LC PINOUTS
SCALE 20/1

| TABLE 1 | | |
|---------|---|---|
| | COMPLIANT PIN DRILL $\varnothing 0.0217''$ | COMPLIANT PIN DRILL $\varnothing 0.0177''$ |
| PTH | $\varnothing 0.45 \pm 0.05$ | $\varnothing 0.35 \pm 0.05$ |
| DRILL | $\varnothing 0.55 [0.0217'']$ | $\varnothing 0.45 [0.0177'']$ |
| PAD | $\varnothing 0.85$ | $\varnothing 0.75$ |

| | | | | | | | | | |
|---|------------|---|--|--|--------------------------------|----------|-----|-------|--------|
| TOLERANCES | | DESIGN 06/06/2007 LEIGHTON | Amphenol TCS A Division of Amphenol Corporation 200 Innovative Way, Nashua, NH 03062 603.879.3000 | TITLE BACKPLANE MODULES, VERTICAL MALE HEADER XCede, 2 PAIR B POSITION | | | | | |
| 0.0 | ± 0.25 | DRAWN 10/22/2009 HCL-MH | | PART NO. | SEE PN TREE SHEET 1 | REV | | | |
| 0.00 | ± 0.13 | CHK 10/22/2009 A.ASTBURY | | DRAWING NO. | C951-200E-500 | REV A | | | |
| 0.000 | $\pm -$ | APVD 10/22/2009 D.SMITH | | PROJ. TYPE | C951-2-BP2-BWAF | 1.4 | | | |
| ANGLES $\pm 3^\circ$ | | UNLESS OTHERWISE SPECIFIED DIMENSIONS ARE IN MM. DECIMAL MARKER IS A PERIOD. | | PROJ. DRAWING | C951-200E-500-BP2-MODULES-BWAF | 3.75 | | | |
| INTERPRET PER ASME Y14.5M CODE IDENT 31413 | | CUSTOMER USE DRAWING | | SIZE | D | SCALE | 7/2 | SHEET | 8 OF 8 |

DRW NO. C951-200E-500

SH 8 REV A