

PRODUCT NUMBER BPS8B96YYD-CO---

WIRE ACCOMODATION		
PRODUCT NUMBER	WIRE SIZE	CONTACT IDENTIFICATION
BPS8B96YYDCO---	AWG28/30	0
BPS8B96YYD2CO---	AWG24/26	2

CONTACT PLATING			
PRODUCT NUMBER	PERFORMANCE LEVEL PER DIN41612	CONTACT AREA	IDC TERMINAL
BPS8B96YYD_COZ0	CLASSE 3	Au OVER Ni	SnPb
BPS8B96YYD_COZ1	CLASSE 2	Au OVER Ni	SnPb
BPS8B96YYD_COE9	CLASSE 1	Au OVER Ni	SnPb

PERFORMANCES CHARACTERISTICS

VOLTAGE RATING : 250 VAC (rms)
 CURRENT RATING : 1,5 A AT 25 °C, 1 A AT 70 °C.
 INSULATION RESISTANCE : 1000 MΩ INITIAL, 100 MΩ MIN. AFTER TEST
 DIELECTRIC WITH-
 STANDING VOLTAGE : 1000 VAC (rms).
 CONTACT RESISTANCE : 15 mΩ MAX. INITIAL, 5 mΩ MAX. RISE OF INITIAL VALUE AFTER TEST.
 OPERATING TEMPERATURE: -40 °C TO +125 °C.
 INSERTION FORCE : 1 N MAX./CONTACT.
 WITHDRAWAL FORCE : 0,2 N MIN./CONTACT.

*DEPENDING ON THE CABLE, THE MAX. TEMPERATURE CAN BE LOWER.
 FOR STANDARD PVC INSULATED CABLE : 105 °C MAX.

CONSTRUCTION

BODY MATERIAL : GLASS-REINFORCED THERMOPLASTIC (UL94V-0).
 COVER MATERIAL : POLYPHENYLENE (PPO), COLOUR : BLACK.
 CONTACT MATERIAL : PHOSPHOR BRONZE.
 CONTACT FINISH : Au OVER Ni IN CONTACT AREA, SnPb ON I.D.C. TERMINAL.
 Z0 : PERFORMANCE LEVEL PER DIN41612 CLASS 3
 Z1 : PERFORMANCE LEVEL PER DIN41612 CLASS 2
 E9 : PERFORMANCE LEVEL PER DIN41612 CLASS 1
 OTHERS : CONSULT FCI
 TIE-WRAP : OPTIONAL (PART N°. TF4)

PART NUMBERS

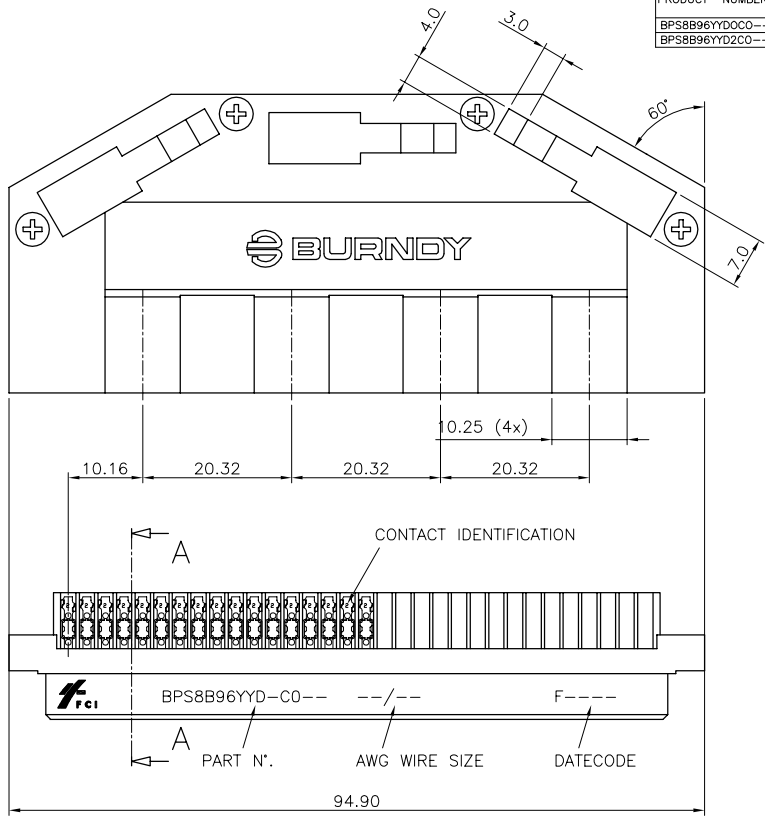
BPS8B96YYDCO--- CONNECTOR FOR WIRE SIZE AWG28, AWG30.
 (CONTACT IDENTIFICATION : 0).
 BPS8B96YYD2CO--- CONNECTOR FOR WIRE SIZE AWG24, AWG26
 (CONTACT IDENTIFICATION : 2).

AWG WIRE SIZE MARKING

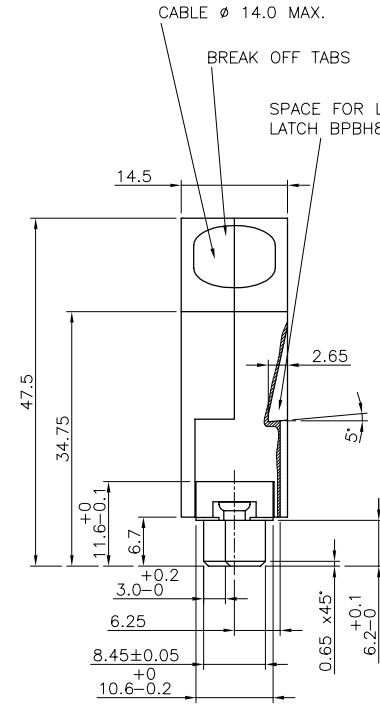
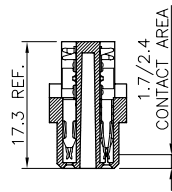
BPS8B96YYDCO--- : 28/30.
 BPS8B96YYD2CO--- : 24/26.

DATECODE MARKING

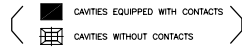
F + YEAR & WEEKCODE, EXAMPLE : F9950.



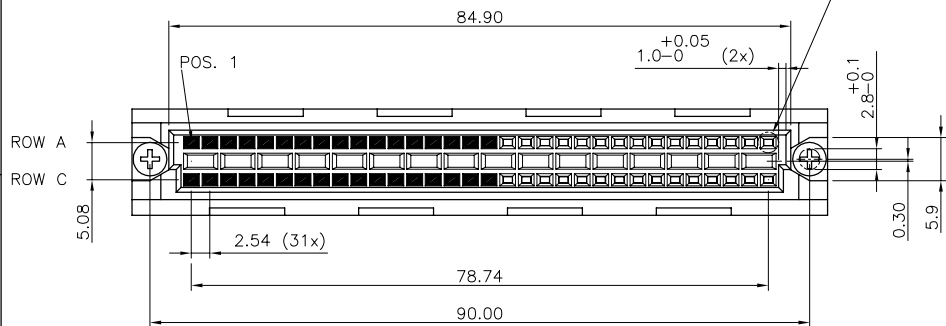
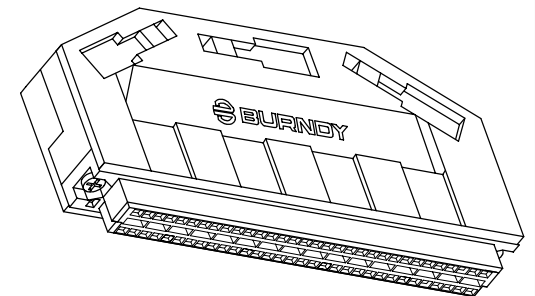
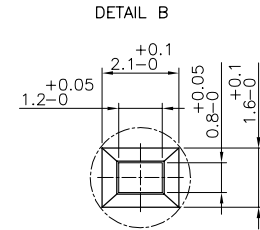
SECTION AA



CONTACT ARRANGEMENT



DETAIL B



mat'l. code				tolerances unless otherwise specified		CUSTOMER COPY		FCI ELECTRONICS	
ltr	ecn	no	dr	date	linear	projection	title	www.fciconnect.com	
A	F00819	DLE	00.10.23		0.1 ±0.2	projection	ASSY BPS8		
					0.01 ±0.1	mm	96 POS A,C LOADED SPECIAL		
					angles ±1°	scale	product family BPS8	code 213	
					dr D LEGRAND 00.10.23	2:1	size dwg no	sheet 1 of 1	
					eng JF NOTTEAU 00.10.23		55363		
					chr				
					app JF-N 00.10.23				
sheet index	revision	A	sheet	1					