

**PACKAGE:** SOT-23

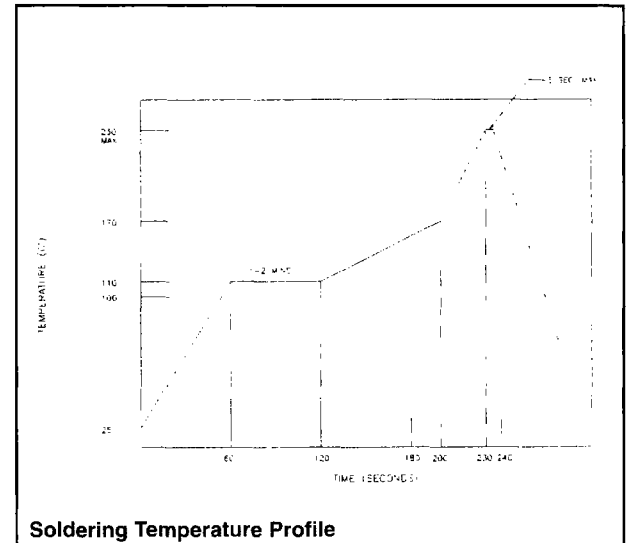
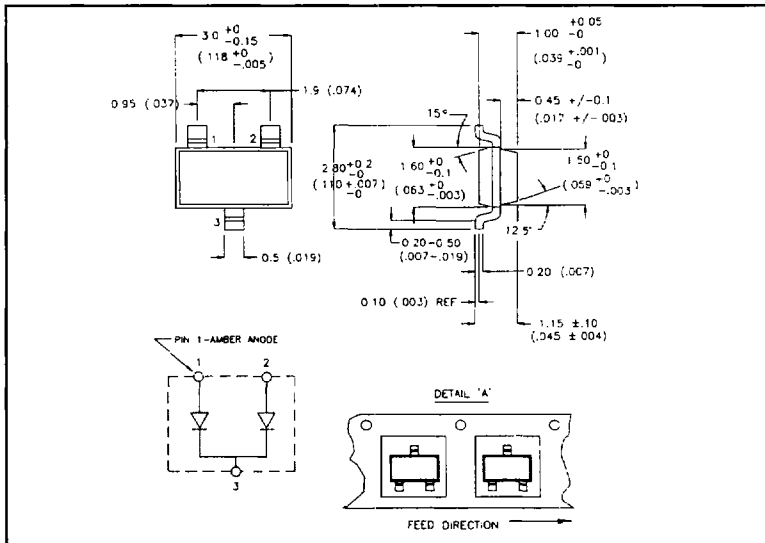
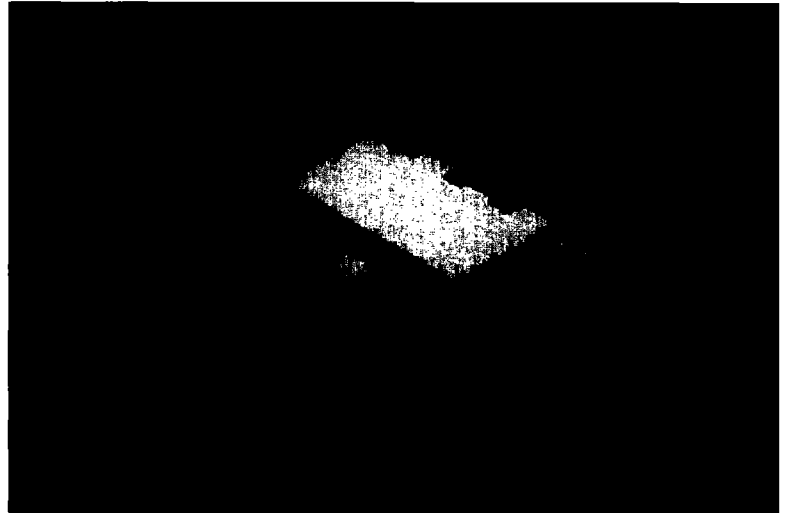
**CONSTRUCTION:** Epoxy Lens Molded on Lead Frame

**FEATURES**

- Standard SOT-23 package
- Low cost construction
- Frame handles multiple chips
- Choice of colors, bi-color

**APPLICATIONS**

- PCB fault/status indicator
- Data pad, graphics backlighting
- LCD backlighting



**PRODUCT SELECTION AND OPTO/ELECTRONIC SPECIFICATIONS (@25°C)**

LUMEX PART NUMBER	Emitted Color	λ Pk nm	Lens Color	On Axis Iv mCD @ 20 mA	Vf @ 20 mA Typ Max	Emission Angle 2θ	Pieces per Reel
SSL-LY15VOC-PP-TR	Yellow	585	Clear	5	2.0 2.4	180°	2000