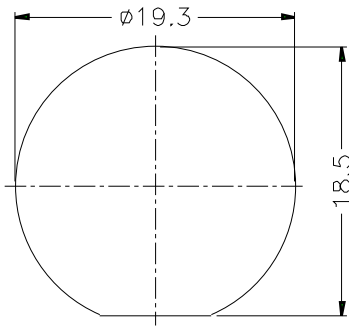
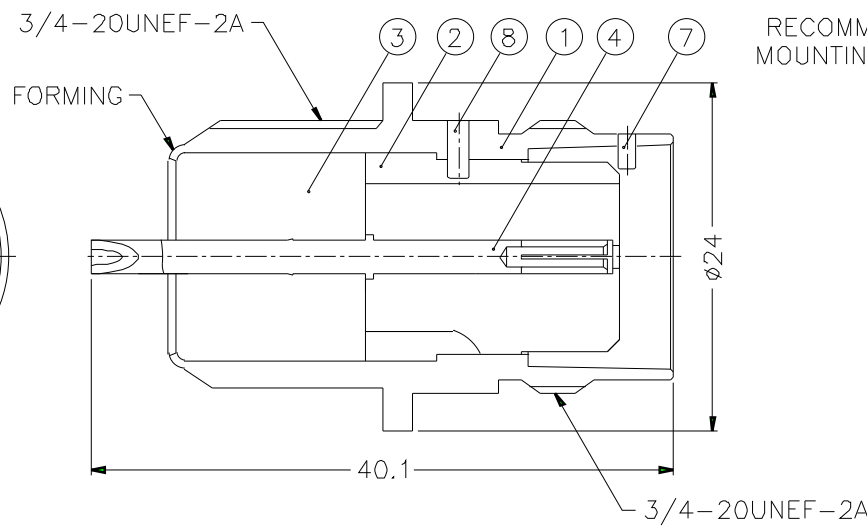
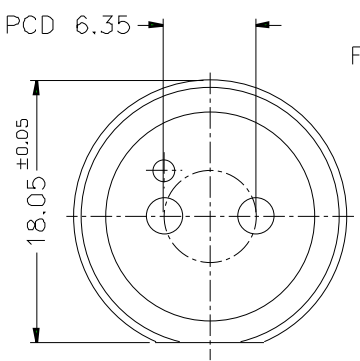
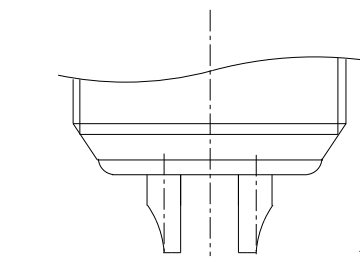
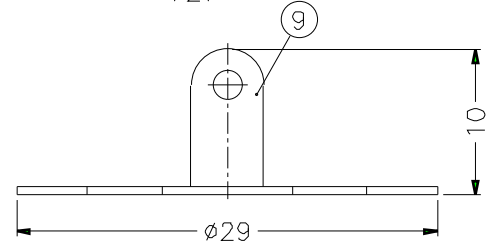
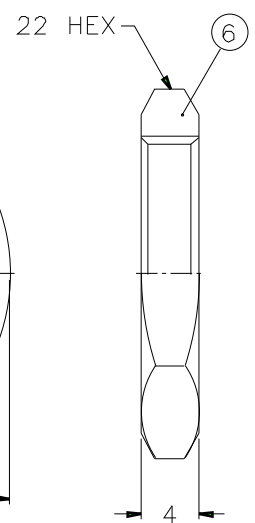
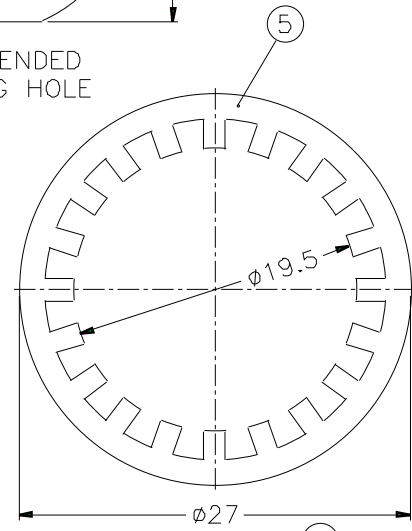


ISS		ZONE		REVISIONS		DESCRIPTION\PER REQUEST\DATE	

F
E
D
C
B
A



RECOMMENDED MOUNTING HOLE



NOTES: FINISH (PLATING THICKNESS IN MICRO-INCHES)
 1. BRASS PER QQ-B-626
 2. BRASS PER QQ-B-613
 3. NICKEL PL. 100 MIN. THICK OVER COPPER STRIKE
 4. PHOSPHOR BRONZE PER QQ-B-750
 5. GOLD PL. 3 MIN. THICK OVER NICKEL PL. 100 MIN. THICK OVER COPPER STRIKE

NO.	DESCRIPTION	MATERIAL	FINISH	Q'TY	DRAWING NO.
9	SOLDER TAG			1	TW7630-10
8	PIN			1	TW7630-9-B
7	PIN			1	TW7630-8
6	HEX NUT			1	HN22-3/4-20X4
5	LOCK WASHER			1	LW-27/195X06
4	CONTACT PIN			2	TWX6351B1-4
3	INSULATOR	PBT	WHITE	1	TW7630-3
2	INSULATOR	PBT	WHITE	1	TWX6351B1-2
1	BODY			1	TW7630-1

DIMENSIONS ARE IN MILLIMETERS
 UNLESS OTHERWISE SPECIFIED TOLERANCES
 0.5-6 = ±0.2
 6-30 = ±0.4
 30-120 = ±0.6
 120-315 = ±1
 315-1000 = ±1.6
 1000-2000 = ±2.4

PART NO.	TWX6351B1-NPB3G-95	
APPROVED	DATE	10-11-01'
CHECKED	DATE	10-11-01'
DRAWN	DATE	10-11-01'
FILE NO.		

Amphenol	
TITLE TWINAXIAL BULKHEAD RECEPT. JACK	
DRAWING NO. KJ-TWX6351B1-NPB3G-95	
ITEM NO.	

NO.	DESCRIPTION	MATERIAL	FINISH	Q'TY	DRAWING NO.	SCALE	2/1	ISSUE	A	FILE NO.

F
E
D
C
B
A