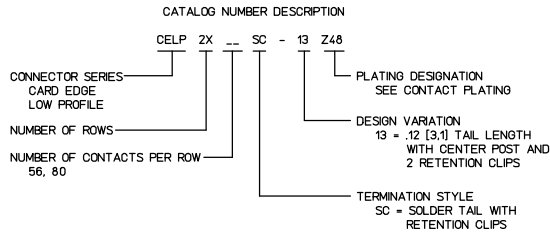


TABLE 1 - DIMENSIONS							
CATALOG NO	CONTACTS PER ROW	TOTAL NO CONTACTS	NO. OF CONTACT PAIRS		D	E	G ^{.008} _{.020}
			BAY A	BAY B			
CELP2X56SC-13Z48	56	112	11	45	$\frac{585}{14.86}$	$\frac{2\ 285}{58.04}$	$\frac{3.140}{79.76}$
CELP2X80SC-13Z48	80	160	38	42	$\frac{1.935}{49.15}$	$\frac{2.195}{54.23}$	$\frac{4.340}{110.24}$



- NOTES: UNLESS OTHERWISE SPECIFIED:
- INTERPRET THIS DRAWING IN ACCORDANCE WITH ANSI Y14.5M-1982.
 - SEE SHEET 2 FOR RECOMMENDED MATING DAUGHTERBOARD CARD EDGE LAYOUTS AND MOTHERBOARD FOOTPRINTS.

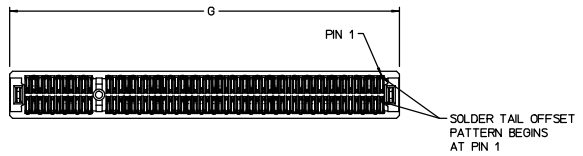
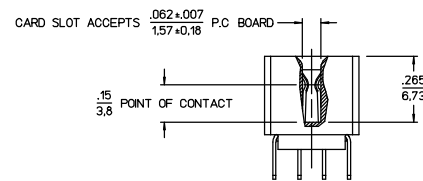
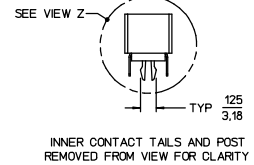
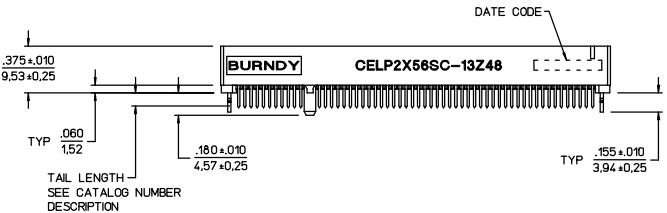
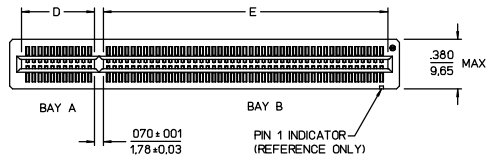
- 3 > COMPONENT BOARD MATERIAL:
- P.C. BOARD: FR-4 WITH 1 OZ. [28.35g] MIN COPPER PADS.
- PAD PLATING: 30 MICRONS [0.76 MICRONS] MIN. GOLD. (STANDARD) PER MIL-G-45204, TYPE 1, CLASS 1, GRADE C, OVER 100 MICRONS [2.54 MICRONS] MIN NICKEL PER QQ-N-290.
- PAD PLATING: 10 MICRONS [0.25 MICRONS] MIN. GOLD. PER (ALTERNATE) MIL-G-45204, TYPE 1, CLASS 1, EXCEPT .00001 THICK. GRADE C, OVER 150 MICRONS [3.81 MICRONS] MIN NICKEL PER QQ-N-290.
- RECOMMENDED FOR CACHE MEMORY MODULE - BATTELLE CLASS I ENVIRONMENT ONLY WITH 5 CYCLES MAX. DURABILITY (INSERTION/WITHDRAWAL).

- 4 > CONNECTOR ALSO ACCEPTS 20° LEAD-IN AND BLUNT CARD EDGE BOARDS - MATING FORCE MAY VARY.

- MATERIAL:
- BODY: HIGH TEMPERATURE THERMOPLASTIC, UL 94V-0.
- CONTACTS: COPPER ALLOY
- RETENTION CLIPS: STEEL ALLOY

- CONTACT PLATING: GOLD FLASH OVER 25 MICRONS [0.64 MICRONS] PALLADIUM-NICKEL OVER 50 MICRONS [1.27 MICRONS] NICKEL UNDERPLATE IN CRITICAL CONTACT AREA AND 75 MICRONS [1.91 MICRONS] SOLDER OVER NICKEL UNDERPLATE ON SOLDER TAILS.

- PERFORMANCE CHARACTERISTICS:
- CONTACT RESISTANCE: 30 MILLIOHMS MAXIMUM INITIAL, 10 MILLIOHMS MAXIMUM INCREASE THROUGH TESTING.
- CURRENT RATING: 0.5 AMPERE PER CONTACT.
- CONTACT NORMAL FORCE: 2.12 OZ. [60 GRAMS] MINIMUM END OF LIFE.
- DURABILITY: 50 CYCLES AS PER MIL-C-21097 WITH STANDARD DAUGHTERCARD PAD PLATING. (SEE ALTERNATE PAD PLATING ABOVE)
- INSULATION RESISTANCE: 1000 MEGOHMS MINIMUM
- OPERATING TEMPERATURE: -13°F [-25°C] TO 185°F [85°C].
- CONNECTORS PENDING UL RECOGNITION UNDER FILE E3151.



CATALOG NUMBER CELP2X56SC-13Z48 SHOWN

VIEW Z
POSTS AND RETENTION CLIPS
REMOVED FROM VIEW FOR CLARITY
SCALE 4:1

REV	REVISION DESCRIPTION	BY	CHKD	DATE
F	CHANGED CURRENT RATING FROM 1.0 AMP TO 0.5 AMP PER CONTACT PER (ECN V92909)	TAB	CWK	08-31-99
4	SH 2: REMOVED POST AND ADDED CLIP SH 2 & 3 CAT NO. CELP2X25SC-3248 WAS CELP2X25SC-23248. SEE REV REF PRINT (ECN3430)	JKK	SMM	01-24-96
3	ADDED CAT NO. CELP2X56SC-23248 TO SH 2 AND SH 3 SEE REV REF PRINT (ECN3364)	JKK	PEP	08-25-95
2	SH 1: ADD ALT PAD PLTG & ALT DURABILITY SH 2: ADDED SH 3: (WAS SH 2): 2X11, 2X30 MBO & D'CD LAYOUTS ADDED. (ECN 3296)	PEP	JW	05-16-95
1	SH 1: SEE REV REF PRINT. SH 2: NO CHANGE. (ECN 2414)	DLB	RPS	12-15-93

REF DWG: SE95352
SUPERSEDES SKME28135-A
SUPERSEDES SKME30065

LOW PROFILE CARD EDGE CONNECTOR (2 BAY - SPECIAL)
CAT NO. CELP2X_ _SC-13Z48 (SEE TABLE 1)

LINEAR MEASURE:	INCH	MM	INCH (mm)
NO. OF DECIMAL PLACES IN INCHES:			
ONE PLACE	±.1	(±3)	
TWO PLACES	±.02	(±0.5)	
THREE PLACES	±.005	(±0.13)	

NO.	DATE	BY	CHKD	DATE
A	07-14-93	DRWIN	GJD	07-14-93
P	07-14-93	CHKD	GJD	07-14-93
R	07-14-93	DSGN	MY	07-14-93
O	07-14-93	MKT	BM	07-14-93
L	07-14-93	DC	JY	07-14-93
DRAWING SCALE 2.1				
DRAWING NO. BRSE95587				
REV F				

FRAMATOME CONNECTORS USA INC. 1995

BURNDY

FCI

FRAMATOME CONNECTORS INTERNATIONAL

TABLE 1 - DIMENSIONS							
CATALOG NO	CONTACTS PER ROW	TOTAL NO. CONTACTS	NO. OF CONTACT PAIRS		D	E	G $\pm .008$ ± 0.20
			BAY A	BAY B			
CELP2X11SC-3Z48	11	22	5	6	.285 7.24	.335 8.51	.890 22.61
CELP2X25SC-3Z48	25	50	11	14	.585 14.86	.735 18.67	1.590 40.39
CELP2X30SC-3Z48	30	60	11	19	.585 14.86	.985 25.02	1.840 46.74

NOTES: SEE SHEET 1

CATALOG NUMBER DESCRIPTION

CELP 2X -- SC -- Z48

CONNECTOR SERIES
CARD EDGE
LOW PROFILE

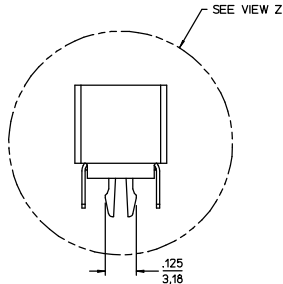
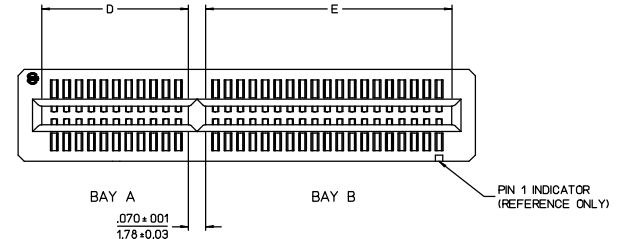
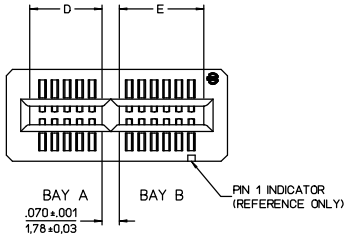
NUMBER OF ROWS

NUMBER OF CONTACTS PER ROW
11, 25, 30

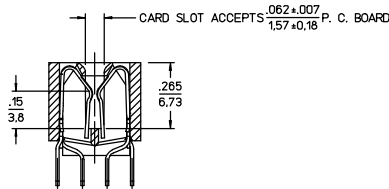
PLATING DESIGNATION
SEE CONTACT PLATING

DESIGN VARIATION
-3 = .12 [3.1] TAIL
LENGTH WITH TWO
RETENTION CLIPS

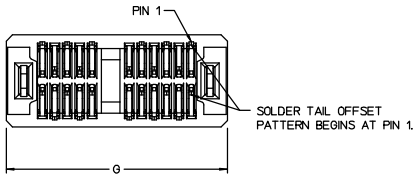
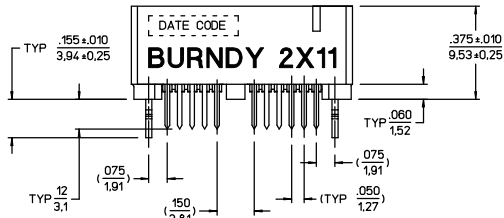
TERMINATION STYLE
SC = SOLDER TAIL WITH
RETENTION CLIPS



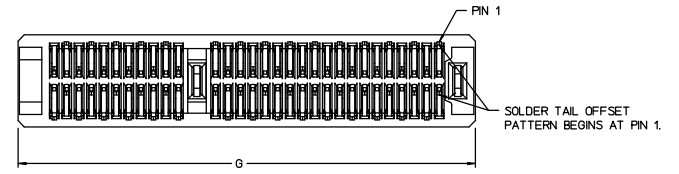
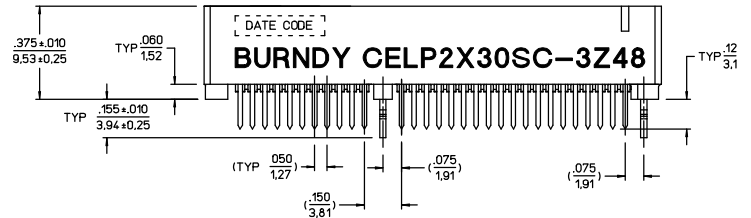
INNER CONTACTS REMOVED
FROM VIEW FOR CLARITY



VIEW Z
RETENTION DEVICES REMOVED
FOR CLARITY
SCALE 4:1



CATALOG NUMBER CELP2X11SC-3Z48 SHOWN



CATALOG NUMBER CELP2X30SC-3Z48 SHOWN

REV	ALL REVISIONS RECORDED ON SHEET 1	REVISION DESCRIPTION	BY	CHKD	DATE
-	-	-	-	-	-

LOW PROFILE CARD EDGE CONNECTOR ASSEMBLY (2 BAY - SPECIAL)

CAT NO. CELP2X_SC_Z48 (SEE TABLE)

DWG RELEASED TO CENTRAL FILE 05-18-95

CUST: APPLE ECN 3296 PC 807

© FRAMATOME CONNECTORS USA INC. 1995

DRWN PEP 04-13-95

CHKD JW 05-18-95

DSGN PEP 04-13-95

MKT RF 04-13-95

QC DC 04-13-95

DRAWING SCALE 4 : 1

DRAWING NO. REV

BRSE95587 F

SHEET 2 OF 3

LINEAR MEASURE:	INCH	INCH (mm)
THIRD ANGLE PROJECTION		
- TOLERANCES -		
UNLESS OTHERWISE SPECIFIED		
NO. OF DECIMAL PLACES IN INCHES	INCH (mm)	
ONE PLACE	±.1 (.3)	
TWO PLACES	±.02 (.05)	
THREE PLACES	±.005 (.013)	
ANGLES ±°		



NOTES: SEE SHEET 1

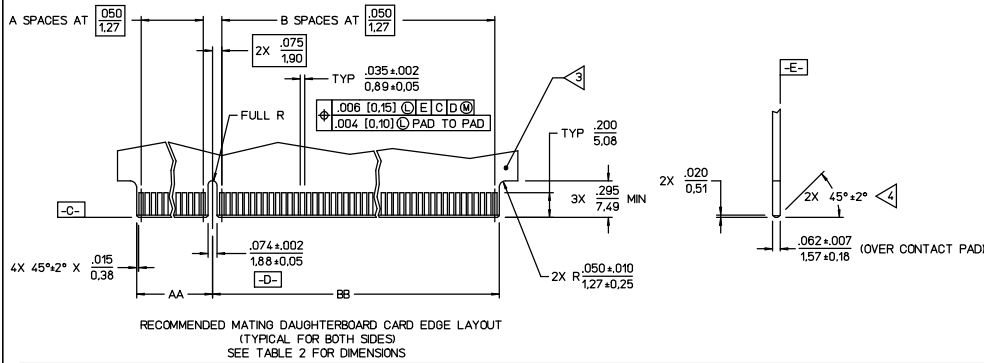
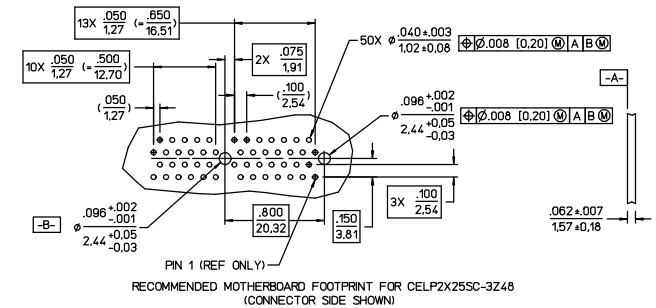
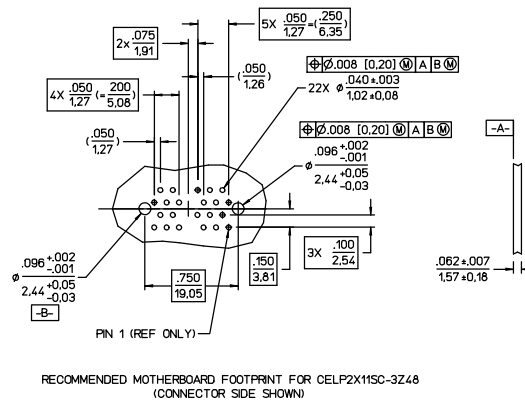
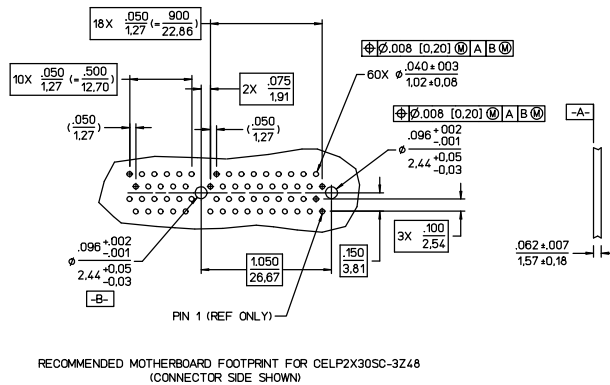
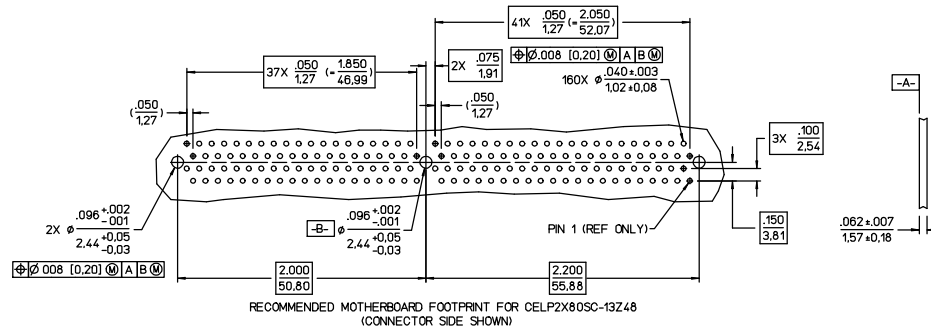
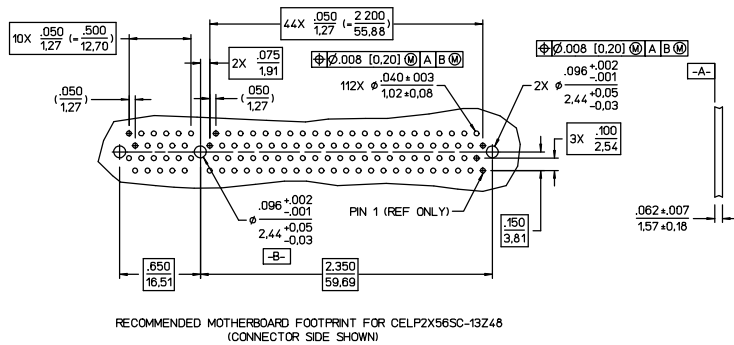


TABLE 2 - CARD EDGE DIMENSIONS				
CATALOG NUMBER	A	B	AA	BB
CELP2X11SC-3Z48	4	5	.310 7.87	.360 25.51
CELP2X25SC-3Z48	10	13	.610 15.49	.810 20.57
CELP2X30SC-3Z48	10	18	.610 15.49	1.010 25.65
CELP2X56SC-13Z48	10	44	.610 15.49	2.310 58.67
CELP2X80SC-13Z48	37	41	1.960 49.78	2.160 54.86



REV	ALL REVISIONS RECORDED ON SHEET 1	REVISION DESCRIPTION	BY	CHKD	DATE

RECOMMENDED DAUGHTER / MOTHERBOARD LAYOUTS
CAT NO. CELP2X__SC__Z48

DWG RELEASED TO CENTRAL FILE 07-16-93
CAGE NO. 09922 DON 809 PC 807

FRAMATOME CONNECTORS USA INC. 1995

IBURNDY
FCI
FRAMATOME CONNECTORS INTERNATIONAL

NO. OF DECIMAL PLACES IN INCHES	INCH (mm)
ONE PLACE	±.1 (.3)
TWO PLACES	±.02 (.5)
THREE PLACES	±.005 (.13)

ANGLES ±°

DRAWING NO.	REV
BRSE95587	F

SHEET 3 OF 3