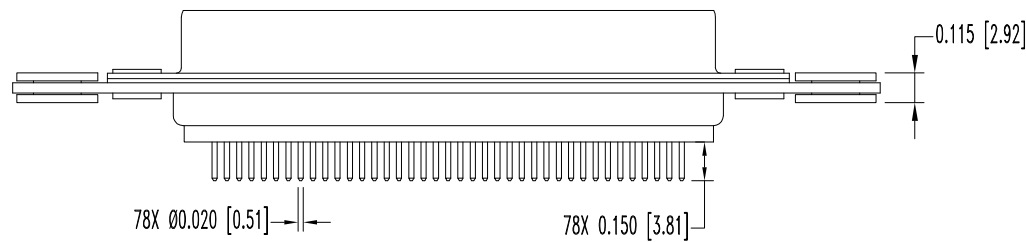
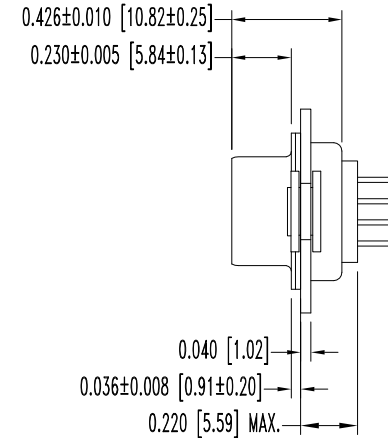
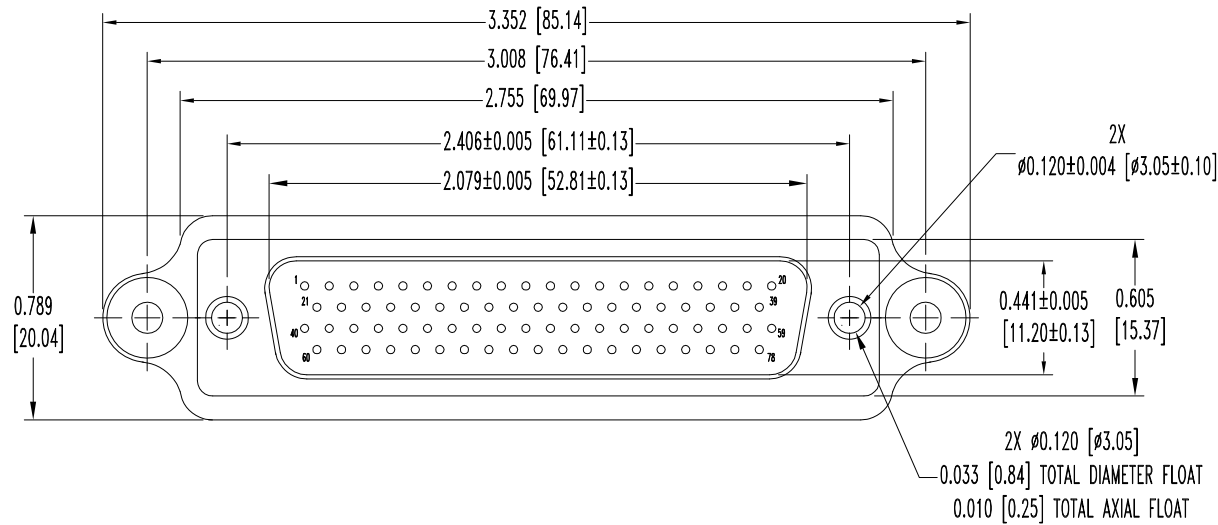


THIS DRAWING CONTAINS INFORMATION PROPRIETARY TO POSITRONIC AND ITS SUBSIDIARIES. POSITRONIC BELIEVES THE DATA ON THIS DRAWING TO BE RELIABLE, SINCE THE TECHNICAL INFORMATION IS GIVEN FREE OF CHARGE, THE USER EMPLOYS SUCH INFORMATION AT HIS OWN DISCRETION AND RISK. POSITRONIC ASSUMES NO RESPONSIBILITY FOR RESULTS OBTAINED OR DAMAGES INCURRED FROM USE OF SUCH INFORMATION IN WHOLE OR IN PART.

DATE	REV	REVISION RECORD	APP	DR	CK
7-15-09	NC	ECO 31314	RCW	BS	COLE

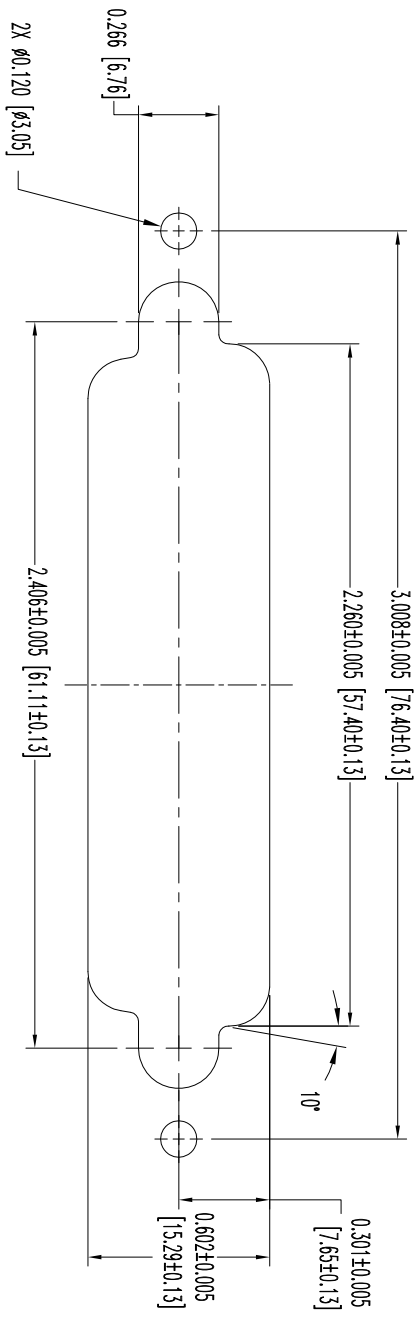


NOTES:

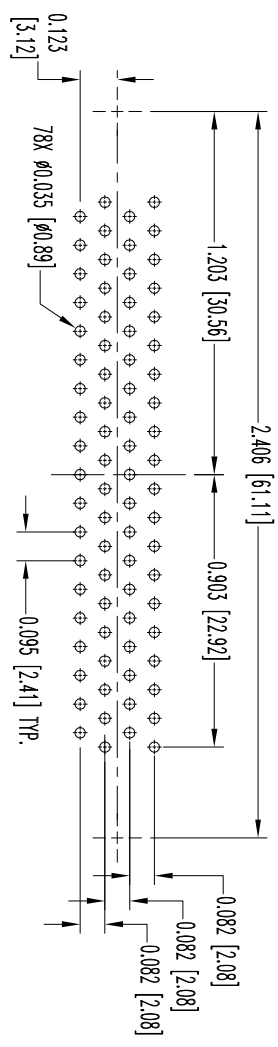
- MATERIALS AND FINISHES:  
 INSULATOR: GLASS FILLED POLYESTER PER MIL-M-24519, UL 94V-0, COLOR: BLACK.  
 CONTACTS: PRECISION MACHINED COPPER ALLOY, GOLD FLASH OVER NICKEL PLATE.  
 SHELLS: STEEL, ZINC PLATE WITH CHROMATE SEAL.  
 MOUNTING PLATE: ALUMINUM, YELLOW ANODIZE.
- ELECTRICAL CHARACTERISTICS:  
 CONTACT CURRENT RATING: 5 AMPERES NOMINAL.  
 INITIAL CONTACT RESISTANCE: 0.010 OHMS MAX.  
 INSULATOR RESISTANCE: 5 G OHMS.  
 WORKING VOLTAGE: 300 V r.m.s.
- TEMPERATURE RANGE: -55°C TO +125°C.
- MOS 759.1 ALLOWS FOR MOUNTING PLATE TO BE INSTALLED.
- DIMENSIONS ARE IN INCHES [MILLIMETERS].

	<b>POSITRONIC INDUSTRIES INC.</b> www.connectpositronic.com		FSCM 28198
	DECIMAL TOL. ± 0.015 [0.38]	TITLE ODD78M30000-759.1	SCALE N.T.S.
ANGULAR TOL. ± 5°	DATE 7-15-09	DRAWING NUMBER SK10919	REV. 1 OF 2 NC

POSTRAC INDUSTRIES BELIEVES THE DATA ON THIS DRAWING TO BE RELIABLE SINCE THE TECHNICAL INFORMATION IS GIVEN FREE OF CHARGE, THE USER ASSUMES ALL RESPONSIBILITY FOR THE RESULTS OBTAINED FROM USE OF SUCH INFORMATION IN WHOLE OR IN PART.



PANEL CUT-OUT



CONTACT HOLE PATTERN