

## FEATURES AND SPECIFICATIONS

### Features and Benefits

- 6 to 72 circuits
- Holds wires for secure, reliable contact
- Modular construction reduces inventory
- High flammability rating

### Reference Information

UL: File No. E48521  
 Guide No. XCFR2  
 CSA: File No. 025562



**5.0mm (.197") Pitch  
 Beau Eurostyle®  
 Low Profile, Three Level  
 Terminal Block**

### Electrical

Voltage: 300V  
 Maximum Current: 13.5 Amp  
 Insulation Resistance: >5,000 Megaohms

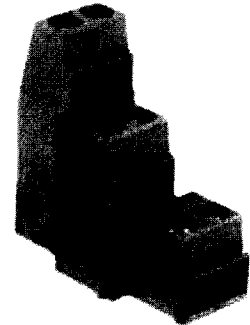
### Mechanical

Rec. Tightening Torque: 5 in. lbs, .56 Nm  
 Operating Temperature: 110°C  
 Wire Strip Length: 1/4" or 6mm

### Physical

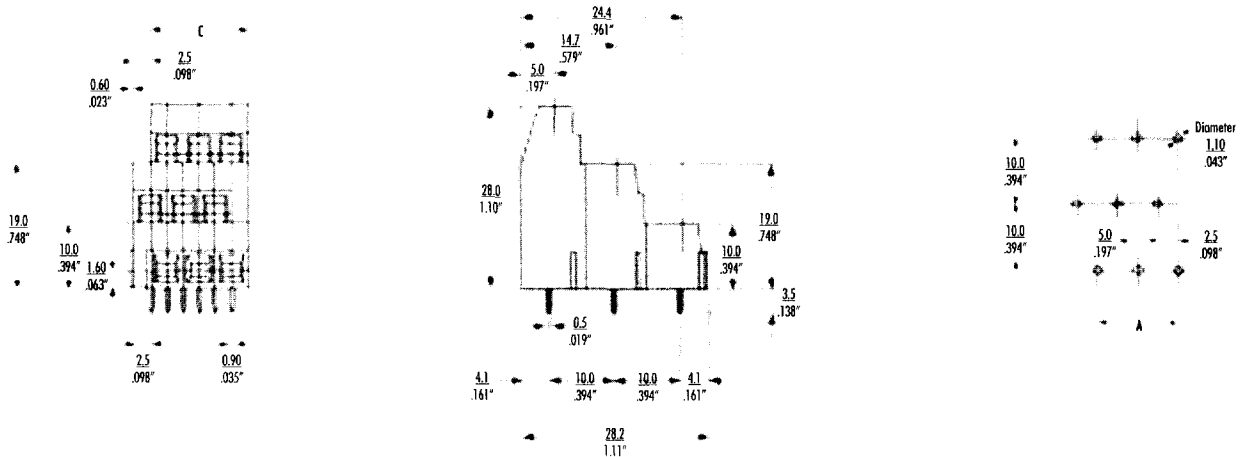
Housing: Polyamide, UL94 V-0, Black  
 Screws: Bronze  
 Screw Plating: Nickel  
 Contacts: Copper Alloy  
 Contact Plating: Tin  
 Pressure Clamp: Brass  
 Pressure Clamp Plating: Nickel  
 Wire Range: 14 to 26 AWG, 1.5 to 0.2mm<sup>2</sup>

**39890  
 Modular**



**89 Series**

## CATALOG DRAWING (FOR REFERENCE ONLY)



## ORDERING INFORMATION AND DIMENSIONS

Order # (Engineering #) Replace XX with # of circuits, 06-72

Tin Plated  
 39890-08XX (8931XX)

| # of Circuits | A    |      | C    |      | # of Circuits | A    |       | C    |       |
|---------------|------|------|------|------|---------------|------|-------|------|-------|
|               | in   | mm   | in   | mm   |               | in   | mm    | in   | mm    |
| 4             | .20  | 5.0  | .39  | 10.0 | 28            | 2.56 | 65.0  | 2.76 | 70.0  |
| 6             | .39  | 10.0 | .59  | 15.0 | 30            | 2.76 | 70.0  | 2.95 | 75.0  |
| 8             | .59  | 15.0 | .79  | 20.0 | 32            | 2.95 | 75.0  | 3.15 | 80.0  |
| 10            | .79  | 20.0 | .98  | 25.0 | 34            | 3.15 | 80.0  | 3.35 | 85.0  |
| 12            | .98  | 25.0 | 1.18 | 30.0 | 36            | 3.35 | 85.0  | 3.54 | 90.0  |
| 14            | 1.18 | 30.0 | 1.38 | 35.0 | 38            | 3.54 | 90.0  | 3.74 | 95.0  |
| 16            | 1.38 | 35.0 | 1.57 | 40.0 | 40            | 3.74 | 95.0  | 3.94 | 100.0 |
| 18            | 1.57 | 40.0 | 1.77 | 45.0 | 42            | 3.94 | 100.0 | 4.13 | 105.0 |
| 20            | 1.77 | 45.0 | 1.97 | 50.0 | 44            | 4.13 | 105.0 | 4.33 | 110.0 |
| 22            | 1.97 | 50.0 | 2.16 | 55.0 | 46            | 4.33 | 110.0 | 4.53 | 115.0 |
| 24            | 2.16 | 55.0 | 2.36 | 60.0 | 48            | 4.53 | 115.0 | 4.72 | 120.0 |
| 26            | 2.36 | 60.0 | 2.56 | 65.0 |               |      |       |      |       |

\*Consult factory for imprinting and other options