

New Jersey Semi-Conductor Products, Inc.

20 STERN AVE.
 SPRINGFIELD, NEW JERSEY 07081
 U.S.A.

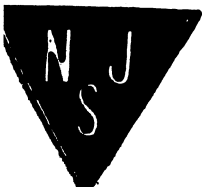
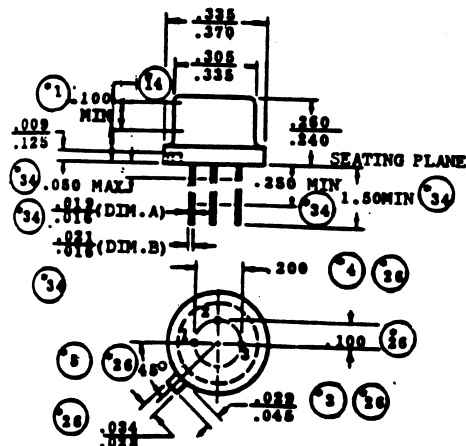
TELEPHONE: (973) 378-2922
 (212) 227-6005
 FAX: (973) 378-8960

2N2102

Description:

Si NPN Power BJT, I(C) = 1 A to 2.4 A

Ic Max. (A).....	1.0
Vbr CEO.....	65
Vbr CBO.....	120
Max. PD (W).....	1.0
Derate Above 25xC.....	
Min hFE.....	40
Max. hFE.....	120
@Ic (test) (A).....	150m
@VCE (V).....	10
Trans. Freq (Hz) Min.....	60M
Icbo Max. @Vcb Max. (A).....	2.0n
R(sat) (j).....	
Tr Max. (s).....	
t(f) Max. (s).....	
Oper. Temp (xC) Max.....	200u
Pkg Style.....	TO-5
Surface Mounted (Y/N).....	N
Pinout Equivalence Number.....	3-12



NJ Semi-Conductors reserves the right to change test conditions, parameter limits and package dimensions without notice. Information furnished by NJ Semi-Conductors is believed to be both accurate and reliable at the time of going to press. However NJ Semi-Conductors assumes no responsibility for any errors or omissions discovered in its use. NJ Semi-Conductors encourages customers to verify that datasheets are current before placing orders.