

SHIELDED SMD POWER INDUCTOR



PX15022S SERIES



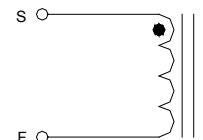
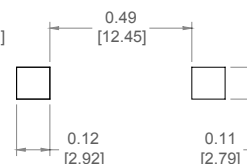
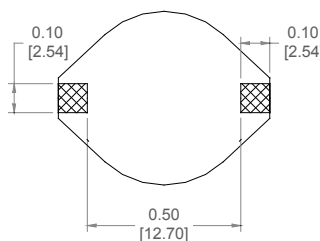
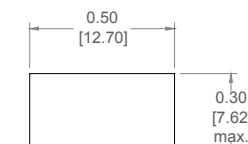
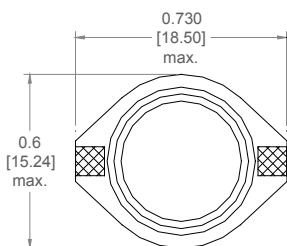
- RoHS Compliant Product
- Operating Temperature: -40°C to +85°C
- Inductance test @ 100KHz, 0.1V_{RMS} @ 0ADC
- Add -M for inductance tolerance ±20% after the part no.
Optional inductance tolerance subject to request.
- I_{DC}: 10% inductance drop typical from its initial value at I_{DC}
- I_{RMS}: Δ40°C temperature rise max at I_{RMS}

ELECTRICAL SPECIFICATION @ 25°C

PART NUMBER PX15022S-	L (μH) ±20%	I _{DC} (A)	I _{RMS} (A)	R _{DC} MAX (W)
102	1.0	18.0	6.5	0.016
222	2.2	14.0	5.0	0.023
332	3.3	12.5	4.7	0.026
472	4.7	11.5	4.4	0.028
562	5.6	10.8	4.1	0.030
103	10	8.0	3.9	0.040
153	15	7.0	3.4	0.048
223	22	6.0	3.1	0.059
333	33	5.0	2.8	0.075
473	47	4.0	2.4	0.097
683	68	3.0	2.0	0.138
104	100	2.4	1.7	0.207
154	150	2.1	1.3	0.293
224	220	1.9	1.1	0.470
334	330	1.1	0.86	0.780
474	470	1.1	0.73	1.08
684	680	0.96	0.64	1.40
105	1000	0.80	0.53	2.01

Mechanical

Schematic



Dimensions

Unless otherwise specified, all tolerances are:

inch: .XX : ± 0.015 .XXX : ±0.010
mm: X,X : ± 0,38 X,XX : ±0,25

Product performance is limited to specified parameter. Data is subject to change without prior notice.

PX15022S-XX
0602JW

13200 Estrella Ave., Bldg. B
Gardena, CA 90248

Tel: (310) 325-1043
Fax: (310) 325-1044

www.mpsind.com
sales@mpsind.com