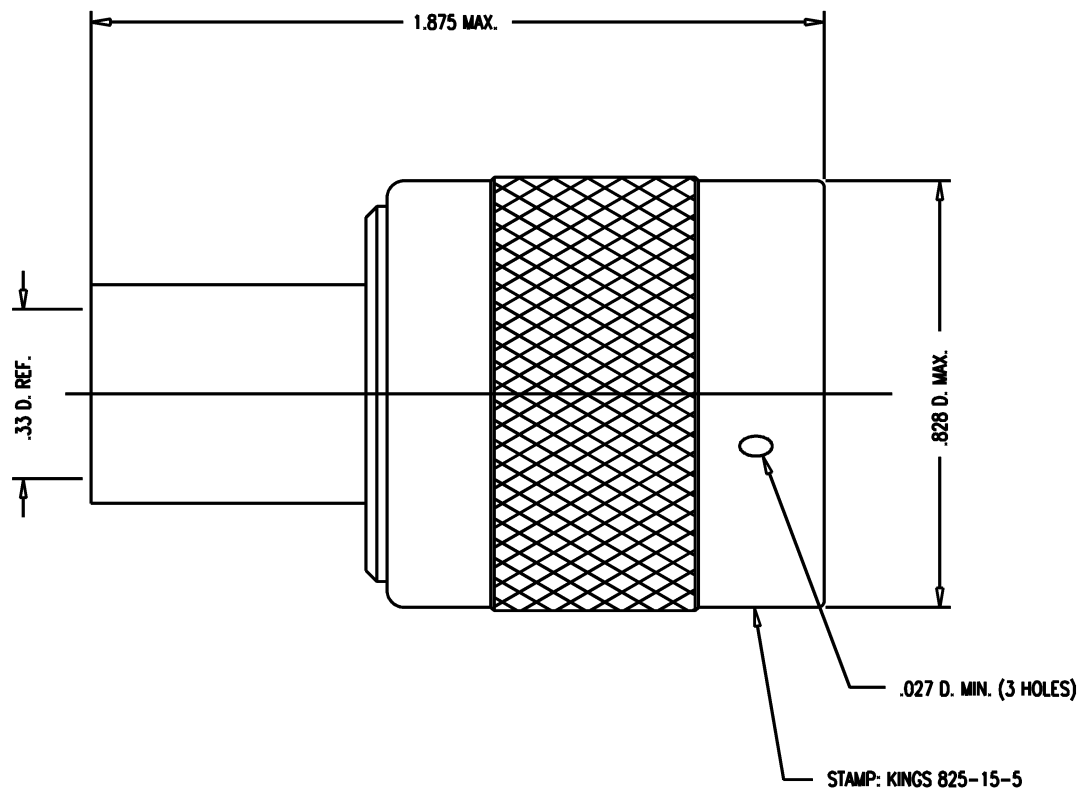


# GSD

825-15-5



- NOTES:**
1. FOR USE WITH MCDONNELL DOUGLAS ST5M1398-001, 002 & .003 CABLE.
  2. FOR CABLING INSTRUCTIONS SEE 3-597.
  3. FOR CABLE TRIMMING USE KTJ-188, KTD-230 & KTF-5.
  4. FOR CRIMPING USE DIE KTH-2005.
  5. INTERFACE PER MIL-STD-348, FIG. 309-1.
  6. MARK PACKAGE: KINGS 825-15-5  
MDAE 5M1986-001
  7. MATERIALS:  
INSULATOR: TEFLON, ASTM-D-4894  
GASKET: SIL. RUB., ZZ-R-765  
K-GRIP SLEEVE: COM. BRONZE, ASTM-B-135  
C-RING: PHOS. BRONZE, ASTM-B-103  
OUTER CONTACT: BER. COP., ASTM-B-196  
ALL OTHER PARTS: BRASS, ASTM-B16
  8. FINISHES:  
ALL METAL PARTS: SILVER PLATE PER QQ-S-365
  9. ELECTRICAL CHARACTERISTICS:  
NOMINAL IMPEDANCE: 50 OHMS  
VOLTAGE RATING: 1500 VRMS  
FREQUENCY RANGE: DC TO 11 GHz

**REVISIONS**

ISSUE	CHANGES
0	ER 35589 KH 02/06/95

KAM5273

SCALE 4:1

APPROX SURFACE AREA

SUPERSIDES 825-1-5-MC7

USED ON

REF: MCDONNELL AIRCRAFT /5M1986-001 REV. B

PLUG, SC

DRAWN KH 02/06/95

DESIGN LI 02/07/95

APPR. DATE

**KINGS**  
ELECTRONICS CO., INC.  
TUCKAHOE, NEW YORK 10707

# GSD

825-15-5