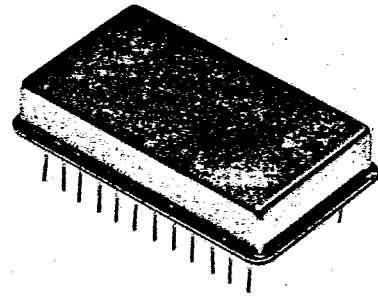


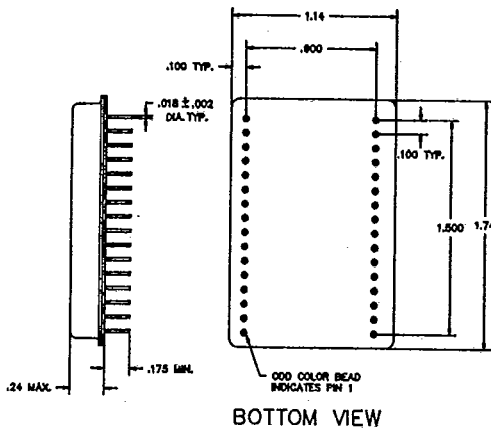
ATN-1036

50-500 MHz 6 Step Digital Attenuator

- 6 Line TTL Control
- Excellent Stability Over Temperature
- Hermetic Enclosure
- Low Insertion Loss
- High Speed Switching



Outline Drawing



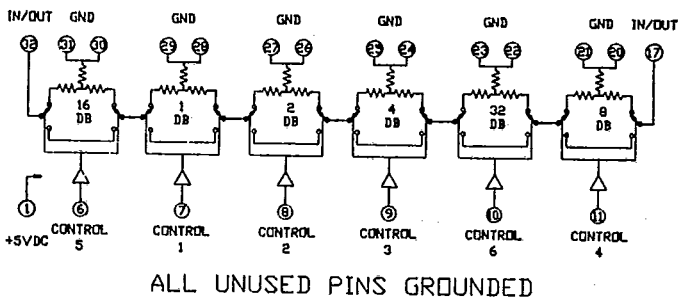
Absolute Maximum Ratings

Ambient Operating Temperature-54°C to + 100°C
 Storage Temperature-65°C to + 125°C
 Maximum DC Voltage..... + 7 Volts

Electrical Specifications @ 25°C

PARAMETER	TYP.	MIN.	MAX.
Frequency (MHz)	---	50-500	---
Insertion Loss Steps	4.0dB	---	5.0dB
1.0dB	---	0.8dB	1.2dB
2.0dB	---	1.8dB	2.2dB
4.0dB	---	3.8dB	4.2dB
8.0dB	---	7.8dB	8.2dB
16.0dB	---	15.7dB	16.3dB
32.0dB	---	31.0dB	33.0dB
TOTAL 63.0dB	---	61.8dB	65.2dB
VSWR	1.3:1	---	1.5:1
Switching Speed	1.0usec	---	2.0usec
RF Power-Operational	---	---	+13dBm
RF Power-Non-Destruct	---	---	+27dBm
DC Power +5 Volts	150ma	---	175ma

Schematic Diagram



6 Line TTL, Load Factor 1

SWITCHING CONDITIONS

LOGIC 1-Attenuation in

Typical Performance

