

DIN CONNECTORS

APPLICATIONS

The DIN family of connectors includes male and female plugs and receptacles with 2 to 8 circuits. Important receptacle variations include solder lug or PC terminations, as well as right-angle PC mounting. Other features available are bright nickel-plated or colorful plastic snap-on shells. All are precision manufactured.

DESIGN FEATURES



GROUNDING/SHIELDING:

A "Ground Key-Rib" or "Ground Contact" provided in each plug and receptacle (except those with plastic shells or housings) ground or shield to connector shell. Ground/shield circuit automatically engage upon connector mating. Contacts can be "jumper-wired" between contact and "Ground Key-Rib" and/or "Ground Contact" terminal for grounding.

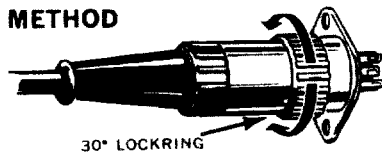
BUILT-IN SWITCHING:

Many connectors include built-in switches with up to double break circuitry.

CONTROL SWITCHING CONNECTORS:

Choose from a complete line of monaural and/or stereo speaker switching. Certain plugs can change from mono to stereo connections.

COUPLING METHOD



30° TWIST COUPLING:

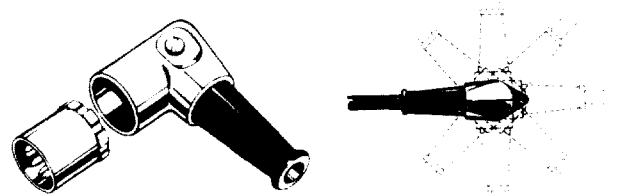
On locking types, lockring couples mating plugs and receptacles securely, even under shock and vibration conditions.

CONTACT PINS AND SPRINGS:

- All male plugs have tin-plated pins.
- All control and switching receptacles have silver-plated "forkshape" contact springs.
- All metal flange receptacles have tin-plated "fork-shape" contact springs and ground contact with solder terminal riveted to flange or center terminal of plug.
- Metal shell plugs have tin-plated ground contact as metal flange receptacles, above.
- Ground contact spring makes contact with ground key-rib barrel of mating plug.

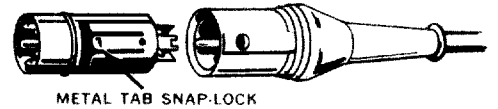
Designed for test equipment, instruments, computers, cameras, control devices and many other types of low level circuits, DIN connectors have been field-tested and proved over many years in a wide variety of critical applications. They are among the most popular, high quality, low-cost connectors in the world.

8-POSITION RIGHT-ANGLE PLUG



Unique 8-position barrel enables positioning of cable entry at any of eight angles and is ideal for cramped area mounting.

SNAP-LOCK PLASTIC SHELLS



"Snap-Lock" holds plastic shell to metal plug barrel securely and provides fast, simple disassembly/reassembly. 3 to 7 contacts.

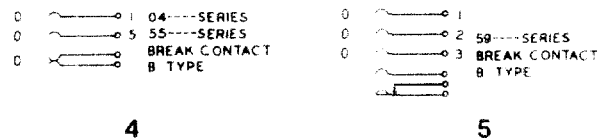
POLARIZATION

Polarization by contact arrangement and a ground key-rib virtually eliminates possibility of incorrect mating.

CABLE ENTRIES

Flexible black plastic bushings provide a strong strain relief. Standard cable entry is .219 inch (5.56 mm) diameter. Other bushing colors available on special order. Heavy duty cable clamp accommodates most standard size cables.

SCHEMATIC CIRCUITS



DIMENSIONS ARE FOR REFERENCE ONLY $\frac{\text{inch}}{\text{(mm)}}$

NOTE: Contact your Switchcraft Representative for price and delivery.

DIN CONNECTORS (continued)

DIN CORD PLUG PART NUMBERING SYSTEM

Contact Arrangement Angle	Series	Color	Number of Contacts	Gender
03 -	B STRAIGHT METAL SHELL	L BLACK	3	M MALE
05 180°	C LOCKING METAL SHELL		4	
09 210°	D RIGHT ANGLE METAL SHELL		5	
12 240°	G STRAIGHT PLASTIC SHELL	M GREY (G SERIES ONLY)	6	
15 270°	J STRAIGHT PLASTIC SHELL		7	
20 262°	Y LOCKING RIGHT ANGLE METAL SHELL		8	
04 -	A STRAIGHT METAL SHELL			F FEMALE
06 180°	E LOCKING METAL SHELL			
10 210°				
13 240°				
15 270°				

DIN CONNECTOR PART NUMBERING SYSTEM

Contact Arrangement Angle	Series	Terminal Type	Number of Contacts	Gender	Options
57 180°	G FLANGED FRONT MOUNT	A STRAIGHT SOLDER TERMINALS	3	M MALE	
58 180° (3 PIN, 2 BLANKS)	H LOCKING FLANGED FRONT MOUNT	B FLARED SOLDER TERMINALS	4	F FEMALE	
59 180° (PLUS SWITCH)	N STRAIGHT PC MOUNT	C PC TERMINALS	5		
60 210°	P RIGHT ANGLE PC MOUNT		6		S SHIELDED
61 240°			7		T SHORT SHIELD
62 270°			8		
70 262°					

NOTES: 1. OPTIONS AVAILABLE ON P SERIES ONLY.

 DIMENSIONS ARE FOR REFERENCE ONLY $\frac{\text{Inch}}{(\text{mm})}$

NOTE: Contact your Switchcraft Representative for price and delivery.

DIN CONNECTORS (continued)

SPECIFICATIONS

ELECTRICAL

Contact Resistance: Cord Plugs and Receptacles; .010 ohms, contact spring/pin .030 ohms, ground clip/shell.

Control and Switching Receptacles; .015 ohms, contact spring/pin; .020 ohms, switch contacts.

Dielectric Withstanding Voltage: 500 V (rms)

Contact Rating: 5-pin; 3A, 34 V DC

Leakage Resistance: 10⁵ MΩ

Recommended Wire Size: 22 wire gauge maximum

MECHANICAL

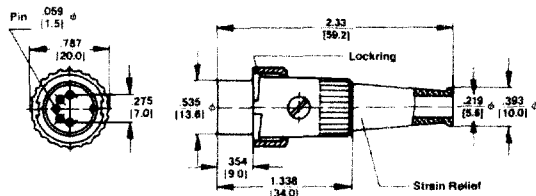
Insertion/Withdrawal Forces:

Number of Contacts	Insertion Force pound/N	Withdrawal Force pound/N
2	3.6/(16)	.45- 2.7/(2-12)
3	5.4/(24)	.67- 4.1/(3-18)
4	7.2/(32)	.90- 5.4/(4-24)
5	9.0/(40)	1.24- 6.8/(5.5-30)
6	10.8/(48)	1.46- 8.1/(6.5-36)
7	12.6/(56)	1.68- 9.5/(7.5-42)
8	14.4/(64)	1.90-10.8/(8.5-48)

NOTE: All connectors meet DIN specifications #41524. Din specification numbers (except for 4-pin, 5-pin @ 240° and 8-pin @ 262°)

DIN PLUGS

STRAIGHT CORD PLUG with 30° lock ring



Type 05CL5M - typical Male plug with ground key-rib. Unique 30° turn locking securely fastens two halves of connector. Mates with lock flange female connectors and receptacles. Insert screw holds insert assembly in shell and also retains locking on shell. Flexible black strain relief with 7/32" diameter cable entry. Heavy duty clamp.

ORDERING INFORMATION

Part Number	Description	Pin Arrangement
03CL2M	2 pins with insulated switch actuator	1
05CL3M	3 pins at 180°	2
09CL4M	4 pins at 210°	3
12CL5M	5 pins at 240°	4
15CL7M	7 pins at 270°	7
15CL8M	8 pins at 270°	9

Available on special order only; contact Switchcraft for price and delivery.

MATERIAL

Shell: Die-cast zinc alloy, nickel-plated.

Receptacle Mounting Flange: Steel.

Receptacle Body: Plastic.

Insert Material: Plastic.

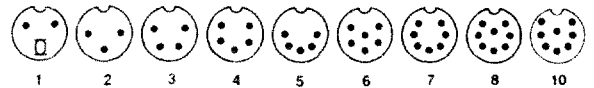
Socket Contacts: Tin-plated.

Pin Contacts: Tin-plated.

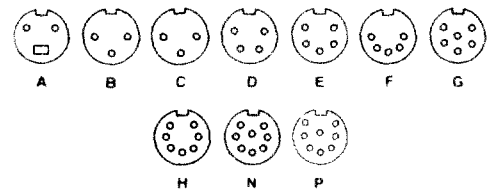
Switching Contacts: Silver-plated.

Cable Relief Bushing: Soft plastic.

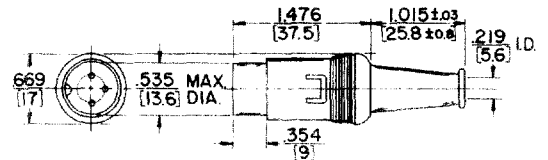
PIN ARRANGEMENTS



CONTACT ARRANGEMENTS



STRAIGHT CORD PLUG with Shielded Barrel



Type 15GM7M - typical Male cord plug with shielded barrel and insulated snaplock plastic body. Two piece metal barrel surrounds pin insert to form an electrical shield. The entire insert assembly is held together by snapping the insulated plastic shell over the assembly. The barrel's special metal tab locks the shell in place. Standard color of plastic shell is gray. All-purpose cable clamp.

ORDERING INFORMATION

Part Number	Description	Pin Arrangement
05GM3M	3 pins at 180° Gray body and strain relief.	2
09GM4M	4 pins at 210° Gray body and strain relief	3
12GM5M	5 pins at 240° Gray body and strain relief	4
12GM6M	6 pins at 240° Gray body and strain relief	6
15GM7M	7 pins at 270° Gray body and strain relief	7
15GM8M	8 pins at 270° Gray body and strain relief	9
20GM8M	8 pins at 262° Gray body and strain relief	10

SPECIFYING NOTE: Use letter "JL" in place of "GM" to order same part number with black housing.

DIMENSIONS ARE FOR REFERENCE ONLY $\frac{\text{Inch}}{\text{(mm)}}$

NOTE: Contact your Switchcraft Representative for price and delivery.

SWITCHCRAFT, INC. 5555 N. Elston Ave. • Chicago, IL 60630 • 773 792-2700 • FAX: 773 792-2129 • www.switchcraft.com

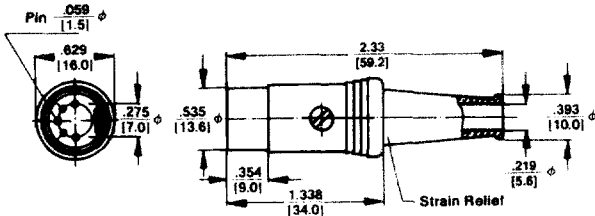
DIN PLUGS AND RECEPTACLES

STRAIGHT CORD PLUG with Extended Barrel



Type 12BL6M - typical

Male plug with ground key-rib. Nickel-plated diecast handle. Contact friction coupling. Flexible black strain relief. Heavy duty cable clamp.



ORDERING INFORMATION

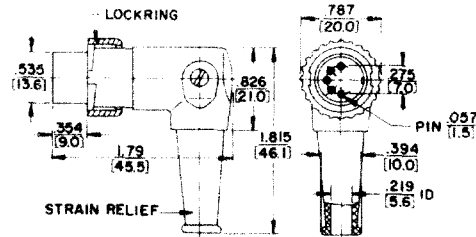
Part Number	Description	Pin Arrangement
03BL2M	2 pins with insulated switch actuator	1
05BL3M	3 pins at 180°	2
05BL5M	5 pins at 180°	5
09BL4M	4 pins at 210°	3
12BL5M	5 pins at 240°	4
12BL6M	6 pins at 240°	6
15BL7M	7 pins at 270°	7
15BL8M	8 pins at 270°	9
20BL8M	8 pins at 262°	10

RIGHT-ANGLE CORD PLUG with 8 Position Barrel and 30° Lockring



Type 05YL5M - typical

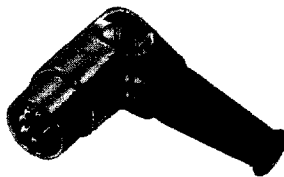
Right-angle chassis hugging, male plug with flexible strain relief. Unique 8-position barrel gives you a choice of any one of eight different cable entry angles. ground key rib 30° turn locking securely fastens two halves of connector.



ORDERING INFORMATION

Part Number	Description	Pin Arrangement
05YL3M	3 pins at 180°	2
05YL5M	5 pins at 180°	5
09YL4M	4 pins at 210°	3
12YL5M	5 pins at 240°	4

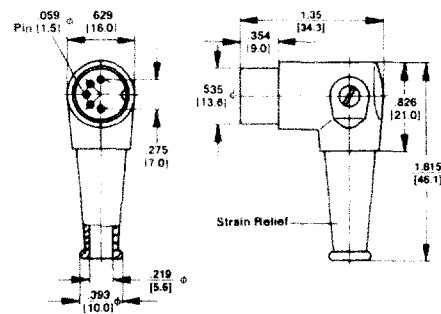
RIGHT-ANGLE CORD PLUG with 8 Position Barrel



05DL5M shown

Type 05DL5M - typical

Right-angle chassis hugging, male plug with flexible black rubber strain relief. Unique 8-position barrel offers a choice of eight different cable entry angles.



ORDERING INFORMATION

Part Number	Description	Pin Arrangement
03DL2M	2 pins with insulated switch actuator	1
05DL3M	3 pins at 180°	2
05DL5M	5 pins at 180°	5
09DL4M	4 pins at 210°	3
12DL5M	5 pins at 240°	4
12DL6M	6 pins at 240°	6
15DL7M	7 pins at 270°	7

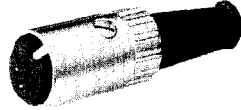
Available on special order only; contact Switchcraft for price and delivery.

DIMENSIONS ARE FOR REFERENCE ONLY $\frac{\text{inch}}{\text{(mm)}}$

NOTE: Contact your Switchcraft Representative for price and delivery.

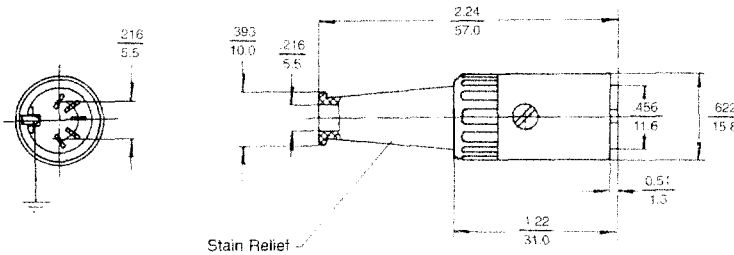
DIN PLUGS AND RECEPTACLES (continued)

STRAIGHT CORD PLUG with Flush Socket Insert



Type 04AL2F — typical

Female plug with ground contact. Diecast metal shell, nickel-plated. Two contact plug. Part number 04AL2F includes a break circuit switch (1-B) which is opened by engaging the insulated switch actuator of the mating plug or receptacle. Flexible black strain relief.



ORDERING INFORMATION

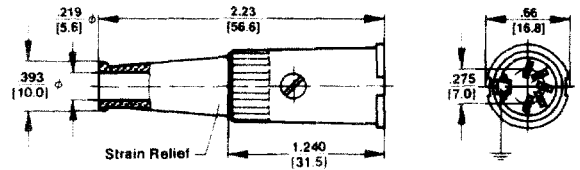
Part Number	Description	Contact Arrangement
◊04AL2F	2 contacts with closed-circuit switch (Schematic #4)	A
◊06AL3F	3 contacts at 180°	B
◊06AL5F	5 contacts at 180°	F
◊10AL4F	4 contacts at 210°	D
◊13AL5F	5 contacts at 240°	E
◊13AL6F	6 contacts at 240°	G
◊15AL7F	7 contacts at 270°	H
◊15AL8F	8 contacts at 270°	N

STRAIGHT CORD PLUG with Lock Flange



Type 06EL5F - typical

Female plug with ground contact. Lock flange designed to accept 30° locking. Insert screw firmly holds insert assembly in shell. Flexible black strain relief with 7/32 inch diameter cable entry. Heavy duty cable clamp.

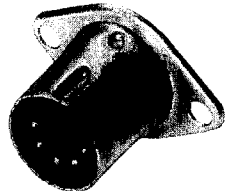


ORDERING INFORMATION

Part Number	Description	Contact Arrangement
◊04EL2F	2 contacts with insulated switch actuator	A
◊06EL3F	3 contacts at 180°	B
◊06EL5F	5 contacts at 180°	F
◊10EL4F	4 contacts at 210°	D
◊13EL5F	5 contacts at 240°	E
◊15EL7F	7 contacts at 270°	H
◊15EL8F	8 contacts at 270°	N

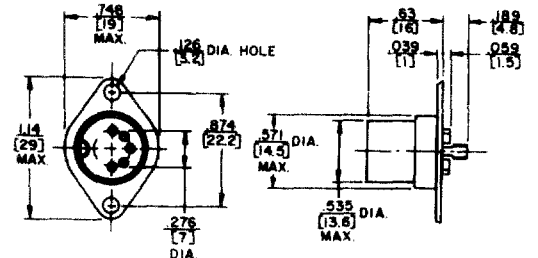
RECEPTACLE with Extended Shell

57KD5M shown



Type 57KD3M - typical

Male receptacle, 3 pins, with ground key-rib. Diecast extended shell and flange for chassis or panel mounting. Turret terminals.



ORDERING INFORMATION

Part Number	Description	Pin Arrangement
57KD3M	3 pins at 180°	2

◊ Available on special order only; contact Switchcraft for price and delivery.

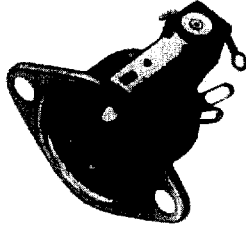
DIMENSIONS ARE FOR REFERENCE ONLY $\frac{\text{inch}}{\text{mm}}$

NOTE: Contact your Switchcraft Representative for price and delivery.

SWITCHCRAFT, INC. 5555 N. Elston Ave. • Chicago, IL 60630 • 773 792-2700 • FAX: 773 792-2129 • www.switchcraft.com

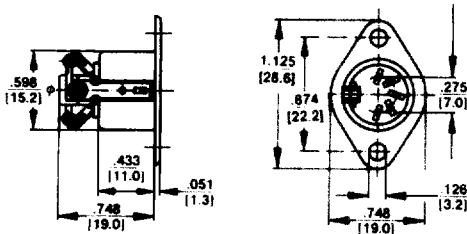
DIN RECEPTACLES (continued)

RECEPTACLE with Closed Circuit Switch



Type 59GB5F - typical

Unique 3 and 5 contact receptacles include a 1-B (closed circuit) switch which is mounted to drawn metal shell. Switch is actuated by the shell of the mating plug. Receptacles also provide complete shielding through the ground contact. Flared solder terminals.

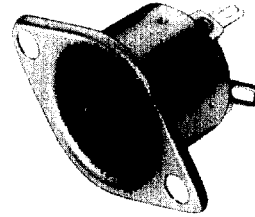


ORDERING INFORMATION

Part Number	Description	Contact Arrangement
◊59GB3F	3 contacts at 180° plus closed-circuit switch (Schematic #5)	B
◊59GB5F	5 contacts at 180° plus closed-circuit switch (Schematic #5)	F

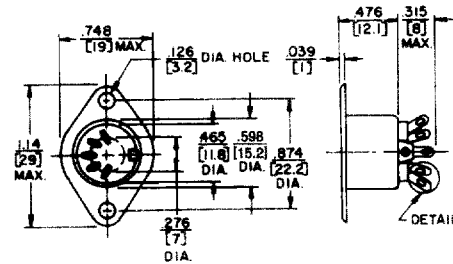
◊ Available on special order only; contact Switchcraft for price and delivery.

RECEPTACLE for Chassis or Panel Mounting For shielded and extended barrel plugs



Type 57GB5F - typical - Flared solder terminals

Drawn metal recessed shell with mounting flange and ground contact. Available flared solder terminals. Part Number 58GB3F features two extra blanks in insert for proper mating (5 pins at 180°) plug where applications may require greater connector flexibility. Flared solder terminals standard.



ORDERING INFORMATION

Part Number	Descriptions	Contact Arrangement
◊57GB3F	3 contacts at 180°	B
57GB5F	5 contacts at 180°	F
60GB4F	4 contacts at 210°	D
61GB5F	5 contacts at 240°	E
61GB6F	6 contacts at 240°	G
62GB7F	7 contacts at 270°	H
62GB8F	8 contacts at 270°	N
◊70GB8F	8 contacts at 262°	P

◊ Available on special order only; contact Switchcraft for price and delivery.

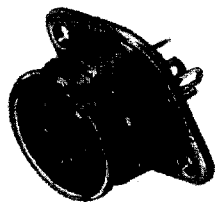
DIMENSIONS ARE FOR REFERENCE ONLY Inch
(mm)

NOTE: Contact your Switchcraft Representative for price and delivery.

DIN RECEPTACLES (continued)

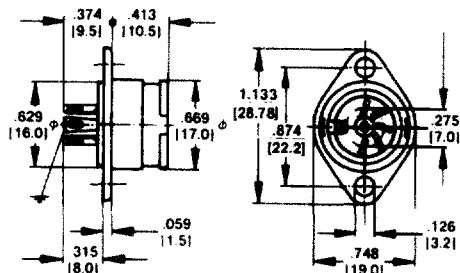
RECEPTACLE for Locking Plug

Flared solder terminals on Part Number 57HB5F



Type 61HA5F - typical

Female receptacle with ground contact. Chassis or panel mount. Diecast bayonet extension shell with mounting flange. Mates with all locking plugs, such as Part Number 12CL5M. Part Number 55HA2F includes closed-circuit switch (1-B). All receptacles have straight solder terminals, except as noted.



ORDERING INFORMATION

Part Number	Description	Pin Arrangement
◊55HA2F	2 contacts with closed-circuit switch (Schematic #4)	A
57HA3F	3 contacts at 180°	B
◊57HB3F*	3 contacts at 180°	B
57HB5F*	5 contacts at 180°	F
60HA4F	4 contacts at 210°	D
61HA5F	5 contacts at 240°	E
62HB7F*	7 contacts at 270°	H
62HB8F*	8 contacts at 270°	N

*Flared solder terminals

◊ "A" in part number indicates straight terminal. (solder lug).

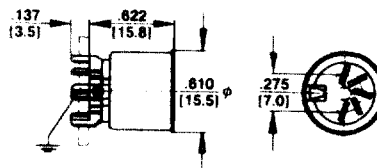
◊ Available on special order only; contact Switchcraft for price and delivery.

RECEPTACLE for Printed Circuit Board Mounting

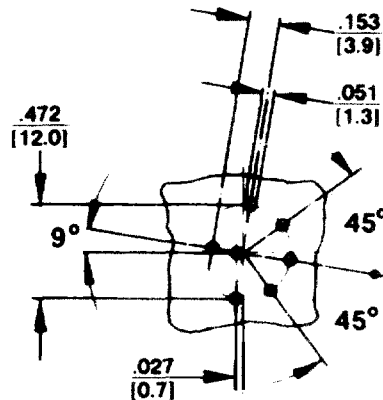


Type 57NC5F - typical

Mounts to printed circuit boards. Special PC type terminals "snap-in" precut boards. See drawing. Tubular metal shell with ground contact. Part Number 58NC3F mates with either 3 pin or 5 pin (at 180°) plugs because of its 2 extra blanks in the contact insert.



RECOMMENDED PC BOARD LAYOUT (COMPONENT SIDE)



ORDERING INFORMATION

Part Number	Description	Contact Arrangement
57NC5F	5 contacts at 180°	F
◊58NC3F	3 contacts at 180° 2 extra blanks	C
◊60NC4F	4 contacts at 210°	D
61NC5F	5 contacts at 240°	E
◊61NC6F	6 contacts at 240°	G
◊62NC7F	7 contacts at 270°	H
62NC8F	8 contacts at 270°	N

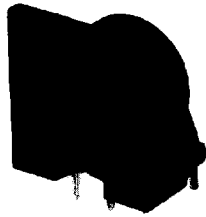
◊ "C" in part number indicates PC terminals

◊ Available on special order only; contact Switchcraft for price and delivery.

DIMENSIONS ARE FOR REFERENCE ONLY $\frac{\text{inch}}{(\text{mm})}$

NOTE: Contact your Switchcraft Representative for price and delivery.

RIGHT-ANGLE RECEPTACLE for Printed Circuit Board Mounting



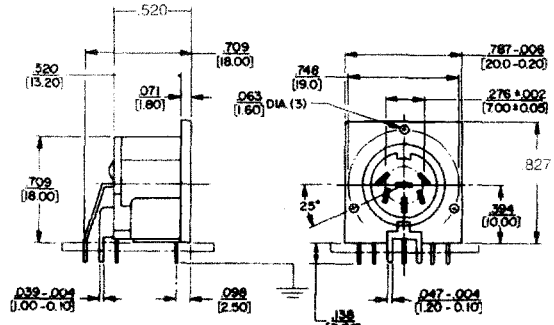
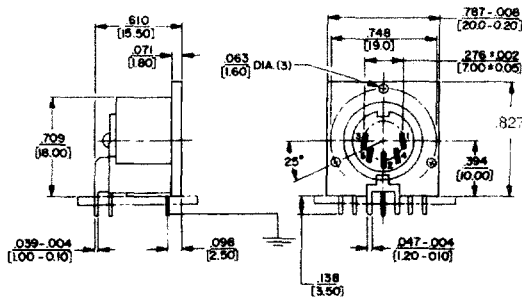
Type 57PC5F—typical

Mounts to PC boards. Plugs connect at right-angle to mounting surface. Part Number 57PC3F mates with either 3 or 5 pin (at 180°) plugs because of two extra blanks in contact insert. ground contact provides complete shielding through receptacles.

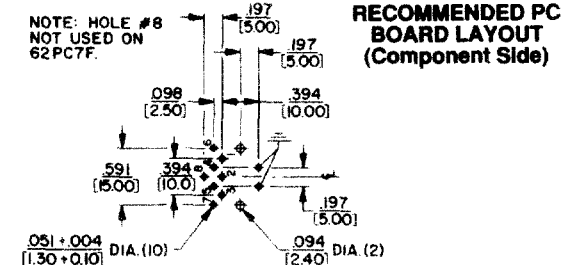
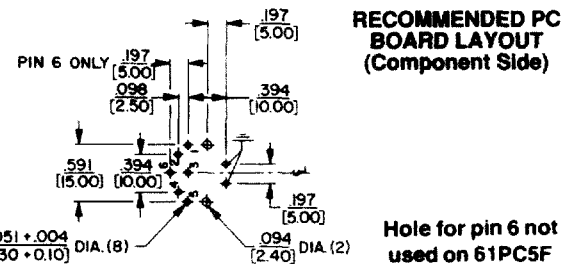
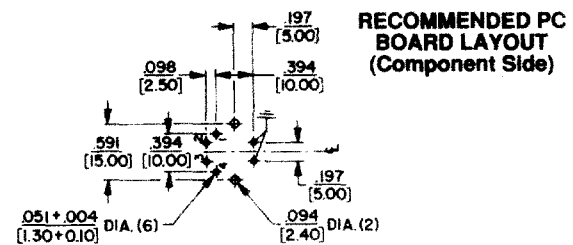
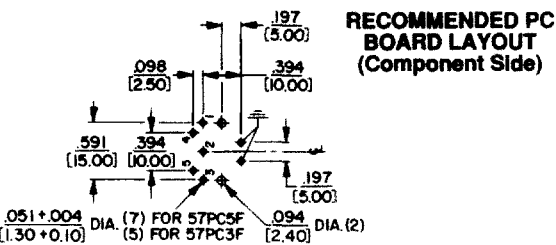
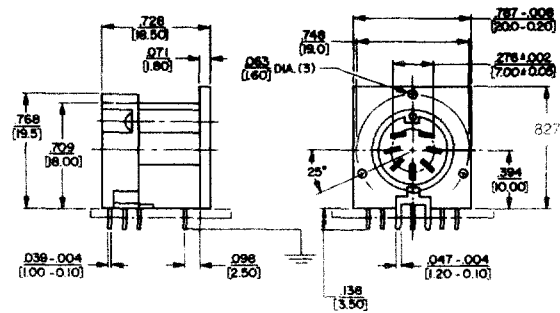
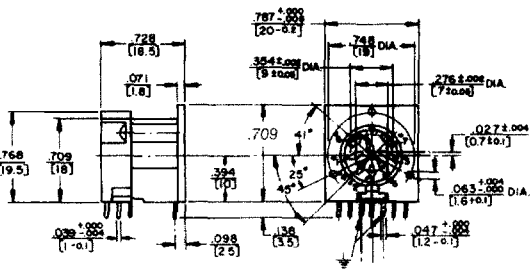
ORDERING INFORMATION

Part Number	Description	Contact Arrangement
57PC3F	3 contacts at 180°	B
57PC5F	5 contacts at 180°	F
60PC4F	4 contacts at 210°	D
61PC5F	5 contacts at 240°	E
61PC6F	6 contacts at 240°	G
62PC7F	7 contacts at 270°	H
62PC8F	8 contacts at 270°	N
70PC8F	8 contacts at 262°	P

Available on special order only; contact Switchcraft for price and delivery



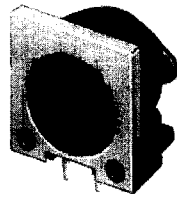
61PC5F, 61PC6F



DIMENSIONS ARE FOR REFERENCE ONLY $\frac{\text{Inch}}{(\text{mm})}$

NOTE: Contact your Switchcraft Representative for price and delivery.

RIGHT-ANGLE SHIELDED RECEPTACLE for printed circuit board mounting

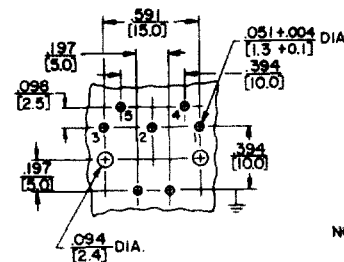
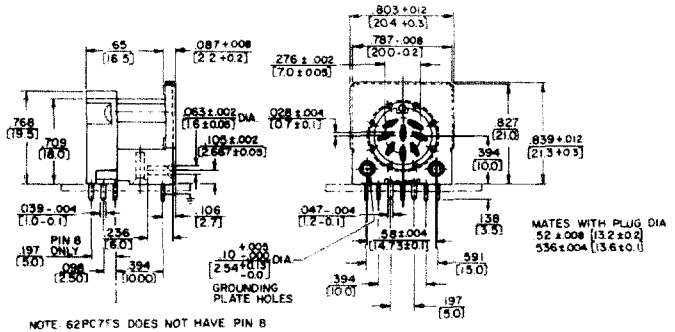
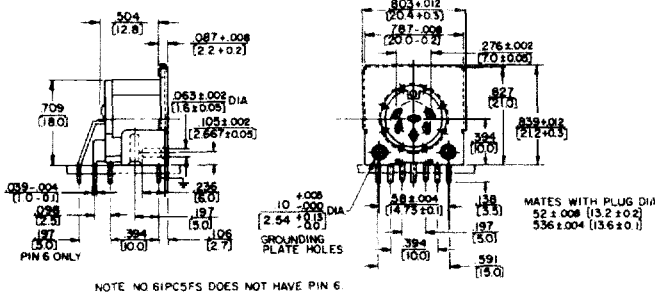
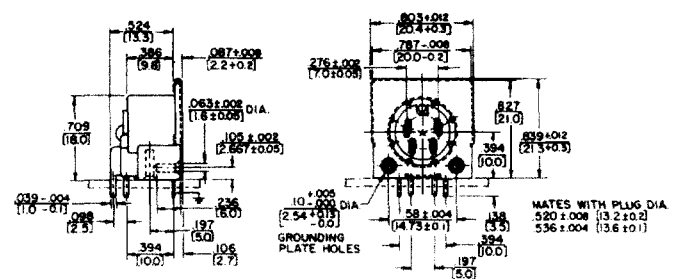
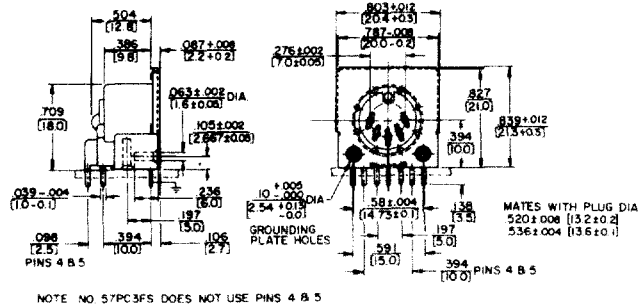


Type 60PC4FS—typical

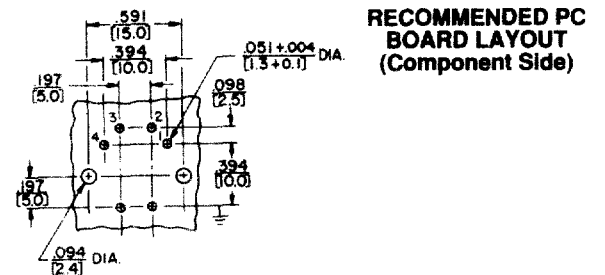
Similar to 57PC5F - Typical, except flange surrounding face of insert is metal to provide through-grounding between plug and receptacle and to potential panel/chassis for common grounding.

Part Number	Description	Contact Arrangement
◊57PC3FS	3 contacts at 180°	B
57PC5FS	5 contacts at 180°	F
◊60PC4FS	4 contacts at 210°	D
61PC5FS	5 contacts at 240°	E
61PC6FS	6 contacts at 240°	G
62PC7FS	7 contacts at 270°	H
62PC8FS	8 contacts at 270°	N

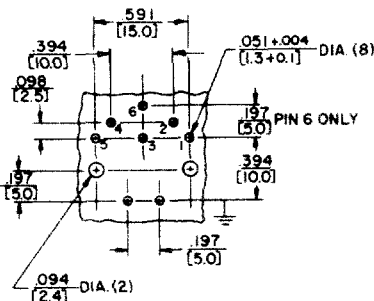
SPECIFYING NOTE: Another series of receptacles with a trimmed metal flange .052 inch (1.32 mm) below housing top is available. Replace suffix "S" with "T" in part numbers above to specify these receptacles or contact Switchcraft. Mounting: #2 or #3 self-tapping screw.
 ◊ Available on special order only; contact Switchcraft for price and delivery.



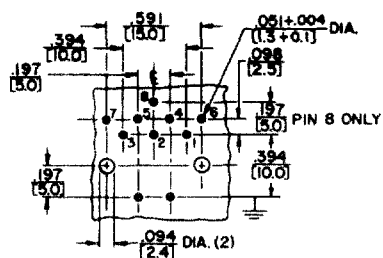
RECOMMENDED PC BOARD LAYOUT (Component Side)



RECOMMENDED PC BOARD LAYOUT (Component Side)



RECOMMENDED PC BOARD LAYOUT (Component Side)



RECOMMENDED PC BOARD LAYOUT (Component Side)

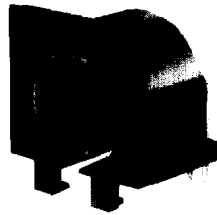
DIMENSIONS ARE FOR REFERENCE ONLY $\frac{\text{Inch}}{(\text{mm})}$

NOTE: Contact your Switchcraft Representative for price and delivery.

SWITCHCRAFT, INC. 5555 N. Elston Ave. • Chicago, IL 60630 • 773 792-2700 • FAX: 773 792-2129 • www.switchcraft.com

DIN RECEPTACLES (continued)

RIGHT-ANGLE RECEPTACLE for printed circuit board mounting

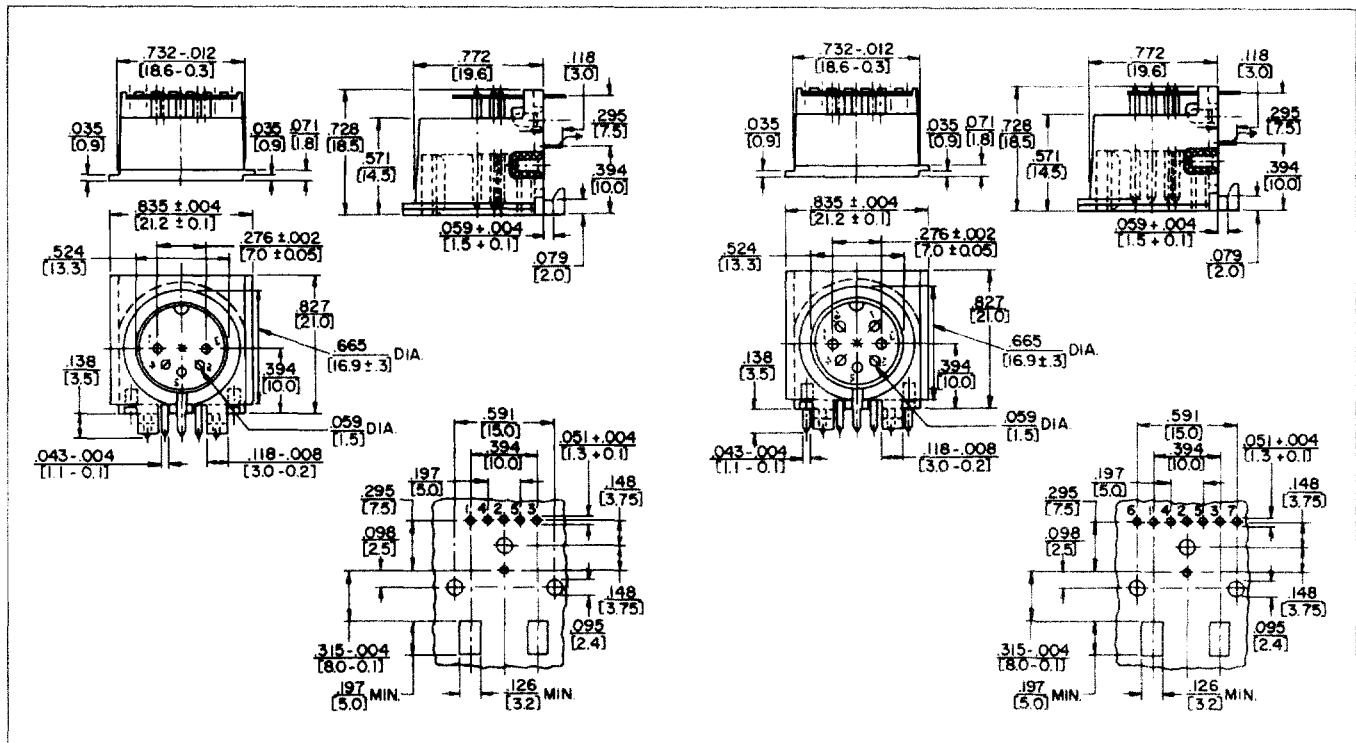


Type 62PC7M—Typical

Mounts directly to PC boards. Features interlocking flanges for side-by-side row mounting.

Part Number	Description	Pin Arrangement	Mating Plugs
57PC5M	5 pins @ 180°	5	06AL5F
62PC7M	7 pins @ 270°	7	15AL7F

Available on special order only; contact Switchcraft for price and delivery.



MINI-DIN CONNECTOR PART NUMBERING SYSTEM

SERIES	NUMBER OF CONTACTS	GENDER	MOUNTING TYPE	CONTACT PLATING	SNAP-IN GROUND	SHIELDED
SMD MINI-DIN	3	F FEMALE	RA RIGHT ANGLE PC	0 GOLD	1 NO	0 NO
	4			1 SILVER	2 YES	1 YES
	5					
	6					
	7					
	8					

DIMENSIONS ARE FOR REFERENCE ONLY $\frac{\text{Inch}}{\text{(mm)}}$

NOTE: Contact your Switchcraft Representative for price and delivery.

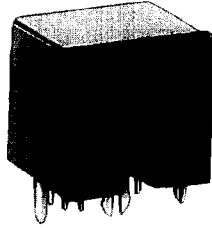
All products shown in this catalog are covered by Switchcraft's limited lifetime warranty

Registered trademark of Switchcraft, Inc.

CONNECTORS AND RECEPTACLES

DIN RECEPTACLES (continued)

MINI-DIN RIGHT-ANGLE RECEPTACLES



Miniature DIN right-angle connectors are designed for personal computer, video and data communications, medical and instrumentation equipment and systems.

RIGHT-ANGLE, PC MOUNT RECEPTACLES

Available with 3 through 8 contacts, female only, receptacles also have a standard (and separate) ground contact system. Ground terminal can be straight or snap-in type. Snap-in terminals are bifurcated to assure tight hold down on PC board before, during and after soldering. Solder wicking around the terminal strengthens the connection. Additionally, PC terminals are staggered to assure more "hold down" capability during soldering.

Receptacle/plug retention is "friction" type, and a separate outer shield can be specified.

Series SMD*FRAX10; 3 through 8 contacts, female, right-angle PC mount, straight ground terminal, and no outer shield.

Series SMD*FRAX20; Same as SMD*FRAX10, except with bifurcated snap-in ground terminal.

Series SMD*FRAX11; 3 through 8 contacts, female, right-angle PC mount, straight ground terminal, and outer shield.

Series SMD*FRAX21; Same as SMD*FRAX11, except with snap-in ground terminal.

Dimensions: .552 inch (14 mm) wide x .502 inch (12.8 mm) maximum depth x .642 inch (16.3 mm) height, including terminals.

SPECIFICATIONS

Ratings: 1A, 100 VAC; 2A, 12 VDC.

Insulation Resistance: 50 MΩ minimum

Dielectric Strength: 250 VDC for 1 minute.

Contact Resistance: 30 mΩ maximum

Insertion/Withdrawal Force: 0.8 to 5 kilograms

Withdrawal Force: 0.8 to 4 kilograms

Contacts/Terminals: Copper alloy, silver or gold-plated

Ground Terminal: Copper alloy, nickel-plated.

External Shield: Copper alloy, solder-coated.

Body: Black molded thermoplastic, UL 94V-0.

ORDERING INFORMATION

MINIATURE RIGHT-ANGLE PC RECEPTACLES—UNSHIELDED

Part Numbers		Con-tacts	External Shield	Snap-In Ground Terminal
Gold ¹	Silver			
SMD3FRA010	SMD3FRA110	3	No	No
SMD4FRA010	SMD4FRA110	4	-	-
SMD5FRA010	SMD5FRA110	5	-	-
SMD6FRA010	SMD6FRA110	6	-	-
SMD7FRA010	SMD7FRA110	7	-	-
SMD8FRA010	SMD8FRA110	8	-	-

MINIATURE RIGHT-ANGLE PC RECEPTACLES—SHIELDED

Part Numbers		Con-tacts	External Shield	Snap-In Ground Terminal
Gold ¹	Silver			
SMD3FRA011	SMD3FRA111	3	Yes	No
SMD4FRA011	SMD4FRA111	4	-	-
SMD5FRA011	SMD5FRA111	5	-	-
SMD6FRA011	SMD6FRA111	6	-	-
SMD7FRA011	SMD7FRA111	7	-	-
SMD8FRA011	SMD8FRA111	8	-	-

MINIATURE RIGHT-ANGLE PC RECEPTACLES—SHIELDED WITH SNAP-IN GROUND TERMINAL

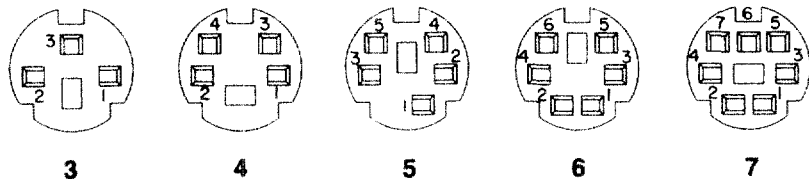
Part Numbers		Con-tacts	External Shield	Snap-In Ground Terminal
Gold ¹	Silver			
SMD3FRA021	SMD3FRA121	3	Yes	Yes
SMD4FRA021	SMD4FRA121	4	-	-
SMD5FRA021	SMD5FRA121	5	-	-
SMD6FRA021	SMD6FRA121	6	-	-
SMD7FRA021	SMD7FRA121	7	-	-
SMD8FRA021	SMD8FRA121	8	-	-

MINIATURE RIGHT-ANGLE PC RECEPTACLES—UNSHIELDED WITH SNAP-IN GROUND TERMINAL

Part Numbers		Con-tacts	External Shield	Snap-In Ground Terminal
Gold ¹	Silver			
SMD3FRA020	SMD3FRA120	3	No	Yes
SMD4FRA020	SMD4FRA120	4	-	-
SMD5FRA020	SMD5FRA120	5	-	-
SMD6FRA020	SMD6FRA120	6	-	-
SMD7FRA020	SMD7FRA120	7	-	-
SMD8FRA020	SMD8FRA120	8	-	-

¹ Contact/pin plating, see "Specifications."

CONTACT ARRANGEMENTS
(viewed from contact side)

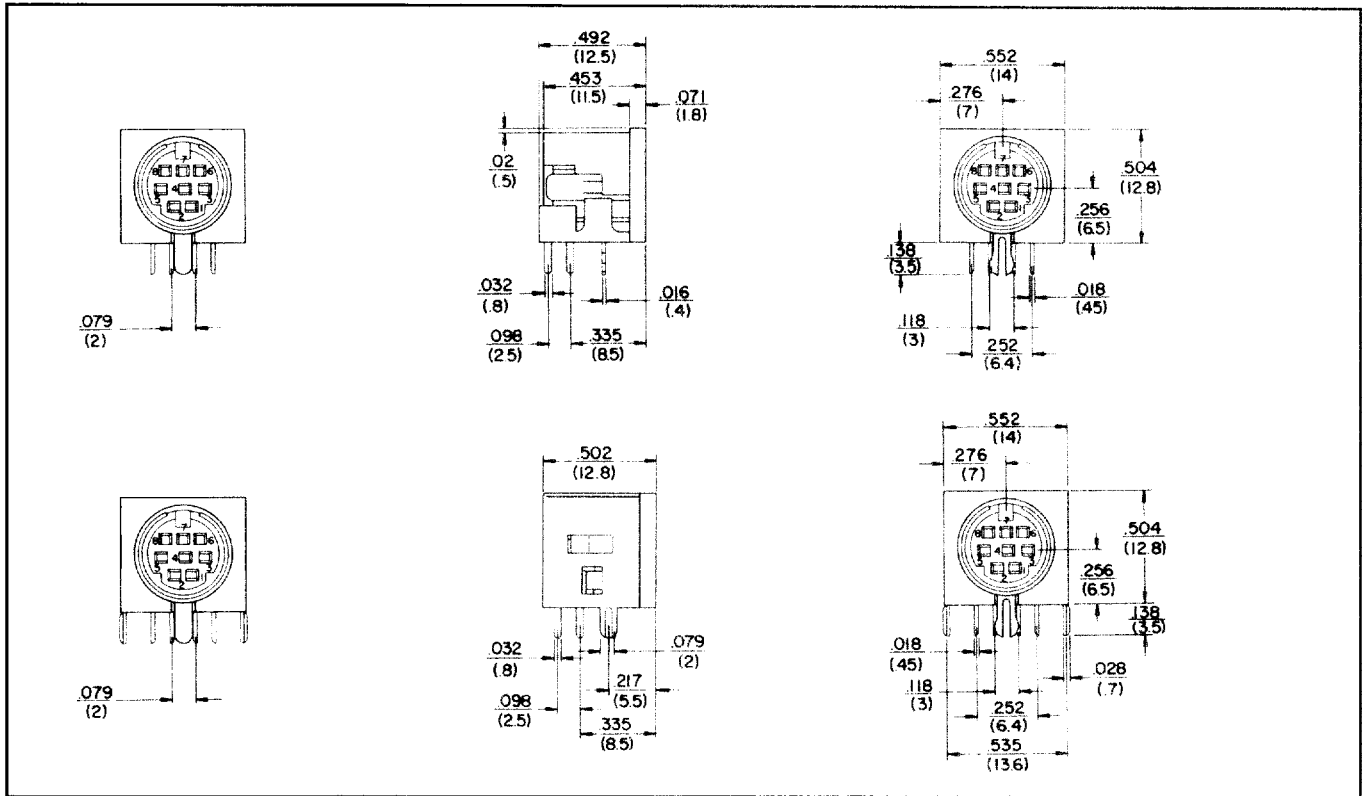


DIMENSIONS ARE FOR REFERENCE ONLY Inch
(mm)

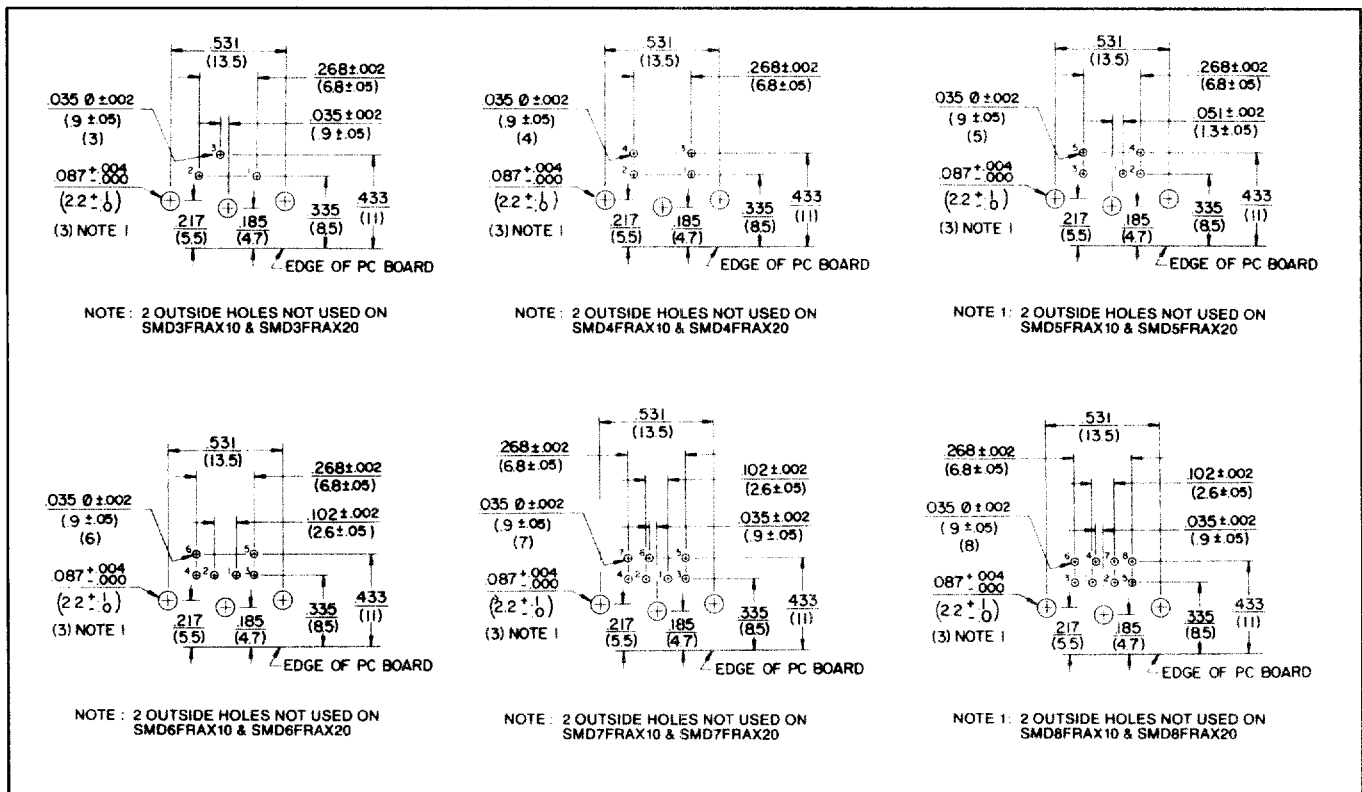
NOTE: Contact your Switchcraft Representative for price and delivery.

SWITCHCRAFT, INC. 5555 N. Elston Ave. • Chicago, IL 60630 • 773 792-2700 • FAX: 773 792-2129 • www.switchcraft.com

DIMENSIONAL DRAWINGS



RECOMMENDED PC BOARD LAYOUTS (VIEWED FROM COMPONENT SIDE)



DIMENSIONS ARE FOR REFERENCE ONLY Inch
(mm)

NOTE: Contact your Switchcraft Representative for price and delivery.

