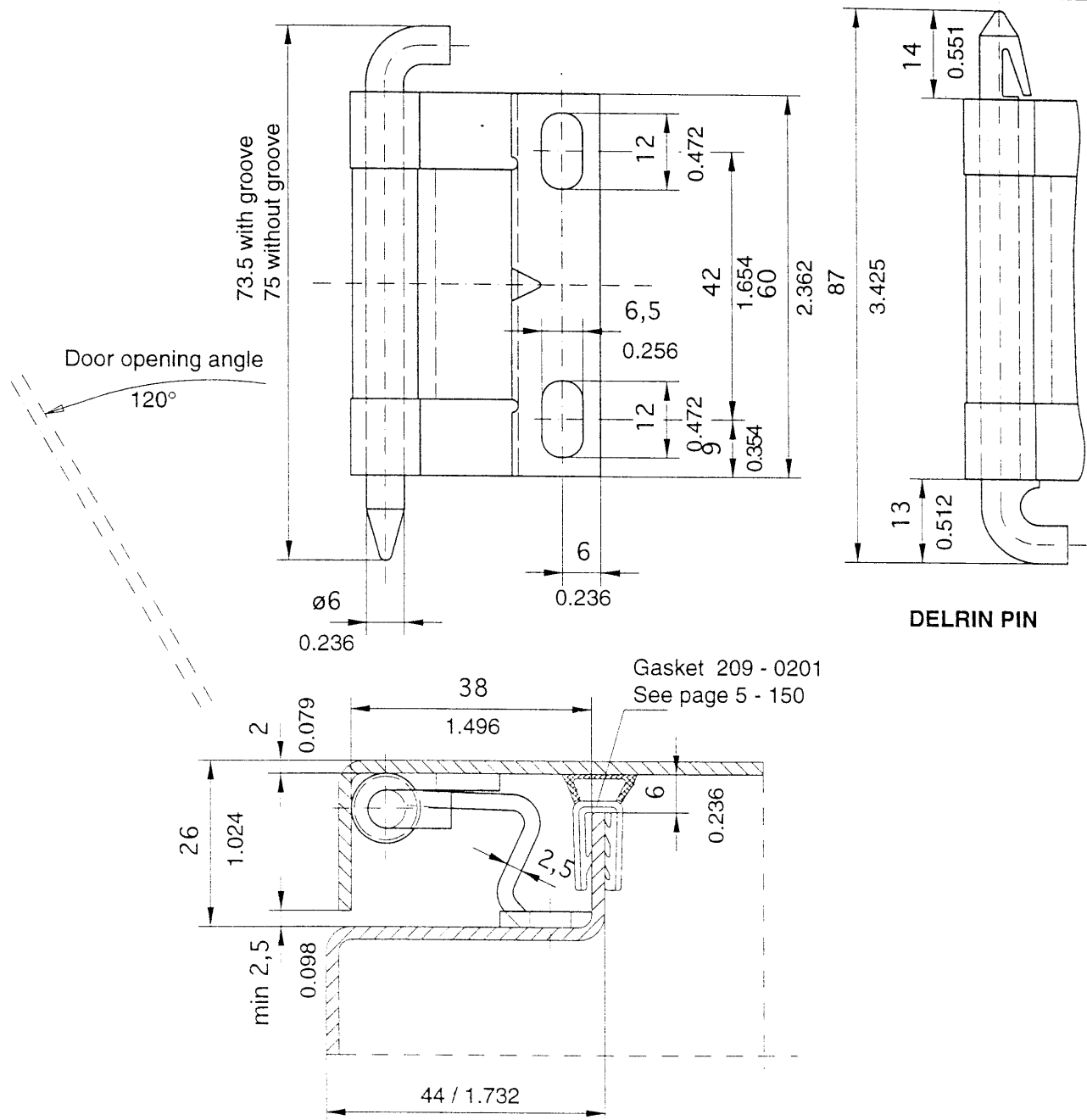




Hinge

for door bending 26 mm

Page
4 - 140



Concealed hinge, for surface mounted doors. RH/LH application.

The width of the door part allows for easy point welding.

The hinge can also be supplied with a DELRIN pin (see page 6 - 050) which can be mounted upside-down for very low enclosures.

Frame part: screw-on.

Door part: weld-on.

Material: Steel, galv.

Door parts: Steel, not plated

Version	Part - No.
Hinge assy. with pin made of galv. steel	216 - 9004
*Hinge assy. with pin made of galv. steel but with groove in pin for retaining ring DIN 6799 RS 4	216 - 9012
Hinge assy. with pin made of DELRIN.	216 - 9007

*Please order retaining ring separately 800 - 0137

(Stainless steel version see page 7 - 160)