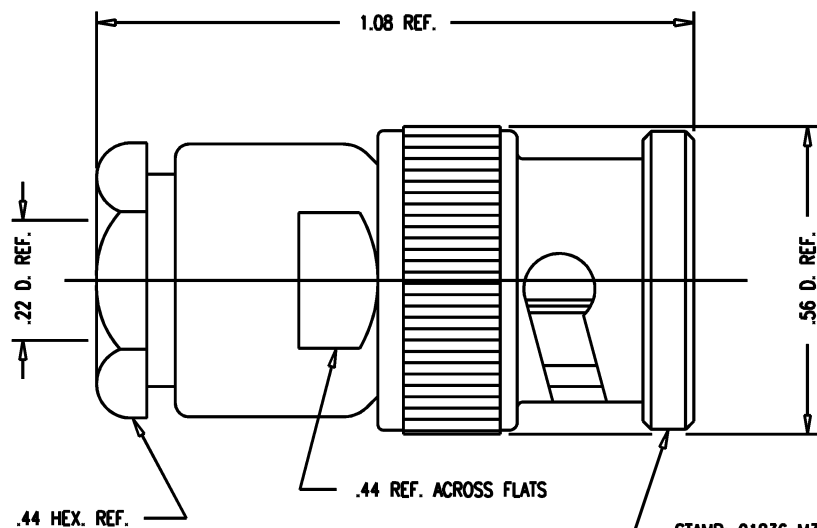


DASH NO.	M CODE	MADE FROM
----------	--------	-----------

# GSD

M39012/16-0101

REVISIONS	
ISSUE	CHANGES
4	CN 33276 E REDRAWN WJM 08/07/91



STAMP: 91836 M39012/16-0101  
KC-59-544 XX XX

DATE CODE

**NOTES:**

- FOR USE WITH RG-58, 142, 223 & 400/U CABLE GROUPS.
- FOR CABLING INSTRUCTIONS SEE CP-1050.
- INTERFACE PER MIL-STD-348, FIG. 301-1.
- MATERIALS:  
INSULATOR: TEFLON, ASTM-D-1457  
GASKETS: SILICONE RUBBER, ZZ-R-765  
SPRING WASHER: BER. COPPER, ASTM-B-196  
ALL OTHER METAL PARTS: BRASS, ASTM-B16
- FINISHES:  
CENTER CONTACT: HARD GOLD PLATE, PER MIL-G-45204  
ALL OTHER METAL PARTS: SILVER PLATE, PER QQ-S-365
- ELECTRICAL CHARACTERISTICS:  
NOMINAL IMPEDANCE: 50 OHMS  
WORKING VOLTAGE: 500 VRMS  
FREQUENCY RANGE: DC TO 4 GHz.

WJM1264

SCALE 4:1	
APPROX SURFACE AREA	
KC-59-544	
USED ON	
REF:	
PLUG, BNC	
DRAWN WJM	DATE 08/07/91
DESIGN MJB	DATE 08/22/91
APPR.	DATE

**KINGS**  
ELECTRONICS CO., INC.  
TUCKAHOE, NEW YORK 10707

M39012/16-0101

# GSD