

HIGH ENERGY - EXTENDED PULSE TVS
APPLICATIONS

- ✓ Remote DC Power Supply, Base Station & Microwave Protection
- ✓ MIL-STD-1275 Power Bus Protection
- ✓ Electric Drive Motors & Controls
- ✓ Mobile Electronics Operating in Harsh Environments

IEC COMPATIBILITY (EN61000-4)

- ✓ 61000-4-5 (Surge): 95A, 8/20 μ s Level 3 (Line-Ground) & Level 4 (Line-Line)

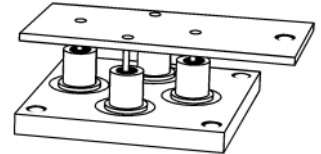
FEATURES

- ✓ *Meets MIL-STD-1275 Military Specification*
- ✓ 10 & 30 kilowatts Peak Pulse Power per Line (tp=1ms)
- ✓ Each Device 100% Tested
- ✓ High Average (DC) Power Dissipation
- ✓ Superior Heat Dissipation Capability
- ✓ Small Package Size

MECHANICAL CHARACTERISTICS

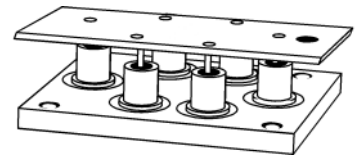
- ✓ Hermetically Sealed Sub-Assemblies
- ✓ Weight 38 grams - GPZ532 & 65 grams - GPZ1275 (Approximate)
- ✓ Flammability Rating UL 94V-0
- ✓ Device Marking: Logo, Date Code & Part Number

10,000 WATTS



GPZ532

30,000 WATTS



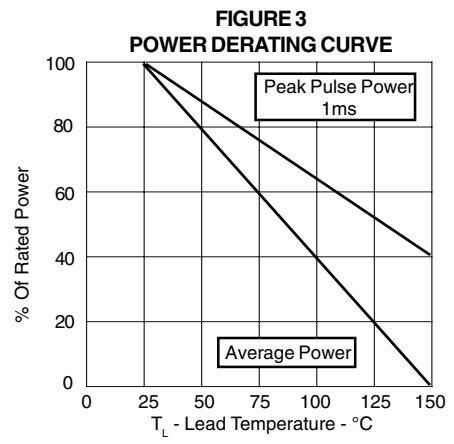
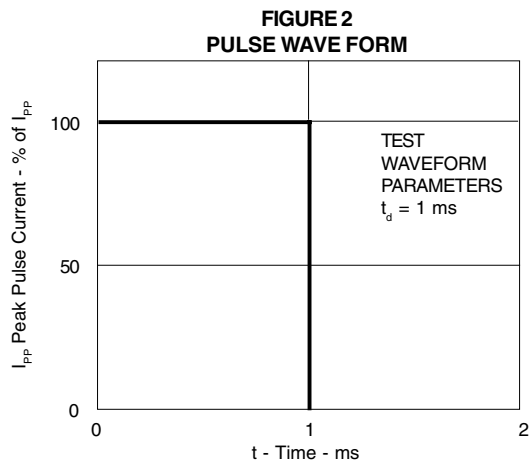
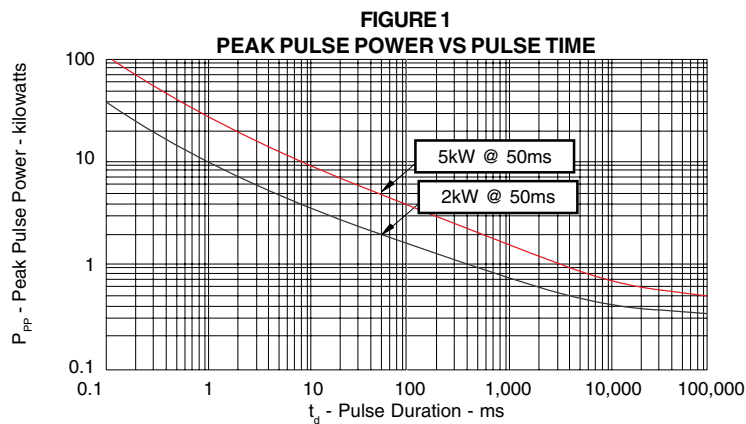
GPZ1275

MAXIMUM RATINGS @ 25°C Unless Otherwise Specified			
PARAMETER	SYMBOL	VALUE	UNITS
Peak Pulse Power (tp = 1ms) - See Figure 1	P _{PP}	10 & 30	kilowatts
Operating Temperature	T _J	-55°C to 150°C	°C
Storage Temperature	T _{STG}	-55°C to 150°C	°C
Steady State Power Dissipation @ 25°C (derate 2.33W/°C)	T _A	350	Watts

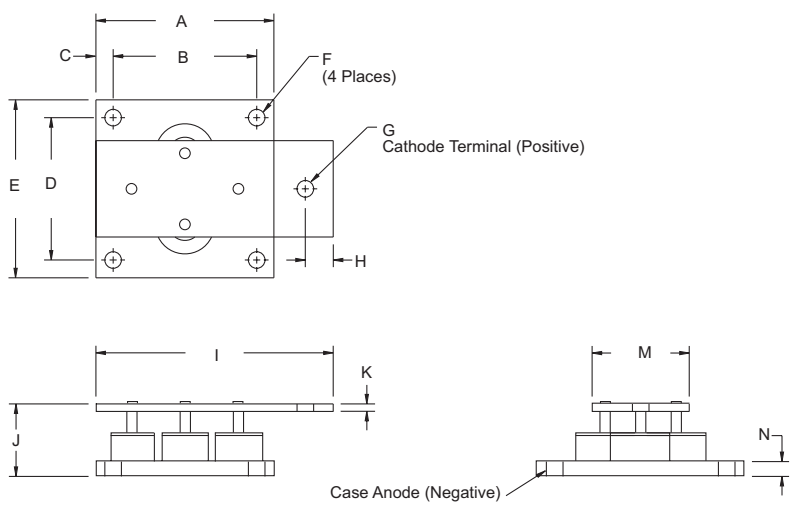
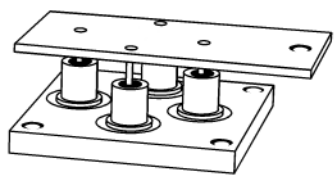
DEVICE CHARACTERISTICS

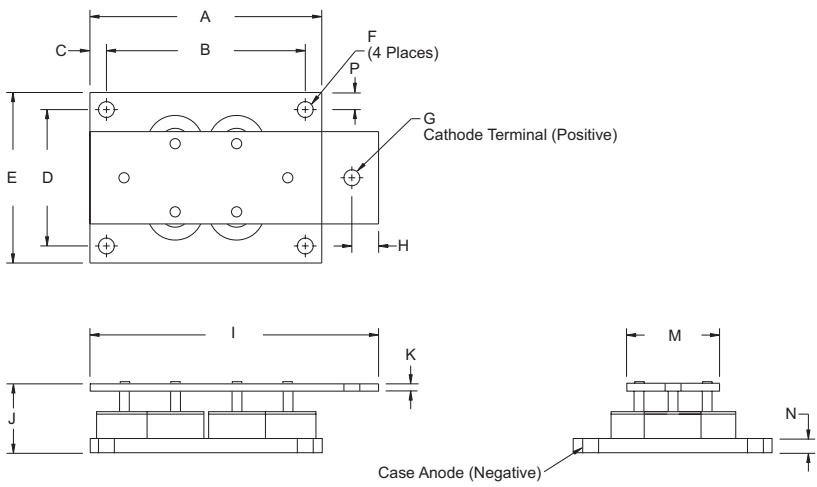
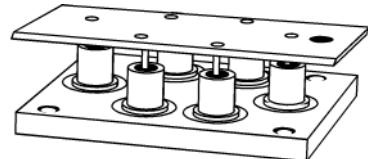
ELECTRICAL CHARACTERISTICS PER LINE @ 25°C Unless Otherwise Specified						
PART NUMBER (See Note 1)	RATED STAND-OFF VOLTAGE V_{WM} VOLTS	MINIMUM BREAKDOWN VOLTAGE		MAXIMUM CLAMPING VOLTAGE (See Fig. 2) @ I_{PPM} V_C VOLTS	MAXIMUM LEAKAGE CURRENT @ V_{WM} I_D μA	MAXIMUM PEAK PULSE CURRENT (See Fig. 2) I_{PPM} AMPS
		$V_{(BR)}$ VOLTS	@ I_T AMPS			
GPZ532	28	32	0.2	40	50	100
GPZ1275	28	32	0.03	55	60	500

Note 1: Maximum $V_F = 3.5V$ @ 100A, 8.3ms (sine wave).



PACKAGE OUTLINE & DIMENSIONS

GPZ532 PACKAGE OUTLINE	GPZ532	
 <p>GPZ532 PACKAGE OUTLINE</p> <p>Diagram showing top, side, and perspective views of the GPZ532 package. Dimensions A through N are indicated. Labels include: F (4 Places), G Cathode Terminal (Positive), and Case Anode (Negative).</p>	 <p>GPZ532</p> <p>Photograph of the GPZ532 package showing its physical structure.</p>	
DIMENSIONS		
DIM	MILLIMETERS	INCHES
A	38.10 TYP	1.50 TYP
B	30.48 TYP	1.20 TYP
C	3.81 TYP	0.15 TYP
D	30.48 TYP	1.20 TYP
E	38.10 TYP	1.50 TYP
F	3.56 DIA	0.14 DIA
G	3.56 DIA	0.14 DIA
H	3.81	0.15
I	50.80	2.00
J	17.02 MAX	0.67 MAX
K	1.57	0.062
M	20.60	0.812
N	3.18	0.125

GPZ1275 PACKAGE OUTLINE	GPZ1275	
 <p>GPZ1275 PACKAGE OUTLINE</p> <p>Diagram showing top, side, and perspective views of the GPZ1275 package. Dimensions A through P are indicated. Labels include: F (4 Places), G Cathode Terminal (Positive), and Case Anode (Negative).</p>	 <p>GPZ1275</p> <p>Photograph of the GPZ1275 package showing its physical structure.</p>	
DIMENSIONS		
DIM	MILLIMETERS	INCHES
A	51.12 TYP	2.04 TYP
B	44.45 TYP	1.75 TYP
C	3.68 TYP	0.145 TYP
D	30.48 TYP	1.20 TYP
E	38.10 TYP	1.50 TYP
F	3.56 DIA	0.14 DIA
G	5.97 DIA	0.235 DIA
H	5.97	0.235
I	64.52	2.54
J	17.02 MAX	0.670 MAX
K	1.57	0.062
M	20.62	0.812
N	3.18	0.125
P	3.68	0.150

Outline & Dimensions: Rev 0 - 4/02, 06034

COPYRIGHT © ProTek Devices 2005

SPECIFICATIONS: ProTek reserves the right to change the electrical and or mechanical characteristics described herein without notice (except JEDEC).

DESIGN CHANGES: ProTek reserves the right to discontinue product lines without notice, and that the final judgement concerning selection and specifications is the buyer's and that in furnishing engineering and technical assistance, ProTek assumes no responsibility with respect to the selection or specifications of such products.

ProTek Devices
 2929 South Fair Lane, Tempe, AZ 85282
 Tel: 602-431-8101 Fax: 602-431-2288
 E-Mail: sales@protekdevices.com
 Web Site: www.protekdevices.com