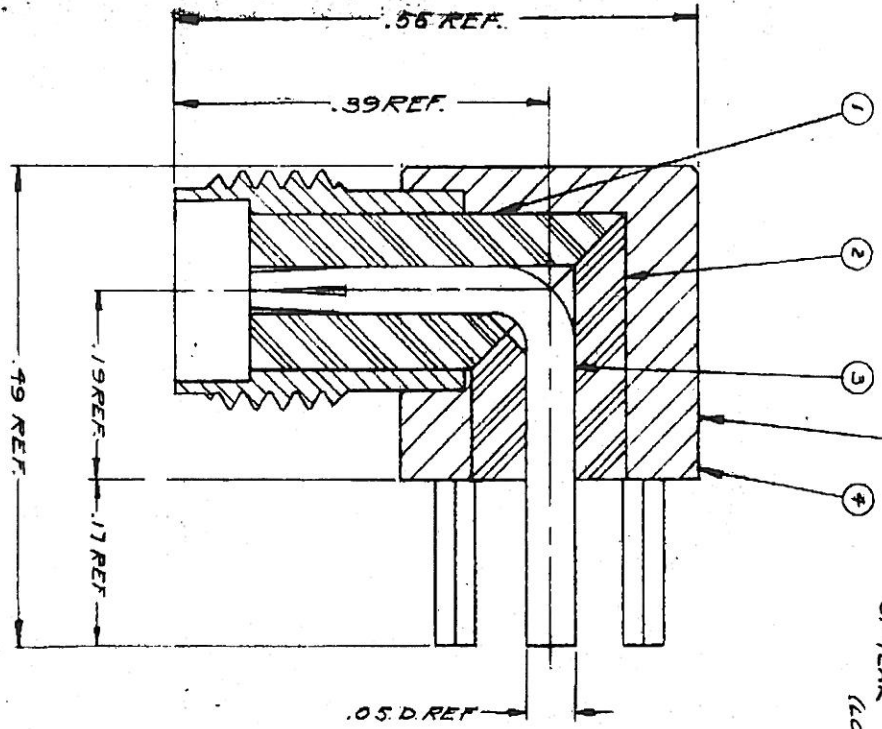
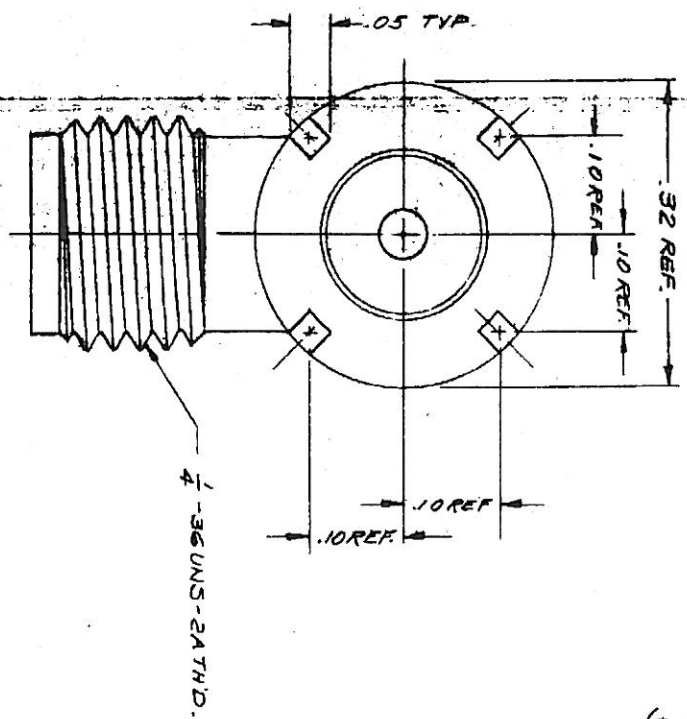


STAMP: KINGS 877-21-7-MAG
 WEEK XX XX
 OF YEAR LAST TWO DIGITS OF YEAR
 (LOT DATE CODE)



NOTES:



- OTHERWISE SPECIFIED:
- 1. DIMENSIONS: FRACTIONS & 2 PLACE DECIMALS ± .010
 - 2. HOLE DIMENSIONS ± .004
 - 3. ANGLES ± 0°30'
 - 4. CONCENTRICITY OF ANY 2 DIAMETERS MAY EXCEED HALF THE SUM OF THEIR TOLERANCES.
 - 5. REMOVE ALL BURRS, BREAK SHARP EDGES .005 MAX.
 - 6. NO FILLETS PERMITTED.
 - 7. SURFACE ROUGHNESS BY MICROFINISHES R40 MAX.
 - 8. ALL DIMENSIONS PRIOR TO PLATING.
 - 9. ALL PLATING IN ACCORDANCE WITH XEN 100X.

3. MARK PACKAGE:

94756
 414-2952-002
 877-21-7-MAG
 MFG 91836
 KINGS ELECTRONICS CO INC
 XXX X (LOT DATE CODE)
 4. SAME AS 877-21 EXCEPT SPECIAL MARKING.

877-21-7-MAG (SHEET 1 OF 2)

REVISIONS	
ISSUE	CHANGES
0	ER 20511 PNS 11 MAR 80
1	CN 27898 D CT 24 MAR 86
2	CN 32430 A LI 9 AUG 90

SCALE: 8:1
 S-D

S-D (SHEET 1 OF 2)

DRG 414-2952 REV 0.
 SMA RC. ANGLE
 RECEIPTACLE
 DATE 6 MAR 80
 BY CANK BD
 KING'S ELECTRONICS CO INC
 11/11/80
 877-21-7-MAG
 (SHEET 1 OF 2)

