



TAI-SAW TECHNOLOGY CO., LTD.

No. 3, Industrial 2nd Rd., Ping-Chen Industrial District,
Taoyuan, 324, Taiwan, R.O.C.

TEL: 886-3-4690038 FAX: 886-3-4697532

E-mail: tstsales@mail.taisaw.com Web: www.taisaw.com

Approval Sheet For Product Specification

Issued Date: Sep, 12, 2007

Product Name: SAW Filter 1586.36 MHz SMD 3.0X3.0 mm

TST Parts No.: TA0699A

Customer Parts No.: _____

Company: _____
Division: _____
Approved by : _____
Date: _____

Checked by: _____ Bob Chau

Approval by: _____ Francis Chen

Date: _____ 9, 12, 2007



TAI-SAW TECHNOLOGY CO., LTD.

No. 3, Industrial 2nd Rd., Ping-Chen Industrial District,
Taoyuan, 324, Taiwan, R.O.C.

TEL: 886-3-4690038 FAX: 886-3-4697532

E-mail: tstsales@mail.taisaw.com Web: www.taisaw.com

SAW Filter 1586.36 MHz

MODEL NO.:TA0699A

REV. NO.:2

A. MAXIMUM RATING:

1. Input Power Level: 10 dBm
2. DC Voltage : 3V
3. Operating Temperature: -40°C to +85°C
4. Storage Temperature: -50°C to +95°C

RoHS Compliant
Lead free
Lead-free soldering

B. ELECTRICAL CHARACTERISTICS:

Terminating source impedance (differential) : $Z_s = 150 \Omega // 33 \text{ nH}$

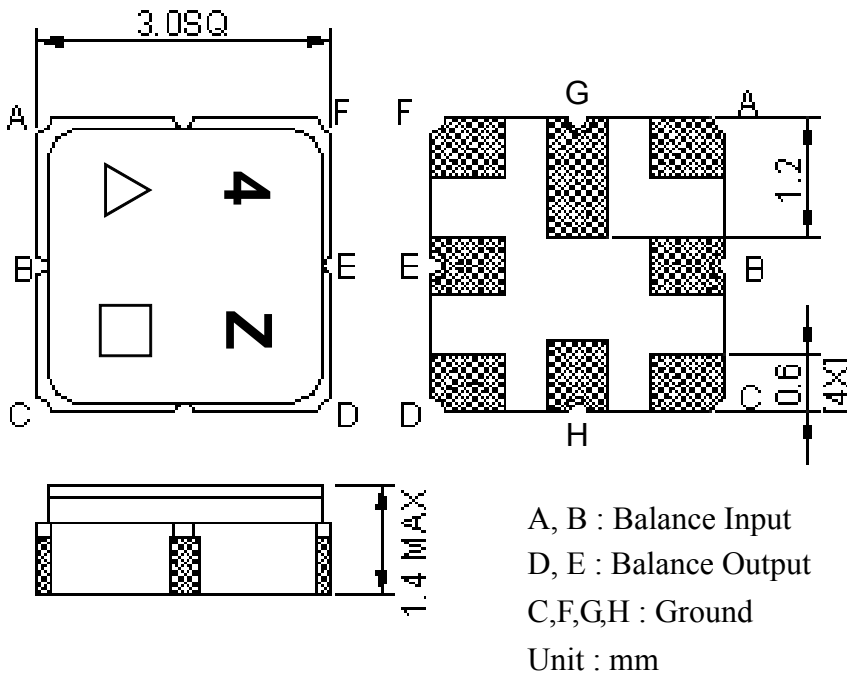
Terminating load impedance (differential) : $Z_L = 150 \Omega // 33 \text{ nH}$

Item	Unit	Min.	Type.	Max.	Note
Center Frequency Fc	MHz	-	1586.36	-	-
Bandwidth at -2 dB	MHz	40	59	-	-
Insertion Loss in 1566.36~1606.36 MHz	dB	-	2.7	5	-
Amplitude ripple (1566.36 MHz ~ 1606.36 MHz)	dB	-	1	2	-
Phase error (1566.36 MHz ~ 1606.36 MHz) (3)	deg	-	3.5	6	-
I/O VSWR (1566.36 MHz ~ 1606.36 MHz)		-	2.1	2.5	-
Attenuation (1)					
50 ~ 1504.3 MHz	dB	46	50	-	-
1668.42 ~ 1810.5 MHz	dB	46	53	-	-
1810.5 ~ 4250 MHz	dB	35	41	-	-
4250 ~ 6000 MHz	dB	30	38	-	-

Notes :

- (1) The amplitude reference is insertion loss at Fc.
- (2) The amplitude ripple is defined as the max. level – min. level over any 30 MHz block of the given bandwidth.
- (3) The phase error is measured over any 30 MHz block of the given bandwidth.

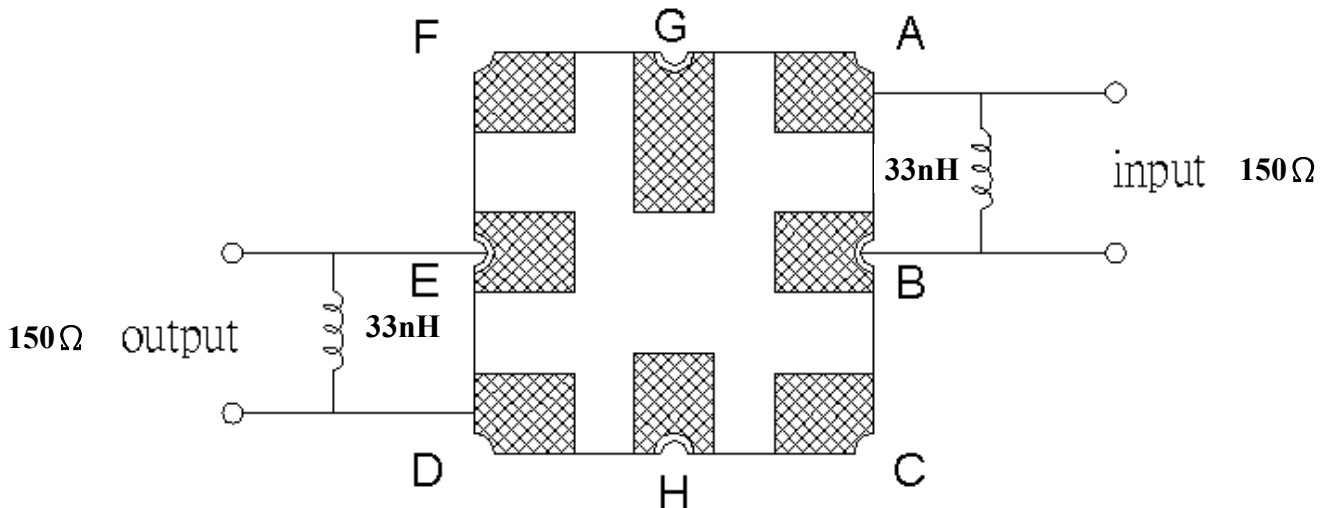
C.OUTLINE DRAWING:



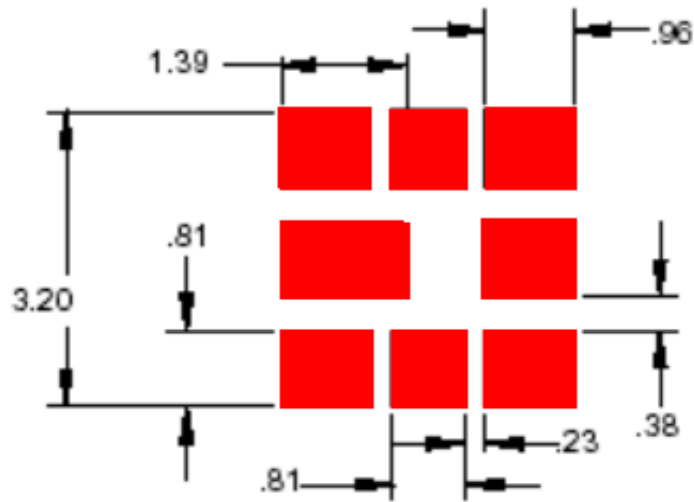
△ : Year Code (2006->6, ..., 2009->9)

□ : Date Code (Follow the table from planner each year)

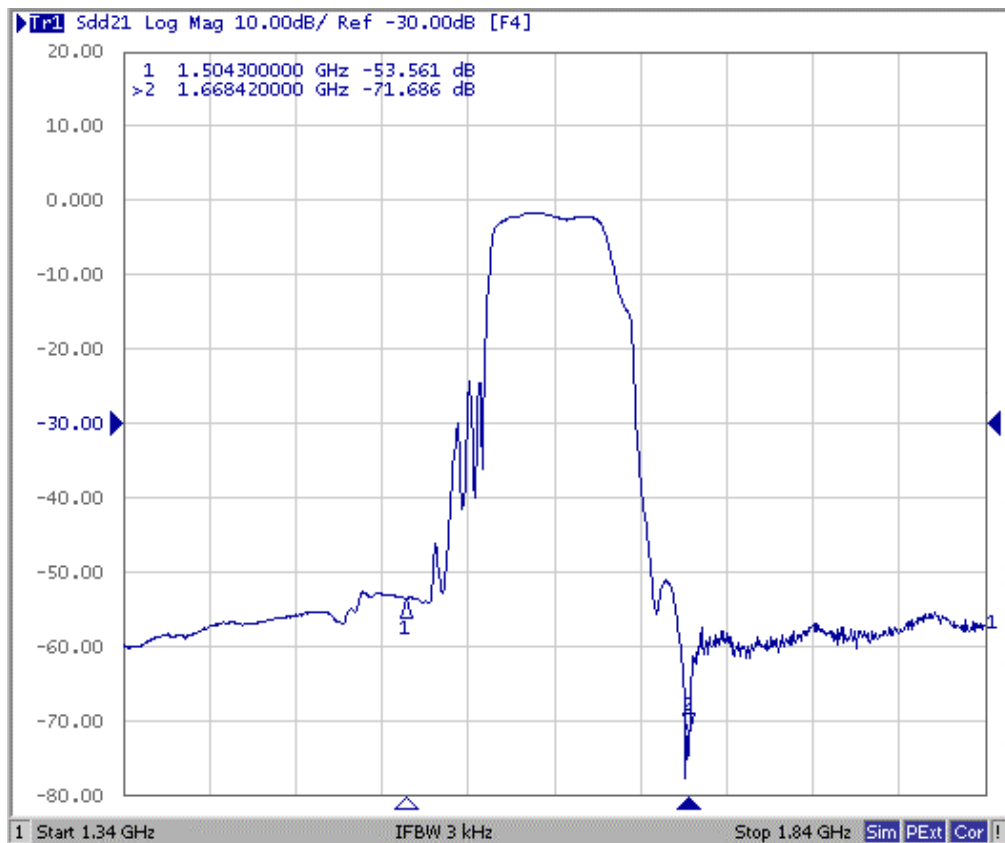
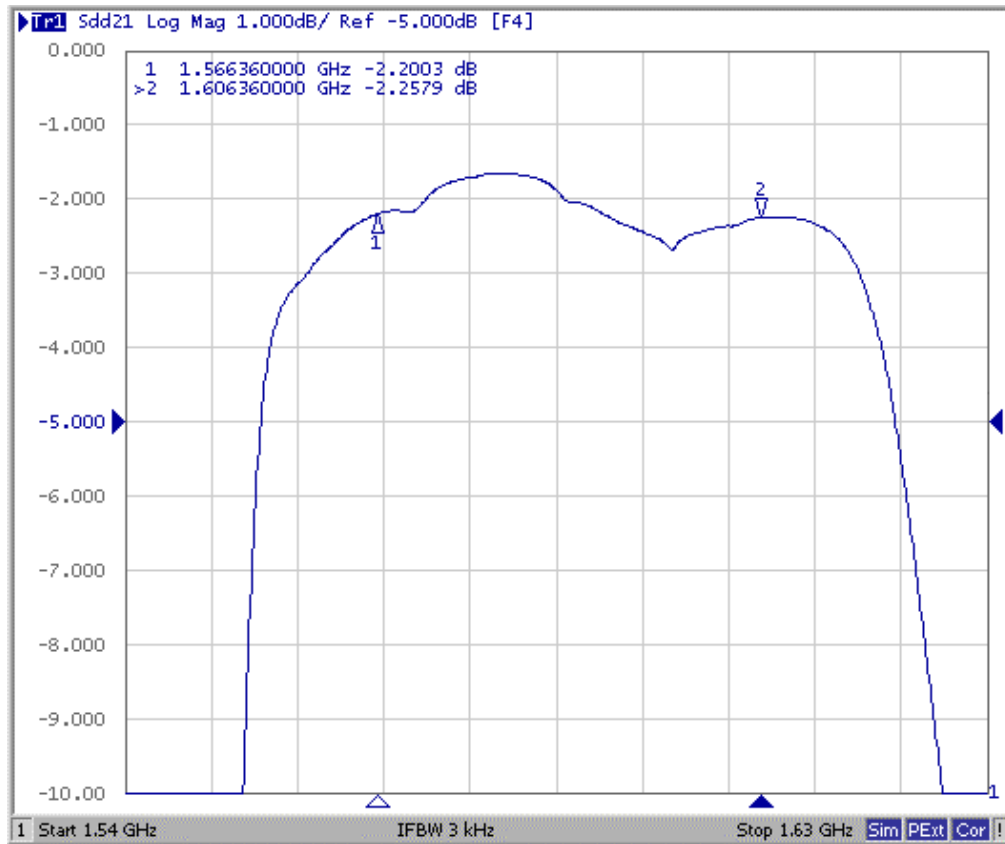
D. MEASUREMENT CIRCUIT:

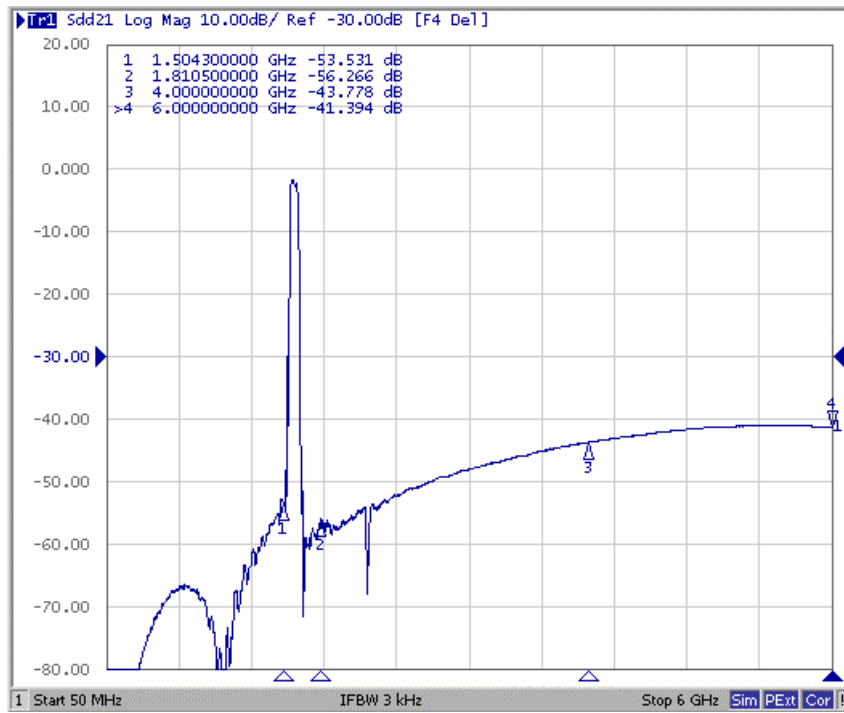


E. PCB Footprint:



F. Frequency Characteristics :

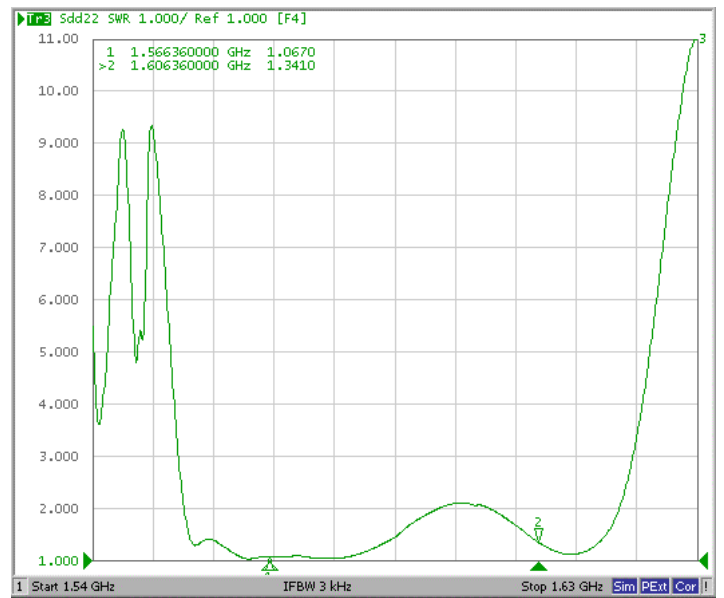
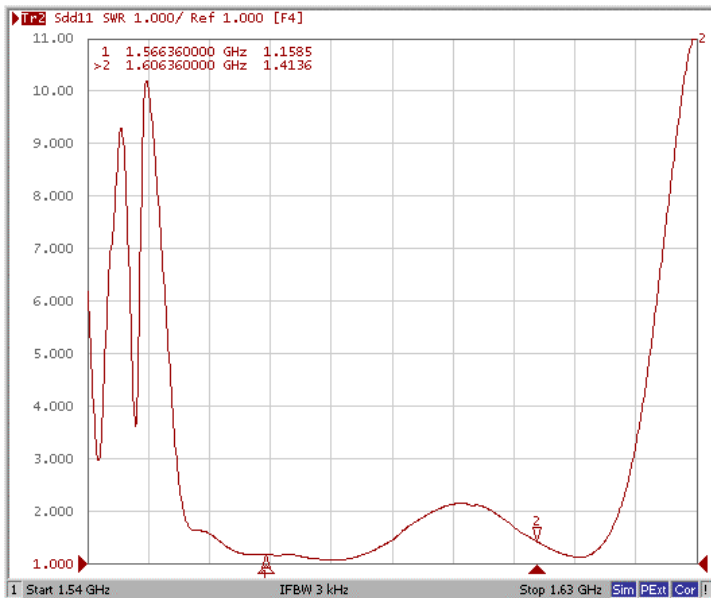




Reflection Functions :

S11

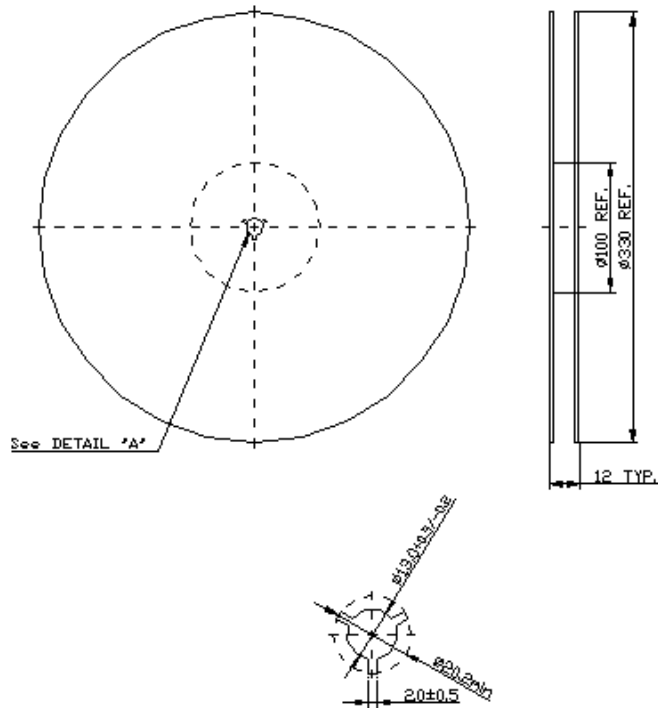
S22



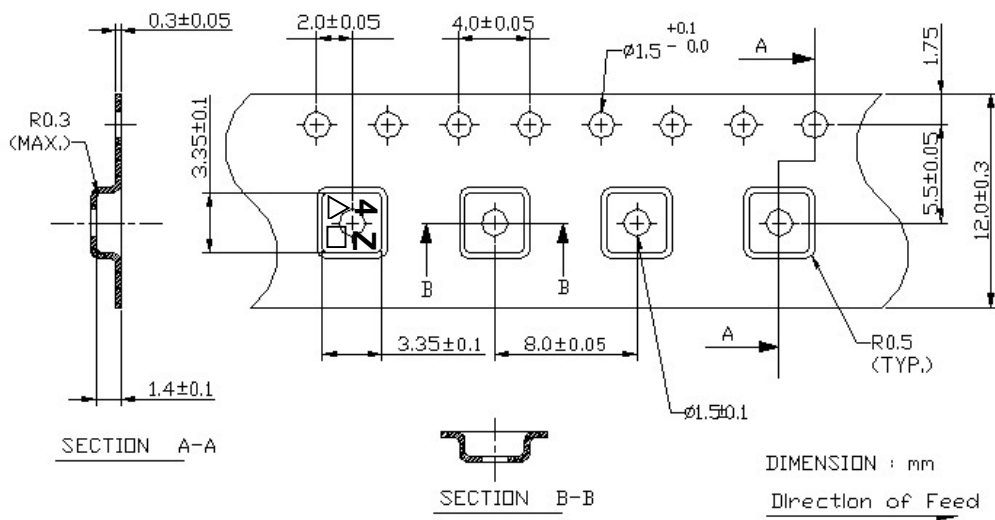
G. PACKING:

1. REEL DIMENSION

(Reel Count : 7''=1000 ; 13''=3000)



2. TAPE DIMENSION



H. RECOMMENDED REFLOW PROFILE :

