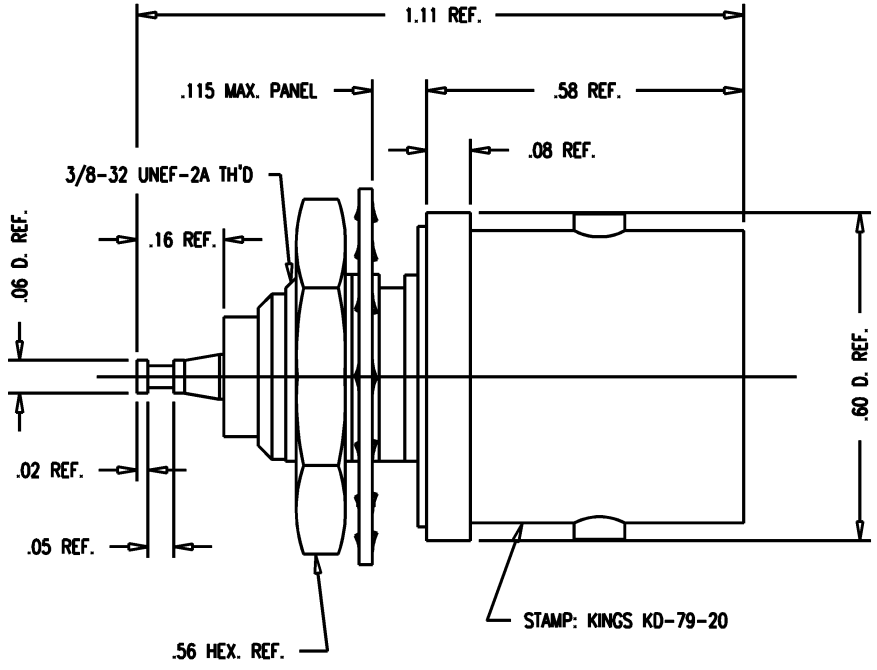


DASH NO.	M CODE	MADE FROM
----------	--------	-----------

GSD

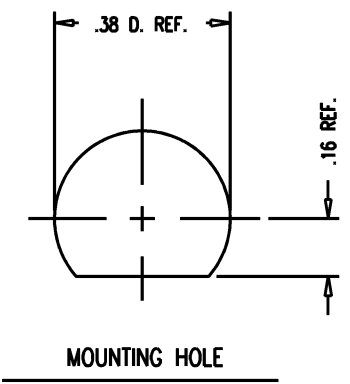
KD-79-20

REVISIONS	
ISSUE	CHANGES
3	CN 20660 E GJG 05/15/80



NOTES:

- MATERIALS:**
 INSULATOR-TEFLON, ASTM-D-1457
 GASKET-SILICONE RUBBER, ZZ-R-765
 LOCKWASHER-PHOSPHOR BRONZE, QQ-B-750
 CENTER CONTACT-BER. COP., ASTM-B-196
 ALL OTHER METAL PARTS-BRASS, QQ-B-626
- FINISHES:**
 CENTER CONTACT-SILVER PLATE PER QQ-S-365
 ALL OTHER METAL PARTS-KINGS TARNISH RESISTANT FINISH (TR-5)
- ELECTRIAL CHARACTERISTICS:**
 NOMINAL IMPEDANCE-50 OHMS
 FREQUENCY RANGE-DC TO 11 GHZ
 WORKING VOLTAGE-1000 VRMS



GSD

SCALE 4:1	
APPROX SURFACE AREA	
USED ON	
REF:	
RECEPTACLE, C	
DRAWN KH	DATE 06/13/91
DESIGN MJB	DATE 06/13/91
APPR.	DATE
 KINGS ELECTRONICS CO., INC. TUCKAHOE, NEW YORK 10707	
KD-79-20	

KAM1207