



# TAI-SAW TECHNOLOGY CO., LTD.

No. 3, Industrial 2nd Rd., Ping-Chen Industrial District,  
Taoyuan, 324, Taiwan, R.O.C.

TEL: 886-3-4690038 FAX: 886-3-4697532

E-mail: [tstsales@mail.taisaw.com](mailto:tstsales@mail.taisaw.com) Web: [www.taisaw.com](http://www.taisaw.com)

## Approval Sheet For Product Specification

Issued Date: Nov, 28, 2003

Product Name: SAW Filter 243 MHz SMD 5.0x7.0 mm

TST Parts No.:TB0208A

Customer Parts No.: \_\_\_\_\_

Company: _____
Division: _____
Approved by : _____
Date: _____

Checked by: \_\_\_\_\_ Bob Chau

Approval by: \_\_\_\_\_ Francis Chen

Date: \_\_\_\_\_ Nov, 28, 2003



# TAI-SAW TECHNOLOGY CO., LTD.

No. 3, Industrial 2nd Rd., Ping-Chen Industrial District,  
Taoyuan, 324, Taiwan, R.O.C.

TEL: 886-3-4690038 FAX: 886-3-4697532

E-mail: [tstsales@mail.taisaw.com](mailto:tstsales@mail.taisaw.com) Web: [www.taisaw.com](http://www.taisaw.com)

## SAW Filter 243MHz

MODEL NO.:TB0208A

REV. NO.:1

### A. MAXIMUM RATING:

1. Input Power Level: 10 dBm
2. DC Voltage : 15V
3. Operating Temperature: -25°C to 60°C
4. Storage Temperature: -30°C to 70°C

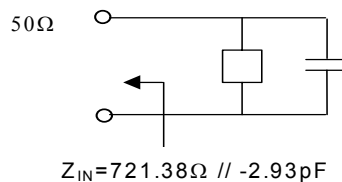
RoHS Compliant  
Lead free  
Lead-free soldering

### B. ELECTRICAL CHARACTERISTICS:

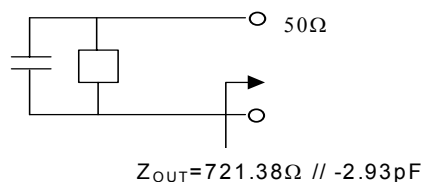
Item	Unit	Min.	Type.	Max.	Note
Center frequency, <b>Fc</b>	MHz	-	243	-	1
Minimum Insertion Loss, ( <b>Fc</b> ±25KHz ) <b>IL</b>	dB	-	3.7	6.0	1
Passband Ripple ( <b>Fc</b> ±25KHz )	dB	-	0.2	1.0	1
Group delay ripple ( <b>Fc</b> ±25KHz ), <b>GD</b>	μs	-	0.5	2.0	1
Attenuation:(Reference level from Min IL)					
<b>Fc</b> - 115 to <b>Fc</b> - 1 MHz	dB	50	63	-	-
<b>Fc</b> - 1 to <b>Fc</b> - 0.6 MHz	dB	42	64	-	-
<b>Fc</b> - 0.6 to <b>Fc</b> - 0.4 MHz	dB	29	68	-	-
<b>Fc</b> + 0.4 to <b>Fc</b> + 0.6 MHz	dB	29	64	-	-
<b>Fc</b> + 0.6 to <b>Fc</b> + 1 MHz	dB	42	63	-	-
<b>Fc</b> + 1 to <b>Fc</b> + 115 MHz	dB	50	55	-	-

Note1. The standard definitions is in JIS C 6703

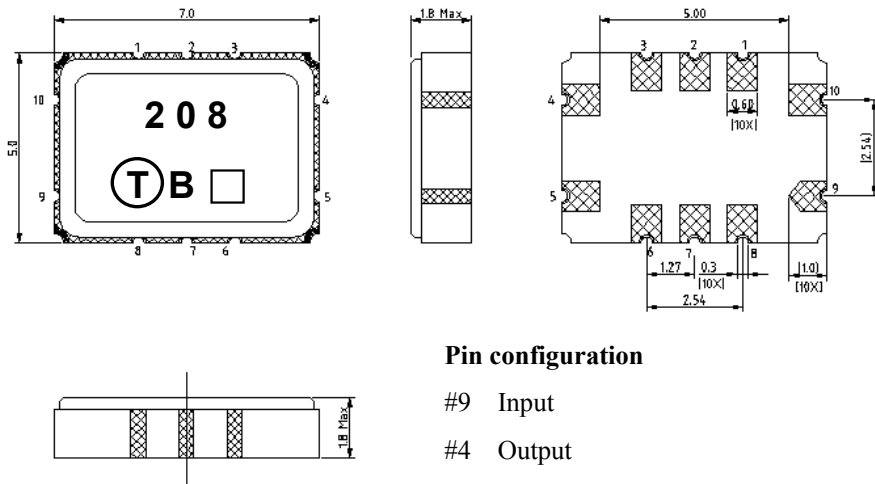
Source impedance



Load impedance



### C. OUTLINE DRAWING:

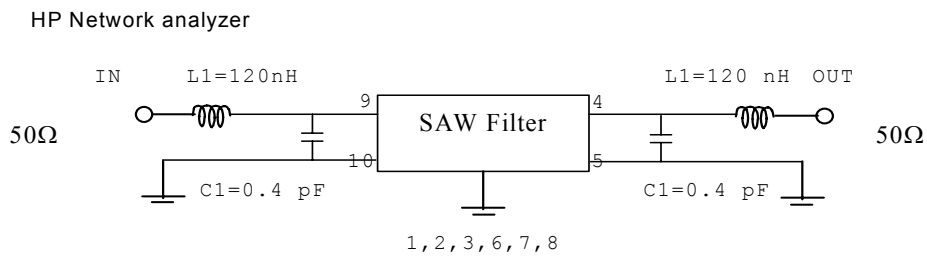


#### Pin configuration

- #9 Input
  - #4 Output
  - #10 Balance input or input ground
  - #5 Balance output or output ground
  - #1,2,3,6,7,8 To be grounded
  - Date code
- Unit mm

### D. MEASUREMENT CIRCUIT:

#### 50 Ohm Test circuit ( single-ended / single-ended )



## E. Frequency Characteristics :

