



TAI-SAW TECHNOLOGY CO., LTD.

No. 3, Industrial 2nd Rd., Ping-Chen Industrial District,
Taoyuan, 324, Taiwan, R.O.C.

TEL: 886-3-4690038 FAX: 886-3-4697532

E-mail: tstsales@mail.taisaw.com Web: www.taisaw.com

Approval Sheet For Product Specification

Issued Date: Oct., 18, 2004

Product Name: SAW Filter 140 MHz SMD 5.0x7.0 mm

TST Parts No.:TB0217A

Customer Parts No.:_____

Company: _____
Division: _____
Approved by : _____
Date: _____

Checked by: _____ Bob Chau

Approval by: _____ Francis Chen

Date: _____ 10, 18, 2004



TAI-SAW TECHNOLOGY CO., LTD.

No. 3, Industrial 2nd Rd., Ping-Chen Industrial District,
Taoyuan, 324, Taiwan, R.O.C.

TEL: 886-3-4690038 FAX: 886-3-4697532

E-mail: tstsales@mail.taisaw.com Web: www.taisaw.com

SAW Filter 140MHz

MODEL NO.:TB0217A

REV. NO.:2

A. MAXIMUM RATING:

1. Input Power Level: 10 dBm
2. DC Voltage : 5V
3. Operating Temperature: -40°C to +85°C
4. Storage Temperature: -50°C to +95°C

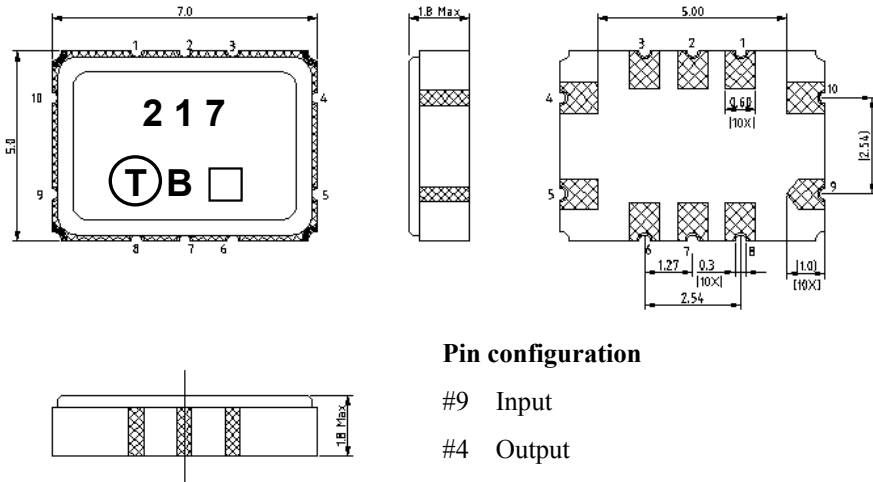
RoHS Compliant
Lead free
Lead-free soldering

B. ELECTRICAL CHARACTERISTICS:

Item	Unit	Min.	Type.	Max.	Note
Center frequency, Fc	MHz	-	140	-	-
Minimum Insertion Loss, (Fc ±20KHz) IL	dB	-	3.0	6.0	-
3 dB bandwidth, BW-3	KHz	40	100	-	1
Passband Ripple (Fc ±20KHz)	dB	-	0.1	3.0	-
50 dB bandwidth, BW-50	KHz	-	390	450	-
Group delay ripple (Fc ±20KHz), GD	μs	-	1	12	-
Temperature coefficient of frequency TCf	ppm/C ²	-	-0.032	-	-

Note1. Considering -20 KHz frequency shift from -40°C to +85°C

C. OUTLINE DRAWING:

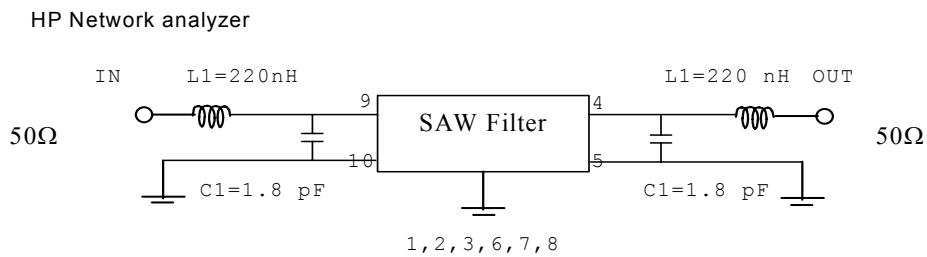


Pin configuration

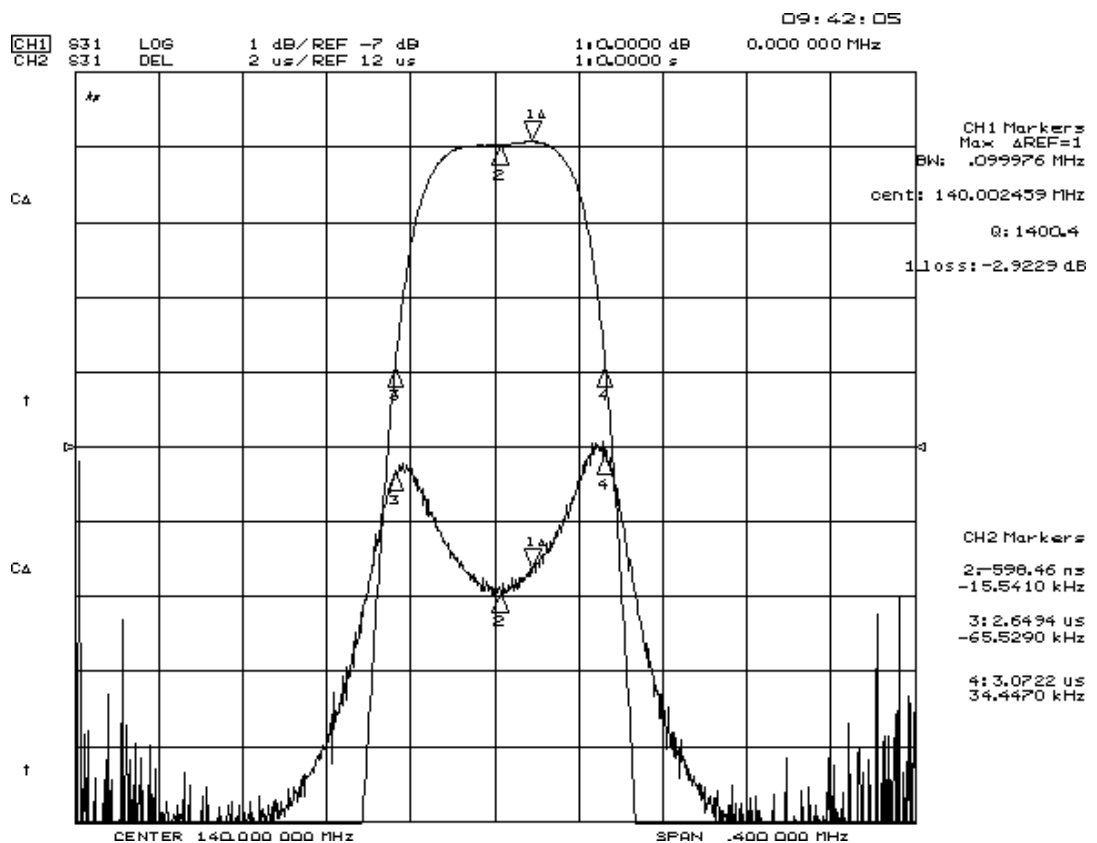
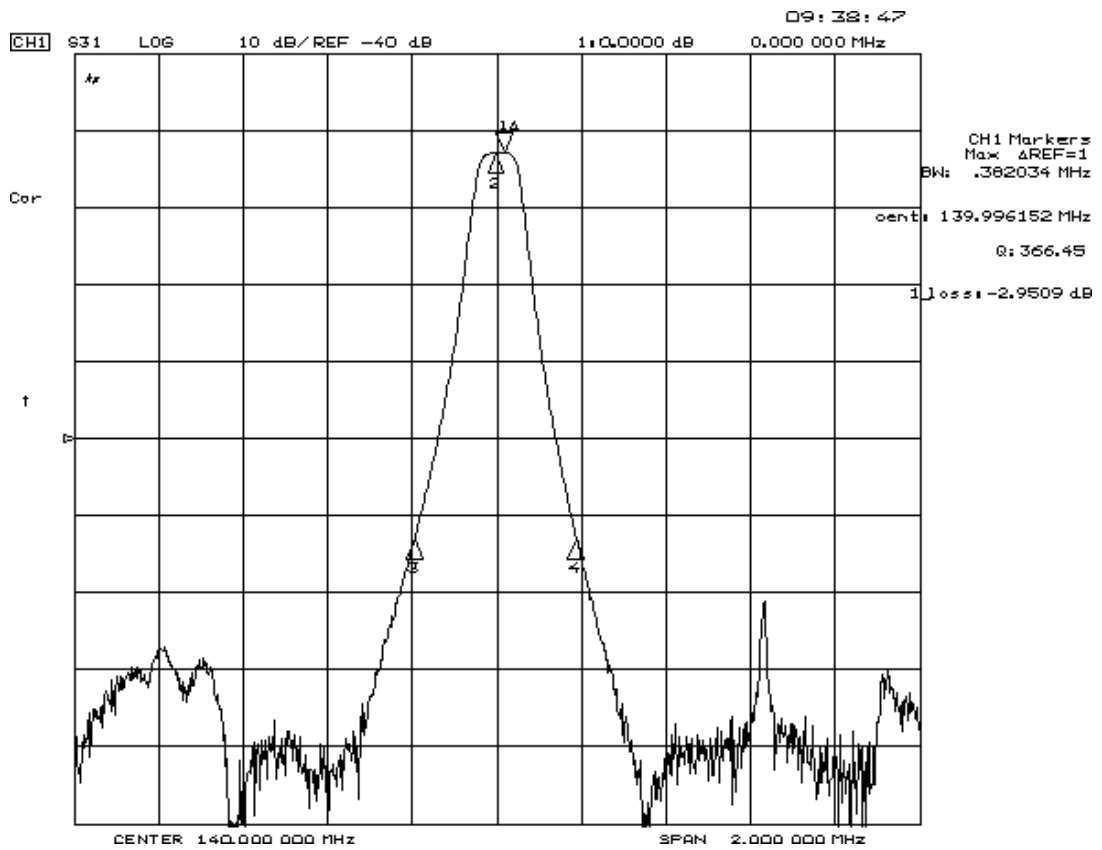
- #9 Input
- #4 Output
- #10 Balance input or input ground
- #5 Balance output or output ground
- #1,2,3,6,7,8 To be grounded
- Date code
- Unit mm

D. MEASUREMENT CIRCUIT:

50 Ohm Test circuit (single-ended / single-ended)

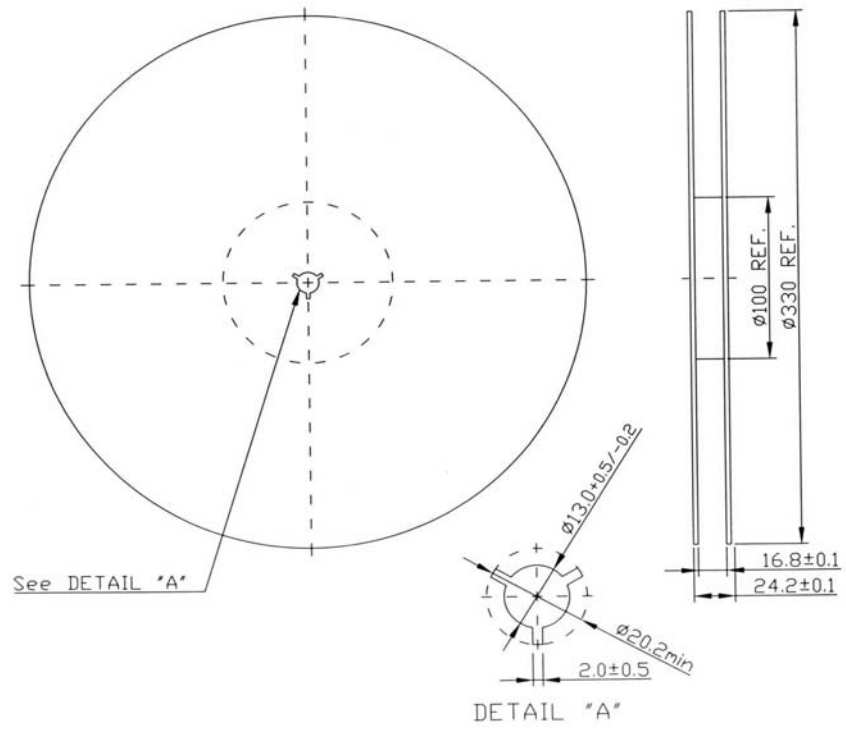


E. Frequency Characteristics :



F. PACKING:

1. REEL DIMENSION



2. TAPE DIMENSION

