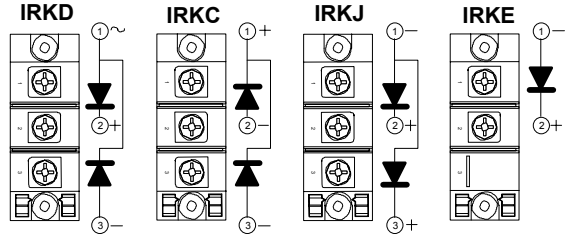


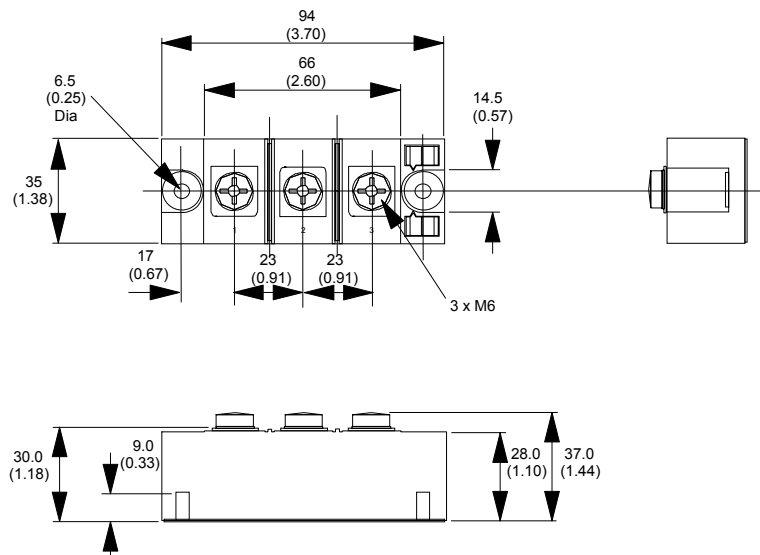
Case Style :  
Triple Flatop



MAXIMUM RATINGS (T <sub>j</sub> = 25 °C unless stated otherwise) * Insert "D" "C" "J" or "E" for circuit configuration							
Parameter	Symbol	IRK (*) 196-04	IRK (*) 196-08	IRK (*) 196-12	IRK (*) 196-14	IRK (*) 196-16	Unit
Repetitive Peak Reverse Voltage	V <sub>RRM</sub>	400	800	1200	1400	1600	Volt
Maximum RMS On-State Current	I <sub>F(RMS)</sub>	305					Amp
Maximum Average On-State Current	I <sub>F(AV)</sub>	195 at TC=100°C					Amp
Peak Forward Surge Current 8.3 ms	I <sub>FSM</sub>	4980					Amp
Maximum I <sup>2</sup> T for Fusing	I <sup>2</sup> T	103					A <sup>2</sup> /S
Maximum Storage Temperature Range	T <sub>(STG)</sub>	-40 to +150					°C
Maximum Junction Temperature Range	T <sub>j</sub>	-40 to +150					°C

ELECTRICAL CHARACTERISTICS at 25 °C Maximum Unless Stated Otherwise			Value			Unit
Parameter	Symbol	Condition	Min	Typ	Max	
Maximum Forward Voltage	V <sub>FM</sub>				1.38	Volt
Repetitive Peak Off- State Current at TC=150°C	I <sub>RRM</sub>	V <sub>R</sub> = V <sub>RRM</sub>			20.0	mA
Thermal Resistance (Junction to Case)	R <sub>TH (J-C)</sub>				0.20	°C/W
Mounting Torque	M <sub>T</sub>				6.0	NM
Weight	Wt				200	grms

### Mechanical Dimensions



Third Angle Projection