

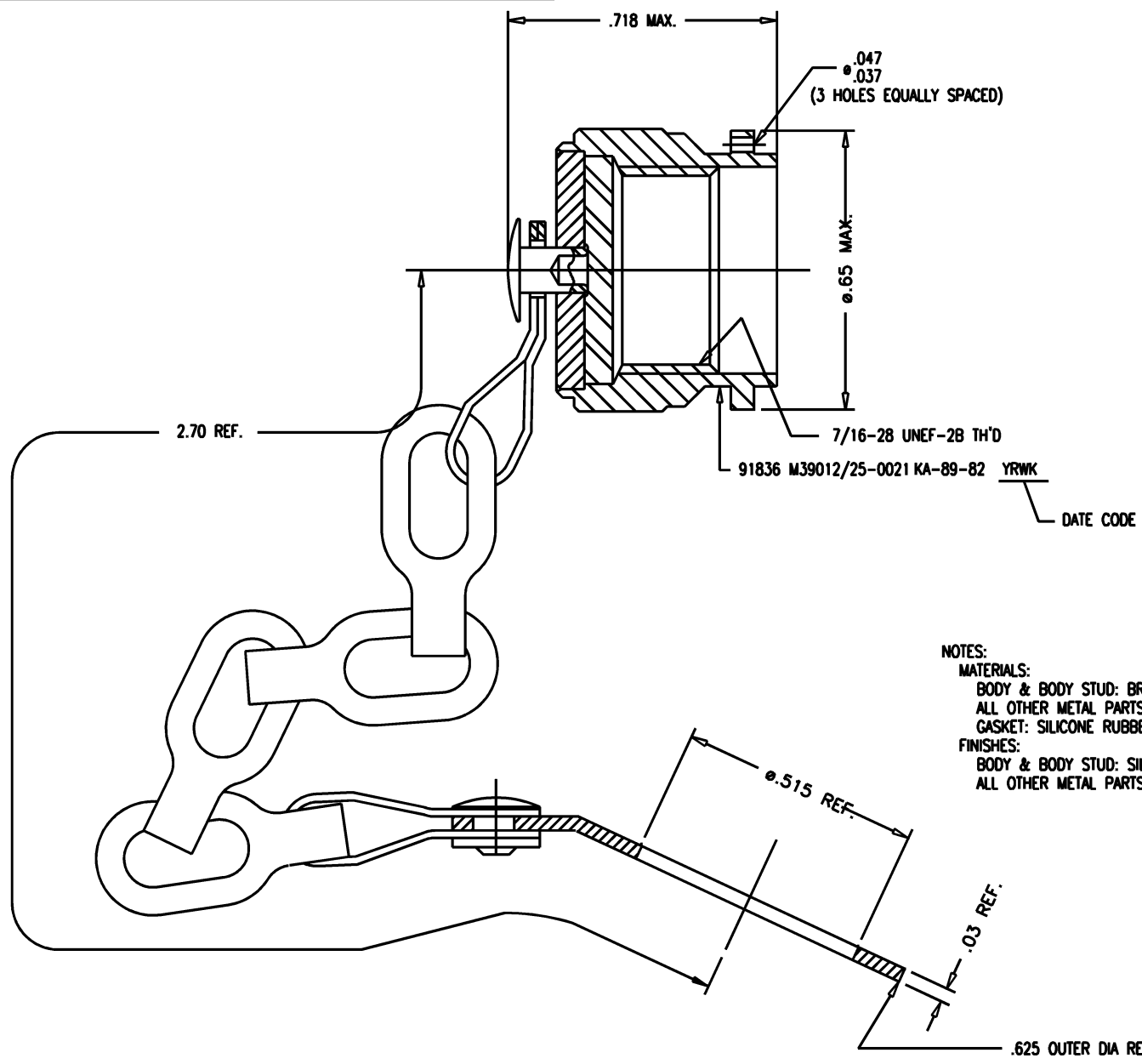
DASH NO.	M CODE	MADE FROM
----------	--------	-----------

GSD

M39012/25-0021

REVISIONS

ISSUE	CHANGES
0	ER 35278 TK 01/11/94
1	CN 38663 C BDH 09/19/02
2	CN 40029 C HVN 08/17/07



NOTES:
 MATERIALS:
 BODY & BODY STUD: BRASS, ASTM-B-16
 ALL OTHER METAL PARTS: STAINLESS STEEL, 302 OR 303
 GASKET: SILICONE RUBBER, A-A-59588
 FINISHES:
 BODY & BODY STUD: SILVER PLATE PER ASTM-B-700
 ALL OTHER METAL PARTS: PASSIVATE PER AMS-2700

SCALE	4:1
APPROX SURFACE AREA	KA-89-82
USED ON	
REF:	CAP & CHAIN, TNC, M
DRAWN	TK DATE 01/11/94
DESIGN	TK DATE 01/11/94
APPR.	VLS DATE 01/12/94

A Winchester Electronics Company

M39012/25-0021

GSD