

**Specification Status: Preliminary**

**Maximum Electrical Rating**

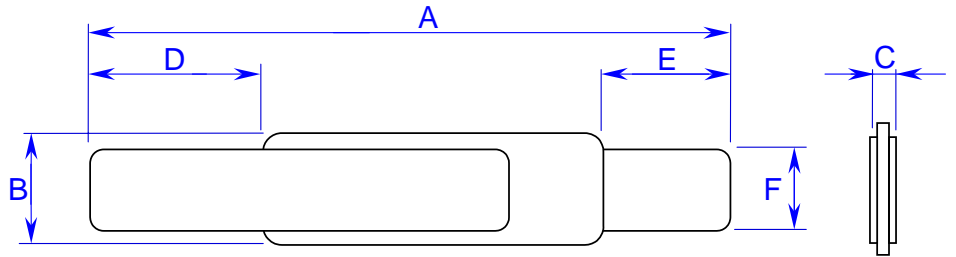
**Operating Voltage: 12Vdc**  
**Interrupt Current: 100A**

Leads: Nickel  
0.125mm nominal thickness

Tape: None

Solder: Lead-free

Marking: None



**TABLE I. DIMENSIONS:**

	A		B		C		D		E		F	
	MIN	MAX	MIN	MAX	MIN	MAX	MIN	MAX	MIN	MAX	MIN	MAX
mm:	23.0	24.5	2.9	3.1	---	0.7	5.2	7.5	4.3	5.7	2.4	2.6
in*:	(0.91)	(0.96)	(0.11)	(0.12)	--	(0.03)	(0.20)	(0.30)	(0.17)	(0.22)	(0.09)	(0.10)

\*Rounded off approximation

**TABLE II. PERFORMANCE RATINGS: As measured in Mueller Kelvin Clips model BU-75K.**

I HOLD	CURRENT TRIP LIMITS								TIME TO TRIP		REFERENCE RESISTANCE		ONE-HOUR POST-TRIP RESISTANCE		TRIPPED-STATE POWER DISSIPATION
	AMPS 25°C HOLD		AMPS AT 0°C		AMPS AT 25°C		AMPS AT 60°C		AMPS AT 80°C		SECONDS AT 25°C, 8.75A		OHMS AT 25°C		WATTS AT 25°C, 12V
	HOLD	TRIP	HOLD	TRIP	HOLD	TRIP	HOLD	TRIP	HOLD	TRIP	MIN	MAX	MIN	MAX	MAX
1.75	2.4	5.6	1.75	4.2	0.8	2.0	---	---	---	5	0.017	0.031	0.017	0.062	1.4

Agency Recognitions:  
Reference Documents:  
Precedence:  
Effectivity:  
CAUTION:

UL, TUV, CSA  
PS300  
This specification takes precedence over documents referenced herein.  
Reference documents shall be the issue in effect on the date of invitation for bid.  
Operation beyond the rated voltage or current may result in rupture, electrical arcing or flame.

**Materials Information:**

**ROHS Compliant**

Directive 2002/95/EC  
Compliant

**ELV Compliant**

Directive 2000/53/EC  
Compliant

**Pb-Free**

