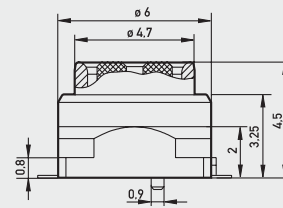


2104.99.0030.003

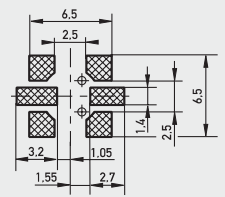
Straight female antenna switch

All RF switches presented in this brochure are developed by IMS, incorporating many years of experience in RF technology. They form a part of our standard components programme and can be made available within a short time frame and with low costs in design and tooling.

Side view



pcb layout



for more safety
and performance

Electrical characteristics	Unswitched	Switched
Impedance	50 Ohm	50 Ohm
Operating frequency	DC...4 GHz	DC...4 GHz
Return-loss		
≤ 1 GHz	< 28 dB	> 25 dB
≤ 2 GHz	< 28 dB	> 25 dB
≤ 4 GHz	< 28 dB	> 11 dB
Isolation		
≤ 1 GHz		> 30 dB
≤ 2 GHz		> 25 dB
≤ 4 GHz		> 22 dB
Insertion loss		
≤ 1 GHz	< 0.10 dB	< 0.10 dB
≤ 2 GHz	< 0.13 dB	< 0.20 dB
≤ 4 GHz	< 0.25 dB	< 0.35 dB
Insulation resistance	> 500 MOhm	
Contact resistance		
Center contact	< 45 mOhm	< 45 mOhm
Outer contact	< 5 mOhm	< 5 mOhm
Contact current max.	< 0.5 A	
Operating voltage	100 V	100 V
Proof voltage	500 V	500 V

Mechanical characteristics	
Engagement force*	6 N max.
Separating force*	5 N max.
Mating cycles	10,000
Contact pressure force (switch)	0.8 N (only switch, spring contact)
Misalignment	
Axial x, y	± 0.4 mm on diameter
Angular	± 3°

Materials	
Housing	Diecast
Insulator	PA
Moveable / Stationary contacts	Beryllium Copper
Other metal parts	Brass

Plating	
Housing	Optalloy + Flash Au
Moveable / Stationary contacts	Au
Other metal parts	Tribor + DUOR

Environmental	
Working temperature range	IEC 60068-2-1 / Ab
Moisture resistance	IEC 60068-2-2 / Bb
Relative humidity	IEC 60068-2-14 / Nb
Thermal cycling	IEC 60068-2-30 / Dp

(with mating connector 2255.99.1420.0)