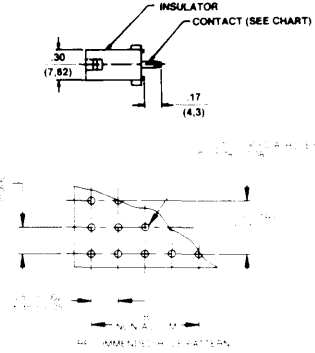
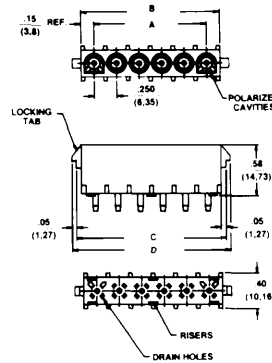
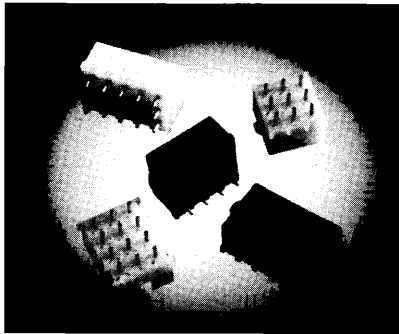


# .250" (6.35mm) PCB Header Assembly



## FEATURES:

- Wire to PCB capability
- Header assembly can accommodate pin or socket contact
- Header assemblies available in 94 V-2 or 94 V-0 rated thermoplastic
- Housings designed with drain holes and solder standoffs to facilitate easier flux removal
- Positive polarization designed in
- Positive locking tabs on housings
- Mates with plug housing
- Industry Standard Mateability
- Recognized under Component Program of UNDERWRITERS LABORATORIES INC. File No. E48567
- CSA Certified File No. 52212

## ORDERING INFORMATION SINGLE ROW IN LINE\*

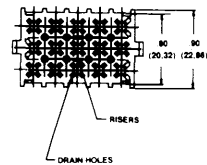
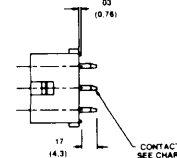
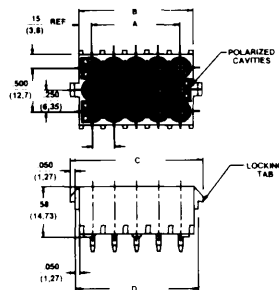
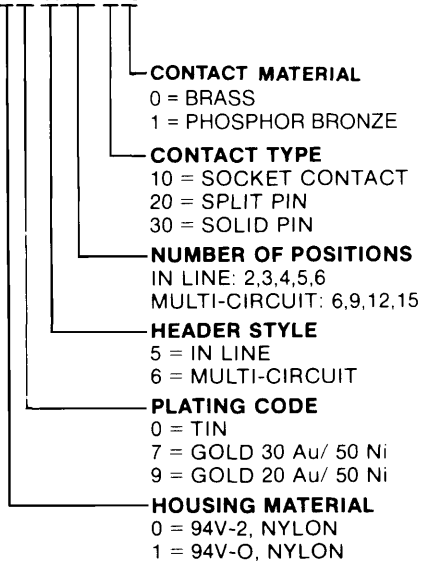
Number of Circuits	Part Number W/Socket Contact Nylon 94 V-2 Natural	Part Number W/Split Pin Nylon 94 V-2 Natural	Part Number W/Solid Pin Nylon 94 V-2 Natural	Dimensions: .XX ± .02 (0.50) .XXX ± .008 (0.20)	
				A	B
2	250X-502-1X	250X-502-2X	250X-502-3X	.250 (6.35)	.550 (13.97)
3	250X-503-1X	250X-503-2X	250X-503-3X	.500 (12.70)	.800 (20.32)
4	250X-504-1X	250X-504-2X	250X-504-3X	.750 (19.05)	1.050 (26.67)
5	250X-505-1X	250X-505-2X	250X-505-3X	1.000 (25.40)	1.300 (33.02)
6	250X-506-1X	250X-506-2X	250X-506-3X	1.250 (31.75)	1.550 (39.37)

Number of Circuits	Part Number W/Socket Contact Nylon 94 V-0 Red	Part Number W/Split Pin Nylon 94 V-0 Red	Part Number W/Solid Pin Nylon 94 V-0 Red	Dimensions:	
				A	B
2	251X-502-1X	251X-502-2X	251X-502-3X	.250 (6.35)	.550 (13.97)
3	251X-503-1X	251X-503-2X	251X-503-3X	.500 (12.70)	.800 (20.32)
4	251X-504-1X	251X-504-2X	251X-504-3X	.750 (19.05)	1.050 (26.67)
5	251X-505-1X	251X-505-2X	251X-505-3X	1.000 (25.40)	1.300 (33.02)
6	251X-506-1X	251X-506-2X	251X-506-3X	1.250 (31.75)	1.550 (39.37)

## PART NUMBER CODING

25XX-XXX-XX



## ORDERING INFORMATION MULTI CIRCUIT\*

Number of Circuits	Part Number W/Socket Contact Nylon 94 V-2 Natural	Part Number W/Split Pin Nylon 94 V-2 Natural	Part Number W/Solid Pin Nylon 94 V-2 Natural	Dimensions: .XX ± .02 (0.50) .XXX ± .008 (0.20)	
				A	B
6	250X-606-1X	250X-606-2X	250X-606-3X	.250 (6.35)	.55 (13.97)
9	250X-609-1X	250X-609-2X	250X-609-3X	.500 (12.70)	.80 (20.32)
12	250X-612-1X	250X-612-2X	250X-612-3X	.750 (19.05)	1.05 (26.67)
15	250X-615-1X	250X-615-2X	250X-615-3X	1.000 (25.40)	1.30 (33.02)

Number of Circuits	Part Number W/Socket Contact Nylon 94 V-0 Red	Part Number W/Split Pin Nylon 94 V-0 Red	Part Number W/Solid Pin Nylon 94 V-0 Red	Dimensions:	
				A	B
6	251X-606-1X	251X-606-2X	251X-606-3X	.250 (6.35)	.55 (13.97)
9	251X-609-1X	251X-609-2X	251X-609-3X	.500 (12.70)	.80 (20.32)
12	251X-612-1X	251X-612-2X	251X-612-3X	.750 (19.05)	1.05 (26.67)
15	251X-615-1X	251X-615-2X	251X-615-3X	1.000 (25.40)	1.30 (33.02)

**NOTE: PLATING OPTIONS** — Select the desired contact plating from the following option codes.

7 = .00003 Gold .00005 Nickel	9 = .00002 Gold .00003 Nickel	0 = Tin
----------------------------------	----------------------------------	---------