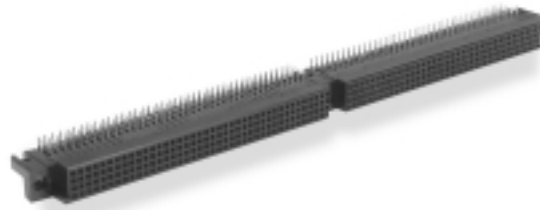


FOUR ROW, TWO CELL RIGHT ANGLE FEMALE XD/P™ CONNECTORS 320-488 POSITIONS ONE CENTER MOUNTING FEATURE



PHYSICAL PROPERTIES

Insulation Material: Glass filled thermoplastic rated UL 94V-0
 Color: Black
 Contacts: Copper alloy, nickel plate overall, 30 microinches gold plating in contact zone, tin/lead or gold on solder tails

ELECTRICAL PROPERTIES

Current Rating: 2 amps/pin
 Insulation Resistance: >1 x 10⁹ Ohms
 Dielectric Strength: > 1000 VDC at sea level

ENVIRONMENTAL PROPERTIES

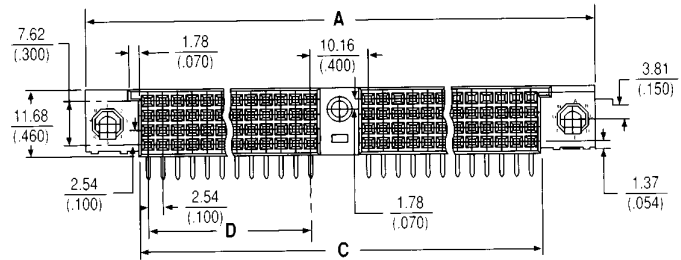
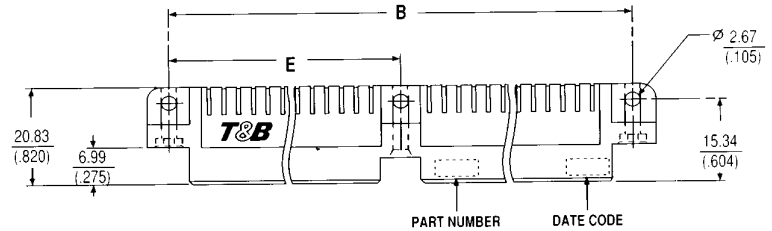
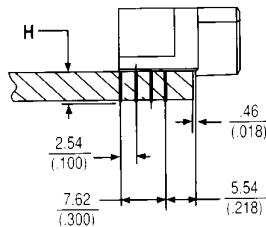
Temperature Rating: -55°C TO 125°C

MOUNTING HARDWARE

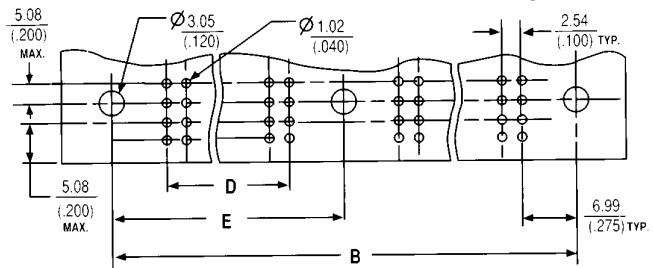
See pages 310-314

SELECTIVE LOADING

See pages 308-309



Recommended Printed Circuit Board Layout



Ordering Information

NO. OF POS.	PART NUMBER SPECIFY X	A	B	C	D	E	X	H TAIL LENGTH	RECOMMENDED PCB THICKNESS RANGE
320	403201X000-21	229.87 (9.050)	222.25 (8.750)	212.09 (8.350)	99.06 (3900)	111.13 (4.375)	A	3.05 (.120)	1.2 - 2.0 (.047 - .077)
344	403441X000-21	245.11 (9.650)	237.49 (9.350)	227.33 (8.950)	106.68 (4.200)	118.75 (4.675)	B	3.81 (.150)	2.0 - 2.8 (.078 - .109)
352	403521X000-21	250.19 (9.850)	242.57 (9.550)	232.41 (9.150)	109.22 (4.300)	121.29 (4.775)	C	4.57 (.180)	2.8 - 3.6 (.110 - .140)
360	403601X000-21	255.27 (10.050)	247.65 (9.750)	237.49 (9.350)	111.76 (4.400)	123.83 (4.875)			
368	403681X000-21	260.35 (10.250)	252.73 (9.950)	242.57 (9.550)	114.30 (4.500)	126.37 (4.975)			
392	403921X000-21	275.59 (10.850)	267.97 (10.550)	257.81 (10.150)	121.92 (4.800)	133.99 (5.275)			
400	404001X000-21	280.67 (11.056)	273.05 (10.750)	262.89 (10.350)	127.00 (4.900)	139.06 (5.375)			
416	404161X000-21	290.83 (11.450)	283.21 (11.150)	273.05 (10.750)	129.54 (5.100)	141.61 (5.575)			
440	404401X000-21	306.07 (12.050)	298.45 (11.750)	288.29 (11.350)	137.16 (5.400)	149.23 (5.875)			
464	404641X000-21	321.31 (12.650)	313.69 (12.350)	303.53 (11.950)	144.78 (5.700)	156.85 (6.175)			
488	404881X000-21	336.55 (13.250)	328.93 (12.950)	318.77 (12.550)	152.40 (6.000)	164.47 (6.475)			

eg. 404881A000-21