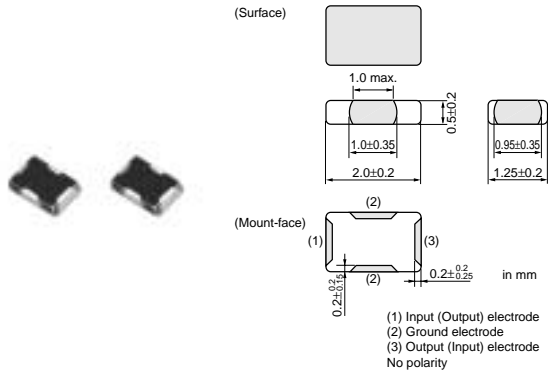


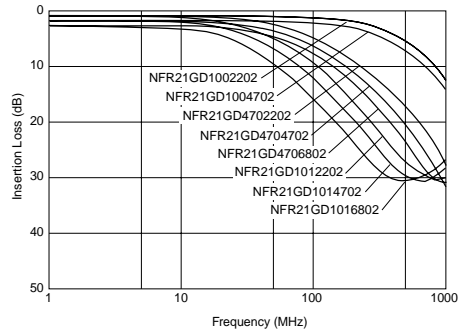
Chip EMIFIL® RC Combined Type

Chip EMIFIL®

● NFR21G Series



IL of Main Items



Part Number	Capacitance (pF)	Resistance (ohm)	Rated Current (mA)	Rated Voltage (Vdc)	Insulation Resistance (M ohm)	Operating Temperature Range (°C)
NFR21GD1002202	10 +20%,-20%	22 +30%,-30%	50	50	1000 min.	-40 to 85
NFR21GD1004702	10 +20%,-20%	47 +30%,-30%	35	50	1000 min.	-40 to 85
NFR21GD4702202	47 +20%,-20%	22 +30%,-30%	50	50	1000 min.	-40 to 85
NFR21GD4704702	47 +20%,-20%	47 +30%,-30%	35	50	1000 min.	-40 to 85
NFR21GD4706802	47 +20%,-20%	68 +30%,-30%	30	50	1000 min.	-40 to 85
NFR21GD4701012	47 +20%,-20%	100 +30%,-30%	25	50	1000 min.	-40 to 85
NFR21GD1012202	100 +20%,-20%	22 +30%,-30%	50	50	1000 min.	-40 to 85
NFR21GD1014702	100 +20%,-20%	47 +30%,-30%	35	50	1000 min.	-40 to 85
NFR21GD1016802	100 +20%,-20%	68 +30%,-30%	30	50	1000 min.	-40 to 85
NFR21GD1011012	100 +20%,-20%	100 +30%,-30%	25	50	1000 min.	-40 to 85

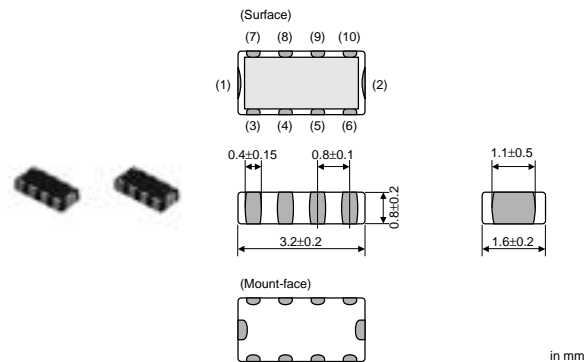
Number of Circuit : 1

Noise Suppression Products/(EMIFIL®)

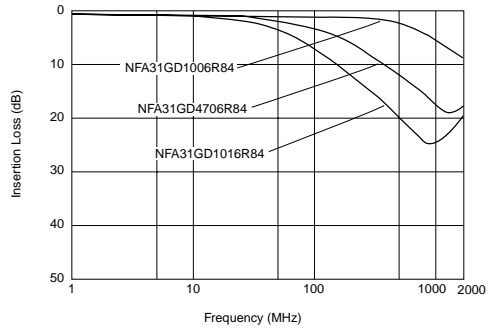
Chip EMIFIL® RC Combined Type

Chip EMIFIL® Arrays

● NFA31G Series



Insertion Loss(Typ.)



Part Number	Capacitance (pF)	Resistance (ohm)	Rated Current (mA)	Rated Voltage (Vdc)	Insulation Resistance (M ohm)	Operating Temperature Range (°C)
NFA31GD1006R84	10 +20%,-20%	6.8 +40%,-40%	50	6	1000 min	-40 to 85
NFA31GD1004704	10 +20%,-20%	47 +30%,-30%	20	6	1000 min	-40 to 85
NFA31GD1001014	10 +20%,-20%	100 +30%,-30%	15	6	1000 min	-40 to 85
NFA31GD4706R84	47 +20%,-20%	6.8 +40%,-40%	50	6	1000 min	-40 to 85
NFA31GD4704704	47 +20%,-20%	47 +30%,-30%	20	6	1000 min	-40 to 85
NFA31GD4701014	47 +20%,-20%	100 +30%,-30%	15	6	1000 min	-40 to 85
NFA31GD1016R84	100 +20%,-20%	6.8 +40%,-40%	50	6	1000 min	-40 to 85

Continued on the following page. ↗

Continued from the preceding page.

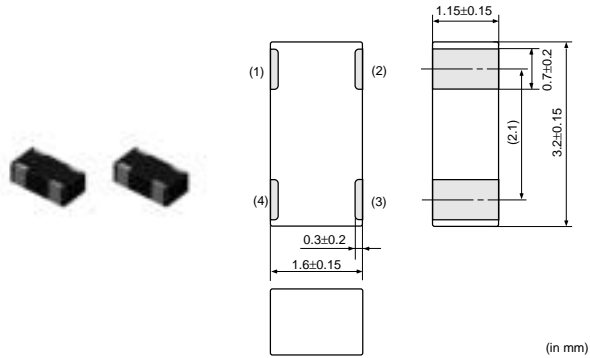
Part Number	Capacitance (pF)	Resistance (ohm)	Rated Current (mA)	Rated Voltage (Vdc)	Insulation Resistance (M ohm)	Operating Temperature Range (°C)
NFA31GD1014704	100 +20%,-20%	47 +30%,-30%	20	6	1000 min	-40 to 85
NFA31GD1011014	100 +20%,-20%	100 +30%,-30%	15	6	1000 min	-40 to 85

Number of Circuit : 4

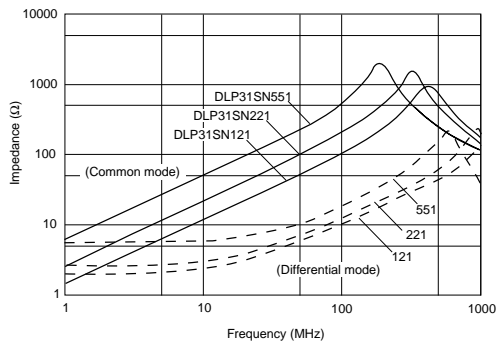
Chip Common Mode Choke Coils

Film Type

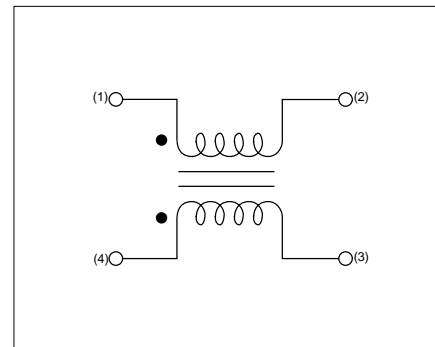
● DLP31S Series



Z-F Characteristics(Typ.)



Equivalent Circuit



Part Number	Common Mode Impedance (ohm)	Rated Current (A)	Rated Voltage (Vdc)	Insulation Resistance (M ohm)	Withstand Voltage (Vdc)	DC Resistance (max.) (ohm)
DLP31SN551SL2	550 (Typ.) at 100MHz	0.1	16	100 min.	40	3.6
DLP31SN221SL2	220 (Typ.) at 100MHz	0.1	16	100 min.	40	2.5
DLP31SN121SL2	120 (Typ.) at 100MHz	0.1	16	100 min.	40	2.0

Operating Temperature Range : -40°C to 85°C