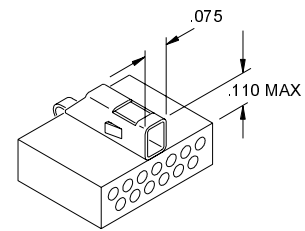
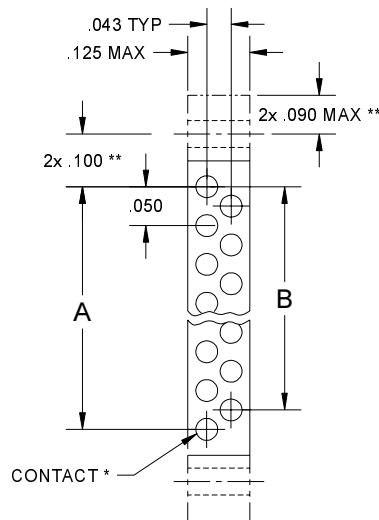
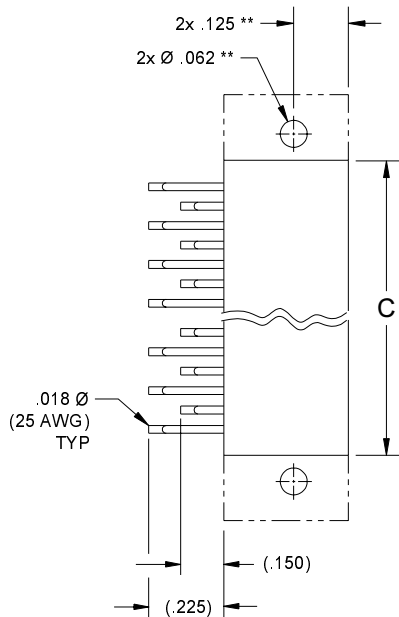


1.4 MICRO CONNECTORS / STRIP

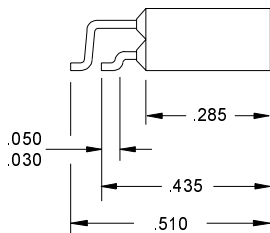
NO. OF POSITIONS	A	B	C MAX	D**
03	.050	-	.135	.335
04	-	.075	.160	.360
05	.100	-	.185	.385
06	-	.125	.210	.410
07	.150	-	.235	.435
08	-	.175	.260	.460
09	.200	-	.285	.485
10	-	.225	.310	.510
11	.250	-	.335	.535
12	-	.275	.360	.560
13	.300	-	.385	.585
14	-	.325	.410	.610
15	.350	-	.435	.635

NO. OF POSITIONS	A	B	C MAX	D**
16	-	.375	.460	.660
17	.400	-	.485	.685
18	-	.425	.510	.710
19	.450	-	.535	.735
20	-	.475	.560	.760
21	.500	-	.585	.785
22	-	.525	.610	.810
23	.550	-	.635	.835
24	-	.575	.660	.860
25	.600	-	.685	.885
26	-	.625	.710	.910
27	.650	-	.735	.935
28	-	.675	.760	.960

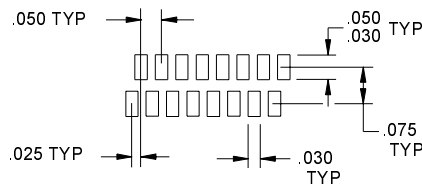
NO. OF POSITIONS	A	B	C MAX	D**
29	.700	-	.785	.985
30	-	.725	.810	1.010
31	.750	-	.835	1.035
32	-	.775	.860	1.060
33	.800	-	.885	1.085
34	-	.825	.910	1.110
35	.850	-	.935	1.135
36	-	.875	.960	1.160
37	.900	-	.985	1.185
38	-	.925	1.010	1.210
39	.950	-	1.035	1.235
40	-	.975	1.060	1.260



MICRO STRIP WITH PLUG LATCH



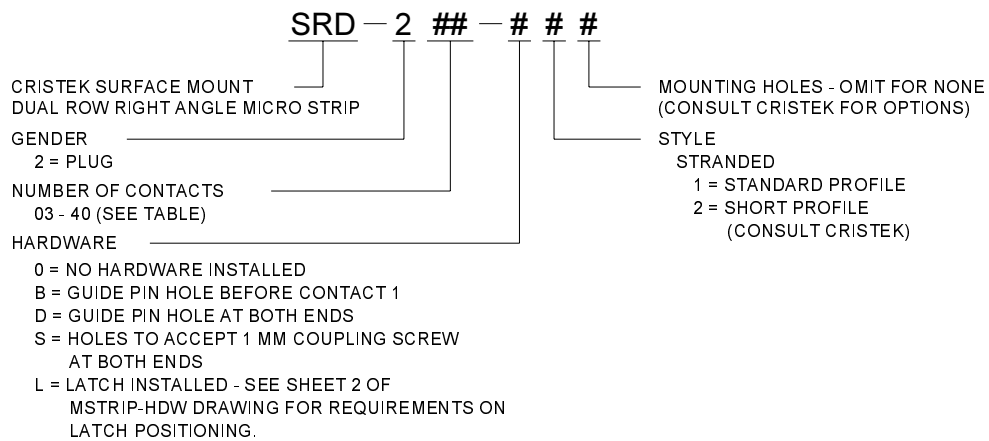
PLUG, PIN
RIGHT ANGLE



TYPICAL RIGHT ANGLE
P.C.B. LAYOUT PATTERN

STANDARD PROFILE

CRISTEK INTERCONNECTS, INC. www.cristek.com 1301 S. Lewis St. Anaheim, CA 92805 Phone: (714) 618-2000 FAX: (714) 535-4897	TITLE	SURFACE MOUNT MICRO STRIP DUAL ROW PLUG, RIGHT ANGLE			DWG. NO.	SRD			
	FILENAME	ADS-SRD-1			CODE IDENT NO.	67720	SHT	1 OF 2	REV
					TOLERANCE: .XXX ±.005 .XX ±.01 ANGLE ±1°				



* = SEE SHEET 2 OF MSTRIP-HDW FOR LOCATION OF CONTACT 1.
 ** = DIMENSIONS/INFORMATION FOR THROUGH HOLE MOUNTING OPTION

1. MATERIALS:

INSULATOR - POLYPHENYLENE PER MIL-M-24519
 TYPE GST-40F
 PIN CONTACT - BERYLLIUM COPPER

2. FINISH:

CONTACT - GOLD PER MIL-G-45204, TYPE II, GRADE C
 CLASS I OVER NICKEL PER QQ-N-290,
 (LEADS TYPICALLY HOT TIN DIPPED)

3. SPECIFICATIONS:

CURRENT RATING 3 AMPS MAX
 TEMPERATURE RATING -55° C TO +125° C
 INSULATION RESISTANCE 5000 MEGOHMS MIN
 DWV AT SEA LEVEL 600 VAC
 DWV AT 70,000 FT ALTITUDE ... 150 VAC
 CONTACT RESISTANCE 8 MILLIOHMS MAX AT 2.5 AMPS
 LOW LEVEL CONTACT 10 MILLIOHMS MAX
 RESISTANCE
 CONTACT RETENTION 5 lb MINIMUM AXIAL LOAD
 ENGAGEMENT FORCE 6 oz MAX
 SEPERATION FORCE 0.5 oz MIN

4. ADDITIONAL INFORMATION:

DESIGN AND PERFORMANCE IN GENERAL
 ACCORDANCE WITH M83513
 MATES WITH CDS
 STRIPS WITH OVER 30 CONTACTS MAY BE
 DIFFICULT TO MATE AND DEMATE AND TEND
 TO BECOME FRAGILE. CONTACT CRISTEK
 FOR APPLICATION ASSISTANCE.

CRISTEK INTERCONNECTS, INC. www.cristek.com 1301 S. Lewis St. Anaheim, CA 92805 Phone: (714) 618-2000 FAX: (714) 535-4897	TITLE SURFACE MOUNT MICRO STRIP DUAL ROW PLUG, RIGHT ANGLE	DWG. NO. SRD	
	FILENAME ADS-SRD-2	CODE IDENT NO. 67720	SHT 2 OF 2
TOLERANCE: .XXX ±.005 .XX ±.01 ANGLE ±1°			