

STRAIGHT PLUG.

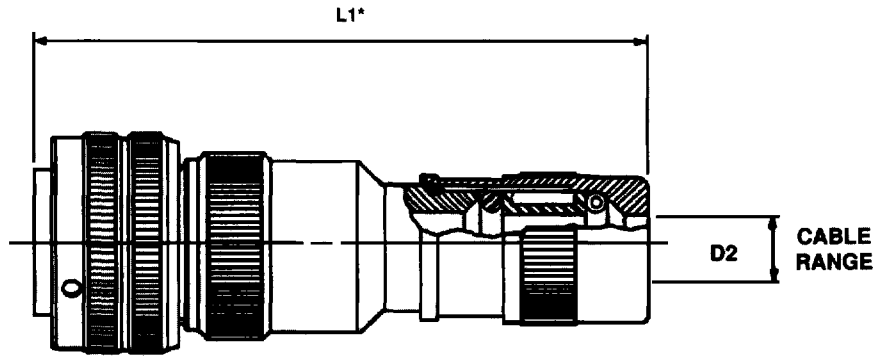
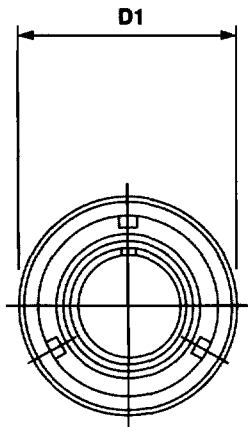
CIR 06WK

CIR 06WK

Includes aluminum backshell and backnut with strain relief and seal for jacketed cable. Individual wire sealing grommet or potting port not included.



CIR 06WK



DIMENSIONS ARE IN MM.

SHELL SIZE	D1 MAX.	L* TYPICAL
10SL	22.8	111
14S	29.2	112
16S	33	100
16	33	110
18	36.5	127
20	39.9	127
22	43.1	133
24	46.6	134
28	53.4	134
32	60.1	136
36	66.3	136
40	72.4	136

Typical Part No.: CIR06WK-20-11S-F80(YY)

(YY)	D2	
	MIN.	MAX
01	1.59	3.18
02	3.18	6.35
03	6.35	9.53
04	9.53	12.7
05	12.7	15.88
06	15.88	19.05
07	19.05	22.23
08	22.23	25.4
09	25.4	28.58
10	28.58	31.75
11	31.75	34.93
12	34.93	38.1
13	38.1	41.23
14	41.23	44.45
15	44.45	47.63
16	47.63	50.8

Dimension L will vary from the values indicated with escalating or de-escalating backshells and some special insert configurations. Verify with our Customer Service department.*