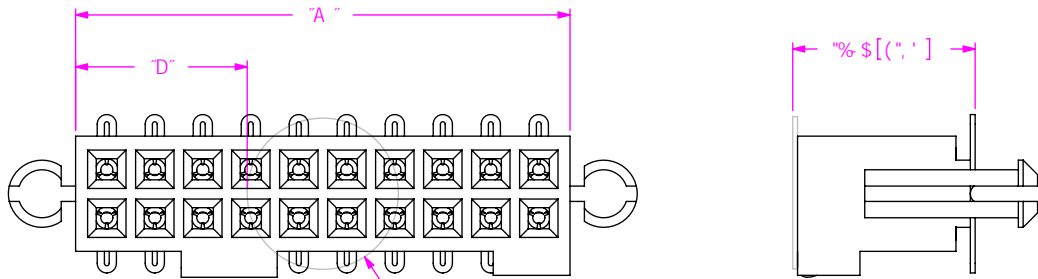


: ± " &
!?. DC @MA -B9: @A D58 C DHC B
fg<C K B. G A L!%\$!LL!LLL!8!?!&

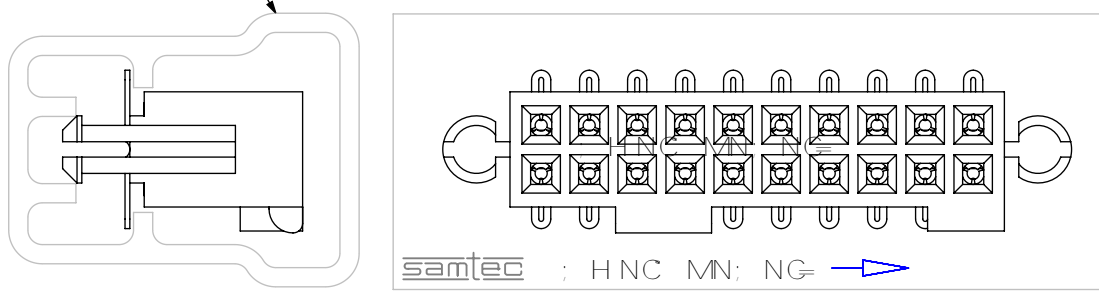


Ø"%) + -"\$%) \$["\$%- \$"%]

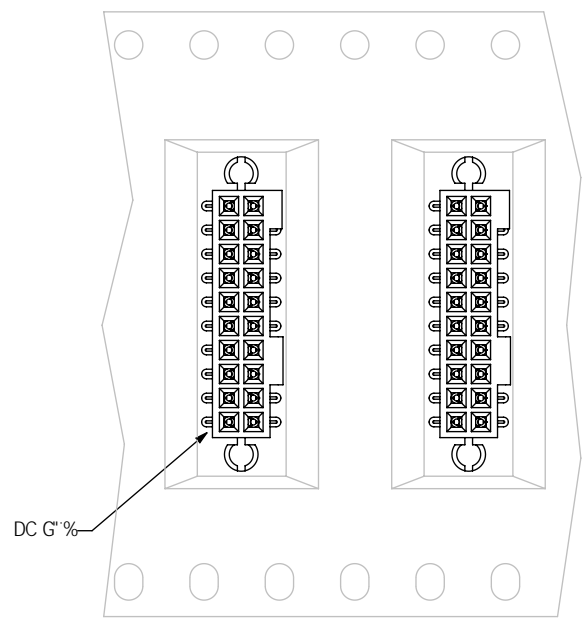
BC H9
"A "1 l G98 A 95 G l F98 8 A 9B G€ B fF 9 t
"D "1 c fA "l "%) +) Q "\$\$\$Q #&q ± "\$&S0) %Q

D57?5; B; J 9K

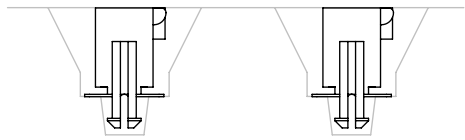
DH%&(1% ! \$-



BC H9
"%" D5FHGC '69D57?5; 98 B DH%&(1% ! \$- H 69GK #k
.....HK C 'Hl!&('D@ : GD9F 'H 69"
" &" @ 58 D5FHGK #k BC H7 < HCK 5F8G5FFCK "



I BK B8-B; '8 F97 HC B →



: P8K : PA 67 Pa _j PG A L!%\$!LL!LLL!8!LL!IA?HG88FK

DFC DF 95 FMBC H9
H: G8C71A 98H7C B16 BG B: CFA 5HC B
7CB: 898H5B8 DFC DF 945 FHC
GSA H97 2 87 5B8 G-588BC H69 F90FC 81 7 98
CF HF5BG 9F98 HC C H: 9F 8C 71A 98HGCF
8 47 @C 98 HC C H: 9FGCF 1 98 : CF 58M
DI FDC 09 CH: 9F H: 5B H: 5HK <? < #H 5G
C 615 B98 K #c I H: 99LDF 9098 K F #68
7CB 98HC : GSA H97 2 87 "

8C 'BCH G7 5 @9 8F5K B:

G: 99HG7 5 @9) : %

samtec

) & \$ D5F? 95GH6@ 82B9K 5 @5BM-B (+) \$
D<C B9; %&L - ((! * + SL; %&L - () \$ (+
YIA UJ;) & z 4 GSA H97 "Vc a W€XY.)) &&

89G7 F 0HC B.
"\$) \$Q%&+Ql (") \$Q%&+Q@C 7? B; 'GC 7? 9H5GG9A 6@M
8K : "BC"
G A L!%\$!LL!LLL!8!LL
6M 6F5H7 <9F &#(# - G<99H & C : &