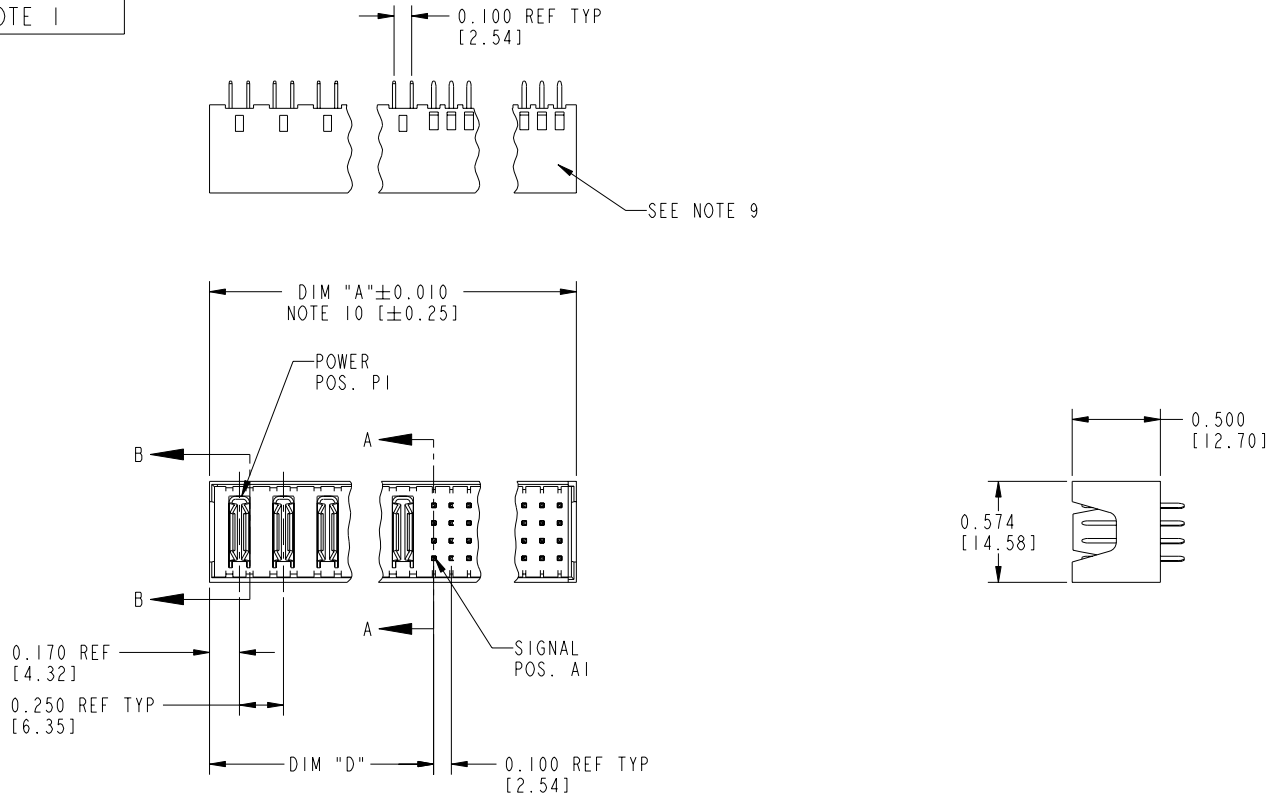


Tous droits strictement réservés. Reproduction ou communication a des tiers interdite sous quelque forme que ce soit sans autorisation écrite du propriétaire. Propriété de c FCI. Droits de reproduction FCI.

All rights strictly reserved. Reproduction or issue to third parties in any form whatever is not permitted without written authority from the proprietor. Property of FCI. Copyright FCI.

PRODUCT NUMBER
51706-ABBCCC00E0_
SEE NOTE 1



CONFIDENTIAL

mat'l code				NOTE 2		tolerances unless otherwise specified		CUSTOMER		 www.fciconnect.com	
lfr	ecn no.	dr	date	linear	.XX±.01/0.XX±0.3	COPY		projection		title	
J	DG05-0132	SJ	05/31/05		.XXX±.005/0.XX±0.13	MM				VERTICAL HEADER w/o GUIDE PIN POWER / SIGNAL	
K	DG05-0471	CS	11/16/05		.XXX±.0020/.XXX±.051	scale		1:1		product family	
				angles	0°±2°				PWRBLADE		code
				dr	JRW	10-16-01			size		213
				engr	J.ALLISON	10-16-01			dwg no		sheet
				chr	J.ALLISON	10-16-01			A		1 of 3
				appd	J.ALLISON	10-16-01			51706		
sheet index	revision sheet	K	K	K							
		1	2	3							

cage code 22526

Pro/E

PDM: Rev:K

STATUS Released

Printed: Oct 07, 2006

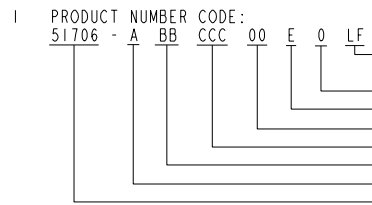
Tous droits strictement réservés. Reproduction ou communication a des tiers interdite sous quelque forme que ce soit sans autorisation écrite du propriétaire. Propriété de c FCI. Droits de reproduction FCI.

All rights strictly reserved. Reproduction or issue to third parties in any form whatever is not permitted without written authority from the proprietor. Property of FCI. Copyright FCI.

PRODUCT NUMBER
51706-ABBCC00E0_
SEE NOTE 1

DIM	LENGTH FORMULAS (SEE NOTE 10)
DIM "A"	.250 [6.35] x BB + .100 [2.54] x (CCC/4) + .090 [2.29] (NOTE 10)
DIM "D"	.250 [6.35] x BB + .095 [2.41]
DIM "F"	.250 [6.35] x BB + .100 [2.54] x (CCC/4) + .120 [3.05]
DIM "G"	.250 [6.35] x BB + .225 [5.72] - .025 [.064]

CONNECTOR NOTES



1. PRODUCT NUMBER CODE:
 51706 - A BB CCC 00 E 0 LF
 NO THIS SUFFIX: 100u"/2.54um SnPb ON PCB INTERFACE
 ADD THIS SUFFIX: 78u"/2.00um Sn OR 5u" Au ON PCB INTERFACE
 ALWAYS "0" (ZERO)(NOTE 8)
 TAIL OPTIONS (NOTE 7)
 ALWAYS "00" (ZERO, ZERO)(NOTE 6)
 NUMBER OF SIGNAL CONTACTS (NOTE 5)
 NUMBER OF LEFT POWER CONTACTS (NOTE 4)
 PLATING (NOTE 3)
 BASE NUMBER
2. HOUSING MATERIAL: UL94 V-0 GLASS FILLED HIGH TEMP THERMO PLASTIC.
 SIGNAL CONTACT MATERIAL: COPPER ALLOY
 POWER CONTACT MATERIAL: COPPER ALLOY
3. PLATING OPTION:
 1 = SIGNAL CONTACTS: 50u" / 1.27um Ni UNDER ALL; 30u" / 0.76um Au ON THE CONTACT AREA AND WITH 100u"/2.54um SnPb OR 78u"/2.00um Sn ON PCB INTERFACE
 POWER CONTACTS: 50u" / 1.27um Ni UNDER ALL; WITH 30u" / 76um Au ON CONTACT AREA AND WITH 100u"/2.54um SnPb OR 78u"/2.00um Sn ON PCB INTERFACE
 3 = SIGNAL CONTACTS: 50u" / 1.27um Ni UNDER ALL; 30u" / 0.76um Au ON THE CONTACT AREA AND WITH 5u"/0.13um Au ON PCB INTERFACE
 POWER CONTACTS: 50u" / 1.27um Ni UNDER ALL; WITH 30u" / 76um Au ON CONTACT AREA AND WITH 5u"/0.13um Au ON PCB INTERFACE
4. LEFT END POWER CONTACTS, 01 TO 20 AVAILABLE.
5. SIGNAL CONTACT, 004 TO 148 AVAILABLE.
6. THIS PART NOT AVAILABLE WITH RIGHT SIDE POWER CONTACTS.
7. TAIL OPTIONS:
 A = 0.135 +0.015/-0.010 [3.43 +0.38/-0.25] SOLDER TO BOARD
 B = 0.165 +0.015/-0.010 [4.19 +0.38/-0.25] SOLDER TO BOARD
 C = 0.165 +0.015/-0.010 [4.19 +0.38/-0.25] PRESS FIT
8. BOARD RETENTION NOT AVAILABLE WITH GUIDELESS ENDS.
9. MANUFACTURE'S NAME, P/N, AND DATE CODE TO APPEAR ON THIS SURFACE.
10. THE MAXIMUM OVERALL LENGTH (DIM A) OF A PART IS 8.00 [203.2]
11. PRODUCT SPECIFICATION GS-12-149
12. SEE PWRBLADE VERTICAL HEADER SPECIAL WORKSHEET (51696) FOR MATING LENGTH OPTIONS.
13. DIMENSIONS AND TOLERANCES ARE IN ACCORDANCE WITH ASME Y14.5M, 1994, UNLESS OTHERWISE SPECIFIED.
- PCB NOTES:
 14. ALL DIMENSIONS ARE BASIC UNLESS OTHERWISE SPECIFIED.
 15. ALL THROUGH HOLES ARE LOCATED WITH A TRUE POSITION OF 0.004 [0.10]
 16. ALL HOLE DIAMETERS ARE FINISHED HOLE SIZE.
 17. $\varnothing 0.0453 \pm 0.0010$ [1.151 ± 0.025] DRILLED HOLES PLATED WITH 0.0003 [0.008] MIN SnPb OVER 0.001 [0.03] TO 0.003 [0.08] Cu PLATING TO ACHIEVE A $\varnothing 0.040 \pm 0.003$ [1.02 ± 0.07] HOLE.
 18. FOR PRESS FIT APPLICATION USE FCI CAM TOOL 430169-XXX.

CONFIDENTIAL

mat'l code		NOTE 2		tolerances unless otherwise specified		CUSTOMER		 www.fciconnect.com	
lfr	ecn no.	dr	date	linear	.XX±.01/0.XX±0.3	COPY		title	
K				angles	.XXX±.005/0.XX±0.13	projection		VERTICAL HEADER w/o GUIDE PIN POWER / SIGNAL	
				dr	.XXX±.0020/.XXX±.051			product family	
				engr	J.ALLISON 10-16-01			PWRBLADE	
				chr	J.ALLISON 10-16-01			code	
				appd	J.ALLISON 10-16-01			213	
sheet index	revision sheet					size		sheet	
						A		2	
						51706			
						cage code		4	
						22526			

Pro/E

PDM: Rev:K

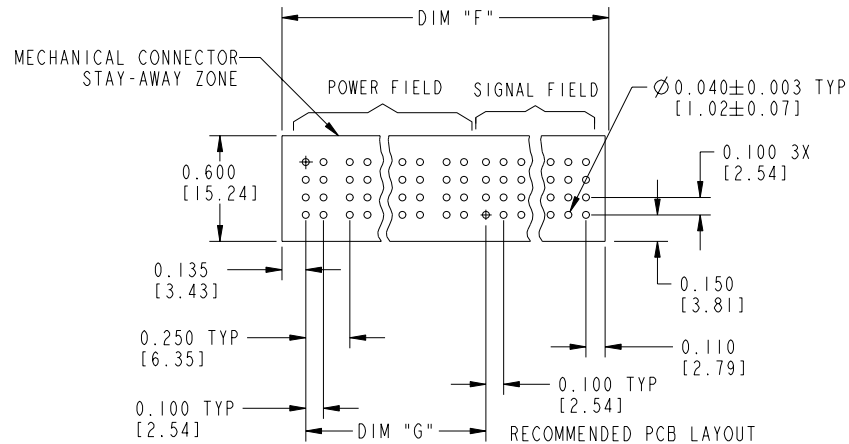
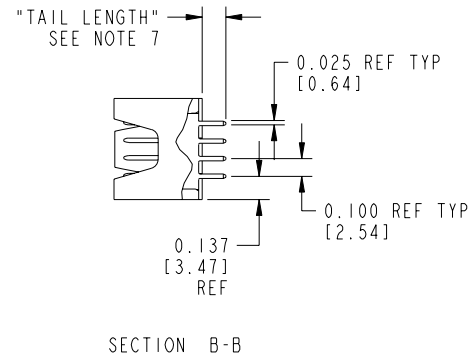
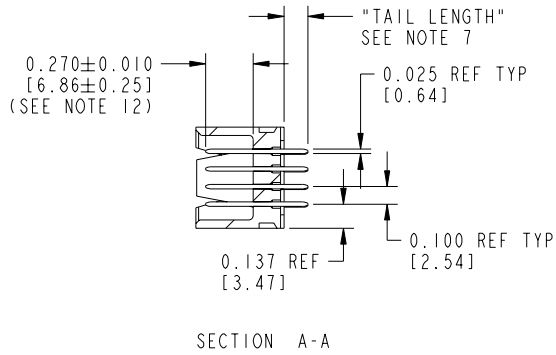
STATUS Released

Printed: Oct 07, 2006

Tous droits strictement réservés. Reproduction ou communication a des tiers interdite sous quelque forme que ce soit sans autorisation écrite du propriétaire. Propriété de c FCI. Droits de reproduction FCI.

All rights strictly reserved. Reproduction or issue to third parties in any form whatever is not permitted without written authority from the proprietor. Property of FCI. Copyright FCI.

PRODUCT NUMBER
51706-ABBCC00E0_ _
SEE NOTE 1



CONFIDENTIAL

mat'l code				NOTE 2		tolerances unless otherwise specified		CUSTOMER		 www.fciconnect.com	
ltr	ecn no.	dr	date	linear	.XX±.01/0.XX±0.3	COPY		projection		title	
K					.XXX±.005/0.XX±0.13					VERTICAL HEADER w/o GUIDE PIN POWER / SIGNAL	
				angles	.XXX±.0020/.XXX±.051					product family	
				dr	0°±2°			MM		PWRBLADE	
				enr	J.ALLISON 10-16-01			A		code	
				chr	J.ALLISON 10-16-01			1:1		213	
				appd	J.ALLISON 10-16-01					sheet	
sheet index	revision sheet									3	

cage code 22526

PDM: Rev:K

STATUS Released

Printed: Oct 07, 2006