

Customer Information Sheet

DRAWING No.: P25-7017

SHEET 2 OF 2

IF IN DOUBT - ASK

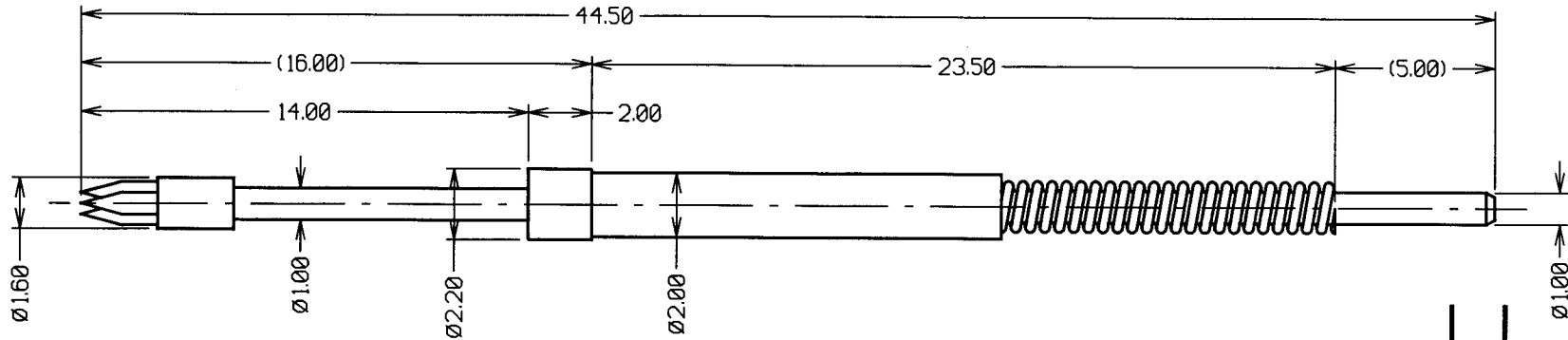
©

NOT TO SCALE

THIRD ANGLE PROJECTION

ALL DIMENSIONS IN mm

ORDER CODE:
P25-7017
PROBE HEAD ———
VARIANT



NOTES:

- SUITABLE FOR A MINIMUM DISTANCE BETWEEN CENTRES OF 2.54mm.
- RECOMMENDED HOLE SIZE = Ø2.00mm.

SPECIFICATIONS:

MATERIAL:

- PLUNGER = HIGH CARBON STEEL
- BARREL = ANTI-WEAR RESIN
- SPRING = STAINLESS STEEL

FINISH:

- PLUNGER = NICKEL

ELECTRICAL:

- CURRENT RATING = 3A
- CONTACT RESISTANCE = 30 MILLIOHMS

MECHANICAL:

- FULL TRAVEL = 6.00mm
- SPRING FORCES:
AT FULL TRAVEL = 2.65N ±0.53N (270g ±20%)

2	07.03.01	5730
ISS.	DATE	C/NOTE
APPROVED: <i>[Signature]</i>		
CHECKED: <i>[Signature]</i>		
DRAWN: W. J. BOURNE		
CUSTOMER REF.:		
ASSEMBLY DRG.:		

HARWIN

THIS DRAWING AND ANY INFORMATION OR DESCRIPTIVE MATTER SET OUT HEREON ARE CONFIDENTIAL AND COPYRIGHT PROPERTY OF THE HARWIN GROUP AND MUST NOT BE DISCLOSED, LOANED, COPIED OR USED FOR MANUFACTURING, TENDERING OR FOR ANY OTHER PURPOSE WITHOUT THEIR WRITTEN PERMISSION.

TOLERANCES
 X. = ±1mm
 X.X = ±0.25mm
 X.XX = ±0.10mm
 X.XXX = ±0.01mm
 ANGLES = ±1°
 UNLESS STATED

MATERIAL:

SEE ABOVE

FINISH:

SEE ABOVE

S/AREA:

mm²

TITLE:

2.54mm MIN. CENTRE
ONE-PIECE SPRING PROBE

DRAWING NUMBER:

P25-7017

HARWIN INC
U.S.A.
TEL: (812) 285 0055
FAX: (812) 285 0056

HARWIN PLC
U.K.
TEL: 023 9237 0451
FAX: 023 9231 4590

HARWIN PTE
SINGAPORE
TEL: 65 7794909
FAX: 65 7793868

SHT
2
OF
2