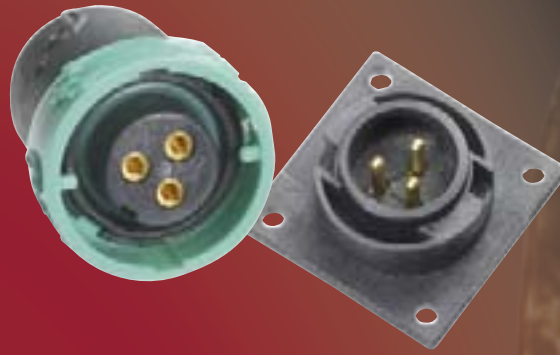


# KING COBRA

Rugged & Economical Circular Connector Systems

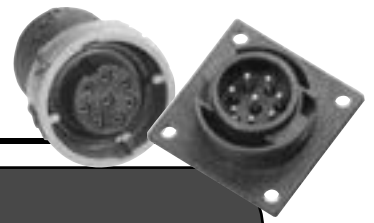


## PROFESSIONAL-QUALITY IP65 - RATED CIRCULAR CONNECTORS



- IP65 Environmental Rating
- Cable, Panel And PC Mount Options
- Solid Machined Contacts
- Unique "Twist-Lock" Mechanism

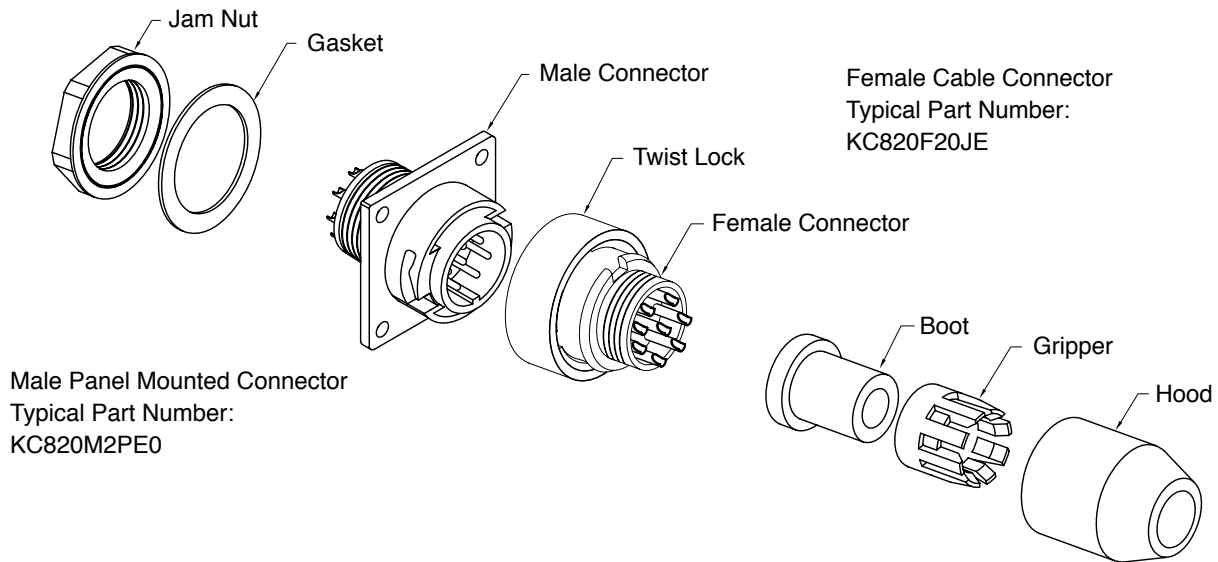
**Positronic Industries**  
[www.connectpositronic.com](http://www.connectpositronic.com)



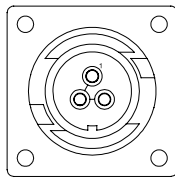
**FEATURES:**

- Circular “Twist-Lock” connectors with competitive pricing!
- Dust and water ingress protection to IP65 per IEC 60529.
- High reliability power and signal solid machined contacts.
- High mating cycle life and vibration-resistant capabilities!

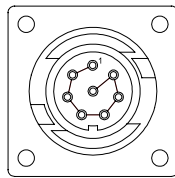
**Typical Connector Assembly**



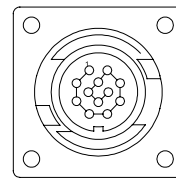
**Connector Versions**



**KC316:**  
Three (3) Size 16  
Power Contacts



**KC820:**  
Eight (8) Size 20  
Signal Contacts



**KC1222:**  
Twelve (12) Size 22  
Removable Signal Contacts

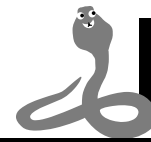
Unless otherwise specified, dimensional tolerances are:

- |                                  |                 |
|----------------------------------|-----------------|
| 1) Male contact mating diameters | : ±0.03 [0.001] |
| 2) Contact termination diameters | : ±0.08 [0.003] |
| 3) All other diameters           | : ±0.13 [0.005] |
| 4) All other dimensions          | : ±0.38 [0.015] |

Dimensions are in millimeters [inches]. All dimensions are subject to change.

Catalog A-004 rev. NC

Positronic believes the data contained herein to be reliable. Since the technical information is given free of charge, the user employs such information at his own discretion and risk. Positronic assumes no responsibility for results obtained or damages incurred from use of such information in whole or in part.



**Technical Characteristics**

**Materials and Finishes**

Insulator: Glass-filled nylon, UL 94V-0.  
Contacts: Precision machined copper alloy with gold over nickel plate.

**Electrical Characteristics**

Contact Current Ratings  
Size 16 Contacts: 20.0 amperes.  
Size 20 Contacts: 7.5 amperes.  
Size 22 Contacts: 3.0 amperes.  
Initial Contact Resistance per IEC 512-2, Test 2b.  
Size 16 Contacts: 0.003 ohms, maximum.  
Size 20/22 Contacts: 0.005 ohms, maximum.

Insulator Resistance per IEC 512-2, Test 3a.  
Insulator: 5 G ohms, minimum.

Proof Voltage  
Size 16 Contacts: 1300 V r.m.s.  
Size 20/22 Contacts: 1000 V r.m.s.

Working Voltage  
Size 16 Contacts: 433 V r.m.s.  
Size 20/22 Contacts: 333 V r.m.s.

**Climatic Characteristics**

Working temperature: -55°C to +125°C  
Dust and Water Ingress Protection: IP65 per IEC 60529 in mated condition (when jacketed cable is used). Degree of protection is dust-tight (no ingress of dust) and protected against water projected in jets from any direction.

**Mechanical Characteristics**

Polarization: Provided in insulator design.  
Removable Contacts: Insert contact in rear face of insulator; release from front face of insulator. Size 22 Female contacts feature "Open Entry" 500 cycles design and "Closed Entry" 1000 cycles minimum design options.  
Fixed Contacts: Size 16 female contacts feature "Closed Entry" 1000 cycles minimum design. (Consult factory for higher cycle options.) Size 20 female contacts feature "Open Entry" 500 cycles design. (Consult factory for "Closed Entry" options.)

Contact Retention in Insulator:  
Size 16 Contacts: 45 N [10 lbs.] minimum.  
Size 20/22 Contacts: 27 N [6 lbs.] minimum.

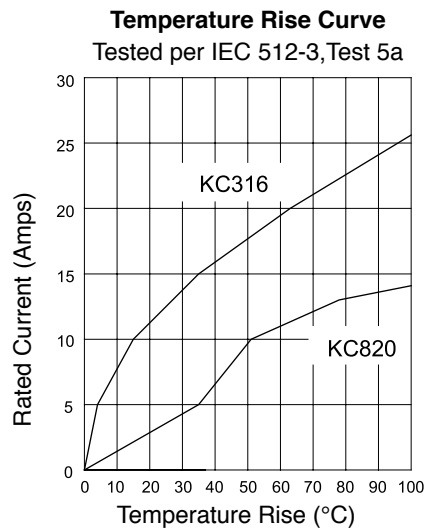
Coupling System: Twist lock.

Shock and Vibration: Pending. (Consult factory)

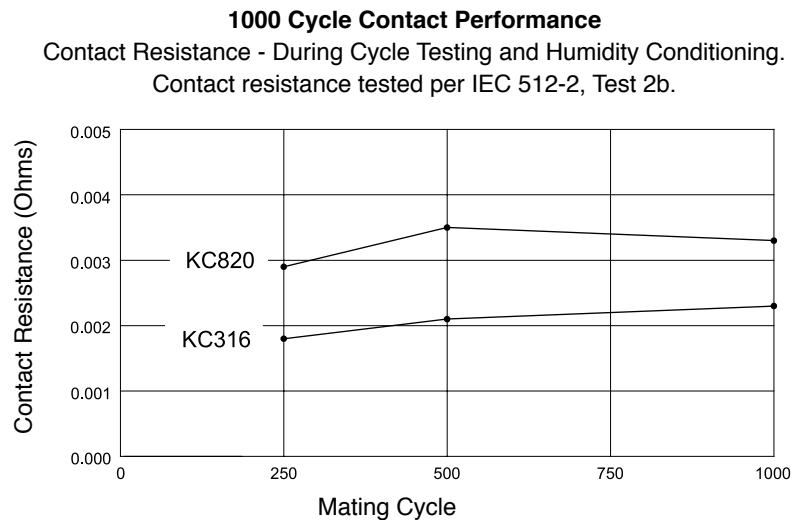
**Recognized**

UL certification in process.  
Consult factory for TÜV recognition.

**Temperature Rise Curve and Contact Performance**



Above curves developed separately using (a) KC316 connectors and 16 AWG wires, and (b) KC820 connectors and 20 AWG wires. All contacts under load.

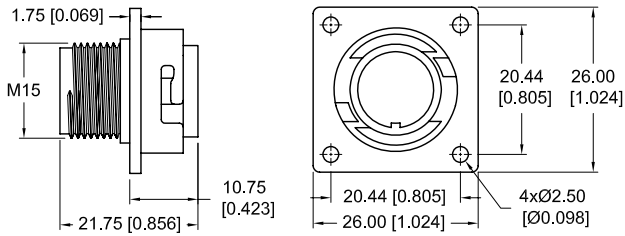


Humidity conditioning per EIA-364-31B, Method II (Condition A) after 250, 500 and 1000 mating cycles. Above curves developed separately using (a) KC316 connectors, and (b) KC820 connectors.

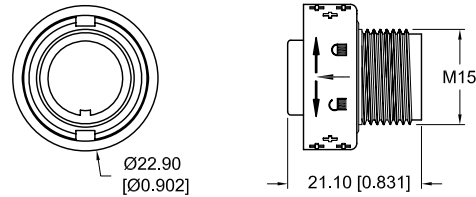


**Outline Dimensions**

**Male Connector**



**Female Connector**



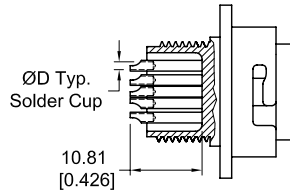
**Solder Cup Contacts**

Available in versions KC316 and KC820 only

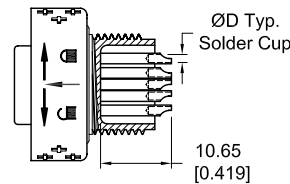
**Male Connector**

**Typical Part Number:  
KC820M200**

Specify code M2 in Step 2



Version	ØD
KC316	1.40 mm [0.055 inch]
KC820	1.19 mm [0.047 inch]



**Female Connector**

**Typical Part Number:  
KC820F200**

Specify code F2 in Step 2

**PCB Mount Contact Dimensions and PCB Hole Patterns**

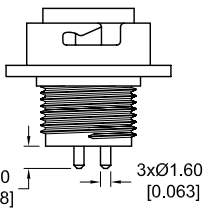
Straight and Right Angle (90°) PCB Mount Male Connectors

**Straight PCB Mount**

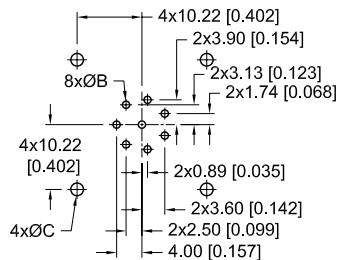
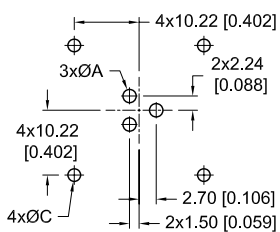
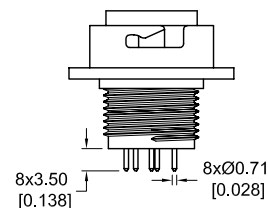
(Available in male connectors only)

Specify code M3 in Step 2

**Version 316**



**Version 820**

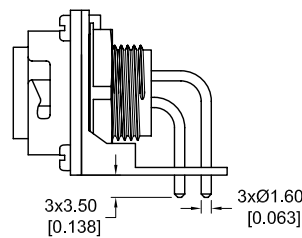


**Right Angle (90°) PCB Mount**

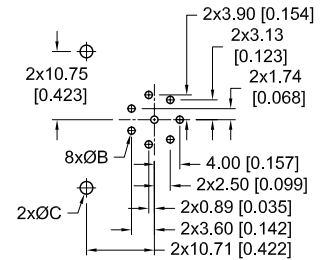
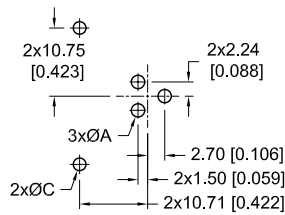
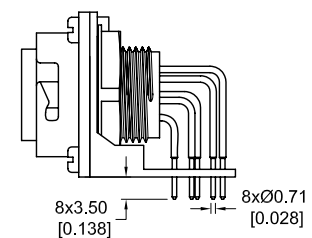
(Available in male connectors only)

Specify code M4 in Step 2

**Version 316**



**Version 820**



**Note:**Contact factory for availability of Female PCB Mount versions.

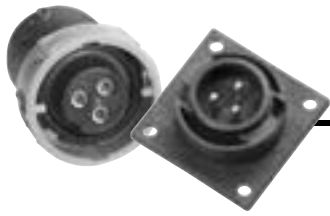
**Suggested PCB Hole Sizes and Mounting Screw:**

Suggested ØA = Ø2.03 [0.080] holes for size 16 contact termination holes. (Version 316).

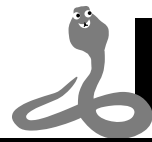
Suggested ØB = Ø1.14 [0.045] holes for size 20 contact termination holes. (Version 820).

Suggested ØC = Ø2.00±0.08 [0.079±0.003] holes for use with push-on fasteners.

Suggested ØC = Ø2.54 [0.100] holes for mounting connector with screws. Screws ordered separately. Screw part number 4546-7-1-16 for PCB thickness between 1.00 mm [0.039 inch] and 2.50 mm [0.098 inch]. (Consult factory for other PCB thickness requirements.)



# PANEL MOUNT CONNECTORS, ACCESSORIES AND SCREW TERMINATION VERSION



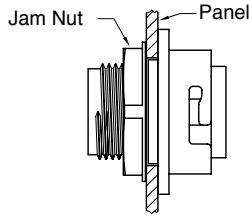
**KING COBRA**  
Circular Connectors

## Panel Mounting Options

Available in male connectors only

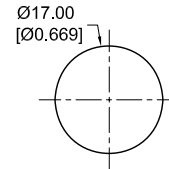
### Front Panel Mount Typical Part Number: KC316M2P0

Specify code P in Step 3



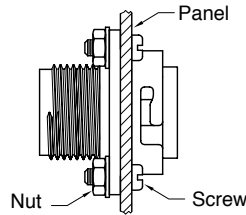
### Panel Cutout for Front Panel Mount

Maximum thickness 2.00 mm  
[0.079 inch]



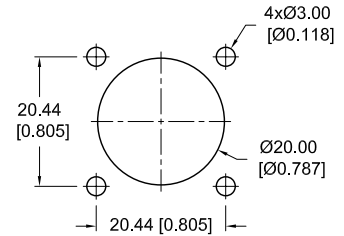
### Rear Panel Mount Typical Part Number: KC820M2PR0

Screws, nuts and washers  
supplied seperately.



### Panel Cutout for Rear Panel Mount

Maximum thickness 2.00 mm  
[0.079 inch]

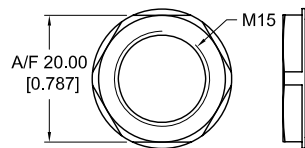


(Screws and nuts shown for reference only)

## Accessories

### Jam Nut

Supplied factory installed to  
connector.  
(See ordering information  
- code P in step 3)

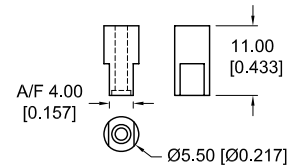


### Material:

Jam nut: Nylon, UL 94V-0.

### Spacers

Supplied factory installed to  
connector with 4 screws.  
Specify code S in step 3

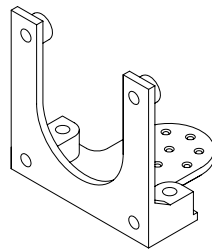


### Materials and Finish:

Spacer: Nylon, UL 94V-0.  
Screw: Steel with zinc plate

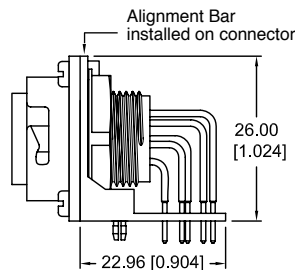
### Alignment Bar

Supplied factory installed on  
all right angle (90°) PCB mount  
connectors with 4 screws.



### Materials and Finish:

Alignment Bar: Nylon, UL 94V-0.  
Screw: Steel with zinc plate.



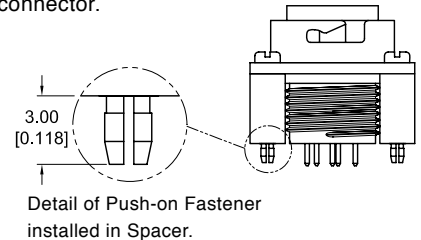
See page 3 for  
mounting hole details.

### Spacers with Push-on Fasteners

Supplied factory installed to connector.  
Specify code S6 in step 3

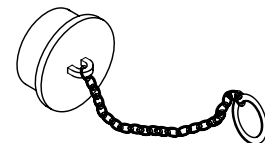
### Materials and Finishes:

Push-on Fastener:  
Copper alloy with tin plate.  
Spacer: Nylon, UL 94V-0.  
Screw: Steel with zinc plate.



### Dust Cover

Consult factory for availability.



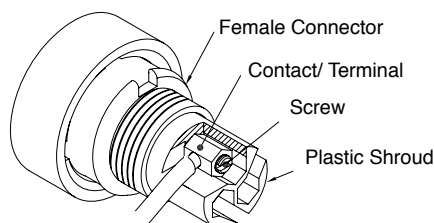
## Screw Termination Connector

### Typical Part Number: KC316F700

Specify code F7 in Step 2.  
Available in version KC316 female connector only.

### Materials and Finish:

Terminal and Screw:  
Copper alloy with tin plate  
Plastic Shroud: Nylon, UL 94V-0.



### Note:

Screw Termination accomodates  
maximum wire size AWG 18 [1.0 mm<sup>2</sup>].



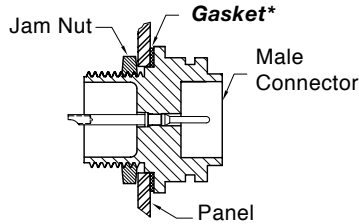


**Detail of IP65 Version Connectors and Hood**

**Male Front Panel Mount Connector**

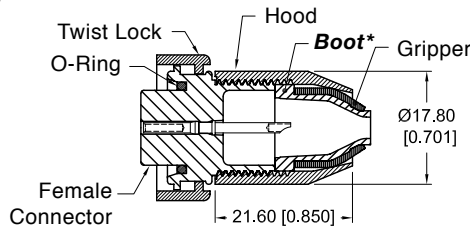
**Typical Part Number: KC820M2PE0**

(Consult factory for rear panel mount IP65 applications.)



**Female Cable Connector**

**Typical Part Number: KC316F20JE**



**Materials:**

Hood and Gripper: Nylon, UL 94V-0.  
Boot and Gasket: Nitrile.  
O-Ring: Silicon.

**Note:**

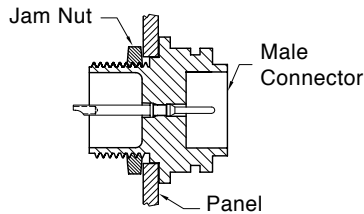
Hood design can accommodate jacketed cable diameters between 4.00mm [0.157 inch] and 7.00mm [0.276 inch].

*\* For IP65 version only*

**Detail of Non-IP65 Version Connectors and Hood**

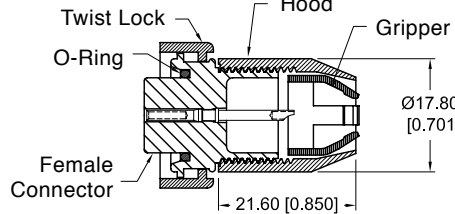
**Male Front Panel Mount Connector**

**Typical Part Number: KC316M2P0**



**Female Cable Connector**

**Typical Part Number: KC820F20J**



**Materials:**

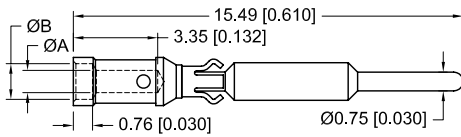
Hood and Gripper: Nylon, UL 94V-0.  
O-Ring: Silicon.

**Note:**

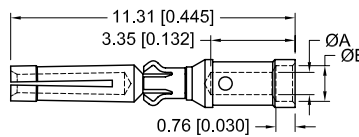
Hood design can accommodate jacketed cable diameters between 4.00mm [0.157 inch] and 7.00mm [0.276 inch].

**Removable Crimp Contacts for Version KC1222**

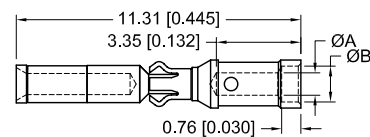
**MC422N**



**FC422N4 (Open Entry)**



**FC422N2 (Closed Entry)**



Male Contact	Female Contact	Wire Size AWG [mm <sup>2</sup> ]	ØA	ØB
MC422N	FC422N4 / FC422N2	22 [0.3] - 24 [0.25]	0.89 [0.035]	1.42 [0.056]

Please use correct wire size and it should be smaller than ØA of the contact (Consult factory for solder style removable contacts.)

**Recommended Tools for Crimp Contacts**

Contact Extraction Tool  
Shown for reference only



Contact Insertion Tool  
Shown for reference only



Cycle-Controlled Step Adjustable Hand Crimp Tool  
Shown for reference only



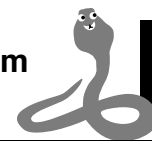
Contact Size	Contact Extraction Tool	Contact Insertion Tool	Hand Crimp Tool	Semi-Automatic Crimp Machine
Size 22	9081-3	9099-1	9507-0 with 9502-12 positioner (male contacts) 9507-0 with 9502-23 positioner (female contacts)	9550-1





# Ordering Information - Code Numbering System

Specify complete connector by following step 1 through step 4



**KING COBRA**  
Circular Connectors

Step	1	2	3	4	5	6
<b>Example</b>	<b>KC316</b>	<b>M2</b>	<b>PE</b>	<b>JE</b>	<b>/AA</b>	<b>- XXX</b>
<b>STEP 1: CONNECTOR VERSION</b> KC316 : King Cobra Series - Three (3) Size 16 Contacts						<b>STEP 6 - SPECIAL OPTIONS</b> Consult factory.
<b>STEP 2: CONNECTOR GENDER AND TYPE OF CONTACTS</b> M2 : Male panel mount, solder cup, fixed contacts. M3 : Male straight PCB mount, solder. M4 : Male right angle (90°) PCB mount, solder. F2 : Female cable connector, solder cup, fixed contacts. ( Select 0 in Step 3 ) F7 : Female cable connector, screw termination. Supplied with contacts. ( Select 0 in Step 3 )  Note : Consult factory for other connector versions.				<b>STEP 5: RoHS COMPLIANCE OPTIONS</b> /AA : Compliance per EU Directive 2002/95/EC (RoHS) Note : If RoHS legislation is not required, this step will not be used.		
				<b>STEP 4: HOODS</b> 0 : None. J : Hood with gripper, non-IP65. JE : Hood with gripper and boot, IP65.		
		<b>STEP 3: MOUNTING STYLES</b> 0 : None. S : Spacer for straight PCB mount connectors. S6 : Spacer with push-on fastener for straight PCB mount connectors. N : Push-on fastener for use with alignment bar and right angle (90°) PCB mount connectors. P : Front panel mount male connectors with jam nut, non-IP65. PE : Front panel mount male connectors with jam nut and gasket, IP65. PR : Rear panel mount male connectors, non-IP65. PRE : Rear panel mount male connectors with gasket, IP65.				

**King Cobra**  
**Version 316**

Step	1	2	3	4	5	6
<b>Example</b>	<b>KC820</b>	<b>F2</b>	<b>0</b>	<b>JE</b>	<b>/AA</b>	<b>- XXX</b>
<b>STEP 1: CONNECTOR VERSION</b> KC820 : King Cobra Series - Eight (8) Size 20 Contacts						<b>STEP 6 - SPECIAL OPTIONS</b> Consult factory.
<b>STEP 2: CONNECTOR GENDER AND TYPE OF CONTACTS</b> M2 : Male panel mount, solder cup, fixed contacts. M3 : Male straight PCB mount, solder. M4 : Male right angle (90°) PCB mount, solder. F2 : Female cable connector, solder cup, fixed contacts. ( Select 0 in Step 3 )				<b>STEP 5: RoHS COMPLIANCE OPTIONS</b> /AA : Compliance per EU Directive 2002/95/EC (RoHS) Note : If RoHS legislation is not required, this step will not be used.		
				<b>STEP 4: HOODS</b> 0 : None. J : Hood with gripper, non-IP65 JE : Hood with gripper and boot, IP65.		
		<b>STEP 3: MOUNTING STYLES</b> 0 : None. S : Spacer for straight PCB mount connectors. S6 : Spacer with push-on fastener for straight PCB mount connectors. N : Push-on fastener for use with alignment bar and right angle (90°) PCB mount connectors. P : Front panel mount male connectors with jam nut, non-IP65. PE : Front panel mount male connectors with jam nut and gasket, IP65. PR : Rear panel mount male connectors, non-IP65. PRE : Rear panel mount male connectors with gasket, IP65.				

**King Cobra**  
**Version 820**

Step	1	2	3	4	5	6
<b>Example</b>	<b>KC1222</b>	<b>M1</b>	<b>P</b>	<b>J</b>	<b>/AA</b>	<b>- XXX</b>
<b>STEP 1: CONNECTOR VERSION</b> KC1222 : King Cobra Series - Twelve (12) Size 22 Contacts						<b>STEP 6 - SPECIAL OPTIONS</b> Consult factory.
<b>STEP 2: CONNECTOR GENDER AND TYPE OF CONTACTS</b> M1 : Male panel mount, removable crimp contacts. F1 : Female cable connector, removable crimp contacts. ( Select 0 in Step 3 )  Note: Contacts ordered separately.				<b>STEP 5: RoHS COMPLIANCE OPTIONS</b> /AA : Compliance per EU Directive 2002/95/EC (RoHS) Note : If RoHS legislation is not required, this step will not be used.		
				<b>STEP 4: HOODS</b> 0 : None. J : Hood with gripper, non-IP65 JE : Hood with gripper and boot, IP65.		
		<b>STEP 3: MOUNTING STYLES</b> 0 : None. P : Front panel mount male connectors with jam nut, non-IP65. PE : Front panel mount male connectors with jam nut and gasket, IP65. PR : Rear panel mount male connectors, non-IP65. PRE : Rear panel mount male connectors with gasket, IP65.				

**King Cobra**  
**Version 1222**



## ASIA / PACIFIC SALES OFFICES

Singapore Factory, Sales and Engineering Office  
Singapore +65 6842 1419  
Japan +813 5812 7720  
South Korea +82 31 909 8047  
India +91 20 2439 4810  
Taiwan +886 2 2937 8775  
China +86 755 2643 7578  
    Shanghai +86 21 5078 2096  
    Shenzhen +86 755 2643 7578  
Malaysia +60 4 644 9688  
New Zealand +64 3 358 5154  
Australia +61 2 4362 3293

singapore@connectpositronic.com  
japan@connectpositronic.com  
korea@connectpositronic.com  
india@connectpositronic.com  
taiwan@connectpositronic.com  
shanghai@connectpositronic.com  
shenzhen@connectpositronic.com  
newzealand@connectpositronic.com  
australia@connectpositronic.com

## NORTH AMERICAN SALES OFFICES

United States, Springfield, Missouri  
Factory and Sales Office 800 641 4054  
Puerto Rico Sales Office 787 841 0920  
Mexico Sales Office 800 872 7674  
Canada Sales Office 800 327 8272

## EUROPEAN SALES OFFICES

France, Auch Factory and Sales 33 (0) 5 6263 4491  
Northern France Sales Office 33 (0) 1 4588 1388  
Southern France Sales Office 33 (0) 4 6772 8028  
Italy Sales Office 39 (0) 2 5411 6106  
Germany Sales Office 49 (0) 23 5163 4739

Europe & Middle East Technical Agents:  
Austria, Benelux, Denmark, Finland, Greece,  
United Kingdom, Ireland, Scotland, Slovenia,  
Spain, Sweden, Switzerland, Israel and Turkey

## POSITRONIC INDUSTRIES, INC

423 N Campbell Avenue, P O Box 8247,  
Springfield, MO 65801, USA  
Telephone: 1 417 866 2322  
Fax: 1 417 866 4115  
Email: info@connectpositronic.com

## POSITRONIC INDUSTRIES, SA

Zone Industrielle Est, 46 Route d'Engachies,  
F32020, Auch Cedex 9, France  
Telephone: 33 05 62 63 44 91  
Telecopieur: 33 (0) 5 62 63 51 17  
Email: contact@connectpositronic.com

## POSITRONIC ASIA PTE LTD

3014A Ubi Road 1 # 07-01 Singapore 408703  
Telephone: 65 6842 1419 Fax: 65 6842 1421  
Email: singapore@connectpositronic.com

[www.connectpositronic.com](http://www.connectpositronic.com)



**KING COBRA**  
Rugged & Economical Circular Connector Systems

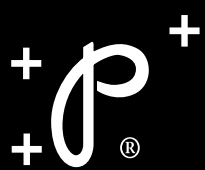


**Positronic Industries**  
[www.connectpositronic.com](http://www.connectpositronic.com)



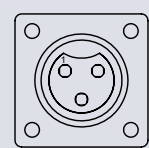


# BABY KING COBRA

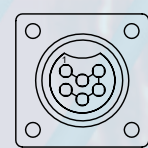


## Miniature, Economical & Rugged Circular Connector Systems

### Connector Versions



**BKC320:**  
Three (3) Size 20  
Contacts



**BKC620:**  
Six (6) Size 20  
Contacts

### Technical Characteristics

#### Materials and Finishes

**Insulator:** Glass-filled nylon, UL 94V-0.  
**Contacts:** Precision machined copper alloy with gold over nickel plate.  
**'O' Ring:** Silicon, UL 94V-0

#### Electrical Characteristics

**Contact Current Ratings**  
Size 20 Contacts: 7.5 amperes nominal.  
**Initial Contact Resistance per IEC 512-2, Test 2b.**  
Size 20 Contacts: 0.005 ohms, maximum.  
**Insulator Resistance per IEC 512-2, Test 3a.**  
Insulator: 5 G ohms, minimum.

#### Proof Voltage

Size 20 Contacts: 1000 V r.m.s.

#### Working Voltage

Size 20 Contacts: 250 V r.m.s.

#### Climatic Characteristics

Working temperature: -55°C to +125°C

#### Dust and Water Ingress:

IP65 with overmolded Assemblies (Consult Factory for details)

#### Mechanical Characteristics

**Polarization:** Provided by insulator.

#### Fixed Contacts:

Size 20 female contacts feature "Open Entry" 500 cycles design.

#### Contact Retention in Insulator:

Size 20 Contacts: 27 N [6 lbs.] minimum.

#### Locking System:

Threaded or Twist Locking Shroud

#### UL :

File E220614



**POSITRONIC**  
GLOBAL *Connector* SOLUTIONS

[www.connectpositronic.com](http://www.connectpositronic.com)

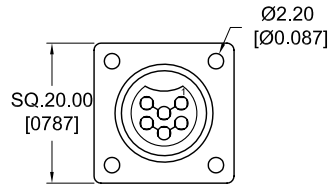
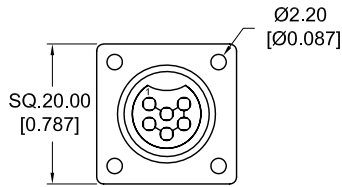
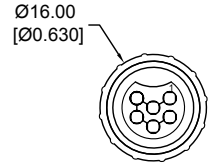
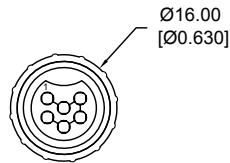
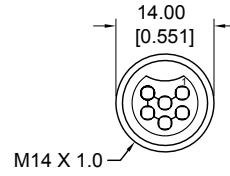
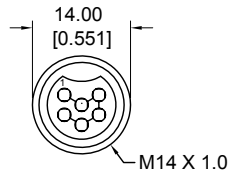
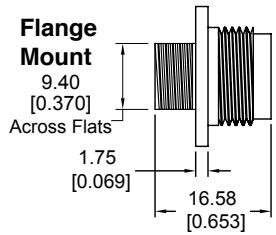
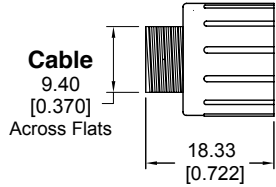
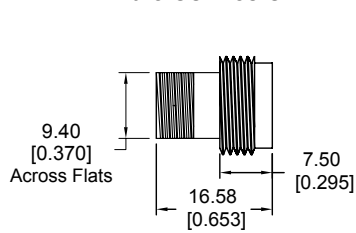


# Outline Dimensions

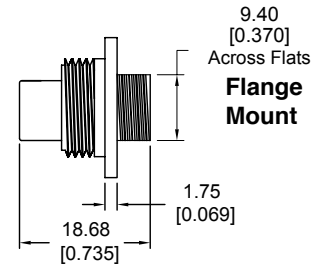
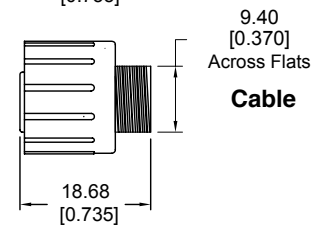
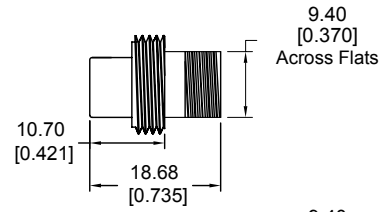


## THREADED LOCKING SYSTEM

### Male Connector

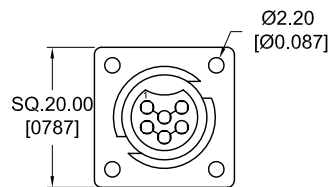
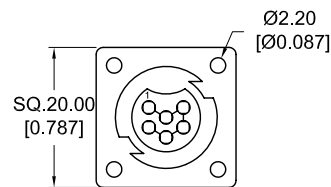
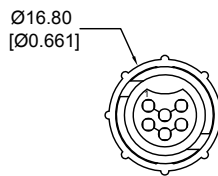
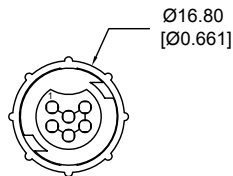
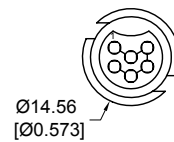
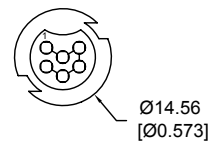
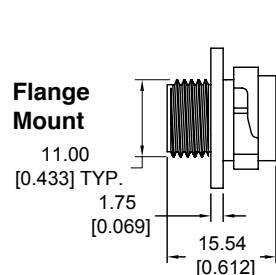
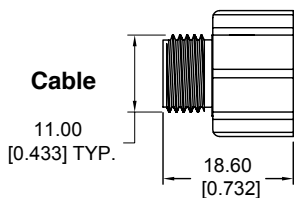
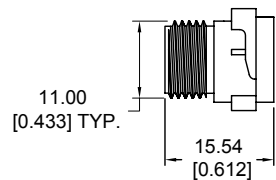


### Female Connector

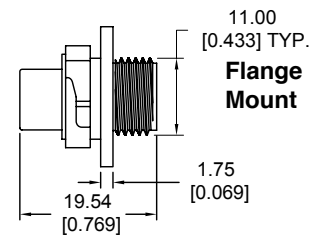
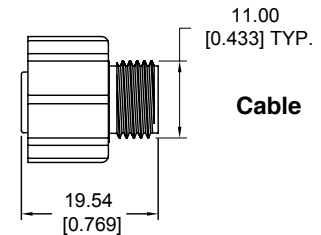
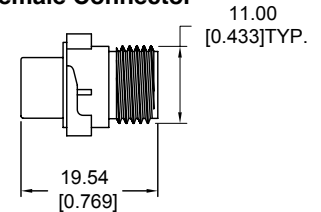


## TWIST LOCKING SYSTEM

### Male Connector



### Female Connector



Above Dimensions are same for both BKC320 and BKC620 versions.

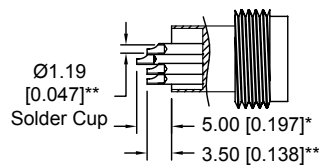




## Solder Cup Contacts

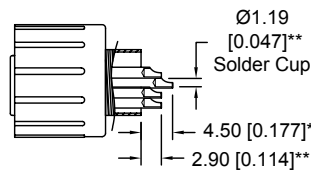
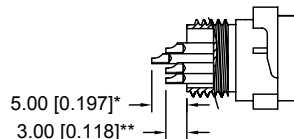
### Male Connector

Typical Part Number:  
BKC620M2T10



Typical Part Number:  
BKC620M2TW10

Specify code M2TW  
in Step 2

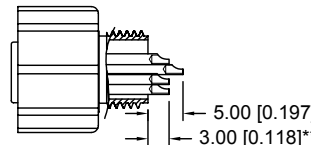


### Female Connector

Typical Part Number:  
BKC620F2T20

Typical Part Number:  
BKC620F2TW30

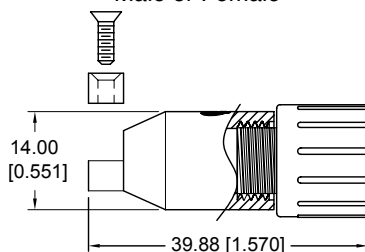
Specify code F2TW in  
Step 2



\* applicable for BKC620 only.  
\*\* applicable for BKC620 and BKC320.

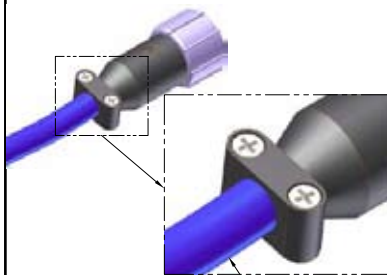
## ACCESSORIES

### Connector with Hood Male or Female



#### Materials:

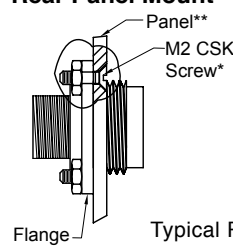
Hood & Clamp: Nylon, UL 94V-0.  
Screws: Steel with zinc plate.



Note: Hood design can accommodate jacketed cable Ø between 4.50mm [0.177] to 6.00mm [0.236]

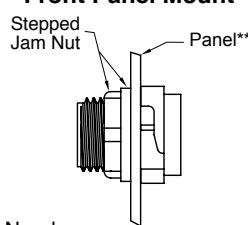
### Panel Mounting Option

#### Rear Panel Mount

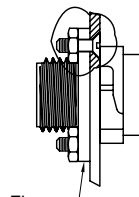


Typical Part Number:  
BKC320M2T1FT  
BKC620M2T1PF

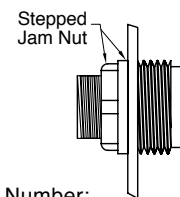
#### Front Panel Mount



Typical Part Number:  
BKC320M2TW1P  
BKC620M2TW1P



Typical Part Number:  
BKC320M2TW1PF  
BKC620M2TW1PF



Typical Part Number:  
BKC320M2T1P  
BKC620M2T1P

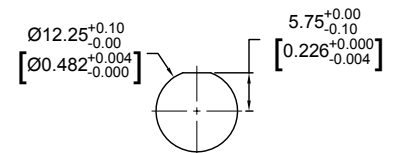
#### Materials:

Screws and Nuts: Steel with zinc plate.  
\*Screw and nut shown for reference only.  
\*\*Panel thickness 1.50 [0.059] max only.

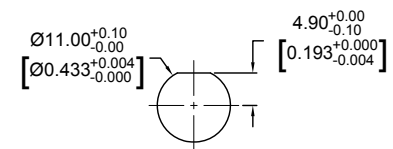
### Panel Cutout

#### Front Mount (Jam Nut)

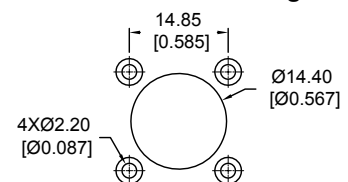
##### Twist Lock Cutout



##### Threaded Lock Cutout



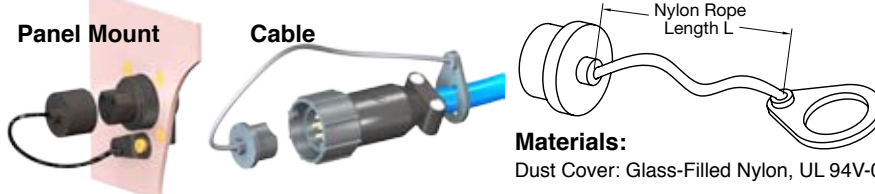
#### Rear Mount Cutout for Threaded Lock or Twist Lock Connector with Flange



### Dust Cover

#### Panel Mount

#### Cable



#### Materials:

Dust Cover: Glass-Filled Nylon, UL 94V-0.

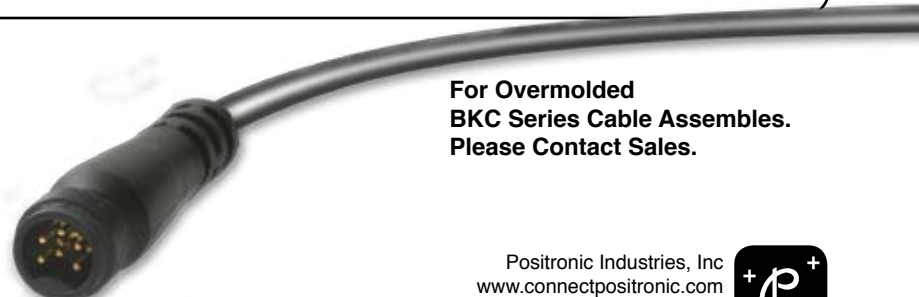
Ordering Part Numbers:  
(Female Dust Cover Part Number)  
5132-19-1 L=100[3.937]  
5132-19-2 L=35[1.378]

For Male Dust Cover, please consult factory.  
The above part numbers to be ordered separately.

Unless otherwise specified, dimensional tolerances are:

- 1) Male contact mating diameters : ±0.03 [0.001]
- 2) Contact termination diameters : ±0.08 [0.003]
- 3) All other diameters : ±0.13 [0.005]
- 4) All other dimensions : ±0.38 [0.015]

Dimensions are in millimeters [inches].  
All dimensions are subject to change.



**For Overmolded  
BKC Series Cable Assemblies.  
Please Contact Sales.**

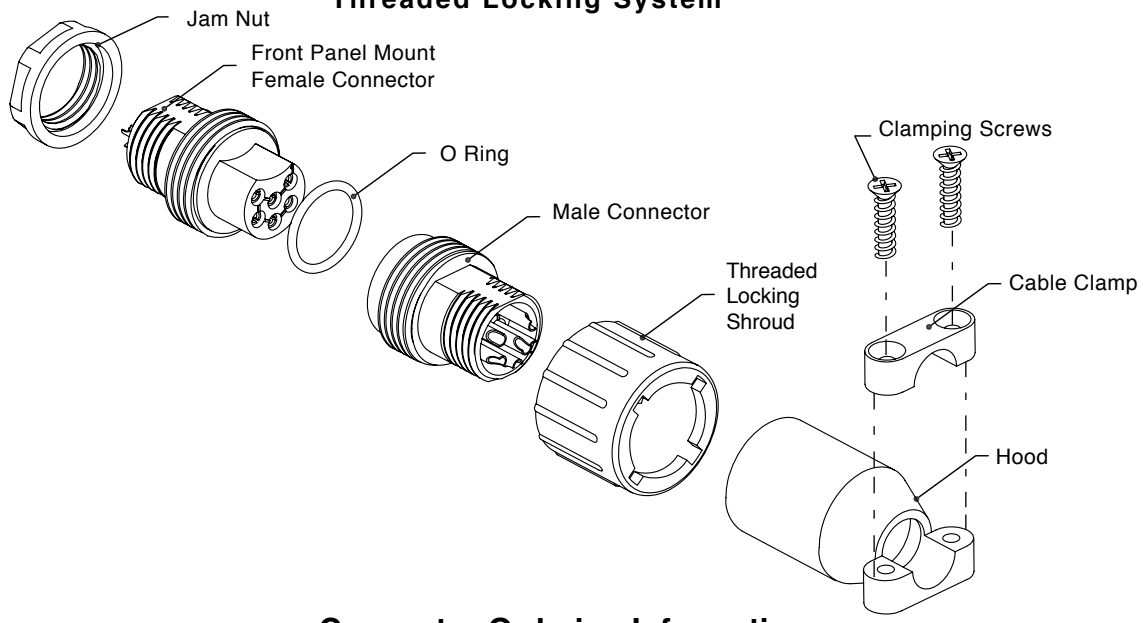




**TYPICAL CONNECTOR ASSEMBLY &  
ORDERING INFORMATION**

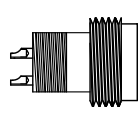
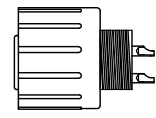
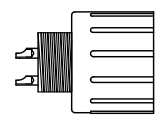
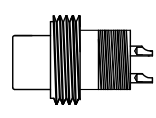
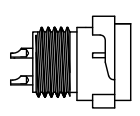
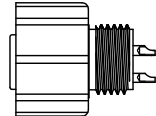
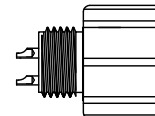
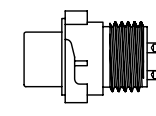


**Typical Connector Assembly  
Threaded Locking System**



**Connector Ordering Information**  
Specify complete connector by following step 1 through step 5.

<b>Step</b>	<b>1</b>	<b>2</b>	<b>3</b>	<b>4</b>	<b>5</b>
<b>Example</b>	<b>BKC620</b>	<b>F2T1</b>	<b>PF</b>	<b>/AA</b>	<b>- XXX</b>

<p><b>STEP 1: CONNECTOR VERSION</b> Baby King Cobra Series - BKC620 : Six (6) size 20 contacts. BKC320 : Three (3) size 20 contacts.</p>		<p><b>STEP 6 - SPECIAL OPTIONS</b> Consult factory for special options.</p>
<p><b>STEP 2: CONNECTOR GENDER AND TYPE OF CONTACTS</b></p> <p>M2T1 : Threaded Male, solder cup, fixed contacts. (Supplied Without Threaded Locking Shroud)</p> <p>F2T1 : Threaded Female, solder cup, fixed contacts. (Supplied Without Threaded Locking Shroud)</p> <p>M2T2 : Threaded Male, solder cup, fixed contacts. (Supplied With Threaded Locking Shroud)</p> <p>F2T2 : Threaded Female, solder cup, fixed contacts. (Supplied With Threaded Locking Shroud) (M2T1 mates only with F2T2 or F2T1.) (F2T1 mates only with M2T2 or M2T1.)</p>		<p><b>STEP 4: ENVIRONMENTAL COMPLIANCE OPTION</b> /AA : Compliance per EU Directive 2002/95/EC (RoHS) Example: BKC620M2T2P/AA. Note : If RoHS legislation is not required, this step will not be used. Example: BKC620M2T2P.</p>
<p>M2TW1 : Twist Male, solder cup, fixed contacts. (Supplied without Twist Locking Shroud)</p> <p>F2TW1 : Twist Female, solder cup, fixed contacts (Supplied without Twist Locking Shroud)</p> <p>M2TW3 : Twist Male, solder cup, fixed contacts. (Supplied with Twist Locking Shroud)</p> <p>F2TW3 : Twist Female, solder cup, fixed contacts. (Supplied with Twist Locking Shroud) (M2TW1 mates only with F2TW3 or F2TW1.) (F2TW1 mates only with M2TW3 or M2TW1.)</p>		<p><b>STEP 3: MOUNTING STYLES AND HOOD</b> 0 : None. P : Panel mount with jam nut and without flange. (Available in Front Mount version only) PF : Panel mount with Flange and without jam nut. (Available in Rear Mount version only) J : Hood.</p> <div style="display: flex; justify-content: space-around; align-items: center;"> <div style="text-align: center;">  M2T1         </div> <div style="text-align: center;">  F2T2         </div> <div style="text-align: center;">  M2T2         </div> <div style="text-align: center;">  F2T1         </div> </div> <div style="display: flex; justify-content: space-around; align-items: center; margin-top: 10px;"> <div style="text-align: center;">  M2TW1         </div> <div style="text-align: center;">  F2TW3         </div> <div style="text-align: center;">  M2TW3         </div> <div style="text-align: center;">  F2TW1         </div> </div> <p style="text-align: center; margin-top: 5px;">Above views applicable for both BKC620 and BKC320 versions.</p>

Positronic believes the data contained herein to be reliable. Since the technical information is given free of charge, the user employs such information at his own discretion and risk. Positronic assumes no responsibility for results obtained or damages incurred from use of such information in whole or in part.

**POSITRONIC INDUSTRIES, INC.**  
423 N Campbell Ave, PO Box 8247  
Springfield, MO 65801, USA  
Telephone (417) 866-2322  
Fax (417) 866-4115  
Toll Free (800) 641-4054  
info@connectpositronic.com

**POSITRONIC INDUSTRIES, S.A.S.**  
Zone Industrielle d'Engachies  
46 Route d'Engachies  
France 32020 Auch Cedex 9  
Telephone 33 (0) 5 6263 4491  
Fax 33 (0) 5 6263 5117  
contact@connectpositronic.com

**POSITRONIC ASIA PTE LTD.**  
Blk 3014A  
Ubi Road 1 #07-01  
Singapore 408703  
Telephone 65 6842 1419  
Fax 65 6842 1421  
singapore@connectpositronic.com