

REV. Q

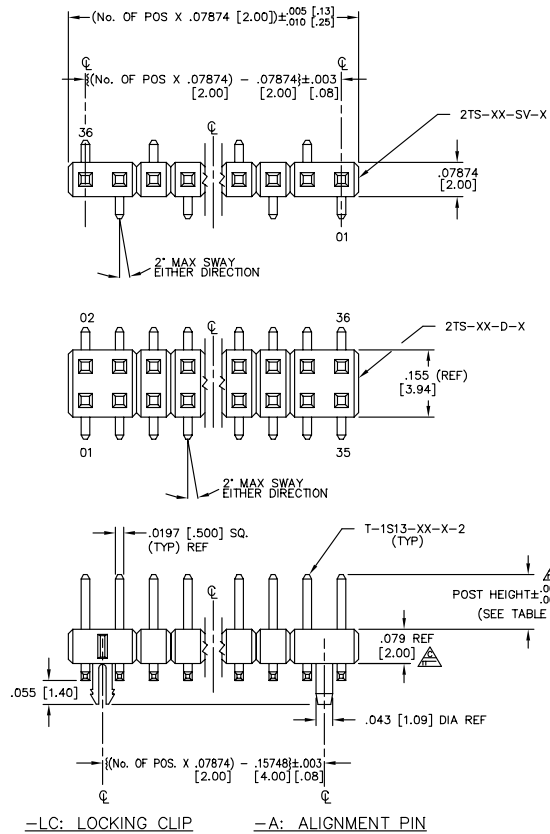
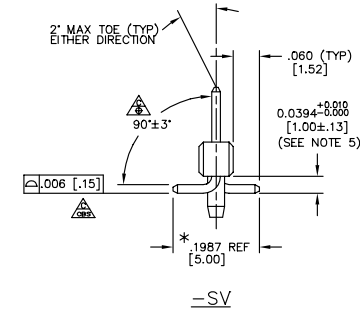
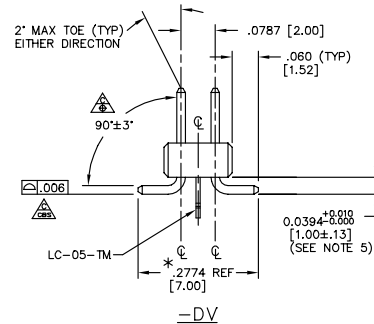
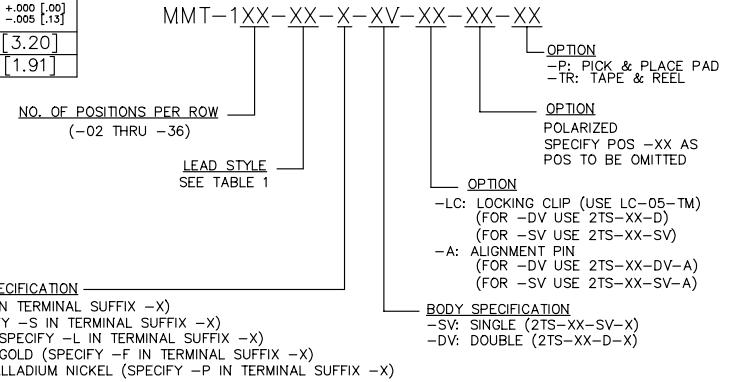


TABLE 1

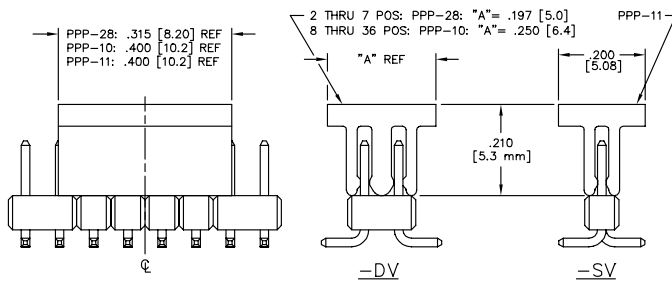
LEAD STYLE	PIN	OVERALL LENGTH	POST HEIGHT
-01	T-1S13-20-X-2	.323 [8.204]	.126 [3.20]
-02	T-1S13-20-X-2	*.323 [8.204]	.075 [1.91]

- NOTES:
1. PUSHOUT FORCE SHALL BE 2 lb MIN.
 2. Δ REPRESENTS A CRITICAL DIMENSION
 3. ALL DIMENSIONS IN BRACKETS [] TO BE IN MILLIMETERS.
 - * 4. TAILS WILL BE SHEARED ON -02 LEAD STYLE.
 5. MEASURED FROM BEND.

DIMENSIONS ARE IN INCHES		UNLESS OTHERWISE NOTED		TOLERANCES ARE:		TITLE:	DWG NO:
ONE PLACE DECIMALS: ± .1	THREE PLACE DECIMALS: ± .005	ANGLES: ± 5°	FOUR PLACE DECIMALS: ± .0020			2 mm TERMINAL STRIP VERTICAL (SINGLE/DOUBLE ROW) SURFACE MOUNT	MMT-1XX-XX-X-XV-XX-XX-XX
							SHEET 1 OF 1



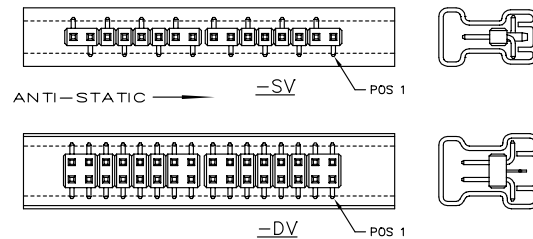
-P: PICK & PLACE PAD OPTION



Do not scale from this print

PROPRIETARY NOTE
THIS DOCUMENT CONTAINS APPROVED CONFIDENTIAL AND PROPRIETARY INFORMATION. IT IS THE PROPERTY OF SAMTEC AND IS NOT TO BE REPRODUCED OR TRANSMITTED IN ANY FORM OR BY ANY MEANS, ELECTRONIC OR MECHANICAL, INCLUDING PHOTOCOPYING, RECORDING, OR BY ANY INFORMATION STORAGE AND RETRIEVAL SYSTEM, WITHOUT THE EXPRESS WRITTEN CONSENT OF SAMTEC INC.

PACKAGE PARTS AS SHOWN



- NOTES:
- 1.) USE PT-1-24-01-17 AND (2) TP-24 FOR -SV.
 - 2.) USE PT-1-24-02-17 AND (2) TP-09 FOR -DV.
 - 3.) LOAD PARTS POS 1 FIRST IN SAME DIRECTION AS ARROW.

PLOT SCALE: 1= .1428

EXSPROD/VASSMELV_2mm MWTASM-V

samtec

810 PROGRESS BLVD., NEW ALBANY, INDIANA 47150
PHONE: (812) 944-8733 F.O. BOX 1147
CODE 55322

MADE BY: OREG DESIGNER 6-22-92
CHECKED BY: ECKERT 6-25-92

APPROVAL: DEM

MMT-1XX-XX-X-XV-XX-XX-XX
SHEET 1 OF 1