

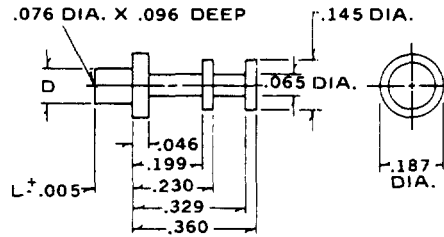


# MIL-T-55155 Terminals

ORDER BY PART NO.	"D" ±.002	L NOM.	RECOMMENDATIONS		
			BD THICK	MTG HOLE	SWAGE TOOL
4523 B	.112	.109	.062	+0.03	4523
4523 C	DIA.	.141	.094	.116	
4523 D		.172	.125	DIA.	

MIL-T-55155/12-7, 8, & 9

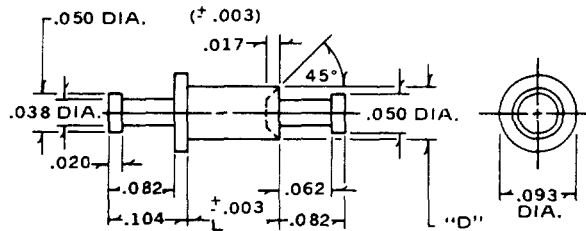
PART NO. 4523



ORDER BY PART NO.	"D" ±.002	L NOM.	RECOMMENDATIONS		
			BD THICK	MTG HOLE	SWAGE TOOL
4524 B	.072	.082	.062	+0.03	4524
4524 C	DIA.	.113	.094	.076	
4524 D		.145	.125	DIA.	

MIL-T-55155/13-1, 2, & 3

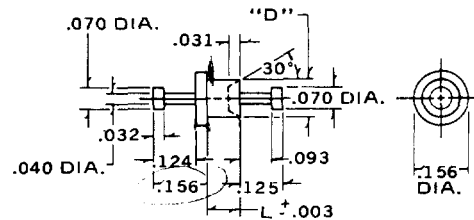
PART NO. 4524



ORDER BY PART NO.	"D" ±.002	L NOM.	RECOMMENDATIONS		
			BD THICK	MTG HOLE	SWAGE TOOL
4525 B	.116	.105	.062	+0.03	4525
4525 C	DIA.	.135	.094	.120	
4525 D		.165	.125	DIA.	

MIL-T-55155/13-4, 5, & 6

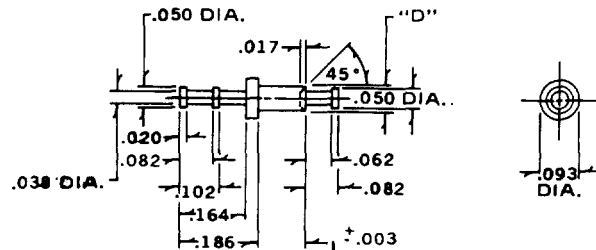
PART NO. 4525



ORDER BY PART NO.	"D" ±.002	L NOM.	RECOMMENDATIONS		
			BD THICK	MTG HOLE	SWAGE TOOL
4526 B	.072	.082	.062	+0.03	4526
4526 C	DIA.	.113	.094	.076	
4526 D		.145	.125	DIA.	

MIL-T-55155/14-1, 2, & 3

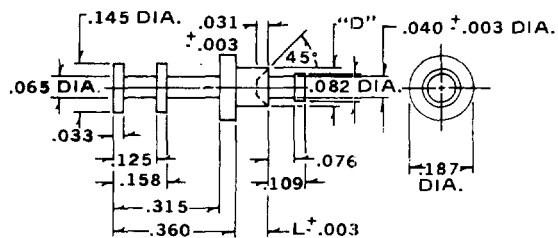
PART NO. 4526



ORDER BY PART NO.	"D" ±.002	L NOM.	RECOMMENDATIONS		
			BD THICK	MTG HOLE	SWAGE TOOL
4527 B	.114	.105	.062	+0.03	4527
4527 C	DIA.	.135	.094	.118	
4527 D		.165	.125	DIA.	

MIL-T-55155/14-4, 5, & 6

PART NO. 4527



Standard Plating Suffix to Part Number

See Page 93 for all plating options.

Terminal

-4 (Sb over Cu)

TOLERANCE: .xxx ±.005 (ALL DIMS. BEFORE PLATING)