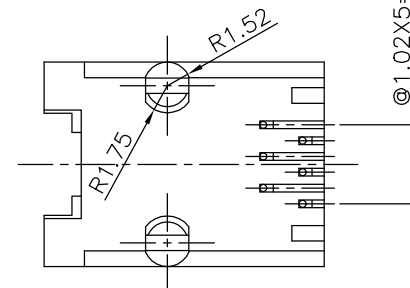
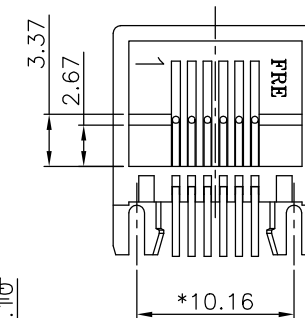
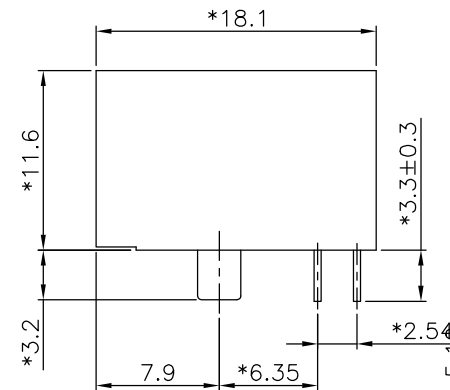
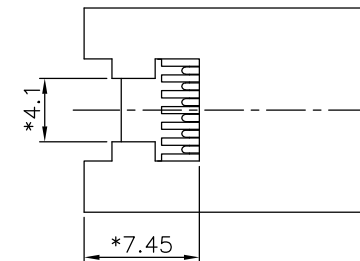
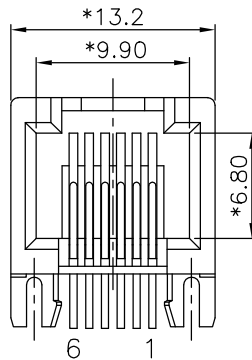


PC Board Layout
Component Side Shown



PART NUMBER: E536X-304XXX

2- 2C
4- 4C
6- 6C

1- 3u" 2- 6u" 3-15u"
4-30u" 5-50u"

MATERIAL OF HS'G :
WH- A05-1660 PA9T GREEN

| REVISION RECORD | | | | |
|-----------------|-----|-------------|-------------------|------|
| REV | ECO | DESCRIPTION | DRFT | CHKD |
| △ | | add new p/n | xlf 7/09/03* | |
| △ | | add new p/n | SHE 5/11/04* | |
| △ | | add new p/n | SAMMY 09/02/04 | |
| △ | | add new p/n | yan 11/11/04 | |
| △ | | add new p/n | yan 04/07/05 | |

NOTES:

ELECTRICAL:

- VOLTAGE RATING : 150 VAC RMS.
- CURRENT RATING : 1.5 AMP.
- CONTACT RESISTANCE : 20 MILLIOHMS MAX.
- INSULATION RESISTANCE: 1000 MEGOHMS MIN @ 500 VDC.
- DIELECTRIC STRENGTH : 1000 VAC RMS 60Hz, 1MIN.

MECHANICAL:

- HOUSING MATERIAL : GLASS FILLED POLYESTER UL94V-0.
- CONTACT MATERIAL : PHOSPHOR BRONZE 0.46mm.
: GOLD PLATING OVER NICKEL.
- OPERATING LIFE : 750 CYCLES MIN.
- PCB RETENTION PRE-SOLDER : 1 LB MIN.
- PCB RETENTION POST-SOLDER: 10 LBS MIN.

ENVIRONMENTAL:

- STORAGE : -40°C TO +85°C.
- OPERATION: -20°C TO 85°C.

MATES WITH MODULAR PLUG CONFORMING TO
FCC PART 68, SUBPART F.

PART NUMBER: E536X-304XGX

2- 2C
4- 4C
6- 6C

1- 3u" 2- 6u" 3-15u"
4-30u" 5-50u"

MATERIAL OF HS'G :
0- A06-0100 BK.
4- A05-0040 BK.
△5- A05-0130 BK
△R- A06-1570 GR.
△E- A05-0340 GR
△T- A05-1620 GREEN

| MM (INCH) | | DFTO CZH | DATE 02/08/03* | FULL RISE ELECTRONIC CO., LTD | |
|----------------------------|--|---------------|----------------|-------------------------------|--|
| TOLERANCES EXCEPT AS NOTED | | CHKD | DATE | TITLE | |
| | | MFO | DATE | 11.5mm SIDE PCB JACK 6P | |
| | | APPVL XLF | DATE 04/13/05* | DRAWING NO. GE533074 | |
| | | MATERIAL : | | SIZE REV | |
| | | QT'Y : | | A3 5 | |
| | | FINISH : | | /PART NO. SEE NOTE | |
| THIRD ANGLE PROJECTION | | SCALE : 3 : 1 | | DO NOT SCALE DRAWING | |
| | | SHEET | | OF | |