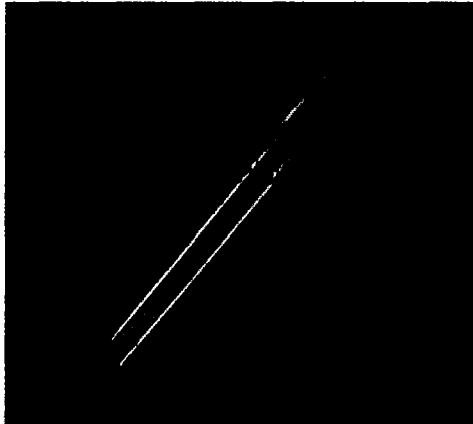
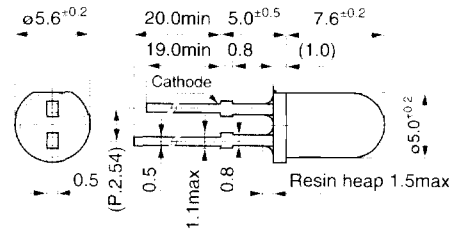


5ø round-type standard LEDs

SEL1010 series



Outline drawing (A)

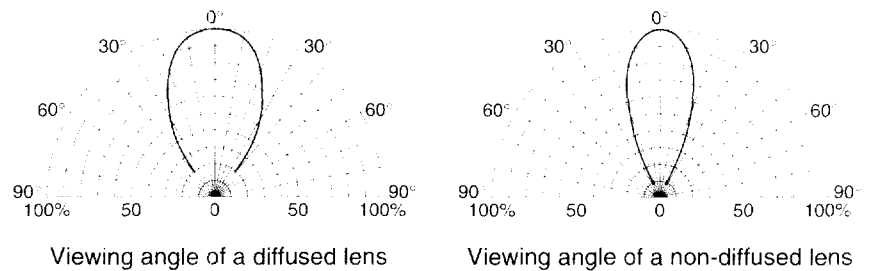


External dimensions: Unit: mm Tolerance: ±0.3

Absolute maximum ratings (Ta=25°C)

Symbol	Unit	Rating
I _F	mA	30
I _{FP}	mA	100
V _R	V	3
Top	°C	-30 to +85
Tstg	°C	-30 to +100

Viewing angle



Viewing angle of a diffused lens

Viewing angle of a non-diffused lens

Type No.	Display form (ø, mm)	Type of lens	Emitting color	Electrical characteristics (Ta=25°C)								Outline drawing
				V _F (V)		I _F (mA)		I _F (mA)		λ _p (nm)		
				typ	max	typ	max	typ	max	typ	Δλ	
SEL1110R	●5	Red tinted, diffused	Red	2.0		10	50	3	3.0	5	700	100
SEL1110S	●5	Red tinted, non-diffused							5.5			
SEL1110W	●5	Un-tinted, diffused							3.0			
SEL1210R	●5	Light red tinted, diffused	High intensity red	1.9		10	50	3	25.0	20	630	35
SEL1210S	●5	Light red tinted, non-diffused							30.0			
SEL1410G	●5	Light green tinted, diffused	Green	1.9		10	50	3	20.0	20	560	20
SEL1410E	●5	Light green tinted, non-diffused							40.0			
SEL1510C	●5	Un-tinted, non-diffused	Pure green	2.0	2.5	10	50	3	30.0		555	
SEL1710Y	●5	Yellow tinted, diffused	Yellow						3.0		570	40
SEL1710K	●5	Yellow tinted, non-diffused							5.0			
SEL1810D	●5	Orange tinted, diffused	Amber	1.9					12.0	10	610	35
SEL1810A	●5	Orange tinted, non-diffused							25.0			
SEL1910D	●5	Orange tinted, diffused	Orange						3.0		587	33
SEL1910A	●5	Orange tinted, non-diffused							5.5			