

# MICRO SWITCH

A DIVISION OF MINNEAPOLIS-HONEYWELL REGULATOR COMPANY  
 FREDERICK, MINNESOTA  
 FED. MFR. CODE 91929

# ACTUATOR-SWITCH

CATALOG LISTING

JX-58

JX-58

M

DRAWING NUMBER

88

88

ISSUE

88

REPLACES

RELEASE NO. SR 9424

CHECK 9 SEP 60

CHECK BLS

CHECK 12 SEP 60

CHECK RJP

CHECK 28 APR 67

CHECK 19 APR 68

CHECK 17 MAY 80

CHECK 8 MAR 95

CHECK 14 SEP 05

CHECK 13 MAY 96

CHECK 0015428

CHECK 14 SEP 05

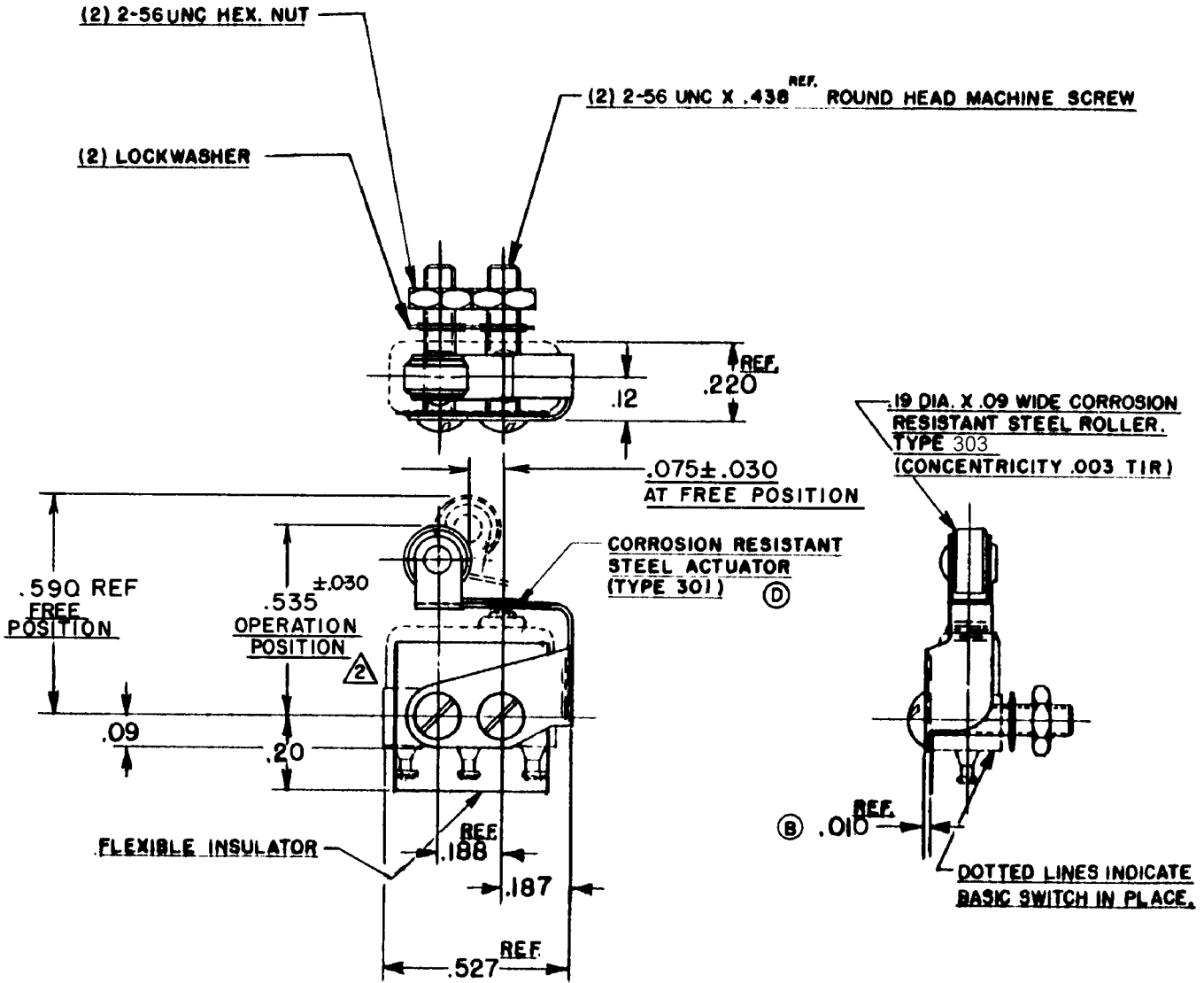
CHECK RJ

CHECK 9 SEP 60

CHECK 9 SEP 60

CHECK 9 SEP 60

CHECK 9 SEP 60



**NOTE -**

- 1- SCREWS, NUTS, LOCKWASHERS AND INSULATOR FURNISHED UNASSEMBLED.
- 2- SLIGHT ROTATION BETWEEN BASIC AND ACTUATOR MAY BE NECESSARY TO OBTAIN OPERATING POSITION

THIS DRAWING COVERS A PROPRIETARY ITEM AND IS THE PROPERTY OF MICRO SWITCH, A DIVISION OF MINNEAPOLIS-HONEYWELL REGULATOR CO. THIS DRAWING IS NOT TO BE COPIED OR USED WITHOUT THE APPROVAL OF MICRO SWITCH.

**CHARACTERISTICS WITH 15X1-T BASIC SWITCH INSTALLED**

OPERATING FORCE	-----12 OZ MAX
RELEASE FORCE	----- 2 OZ MIN
DIFFERENTIAL TRAVEL	----- .015 MAX
OVERTRAVEL	----- .015 MIN

**ELECTRICAL DATA**

CONTACT ARRANGEMENT	BREAK DISTANCE

SCALE 2 TO 1

DO NOT SCALE PRINT

UNLESS OTHERWISE SPECIFIED  
 DIMENSIONS ARE IN INCHES

**TOLERANCES ARE:**

ONE PLACE	(.0)	±.030
TWO PLACE	(.00)	±.015
THREE PLACE	(.000)	±.005
ANGLES		±

WEIGHT

REVISIONS

A	SR9424	LSD	13 JAN 61
B	CO15829	MBF	17 APRIL 61
C	CO22579	DMW	28 APR 67
D	CO22579	MBS	19 APR 68
E	CO47771	CJH	17 MAY 80
F	CO79303	DLT	8 MAR 95
G	CO82929	DLT	13 MAY 96
H	0015428	SPK	14 SEP 05

FO-50378