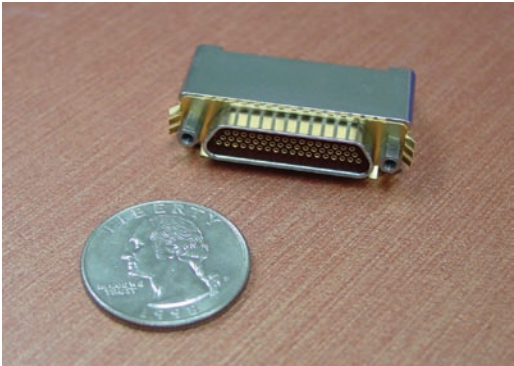




# MIL-DTL-83513 Microminiature D



MIL-DTL-83513 Micro-D filter connectors are designed to meet or exceed all applicable requirements of the military specification. These connectors are intermateable and interchangeable with the standard non-filtered connectors. Unique configurations are also available with customized shells and EMI ground springs.



Material and Finishes	
Shell	Aluminum alloy
Insulator	High grade plastic/epoxy
Contacts	Copper alloy, gold plate
Grommet & Seal	Silicon base elastomer
Capacitor	Barium Titanate
Inductor	Ferrite bead

## Part Number Description Code

P38 - 83513 - 25 - S - P - N

FILTER TYPE:  
Pi, L, C

PREFIX:

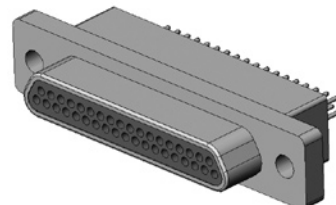
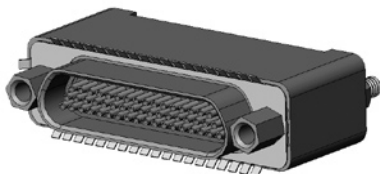
CONTACT ARRANGEMENT:  
9, 15, 21, 25, 31, 37, 51, 100

PLATING:  
C - Cadmium (Yellow Chromate)  
N - Electroless Nickel

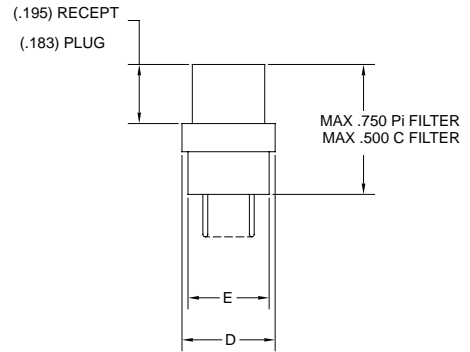
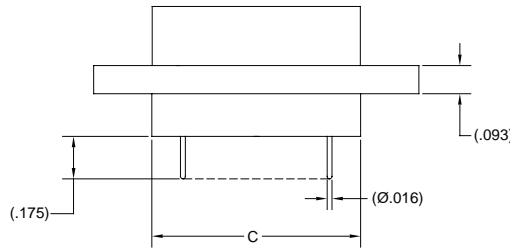
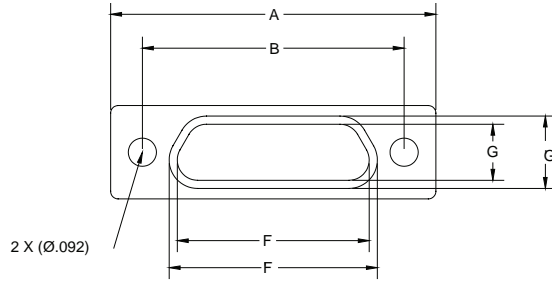
CONTACT TERMINATION:  
S - Solder Cup  
P - PC Tail  
F - Flying Leads  
R - Right Angle \*

CONTACT TYPE:  
P - Pin  
S - Socket

\* Consult factory for alternate plating options  
\* Consult factory for footprint dimensions

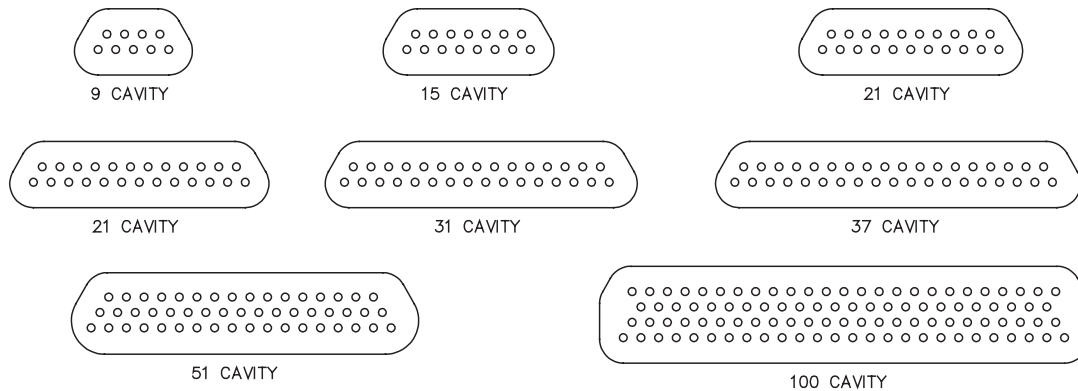


Sabritec provides specialty, enhanced performance connectors and cable assemblies and as such does not currently offer circular, rack and panel, or D-subminiature connectors that are listed on military standard Qualified Products Lists (QPL) per applicable detail specification sheets. Sabritec's connectors are fully intermateable with applicable QPL products and meet the applicable requirements of all military standards listed in this catalog.



Dimensions									
Cavity	A ± .010	B Basic	C + .010 -.018	D ± .010	E Max	F Basic Recept	F' Basic Plug	G Basic Recept	G' Basic Plug
9	.775	.565	.390	.298	.270	.3342	.338	.1852	.1848
15	.925	.715	.540	.298	.270	.4842	.4838	.1852	.1848
21	1.075	.865	.690	.298	.270	.6342	.6338	.1852	.1848
25	1.175	.956	.790	.298	.270	.7342	.7338	.1852	.1848
31	1.325	1.115	.940	.298	.270	.8842	.8838	.1852	.1848
37	1.475	1.265	1.090	.298	.270	1.0342	1.0338	.1852	.1848
51	1.425	1.215	1.040	.341	.310	.9842	.9838	.2282	.2278
100	2.160	1.800	1.432	.384	.360	1.3842	1.3838	.2712	.2708

## Insert Arrangements



\* Consult Factory For Additional or Custom Layouts