

## FIVE ROW FLEX-FIT™ FEMALE DIN 41612 CONNECTOR 160 POSITIONS



### PHYSICAL PROPERTIES

**INSULATION MATERIAL:** Glass filled thermoplastic rated UL 94V-0  
**COLOR:** Gray  
**OXYGEN INDEX:** 32  
**CONTACTS:** Copper alloy, nickel plate overall, 30 microinches gold plating in contact zone, tin/lead or gold in termination area

### ELECTRICAL PROPERTIES

**CURRENT RATING:** 2 Amps per pin  
**INSULATION RESISTANCE:**  $>1 \times 10^9$  Ohms  
**DIELECTRIC STRENGTH:**  $> 1000$  VRMS

### ENVIRONMENTAL PROPERTIES

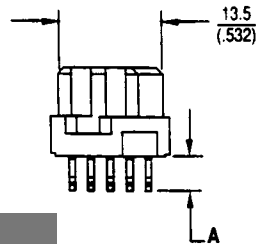
**TEMPERATURE RATING:** -55°C TO 125°C

### INITIAL INSERTION FORCE PER PIN

40 lbs. maximum when staked into glass epoxy PCB substrate 0.037" diameter finished through-hole

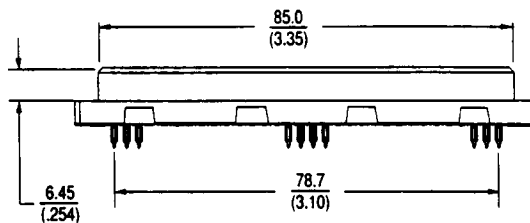
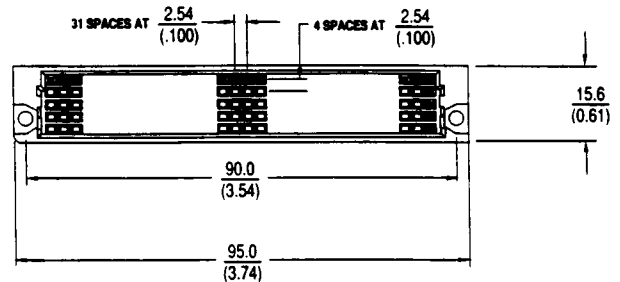
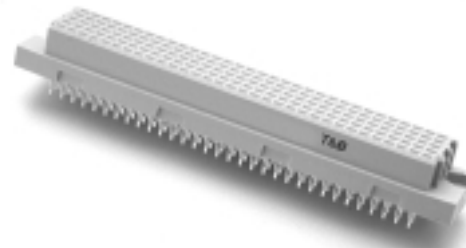
### RETENTION FORCE PER PIN

10 lbs. minimum when staked into glass epoxy PCB substrate 0.043" diameter finished through-hole

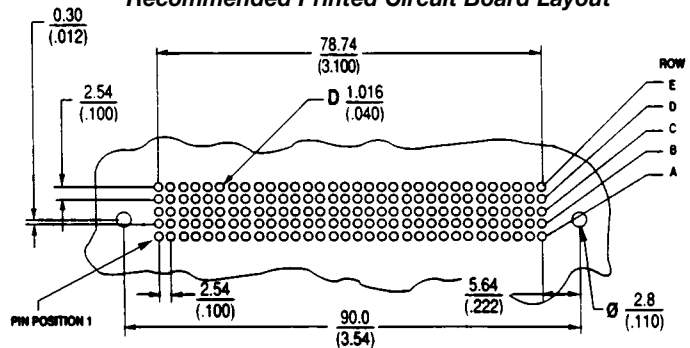


### Y TAIL PLATING

- 1 Tin/Lead
- 3 Gold Plate 30 Microinches thick min. (.200" from pin top)

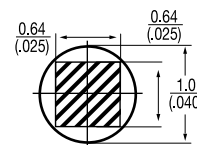


### Recommended Printed Circuit Board Layout



### Ordering Information

NO. OF CONTACTS	CONTACT LOADING	CATALOG NO.	TERMINATION STYLE	MM (INCHES)
160	a, b, c, d, e 1, 2, 3 -32	FVC160-081-2	A = 4.7	(.184)
160	a, b, c, d, e 1, 2, 3 -32	FVC160-091-2-Y	A = 13.0	(.512)
160	a, b, c, d, e 1, 2, 3 -32	FVC160-101-2-Y	A = 17.0	(.669)
160	a, b, c, d, e 1, 2, 3 -32	FVC160-111-2-Y	A = 20.9	(.823)



**Press-Fit Wire Wrap Post**  
 0.64 x 0.64  
 (.025 x .025)