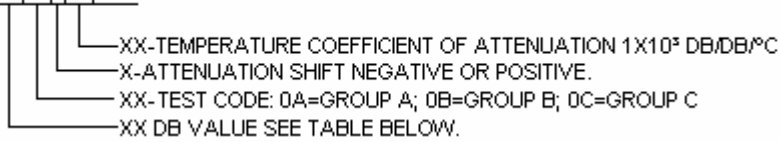


TITLE: SPECIFICATION CONTROL DRAWING

PART IDENTIFIER: HRT XXXXXXXXW3S



SHIFT (NEG)	DB VALUE	SHIFT (POS)	DB VALUE
-.003	1, 2, 3, 4, 5, 6, 7, 8, 10	.003	1, 3, 6
-.004	1, 2, 3, 4, 5, 6, 7, 8, 9, 10	.005	1, 3, 6
-.005	1, 2, 3, 4, 5, 6, 7, 8, 9, 10	.006	1, 3, 6
-.006	1, 2, 3, 4, 5, 6, 7, 8, 9, 10	.007	1, 2, 3, 6
-.007	1, 2, 3, 4, 5, 6, 7, 8, 9, 10	.008	6
-.008	1, 2, 3, 4, 5, 6	.009	6

DESCRIPTION: TEMPERATURE VARIABLE CHIP ATTENUATOR WITH HIGH RELIABILITY TESTING.

NOTE: SINGLE LOT AND DATE CODE AVAILABLE UPON REQUEST.

ASSEMBLY DWG: N/A

1.0 SPECIFICATIONS:

1.1 ELECTRICAL:

- 1.1.1 IMPEDANCE: 50 OHMS NOMINAL.
- 1.1.2 OPERATING FREQUENCY RANGE: DC - 6 GHZ.
- 1.1.3 ATTENUATION VALUE: SEE TABLE ABOVE.
- 1.1.4 ATTENUATION ACCURACY AT 25°C: ±0.5DB @ 1 GHZ.
- 1.1.5 VSWR: 1.30:1 MAX. @ 1 GHZ.
- 1.1.6 INPUT POWER:
 - NEGATIVE SHIFTING: 2 WATTS CW.
 - POSITIVE SHIFTING: 0.25 WATTS CW.
 - 1.1.6.1 FULL RATED POWER TO 125°C, DERATED LINEARLY TO 0 WATTS AT 150°C.
- 1.1.7 TEMPERATURE COEFFICIENT OVER OPERATING TEMPERATURE RANGE:
SEE TABLE ABOVE, TEMPERATURE COEFFICIENT TOLERANCE: ±0.001 DB/DB/°C.

1.2 MECHANICAL:

- 1.2.1 OUTLINE DWG: SEE SHEET 3.
- 1.2.2 WORKMANSHIP: PER MIL-PRF-55342.

1.3 ENVIRONMENTAL:

- 1.3.1 OPERATING TEMPERATURE RANGE: -55°C TO +150°C.

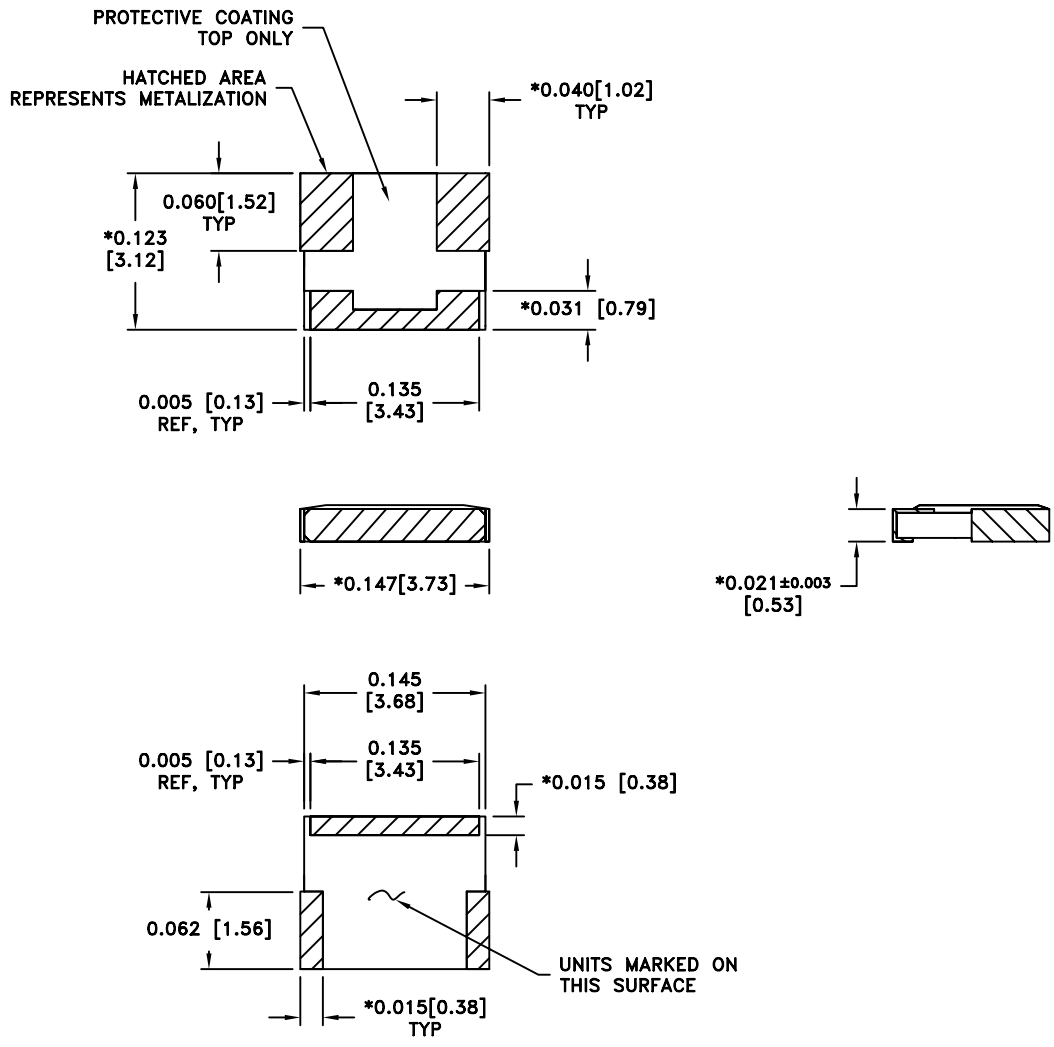
2.0 UNIT MARKING: DB VALUE (X), DIRECTION OF SHIFT (N OR P) AND TCA SHIFT (X).
LEGIBILITY AND PERMANENCY PER MIL-STD-130.

3.0 QUALITY ASSURANCE:

- 3.1 VERIFY 100% VISUAL PRE-CAP INSPECTION PERFORMED PER TP-8965.
- 3.2 PERFORM GROUP A, B AND/OR C TESTING AS INDICATED BY THE PART NUMBER PER TP-8965.
- 3.3 TEST DATA REQUIREMENTS:
 - 3.3.1 TEST DATA REQUIRED FOR CUSTOMER - SEE PARAGRAPH 5.0 OF TP-8965.
 - 3.3.2 DATA RETENTION - 24 MONTHS.
 - 3.3.3 TEST SAMPLES REQUIRED FOR CUSTOMER - SEE PARAGRAPH 5.0 OF TP-8965.

4.0 PACKAGING: STANDARD PACK PER 755W002. (SERIALIZED WAFFLE PACK)

EMC TECHNOLOGY 8851 SW OLD KANSAS AVE. STUART, FL 34997	CAGE CODE # 24602		DWG #	1009765000
	CHANGE NOTICE	EN 08-E1110	REV LVL	B
			SHEET	1 <u>OF</u> 2



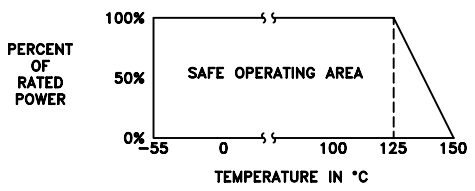
MECHANICAL SPECIFICATIONS:

SUBSTRATE:
MATERIAL - ALUMINA 96%, MIL-I-10.
TERMINAL:
MATERIAL - THICK FILM, NICKEL BARRIER,
SOLDER COATED.
RESISTIVE ELEMENT:
MATERIAL - THICK FILM.

METRIC EQUIVALENTS GIVEN IN [mm]
FOR REFERENCE INFORMATION ONLY

* DIMENSIONS APPLY BEFORE SOLDER. ALLOW
0.015 MAX FOR ALL PRETINNED SURFACES.

POWER RATING AND DERATING



 8851 SW OLD KANSAS AVE STUART, FL 34997 PHONE NO. (772)286-9300 FAX NO. (772)283-5286	UNLESS OTHERWISE SPECIFIED DIMENSIONS ARE IN INCHES TOLERANCES FRACT --- ANG --- XX --- XXX ±0.005 XXXX ---	THESE DRAWINGS AND SPECIFICATIONS ARE THE PROPERTY OF EMC TECHNOLOGY INC AND SHALL NOT BE DUPLICATED OR USED AS BASIS FOR THE MANUFACTURE OR SALE OF PARTS OR DEVICES WITHOUT PERMISSION.					
		CAGE CODE 24602	SCALE 10:1	DRAWN BY JG 12/9/08	CHECKED BY	APPROVED BY	
	REV B	CHANGE NOTICE EN 08-E1110	DRAWING NO 1009765000	SHEET 2 OF 2			