



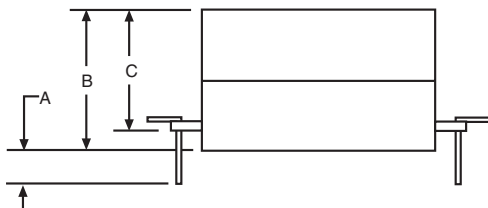
RL-7300

ULTRAHIGH INDUCTANCE, SHIELDED POWER POTS™

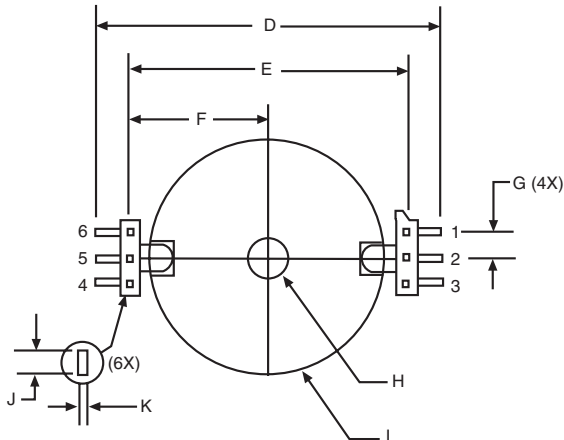


The RL-7300 offers a wide range of ultrahigh inductances from 10mH to 1H in 5 different sizes handling currents from 12mA up to 1A. This pot core design is capable of handling DC currents, while maintaining a stable inductance due to high saturation and self-shielding. This compact, easy-to-mount electrical component will be useful in telecommunication, audio, and automotive applications.

FRONT VIEW

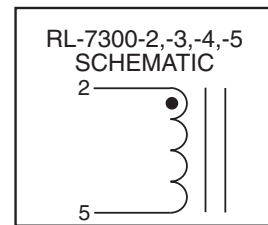
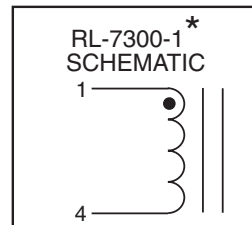


BOTTOM VIEW



Typical Applications:

- DC Chokes
- Differential Mode Chokes
- Filters
- Switching Circuits
- Low Power Supplies



RL-7300 SERIES *RL-7300-1 CONTAINS ONLY 4 PINS. PINS 2 AND 5 ARE OMITTED. SPACING BETWEEN PINS IS .138"

Dim. in Inches	A (MIN)	B (MAX)	C (MAX)	D (MAX)	E	F	G	H (MAX)	I (MAX)	J	K
RL-7300-1	.160	.337	.335	0.94	0.634	.317	N/A*	Ø.125	Ø 0.613	.03	.018
RL-7300-2	.160	.423	.420	1.16	0.846	.423	.134	Ø.125	Ø 0.774	.03	.018
RL-7300-3	.160	.535	.500	1.30	0.984	.492	.134	Ø.185	Ø 0.916	.03	.018
RL-7300-4	.130	.642	.610	1.45	1.122	.561	.134	Ø.216	Ø 1.070	.03	.018
RL-7300-5	.125	.748	.700	1.72	1.410	.706	.134	Ø.220	Ø 1.250	.03	.018



RENCO ELECTRONICS, INC.

595 International Place, Rockledge, FL 32955-4200 USA

(321) 637-1000 • Toll Free Engineering Hot line 800-645-5828

Fax: (321) 637-1600 Web Site: www.rencousa.com E-mail: sales@rencousa.com

RL-7300-1

Renco Part No.	Inductance @ 1 KHz (mH) ±15%	DCR Max (Ohms)	I Sat* (mA)	I rms (mA)
RL-7300-1-10	10	6	150	130
RL-7300-1-12	12	7	140	130
RL-7300-1-15	15	9	125	100
RL-7300-1-18	18	10	110	100
RL-7300-1-22	22	11	100	100
RL-7300-1-27	27	15	90	80
RL-7300-1-33	33	17	85	80
RL-7300-1-47	47	25	72	65
RL-7300-1-56	56	27	63	65
RL-7300-1-68	68	37	60	50
RL-7300-1-82	82	46	54	50
RL-7300-1-100	100	58	50	40
RL-7300-1-120	120	66	45	40
RL-7300-1-150	150	89	41	30
RL-7300-1-180	180	100	36	30
RL-7300-1-220	220	113	34	30
RL-7300-1-270	270	147	30	25
RL-7300-1-330	330	167	28	25
RL-7300-1-470	470	205	24	25
RL-7300-1-560	560	284	22	20
RL-7300-1-680	680	378	21	15
RL-7300-1-820	820	463	19	12.5
RL-7300-1-1000	1000	544	18	12.5

RL-7300-2

Renco Part No.	Inductance @ 1 KHz (mH) ±15%	DCR Max (Ohms)	I Sat* (mA)	I rms (mA)
RL-7300-2-10	10	3.5	285	250
RL-7300-2-12	12	4	245	250
RL-7300-2-15	15	4.5	220	250
RL-7300-2-18	18	6	195	210
RL-7300-2-22	22	6.8	175	210
RL-7300-2-27	27	9.1	160	210
RL-7300-2-33	33	11	140	165
RL-7300-2-47	47	16	120	130
RL-7300-2-56	56	18	120	125
RL-7300-2-68	68	24	110	100
RL-7300-2-82	82	26	83	100
RL-7300-2-100	100	36	83	80
RL-7300-2-120	120	40	74	80
RL-7300-2-150	150	55	64	65
RL-7300-2-180	180	60	61	65
RL-7300-2-220	220	82	60	50
RL-7300-2-270	270	117	55	40
RL-7300-2-330	330	131	50	40
RL-7300-2-470	470	167	38	40
RL-7300-2-560	560	218	35	30
RL-7300-2-680	680	246	33	30
RL-7300-2-820	820	277	31	30
RL-7300-2-1000	1000	361	31	25

RL-7300-3

Renco Part No.	Inductance @ 1 KHz (mH) ±15%	DCR Max (Ohms)	I Sat* (mA)	I rms (mA)
RL-7300-3-10	10	2.9	400	425
RL-7300-3-12	12	3	375	425
RL-7300-3-15	15	4	330	425
RL-7300-3-18	18	5	300	330
RL-7300-3-22	22	6	280	325
RL-7300-3-27	27	7	260	260
RL-7300-3-33	33	8	225	250
RL-7300-3-47	47	12	185	210
RL-7300-3-56	56	13	175	210
RL-7300-3-68	68	18	160	165
RL-7300-3-82	82	21	145	165
RL-7300-3-100	100	28	132	120
RL-7300-3-120	120	32	118	120
RL-7300-3-150	150	42	105	100
RL-7300-3-180	180	47	97	100
RL-7300-3-220	220	54	90	100
RL-7300-3-270	270	73	80	80
RL-7300-3-330	330	82	72	80
RL-7300-3-470	470	121	61	65
RL-7300-3-560	560	160	57	50
RL-7300-3-680	680	180	50	50
RL-7300-3-820	820	255	47	40
RL-7300-3-1000	1000	290	44	40

NOTES:

- * Saturation current for a 10% decrease in inductance value
- 1000V dielectric withstanding between winding and core
- Tested @ 1kHz, 0.1 Vrms, 25°C
- I rms is the average current for a 40°C rise above 25°C ambient
- Operating temperature range -55°C to +130°C
- Custom variations available



RENCO ELECTRONICS, INC.

595 International Place, Rockledge, FL 32955-4200 USA

(321) 637-1000 • Toll Free Engineering Hot line 800-645-5828

Fax: (321) 637-1600 Web Site: www.rencousa.com E-mail: sales@rencousa.com

RL-7300-4

Renco Part No.	Inductance @ 1 KHz (mH) ±15%	DCR Max (Ohms)	I Sat* (mA)	I rms (mA)
RL-7300-4-10	10	2.1	640	670
RL-7300-4-12	12	2.3	600	670
RL-7300-4-15	15	3.2	540	525
RL-7300-4-18	18	3.5	490	535
RL-7300-4-22	22	4	450	525
RL-7300-4-27	27	5.5	404	425
RL-7300-4-33	33	7.5	360	330
RL-7300-4-47	47	9.5	305	330
RL-7300-4-56	56	11.5	280	260
RL-7300-4-68	68	13	255	250
RL-7300-4-82	82	18	230	210
RL-7300-4-100	100	20	210	210
RL-7300-4-120	120	28	190	165
RL-7300-4-150	150	32	172	165
RL-7300-4-180	180	43	158	120
RL-7300-4-220	220	48	143	120
RL-7300-4-270	270	55	131	120
RL-7300-4-330	330	73	118	100
RL-7300-4-470	470	92	98	100
RL-7300-4-560	560	122	92	80
RL-7300-4-680	680	138	81	80
RL-7300-4-820	820	182	77	65
RL-7300-4-1000	1000	206	70	65

RL-7300-5

Renco Part No.	Inductance @ 1 KHz (mH) ±15%	DCR Max (Ohms)	I Sat* (mA)	I rms (mA)
RL-7300-5-10	10	1.5	980	1000
RL-7300-5-12	12	2	890	825
RL-7300-5-15	15	2.3	810	825
RL-7300-5-18	18	3.2	750	650
RL-7300-5-22	22	3.5	670	650
RL-7300-5-27	27	4	670	650
RL-7300-5-33	33	6	560	525
RL-7300-5-47	47	8	460	425
RL-7300-5-56	56	9	425	425
RL-7300-5-68	68	12.5	370	300
RL-7300-5-82	82	13.5	350	300
RL-7300-5-100	100	18	320	250
RL-7300-5-120	120	20	280	250
RL-7300-5-150	150	23	260	250
RL-7300-5-180	180	32	230	200
RL-7300-5-220	220	36	210	200
RL-7300-5-270	270	50	190	165
RL-7300-5-330	330	65	170	125
RL-7300-5-470	470	82	150	125
RL-7300-5-560	560	110	130	125
RL-7300-5-680	680	123	120	100
RL-7300-5-820	820	138	110	100
RL-7300-5-1000	1000	188	100	80

NOTES:

- * Saturation current for a 10% decrease in inductance value
- 1000V dielectric withstanding between winding and core
- Tested @ 1kHz, 0.1 Vrms, 25°C
- I rms is the average current for a 40°C rise above 25°C ambient
- Operating temperature range -55°C to +130°C
- Custom variations available



RENCO ELECTRONICS, INC.

595 International Place, Rockledge, FL 32955-4200 USA

(321) 637-1000 • Toll Free Engineering Hot line 800-645-5828

Fax: (321) 637-1600 Web Site: www.rencousa.com E-mail: sales@rencousa.com