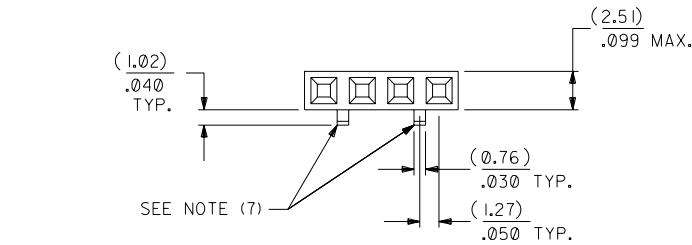


# OPTION D

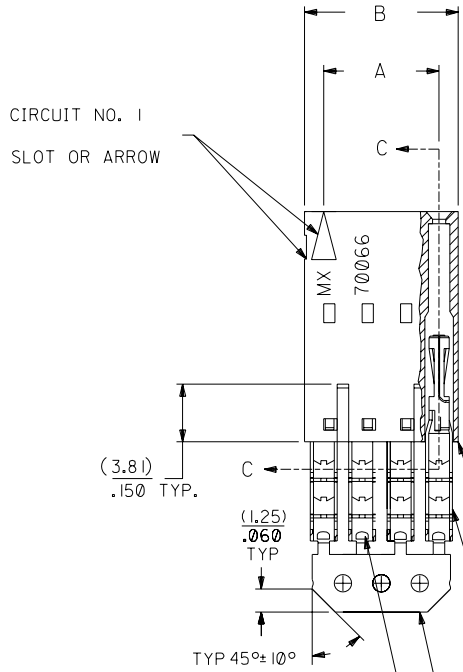
## NOTES:

- TO BE USED WITH (22) AWG. STRANDED WIRE WITH (1.35)/.053 DIA. MAX. INSULATION.
- SEE CHART FOR CIRCUIT SIZES.
- STANDARD PACKAGING PER PK-70873-0001. OPTIONAL PACKAGING MAY BE AVAILABLE, REQUEST DWG. PK-70400
- PARTS STACKABLE END TO END ON (2.54)/.100 CENTERS.
- REFER TO PRODUCT SPECIFICATION: PS-70400.
- SEE DWG. SDA-70400-\*\*\*\* (SHT. 5) FOR OPTIONAL HOUSING DETAILS.
- 4 CIRCUIT SHOWN. 3 - 25 CKT'S. HAVE (2) RIBS.
- TO MATE WITH MOLEX PART NO'S.: 70004-\*\*\*\*, 70013-\*\*\*\*

9) 2 CIRCUIT ASSEMBLIES SUPPLIED AS GROUPED PAIRS.



CIRCUIT NO. 1  
SLOT OR ARROW



I.D. SLOT CODE TO WIRE GAUGE CHART	
I.D. SLOT CODE	WIRE GAUGE
D	22 AWG.

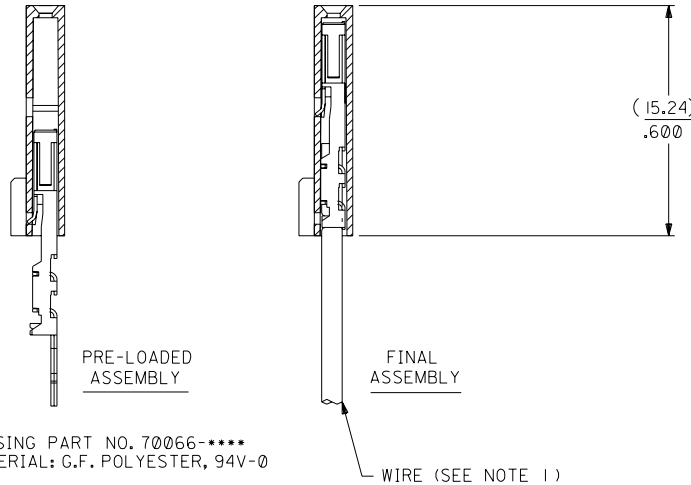
PLATING CODE (STRIPE ON CARRIER STRIP)	
PLATING	COLOR
15 GOLD	YELLOW

15 GOLD - .000015 MIN. GOLD IN SELECT AREA WITH .000075 MIN. TIN IN SELECT AREA OVER .000050 MIN. NICKEL OVER-ALL.

\*THE PRIMARY SHIPPING CARTON WILL BE LABELED "COMPLIANT TO ROHS DIRECTIVE 2002/95/EC AND ELV ANNEX II OF DIRECTIVE 2000/53/EC". CARTONS WITHOUT THIS LABEL MAY CONTAIN PRODUCT WITH LEAD.



## SECTION C-C



HOUSING PART NO. 70066-\*\*\*\*  
MATERIAL: G.F. POLYESTER, 94V-0

TERMINAL PART NO. 70028-\*\*\*\*  
MATERIAL: PHOSPHOR BRONZE  
PLATING PER ES-88-\*\*\*

WIRE (SEE NOTE 1)

CKT. SIZE	A	B	EDP. NO.	ENG. NO.
2	( 2.54 ) .100	( 5.05 ) .199	14-56-7026	A-70400-3245
3	( 5.08 ) .200	( 7.59 ) .299	14-56-7036	A-70400-3246
4	( 7.62 ) .300	( 10.13 ) .399	14-56-7046	A-70400-3247
5	( 10.16 ) .400	( 12.67 ) .499	14-56-7056	A-70400-3248
6	( 12.70 ) .500	( 15.21 ) .599	14-56-7066	A-70400-3249
7	( 15.24 ) .600	( 17.75 ) .699	14-56-7076	A-70400-3250
8	( 17.78 ) .700	( 20.29 ) .799	14-56-7086	A-70400-3251
9	( 20.32 ) .800	( 22.83 ) .899	14-56-7096	A-70400-3252
10	( 22.86 ) .900	( 25.37 ) .999	14-56-7106	A-70400-3253
11	( 25.54 ) 1.000	( 27.91 ) 1.099	14-56-7116	A-70400-3254
12	( 27.94 ) 1.100	( 30.45 ) 1.199	14-56-7126	A-70400-3255
13	( 30.48 ) 1.200	( 32.99 ) 1.299	14-56-7136	A-70400-3256
14	( 33.02 ) 1.300	( 35.53 ) 1.399	14-56-7146	A-70400-3257
15	( 35.56 ) 1.400	( 38.07 ) 1.499	14-56-7156	A-70400-3258
16	( 38.01 ) 1.500	( 40.61 ) 1.599	14-56-7166	A-70400-3259
17	( 40.64 ) 1.600	( 43.15 ) 1.699	14-56-7176	A-70400-3260
18	( 43.18 ) 1.700	( 45.69 ) 1.799	14-56-7186	A-70400-3261
19	( 45.72 ) 1.800	( 48.23 ) 1.899	14-56-7196	A-70400-3262
20	( 48.26 ) 1.900	( 50.77 ) 1.999	14-56-7206	A-70400-3263
21	( 50.80 ) 2.000	( 53.31 ) 2.099	14-56-7216	A-70400-3264
22	( 53.34 ) 2.100	( 55.85 ) 2.199	14-56-7226	A-70400-3265
23	( 55.88 ) 2.200	( 58.39 ) 2.299	14-56-7236	A-70400-3266
24	( 58.42 ) 2.300	( 60.93 ) 2.399	14-56-7246	A-70400-3267
25	( 60.96 ) 2.400	( 63.47 ) 2.499	14-56-7256	A-70400-3268

LT. REVISIONS	DESCRIPTION	DATE	BY
D	LEAD FREE LCP2004-1769 RWHITE 04/03/22		AAB
CI	ADD CARRIER CHAMF ECN #UDT1998-0280 05/20/98 LMCGRATH		AAB

DIMENSIONS SHOWN (METRIC) INCH UNLESS OTHERWISE SPECIFIED TOLERANCES: ANGULAR ± 1/2°		
3 PLACE	INCH	METRIC
± .010	---	---
± .014	± 0.25	---
---	± 0.35	---

REVISIONS	REVISE ONLY ON CAD SYSTEM
TITLE	ASSEMBLY, SL CONNECTOR (SINGLE ROW- (2.54)/.100 GRID)
PART NO.	SDA-70400-3245-3268
DRWG. NO.	SDA-70400-3245-3268
FILE NAME	74003245.DGN
DATE	10/26/87
SHEET NO.	60532
U.S.A.	
MOLEX INCORPORATED	
LITSE, ILL.	
THIS DRAWING CONTAINS INFORMATION THAT IS PROPRIETARY TO MOLEX INC. AND SHOULD NOT BE USED WITHOUT WRITTEN PERMISSION.	