

**0.200" PITCH
INSULATION DISPLACEMENT
SERIES PCB7A**



PHYSICAL PROPERTIES

Housing

HOUSING MATERIAL: Polypropylene
FLAMMABILITY: UL94V-2
COLOR: Black

Terminal

TUBULAR CONTACT:
PC CONTACT: Phosphor Bronze with Bright Tin or Gold over Nickel plating

SCREW:

CLAMP:

Mechanical

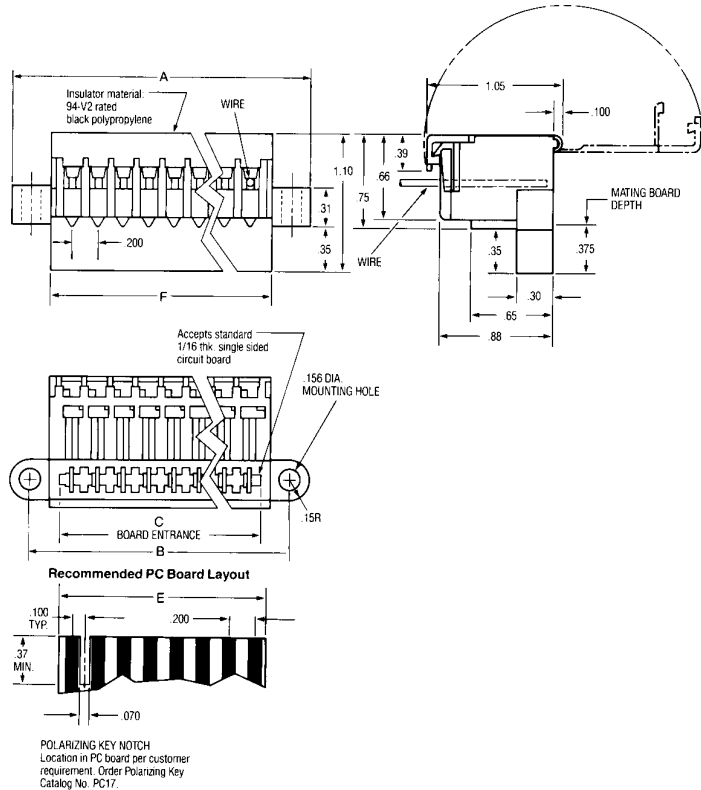
PITCH (TERMINAL SPACING): .200"
MOUNTING SCREW SIZE: #6
WIRE STRIP LENGTH: DO NOT STRIP
RECOMMENDED TIGHTENING TORQUE:
RECOMMENDED SCREWDRIVERS: Special Hand Tool
Catalog No. PCHT7
BOARD INSERTION FORCE (TYP.) PER CKT.: 6 oz.
(170g)
BOARD SEPARATION FORCE (TYP.) PER CKT.: 2 oz.
(57g)
DURABILITY: Passes MIL-C-21097: 500 cycles

ELECTRICAL PROPERTIES

MAXIMUM CURRENT: 7A
OPERATING VOLTAGE: 250V
WIRE RANGE: #14-22 AWG
DIELECTRIC WITHSTAND: 3200V
INSULATION RESISTANCE: 10¹¹ ohms
CONTACT RESISTANCE: 2.2 milliohms

ENVIRONMENTAL PROPERTIES

OPERATING TEMPERATURE RANGE:
-65°C to +105°C
(-85°F to +221°F)



Ordering Information

CATALOG # (SPECIFY X)	NO. OF CIRCUITS	A	B	C	E	F
PCB7A06SX	06	1.93	1.63	1.180	1.160	1.32
PCB7A08SX	08	2.33	2.03	1.580	1.560	1.72
PCB7A10SX	10	2.73	2.43	1.980	1.960	2.12
PCB7A12SX	12	3.13	2.83	2.380	2.360	2.52
PCB7A14SX	14	3.53	3.23	2.780	2.760	2.92
PCB7A16SX	16	3.93	3.63	3.180	3.160	3.32
PCB7A18SX	18	4.33	4.03	3.580	3.560	3.72
PCB7A20SX	20	4.73	4.43	3.980	3.960	4.12
PCB7A22SX	22	5.13	5.23	4.780	4.760	4.52
PCB7A24SX	24	5.53	5.23	4.780	4.760	4.92
PCB7A26SX	26	5.93	5.63	5.180	5.160	5.32

X	WIRE SIZE (SOLID OR STRANDED)
1	#20 & #22 AWG
2	#18 & #16 AWG
3	#14 AWG

*NOTE: For optional Gold-over-Nickel plating on contacts (instead of standard bright tin), change the letter "S" of the catalog number to "A."

BUCHANAN.

