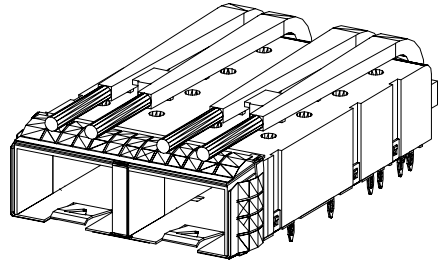
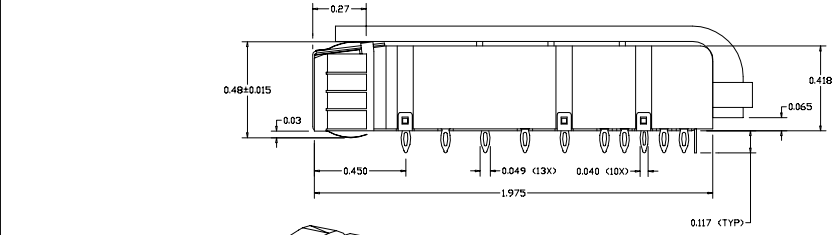
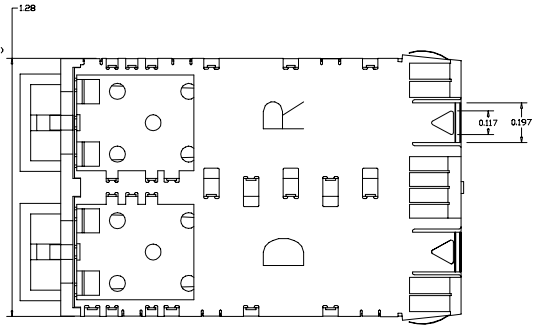
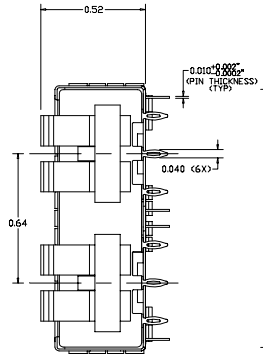
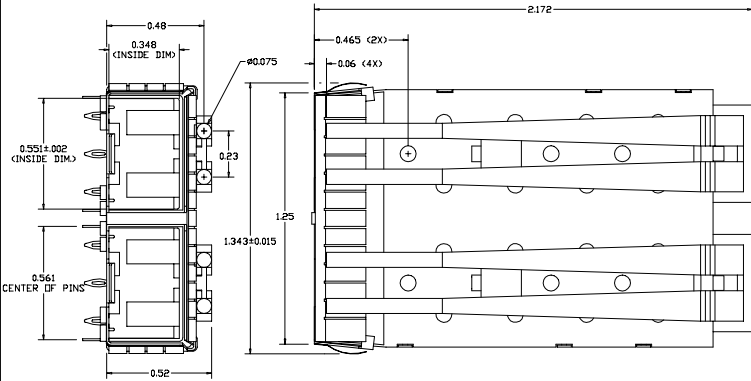


| REVISION AND CHANGE EFFECTIVITY DATE | | | | |
|--------------------------------------|-----|-------------|------|--------|
| LTR. | ECN | DESCRIPTION | DATE | APP'D. |
| | | | | |



ORDERING INFO:

DM7050-2-D-L-X

SERIES
 DENOTES 2 PORTS
 DENOTES DIE CAST DESIGN
 L - WITH LIGHT PIPES INSTALLED (2 PAIRS)
 BLANK (OMIT) - WITHOUT LIGHTPIPES

PLATING OPTIONS:
 ALL ARE ROHS COMPLIANT

- R FOR 100µIN MATTE TIN OVER 50µIN NICKEL
 NOT INTENDED FOR REFLOW
 WAVE SOLDER ONLY - WAVE TEMP. 260°C FOR 6 SEC. MAX
- G FOR FLASH GOLD OVER 50µIN NICKEL
 WITH LIGHTPIPE; NOT INTENDED FOR REFLOW
 WAVE SOLDER ONLY - WAVE TEMP. 260°C FOR 6 SEC. MAX
 WITHOUT LIGHTPIPE; CAGE IS REFLOW COMPATIBLE
 MAX REFLOW TEMP. 260°C
- N FOR 100µIN NICKEL
 WITH LIGHTPIPE; NOT INTENDED FOR REFLOW
 WAVE SOLDER ONLY - WAVE TEMP. 260°C FOR 6 SEC. MAX
 WITHOUT LIGHTPIPE; CAGE IS REFLOW COMPATIBLE
 MAX REFLOW TEMP. 260°C

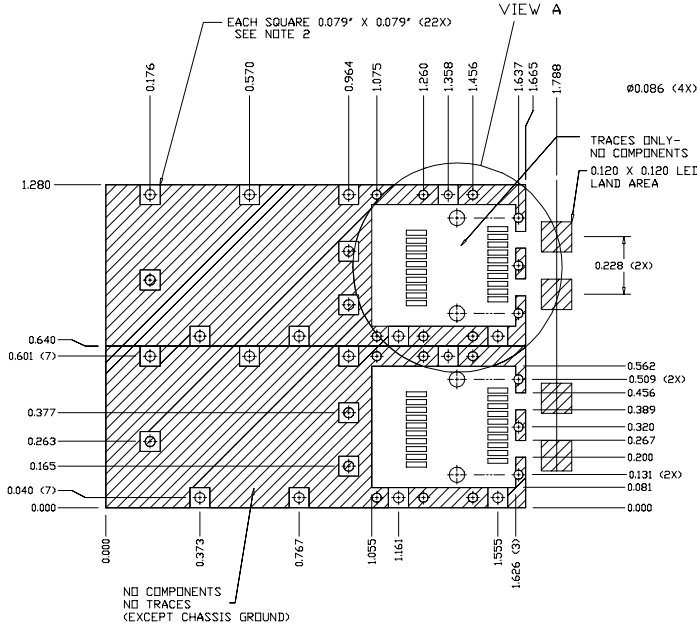
MATERIAL AND FINISH:

- 1) HOUSING: ZINC DIE CAST - SEE ORDERING INFO FOR PLATING OPTIONS
- 2) BOTTOM SHIELD: .010" THICK BRASS, FULL HARD. - SEE ORDERING INFO FOR PLATING OPTIONS
 TOLERANCE: +0.002"/-0.0002" (INCLUDING PINS AND GROUNDING TABS)
- 3) LIGHT PIPE: CLEAR POLYCARBONATE - NOT INTENDED FOR REFLOW - WAVE SOLDER ONLY
- 4) SHOWN WITH LIGHTPIPES
- 5) CAGE IS STAMPED "R" FOR ROHS COMPLIANCE
- 6) OPERATING AND STORAGE TEMPERATURE: -40°C TO +160°C W/OUT LIGHTPIPE, +125°C WITH LIGHTPIPE
- 7) TEMPERATURE FROM WAVE SOLDER NOT TO EXCEED 125°C AT LIGHTPIPE
- 8) GASKET: 0.002" THICK BERYLLIUM COPPER
 GASKET IS SPOT WELDED ONTO CAGE-SEE ORDERING INFO FOR PLATING OPTIONS

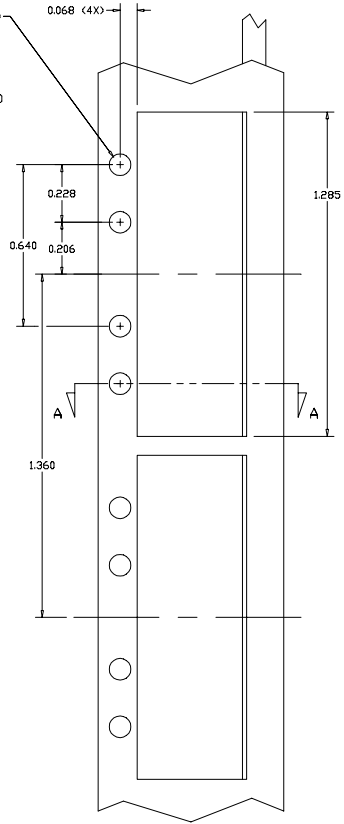


| | | | | | |
|---|--|-----------------------------|-------------------------------------|---|--|
| DO NOT SCALE DRAWING. | | EXPERIMENTAL NO: | | DIVISION ASSIGNED: dataMate Division | |
| TOLERANCE UNLESS OTHERWISE SPECIFIED | MATERIAL: | DATE: | DRAWN BY: A. PIRILLIS 04/18/08 | | |
| METRIC INCHES | SEE NOTES | DATE: | CHECKED BY: B. SKEPNEK 04/18/08 | | |
| FRACTIONAL DEC. XX ± .010 | FINISH: | DATE: | ENGR. APPROVAL: J. NOWAK 04/18/08 | | |
| ± .005 | | DATE: | APPROVED BY: A. CHIAPPETTA 04/18/08 | | |
| ANGLES ± | TOOLING DWG □ | PART NO. CLASSIFICATION: | | | |
| ± | PART DWG □ | PART NO. CLASSIFICATION: | | | |
| BREAK SHARP EDGES REMOVE ALL BURRS | TITLE: SFP+ EMI CAGE (IMPROVED) 2 PORT MODULE WITH GASKET | | | | |
| THE INFORMATION DISCLOSED IN THIS DOCUMENT IS PROPRIETARY TO METHODE ELECTRONICS, INC. AND MAY NOT BE USED FOR MANUFACTURE OR ANY OTHER PURPOSE WITHOUT THE WRITTEN CONSENT OF METHODE. DETAILS SUBJECT TO CHANGE AS THEY MAY VARY WITH RESPECT TO PRODUCT IMPROVEMENT. | | | | | |
| SIZE: C | CODE IDENT. | DWG. NUMBER: DM7050-2-D-L-X | Rev. | SCALE: SHIT.1 OF 2 | |

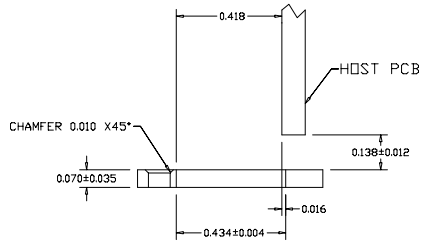
| REVISION AND CHANGE EFFECTIVITY DATE | | | | |
|--------------------------------------|-----|-------------|------|--------|
| LTR. | ECN | DESCRIPTION | DATE | APP'D. |
| | | | | |



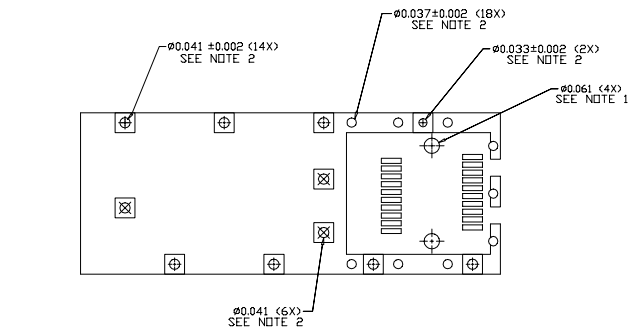
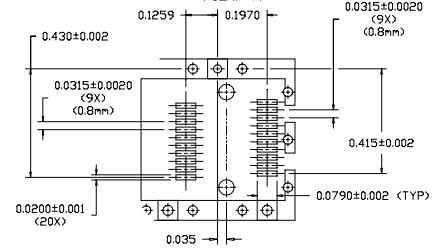
RECOMMENDED PANEL CUTOUT



SECTION A-A



VIEW A



- NOTES:
- 1) THRU HOLES, PLATING OPTIONAL
 - 2) PADS AND VIAS ARE CHASSIS GROUND, 40 PLACES

DO NOT SCALE DRAWING.

| | | | |
|--------------------------------------|-------------|---|------|
| EXPERIMENTAL NO: | | DIVISION ASSIGNED: dataMate Division | |
| TOLERANCE UNLESS OTHERWISE SPECIFIED | | DRAWN BY: DATE | |
| METRIC INCHES | | A. PIRILLIS 04/18/08 | |
| ± DEC. XX ± .010 | | CHECKED BY: DATE | |
| ± ANGLES ± .005 | | B. SKEPNEK 04/18/08 | |
| TOOLING DWG □ | | ENGR. APPROVAL: DATE | |
| PART DWG □ | | J. NOWAK 04/18/08 | |
| BREAK SHARP EDGES REMOVE ALL BURRS | | APPROVED BY: DATE | |
| | | A. CHIAPPETTA 04/18/08 | |
| | | PART NO. CLASSIFICATION: | |
| | | TITLE SFP+ EMI CAGE (IMPROVED) 2 PDRT MODULE WITH GASKET | |
| SIZE C | CODE IDENT. | DWG. NUMBER DM7050-2-D-L-X | Rev. |
| SCALE: | | SHI.2 OF 2 | |



THE INFORMATION DISCLOSED IN THIS DOCUMENT IS PROPRIETARY TO METHODE ELECTRONICS, INC. AND MAY NOT BE USED FOR MANUFACTURE OR ANY OTHER PURPOSE WITHOUT THE WRITTEN CONSENT OF METHODE. DRILLS SUBJECT TO CHANGE AS THEY MAY VARY WITH RESPECT TO PRODUCT VARIATIONS.