

RF AMPLIFIER

MODEL *TM9092*

Available as: TM9092, 4 Pin .500" TO-8LP (Low Profile)
 TN9092, 4 Pin .450" Sq. Surface Mount (SM3)
 BX9092, SMA Connectorized Housing (H1)
 BXP9092, SMA Connectorized Housing (HPak)

Features

- Wide Bandwidth 30-2200 MHz
- Low Noise Figure: 1.5 dB
- Cross to the Cougar AC2092, our Model TM9092
- Cross to the Cougar ACP2092, our Model BXP9092
- Environmental Screening Available

Specifications

CHARACTERISTIC	TYPICAL Ta= 25 °C	MIN/MAX Ta = -55 °C to +85 °C
Frequency (MHz)	30 -2200 MHz	30 -2000 MHz
Gain	18.0 dB	16.0 dB Min.
Gain Flatness	+/- 0.4 dB	+/- 0.7 Max.
Noise Figure (300-2000 MHz)	<1.5 dB	2.0 dB Max.
VSWR In	1.50:1	2.0:1 Max.
VSWR Out	1.50:1	2.0:1 Max.
Power @ 1 dB Comp.	+21.5 dBm	+20.0 dBm Min.
Reverse Isolation	23 dB	—
Power Vdc	+5	+5
mA	100	108 Max.

Typical Intermodulation Performance at 25 °C*

Second Order Harmonic Intercept Point..... +56 dBm (Typ.)
 Second Order Two Tone Intercept Point.....+50 dBm (Typ.)
 Third Order Two Tone Intercept Point.....+38 dBm (Typ.)

*Typical @ 25C measured at 500 MHz

Absolute Maximum (No Damage) Ratings

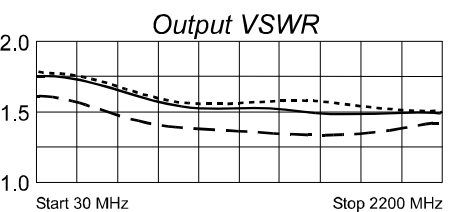
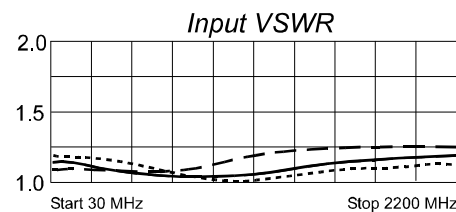
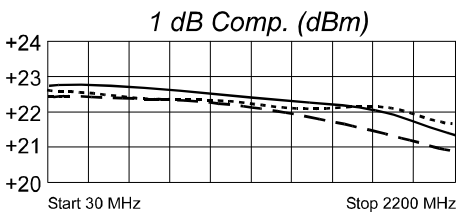
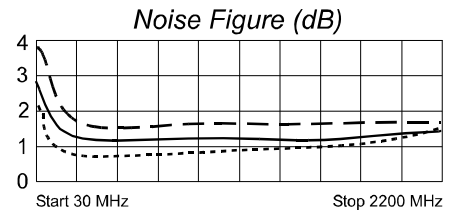
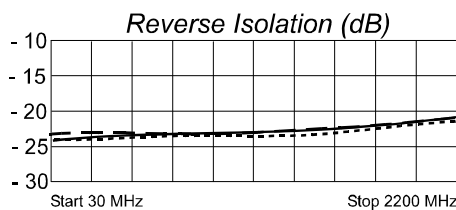
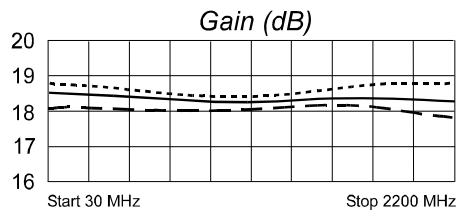
Ambient Operating Temperature -55°C to +100 °C
 Storage Temperature -62°C to +125 °C
 Case Temperature +125 °C
 DC Voltage +12 Volts
 Continuous RF Input Power +21 dBm
 Short Term RF Input Power +24 dBm (1 Minute Max.)
 Maximum Peak Power +27 dBm (3 µsec Max.)

Note: Measured in a 50 ohm system at +5 volts DC.

Note: Care should always be taken to effectively ground the case of each unit.

Revision 5/14/2012

Typical Performance Data



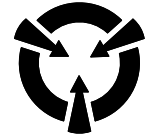
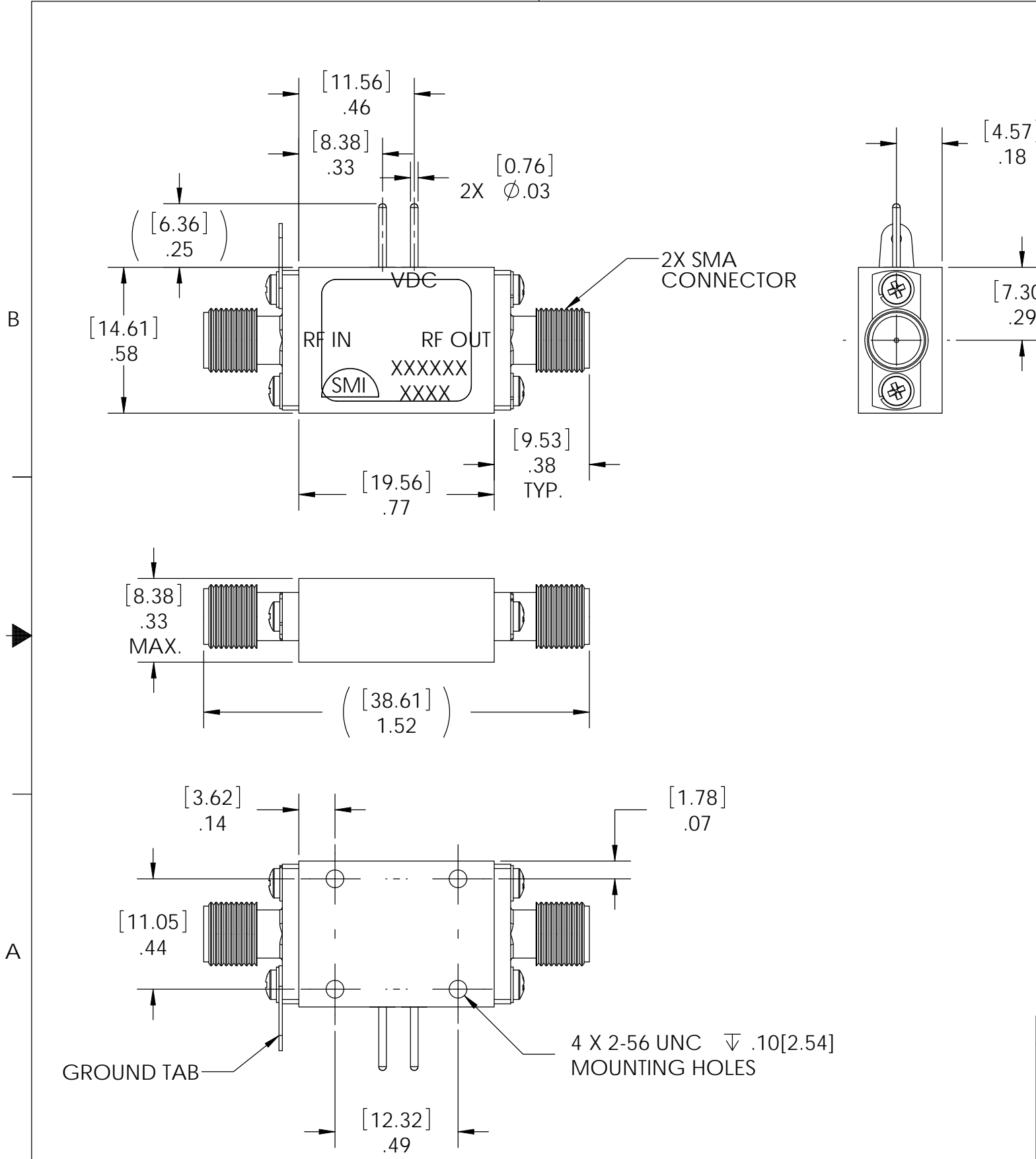
Legend ——— +25 °C - - - - +85 °C ······ -55 °C



Spectrum Microwave · 2144 Franklin Drive N.E. · Palm Bay, Florida 32905 · PH (888) 553-7531 · Fax (888) 553-7532

www.SpectrumMicrowave.com Spectrum Microwave · 2707 Black Lake Place · Philadelphia, Pennsylvania 19154 · PH (215) 464-4000 · Fax (215) 464-4001

REVISIONS				
ECN	REV.	DESCRIPTION	CHNG/DATE	APPVD/DATE
XXX	P1	PRELIMINARY RELEASE	2012/05/14	



CAUTION

THIS ASSEMBLY CONTAINS PARTS SENSITIVE TO DAMAGE BY ELECTROSTATIC DISCHARGE (ESD). USE ESD PRECAUTIONARY PROCEDURES WHEN TOUCHING, REMOVING OR INSERTING

SEE SEPARATE PARTS LIST IN ELECTRONIC STORAGE

UNLESS OTHERWISE SPECIFIED		3rd ANGLE PROJECTION		SPECTRUM MICROWAVE, INC 2707 Black Lake Place Philadelphia, PA 19154-1008 (USA)			
* INTERPRET DRAWING IAW ASME Y14.100-2004 * DIMENSIONING AND TOLERANCING IAW ASME Y14.5-1994 * PARENTHEICAL INFORMATION FOR REFERENCE ONLY * DIMENSIONAL LIMITS APPLY BEFORE PROCESSES * DIMENSIONS ARE IN INCHES * TOLERANCES ARE: ANGLES ±1.0° * SURFACE FINISH * REMOVE ALL BURRS AND SHARP EDGES .010 RAD MAX. * CONCENTRICITY MACHINED DIA: .002 FIM * MACHINED TOOL MISMATCH: .002 MAX.		ANSI					TITLE
63 2 PLACE DECIMAL ±.02 3 PLACE DECIMAL ±.005		DRAWN WAR	DATE 2012/05/14	OUTLINE, HPAK			
DO NOT SCALE DRAWING		CHECKED					ENGRG H PHAM
		MFG		SIZE B	CAGE CODE 60979	DWG NO. 088-00304	REV P1
		QA		SCALE: 1.5:1		SHEET 1 OF 1	

SPECTRUM MICROWAVE PROPRIETARY INFORMATION
 THIS DOCUMENT IS THE SOLE PROPERTY OF SPECTRUM MICROWAVE, INC. THE RELEASE OF DATA CONTAINED IN THIS DOCUMENT AND THE REPRODUCTION OF THIS DOCUMENT, IN WHOLE OR IN PART, WITHOUT THE WRITTEN PERMISSION OF SPECTRUM MICROWAVE, INC ARE PROHIBITED.