



FCS-3101 Version: 1

2-Megapixel Day/Night PoE Mini Dome Network Camera - IR LEDs

The LevelOne FCS-3101 is a palm-size and stylish design quality yet cost-effective surveillance solution for the home and office. It is designed for easy and flexible installation. Equipped with a 2-Megapixel sensor and built-in IR cut filter/IR illuminator LEDs, the camera provides high resolution quality and sharp sensitivity – ideal for security applications both day and night.

The FCS-3101 is equipped with many advanced features such as Level1DNS™ Service, alarm and sensor, a micro SD/SDHC card slot and USB interface for local storage, built-in microphone communications. Moreover, Support unique features for auto tracking function of moving objects, the system can send an E-mail alert or send captured images via FTP upload to a designated storage server. The FCS-3101 is indisputably the top choice for reliable and high performance surveillance.



- 1. Housing Latch
- 2. Power Socket
- 3. PoE LAN Port
- 4. Lens

- 5. IR LED
- 6. Internal Microphone
- 7. Micro SD/SDHC Card slot
- 8. Reset Button

Key Features

- 2-Megapixel (1920 x 1080) high-definition resolution
- Compression: H.264/MPEG-4/MJPEG
- Removable IR-cut filter for day and night surveillance
- Supports 2 video streams simultaneously
- Built-in infrared LEDs for night viewing up to 10m



- Built-in Micro SD/SDHC card slot for local storage
- Built-in microphone for audio monitoring
- Dual power support: 12VDC/PoE (IEEE 802.3af)
- Free 64-channel monitoring software included (supports iCamSecure App)

Specifications

System Specifications

Image Sensor:

2-Megapixel 1/2.7" Progressive Scan CMOS

Connectors and Cabling:

1 x RJ-45 10/100 Mbps PoE port

1 x DC Power Jack

1 x Built-in microphone

Modularity:

1 x MicroSD/SDHC card slot

Button:

Reset Button

Indicator:

Power, Link

Lens:

Board lens, fixed-focal, f=4.0 mm, F2.0

IR Cut Filter:

Removable infrared-cut filter for day & night function

IR LED:

19 IR LEDs for illumination up to 10m

Shutter Time:

Indoor : 1/30 ~ 1/120 sec

Outdoor : 1/30 ~ 1/1,000,000 sec

Angle of View:

62°

Video Compression:

H.264 / MPEG4 / MJPEG

Resolution:

1080p (1920x1080) / SXGA (1280x1024) / WXGA (1280x800) / VGA (640x480) / QVGA (320x240) / QCIF (176x144)

Video Format:

AVI

Audio Compression:

AMR / AAC

Power:

Power Consumption: 6W

Power Input: DC12V 1.5A / AC24V / 802.3af PoE

Standards & Protocols:

IEEE 802.3 10-BASE-T, Ethernet

IEEE 802.3u 100-BASE-TX, Fast Ethernet

TCP/IP, HTTP, SMTP, FTP, DDNS, UPnP, Telnet, NTP, PPPoE, DNS, DHCP, RTSP, Samba

Features

General:

Backup: MicroSD/SDHC card slot for local storage

IPv6: IPv4/IPv6 network operation DNS: Easy Internet monitoring via configuration free Level1DNS™ service

Security:

Alarm and Notification: Alarm: Motion Detection; Notification: FTP, SMTP, Samba

Access Control: Multi-level user access with password protection

IP address filtering

HTTPS encrypted data transmission

Video:

Image Setting: - Adjustable image size, quality and bit rate

- Configurable brightness, sharpness, contrast, saturation, white balance and exposure

- AGC/AWB/AEC

- Wide Dynamic Range (WDR)

- Flip & Mirror

- Time Stamp

Streaming: Up to 2 video streams

Audio:

Streaming: 1-way audio

Input/Output: Built-in microphone

Performance

Number of Clients:

16

Data Transfer Rate:

10/100Mbps

Frame Rate:

Up to 30 fps at 1920x1080

Minimum illumination:

Color: 1.0 lux at F2.0

B/W: 1.0 lux at F2.0

Environment

Temperature (°C):

Operating: 0°C ~ 40°C

Humidity (Non-condensing):

Operating: 10% ~ 80%

Physical Specifications

Dimensions (W x D x H mm):

63 x 63 x 92 mm

Weight (g):

380g

Others

Approval and Compliance:

CE, FCC

Deployment:

Desktop/Ceiling Mount

Operation Systems:

Microsoft Windows 7/Vista/XP



Viewing System Requirements:

Browser: Internet Explorer 6.x or above, Firefox, Chrome, Safari

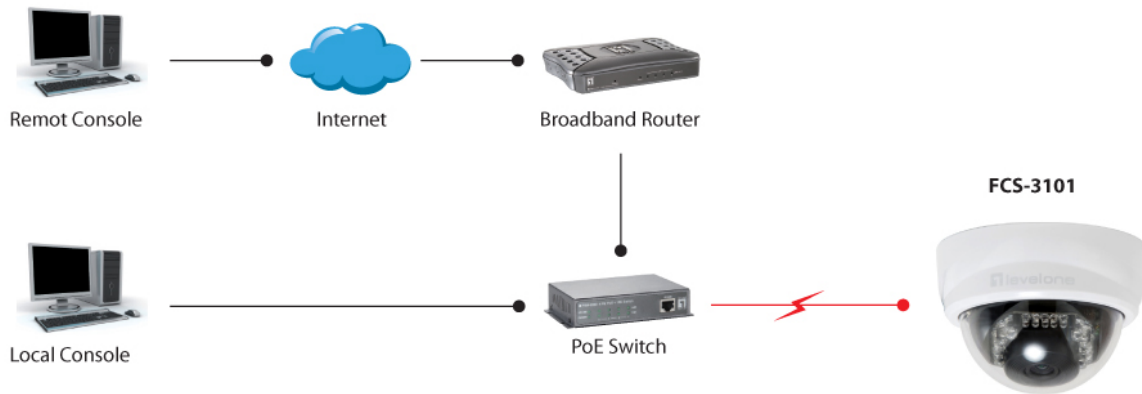
Cell phone: 3GPP player

Real Player: 10.5 or above

Quick Time 6.5 or above

Diagram

— Ethernet Cable (Data)
— PoE (Power + Data)



Order Information

FCS-3101

Package Contents

Power Adapter

Mounting Kit

Screw Kit

Quick Installation Guide

Resource CD (User Manual, Utility, 64-CH Monitoring Software)

No liability or responsibility for any errors or omissions in the content.
Specifications are subject to change without notice.

All mentioned brand names are registered trademarks and property of their owners.
Copyright © Digital Data Communications GmbH, Germany. All Rights Reserved.